

STREE SWACCHA AUTOMATIC SANITARY PADS COLLECTOR AND DISPENSER

Project Reference No.: 47S_BE_3757

College : Proudhadevaraya Institute of Technology, Hospete, Ballari
Branch : Department of Computer Science and Engineering
Guide(s) : Prof. Naveen Kumar H.
Student(S) : Ms. Seema R.
 Ms. B. Shanthala
 Ms. Nabila Sharin
 Ms. Shifa Tabassum

Introduction

Sanitary napkin pads have a psychological impact on the advancement of women's emancipation and are crucial for sustaining women's menstrual health. The price of napkin pads has always been greater and out of reach for the majority of customers. This has caused people to wear inexpensive, unsanitary clothing, which has contributed to health issues.

For Indian women's menstrual health, access to sanitary napkin pads is absolutely necessary. Many women are being forced to use homemade cloth pads, which are filthy and painful due to cultural taboos surrounding menstrual health as well as the cost of the pad.

Modules

Automatic Sanitary Collector

Even while the government and NGOs are working to manufacture inexpensive pads, they have had little success in reaching the rural people.

Although the price may be within the reach of the urban populace, timely supply is a concern. When people are in transit, the issue worsens. Providing pad vending machines in public spaces like hospitals, schools, and colleges has been recommended as an alternative. A small unit cell is used in the design to provide stability for varying incidence angles. It makes use of a thin substrate that is very flexible and easy to apply to curved surfaces. People have occasionally been dissatisfied when the vending machines ran out of supply. In the long run, consistent unavailability would lead to individuals being dismembered. the equipment

Sub Modules:

1. Scanner

Demonstrating in exceptional operating skills in efficiently operating a scanner to verify the identity of individuals using ration cards or Aadhaar cards of registered users.

2. Language:

India is a country with different type of people speaking different languages. so the machine being multilingual is very helpful as everybody can use in their own preferred language.

3. Authentication:

Successfully avoids scams by implementing a face recognition and thumb impressions system for registered women.

4. Collecting sanitary pads:

After providing the details of the users, the sanitary pads are collected by the women in collect here section.

5. Collecting medicine:

The options are provided by the machine and the tablets are directly provided by pressing that option to collect different tablets for particular problems during menstruation. (ex: machine stomachache, headache, body pains etc)

Automatic Sanitary Dispenser:

As an alternative, we propose installing devices that would dispense pads and updating the stock availability to a central authority will enable timely replenishment, with no supply going low. The variables influencing the global market for sanitary napkins are (a) growing disposable sanitary products' growing popularity, the number of working women's population, and purchasing power, as well as (c) the awareness that different non-profit organisations have raised.

We provide two separate boxes in dispensing pads as there will be wet and dry sanitary pads. Wet: the pads which are wet is dispensed in this box with the help of a chemical.

Dry: the pads which are dry is dispensed in this box with the help of a chemical.

Application:

- Developed and created the Stree Swaccha application to effectively spread information about women's menstrual safety, health, and hygiene.
- Implemented a user-friendly registration system within the application, allowing users to easily sign up and create accounts.
- Designed and integrated a seamless ordering system, enabling users to order sanitary products and tablets directly to their homes at no cost.
- Utilized impactful visuals and content within the application to educate and raise awareness about the importance of menstrual health.
- Ensured a smooth and efficient user experience by conducting thorough testing and debugging of the application.
- Collaborated with a team of developers and designers to bring the Stree Swaccha application to life, showcasing effective teamwork and communication skills.

Sub modules:**1. Registration:**

the users should register their name and all authenticating details in the app for further uses.

2. Ordering:

Sometimes women cannot get the sanitary pads physically hence they can order the pads using the app with only the delivery charge.

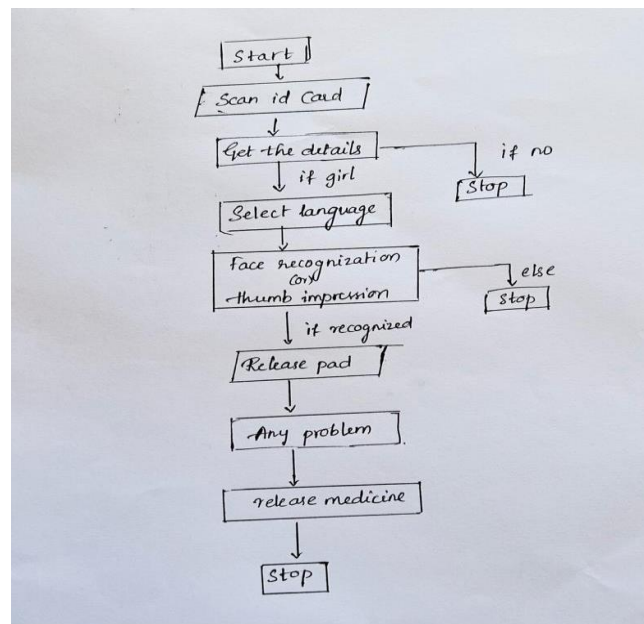
3. Donation:

All public can access the application which, whenever they want to donate the money for the needs being updated.

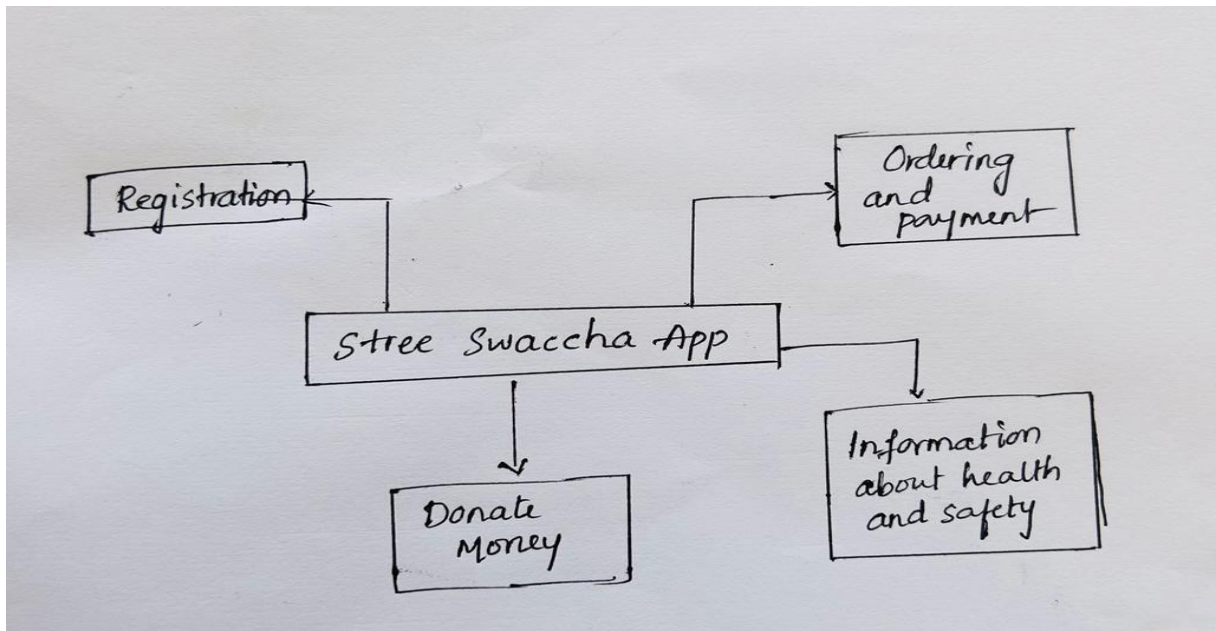
4. Knowledge:

The app even provides the knowledge about menstrual health and safety in ste

Flow Charts



Flow Chart of Automatic Sanitary Pads Collector



Flowchart of Stree Swaccha Applicatio

Flowchart of Stree Swaccha Application

Compartment	VENDING MACHINE RESULTS TABULATED			
	<i>Pads available</i>	<i>Action Taken</i>	<i>Dispensing Time(sec) /pad</i>	<i>Remarks</i>
1	10	ID is scanned	3	Successfully dispensed
2	5	ID is scanned	3	Successfully dispensed
3	0	XIL	NIL	Message sent to owner for refill

TABLE II. INCINERATOR DESIGN					
Capacity of Incinerator	INCINERATOR MACHINE SPECIFICATIONS			Heater Power Output	Sensor Used
	<i>Pads used</i>	<i>Weight of Dry Pad</i>	<i>Operating Temperature</i>		
1-20 pads	Biodegradable	7-10 grams Wet Weight is 90-93% More than the pad	28 to 502° C	1kW	LM 35 temperature sensor(-50 to +600 ° C)

Diagram of Sanitary Dispenser

EXPECTED OUTCOMES

1. User will be able to collect the pads free of cost.
2. Healthy environment maintained due to dispenser as the pads will be dispensed.
3. The donated money will help during any crisis.
4. The app will be educated about woman health and safety which is mandatory to everyone in this world.