



# **Davanagere District Technical Report**

**December 2025- March 2026**

**Submitted By**

**District Natural Resource Data  
Management System Centre (NRDMS),**

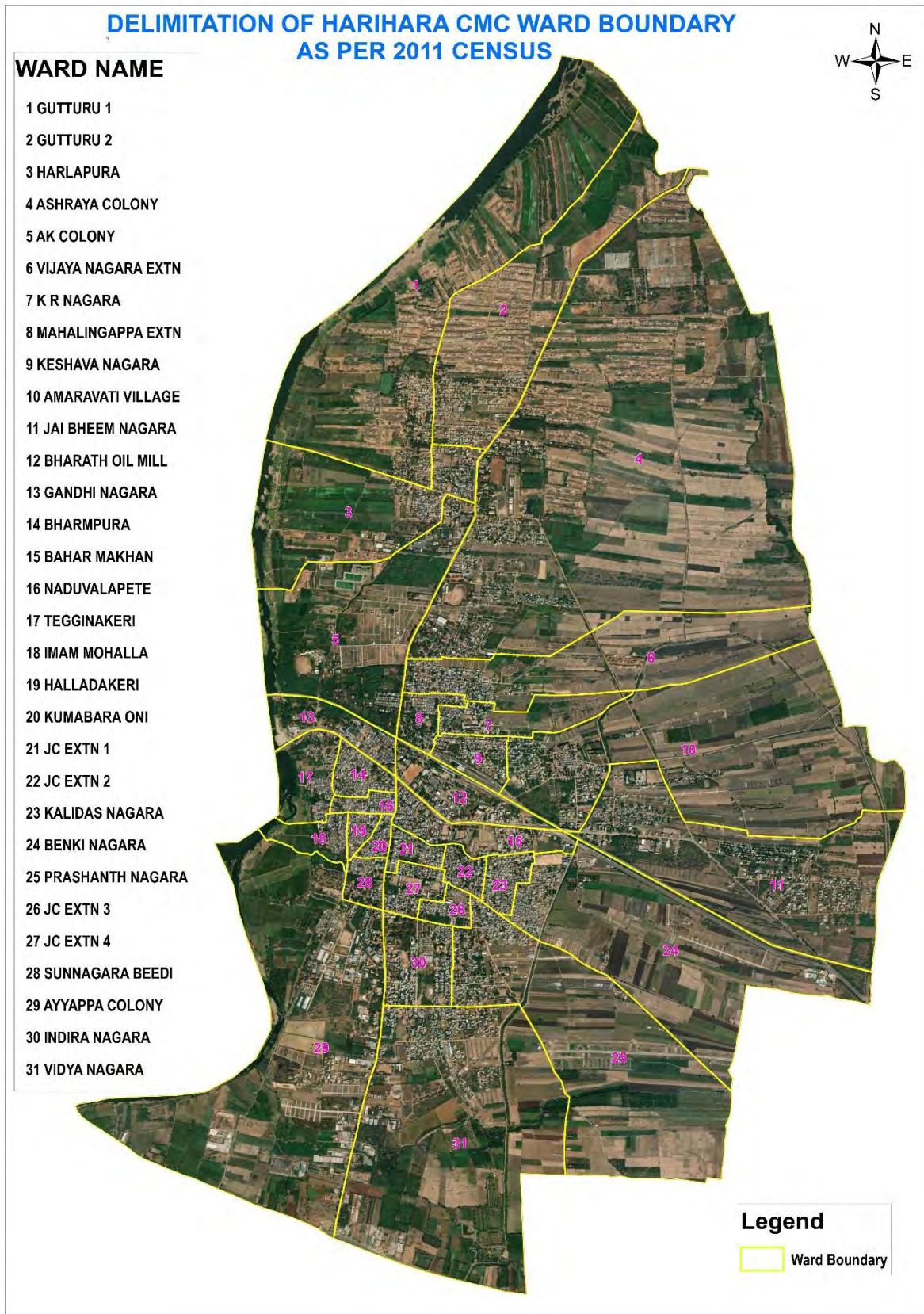
**Zilla Panchayat, Davanagere.**

<b>SL No</b>	<b>Headings</b>	<b>Page Num</b>
<b>1</b>	<b>Major Activities Carried Out during the period of December 2025-March 2026</b>	<b>1-15</b>
<b>2</b>	<b>Training Programmes Attended</b>	<b>15</b>
<b>3</b>	<b>Training Imparted to Line Department</b>	<b>15</b>
<b>4</b>	<b>Science Outreach Activities</b>	<b>16</b>
<b>5</b>	<b>Conclusion</b>	<b>16</b>
<b>6</b>	<b>Annexures</b>	<b>16-17</b>

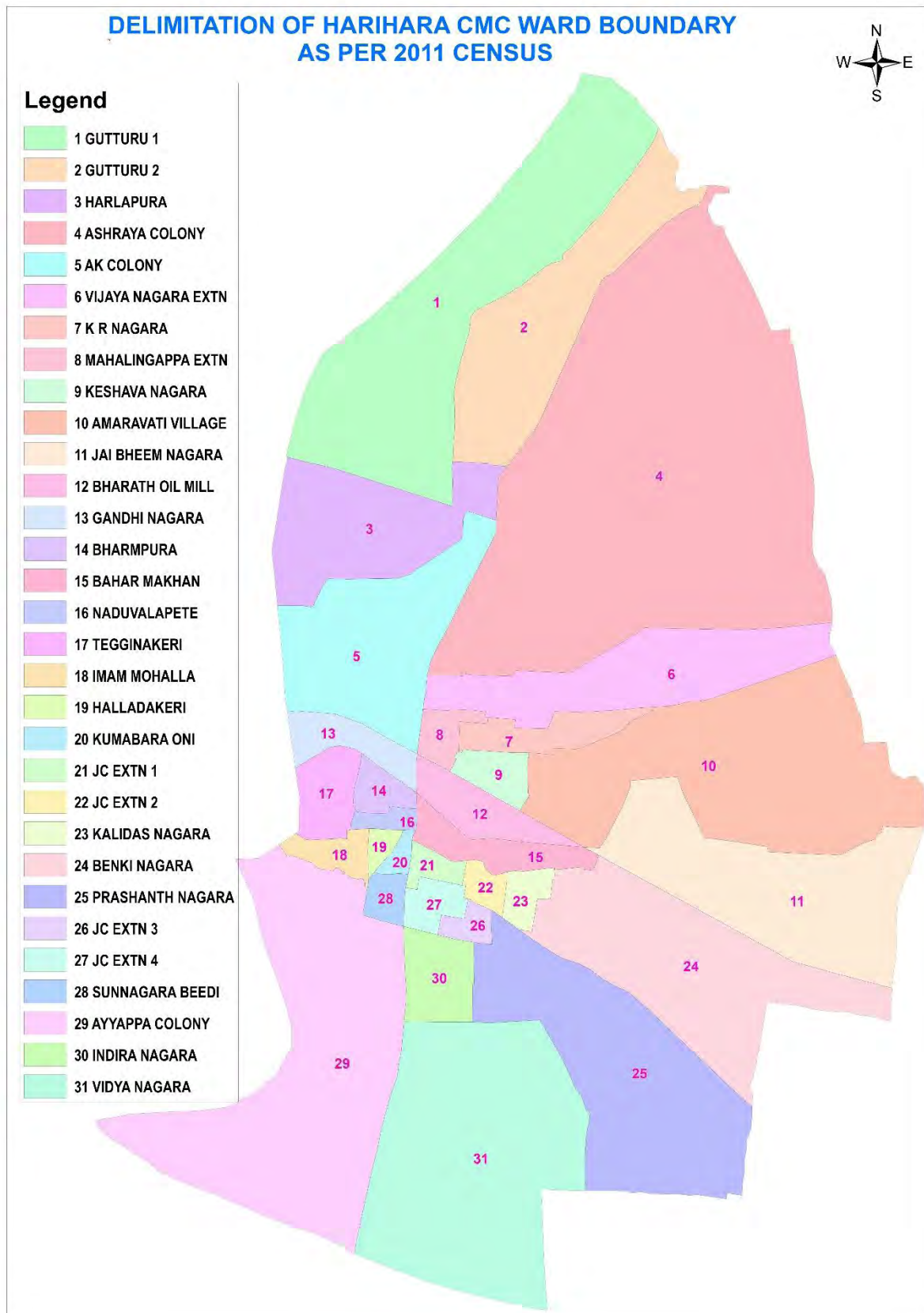
## 1. Major Activities Carried Out during the period of December 2025 – March 2026

### Activity: 1

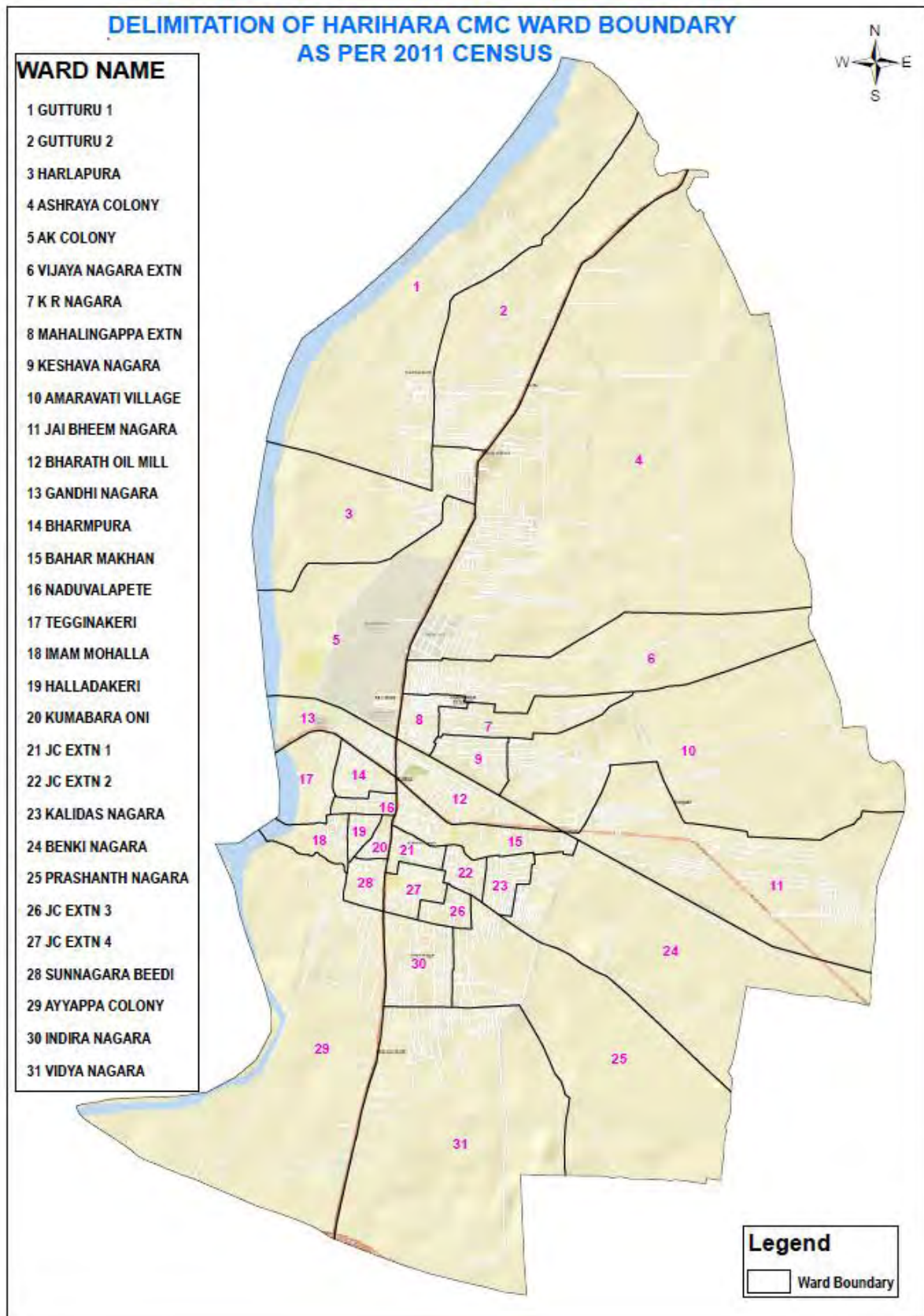
<b>Title of work</b>	Delimitation of Harihara City Municipal Corporation
<b>Department Name</b>	Department of Municipal Administration, Harihara CMC
<b>Objectives</b>	Delimitation of Harihara City Municipal Corporation Boundary based on area and Population.
<b>Data Used</b>	Existing CMC Boundary, Village Boundary, City Roads, Major Land Marks, Census data provided by department.
<b>Data Process</b>	Existing CMC boundary data and Village Boundary data is added and ward-wise boundary creation by using Major Land Marks the new Boundary is generated and provided to department.
<b>Type of Data Provided</b>	PDF and JPEG Maps <b>(Map-1 to 3)</b>



**Map 1: Harihara City Municipal Corporation Delimitation Image Map.**



**Map 2: Harihara City Municipal Corporation Delimitation Ward Map.**



**Map 3: Harihara City Municipal Corporation Delimitation Street View Map.**

**Activity -2**

<b>Title of work</b>	Hodigere Grama Panchayath Satellite Image Map, Channagiri Taluk, Davanagere Distirct
<b>Department Name</b>	Grama Panchayath, Hodigere, Channagiri Taluk, Davanagere.
<b>Objectives</b>	Village Information of Hodigere Village for Planning activity within the Grama Tana.
<b>Data Used</b>	Village Boundary, Survey Number Boundary, Satellite Image, Roads and Village Location.
<b>Data Process</b>	Using Satellite Image Map is generated to plan the works within the grama tana. Using Google earth Map and GIS Application and prepare the Maps.
<b>Type of Data Provided</b>	PDF and JPEG Maps <b>(Map-4)</b>



**Map 4: Hodigere Village, Channagiri Taluk, Davanagere Distirct**

**Activity -3**

<b>Title of work</b>	Delimitation of Harihara City Municipal Corporation
<b>Department Name</b>	Department of Municipal Administration, Harihara CMC
<b>Objectives</b>	Delimitation of Harihara City Municipal Corporation Boundary based on area and Population.
<b>Data Used</b>	Existing CMC Boundary, Village Boundary, City Roads, Major Land Marks, Census data provided by department.
<b>Data Process</b>	Existing CMC boundary data and Village Boundary data is added and ward-wise boundary creation by using Major Land Marks the 31 individual ward Boundary is generated and provided to department.
<b>Type of Data Provided</b>	PDF and JPEG Map ( <b>Map-5 to 7</b> )



**Map 5: Harihara City Municipal Corporation Delimitation Ward 1 Guttururu 1 Map**



**Map 6 : Harihara City Municipal Corporation Delimitation Ward 2 Guttur 2 Map**

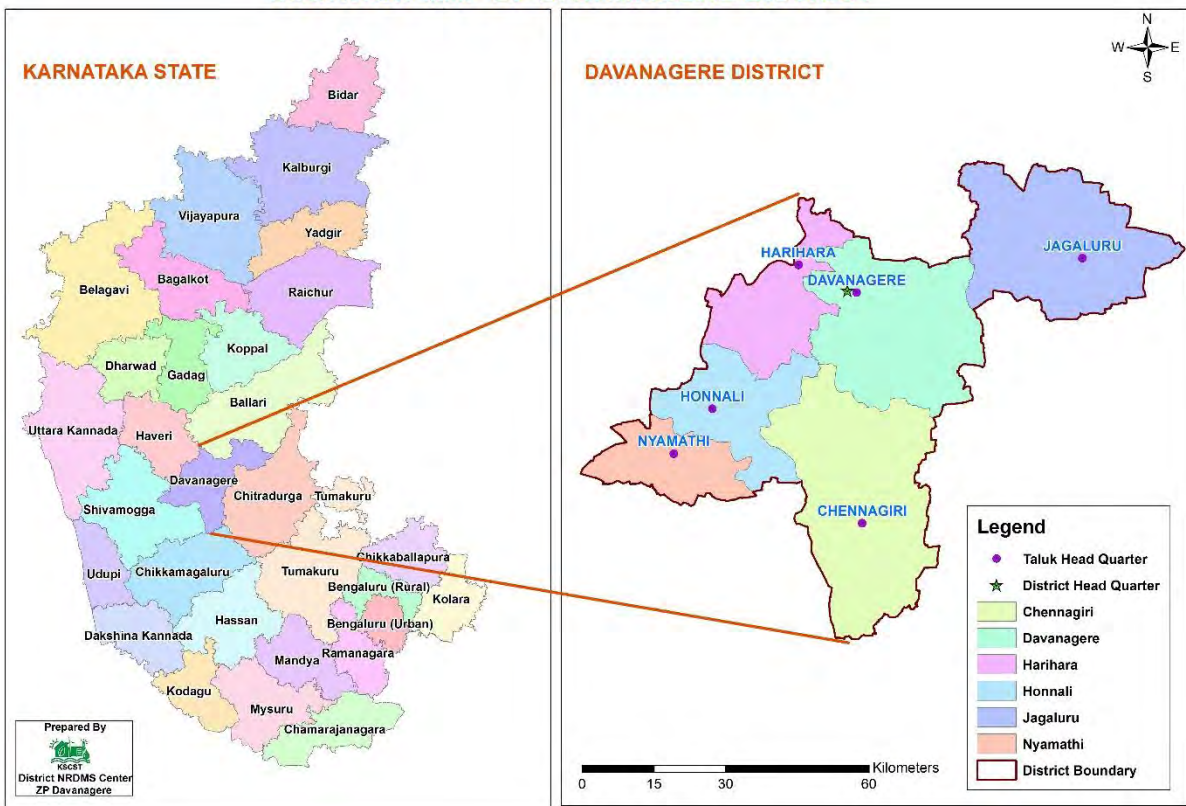


**Map 7: Harihara City Municipal Corporation Delimitation Ward 3 Harlapura Map**

**Activity: 4**

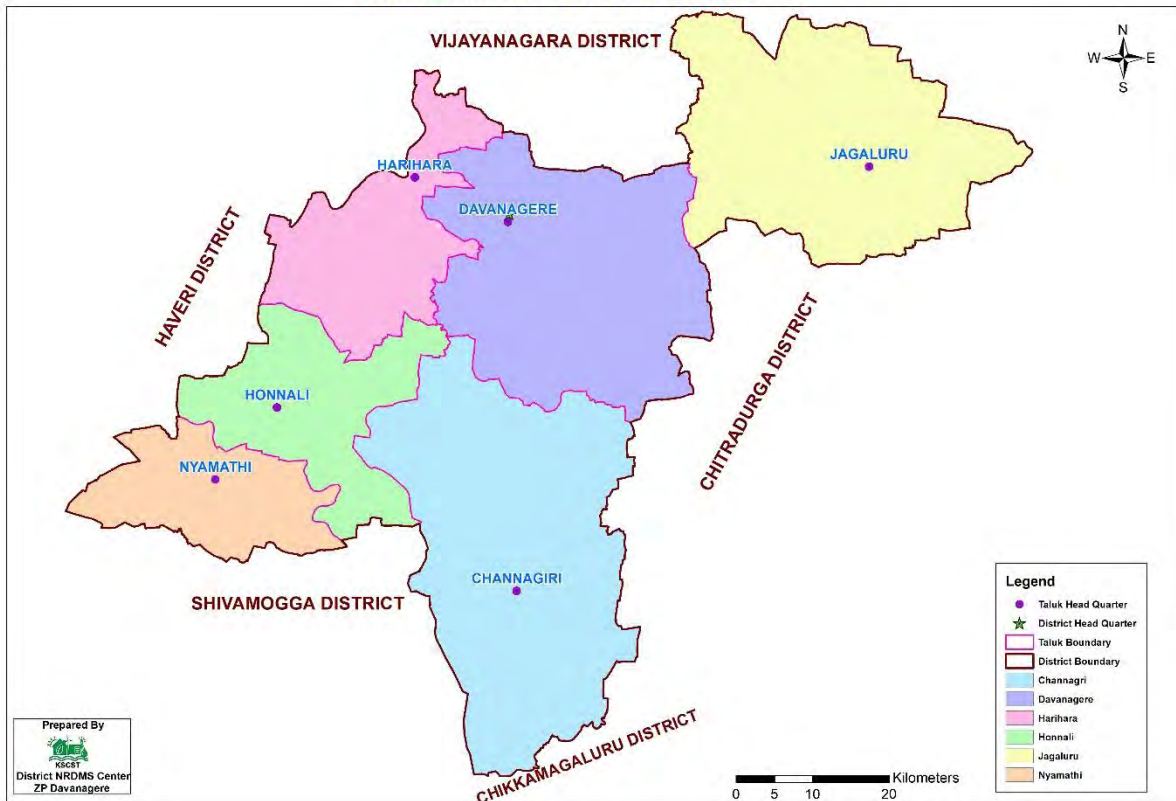
<b>Title of work</b>	District Maps prepared given to National Informatics Center.
<b>Department Name</b>	Department of IT, BT and S&T, Davanagere
<b>Objectives</b>	Davanagere District resource and other maps Preparation.
<b>Data Used</b>	District Boundary, Taluk Boundary, Transportation, LULC, Soil, Lithology, other information by department.
<b>Data Process</b>	District Maps prepared Using GIS application map was generated and provided to department.
<b>Type of Data Provided</b>	PDF and JPEG Maps ( <b>Map-8 &amp; 12</b> )

**LOCATION MAP OF DAVANAGERE DISTRICT**



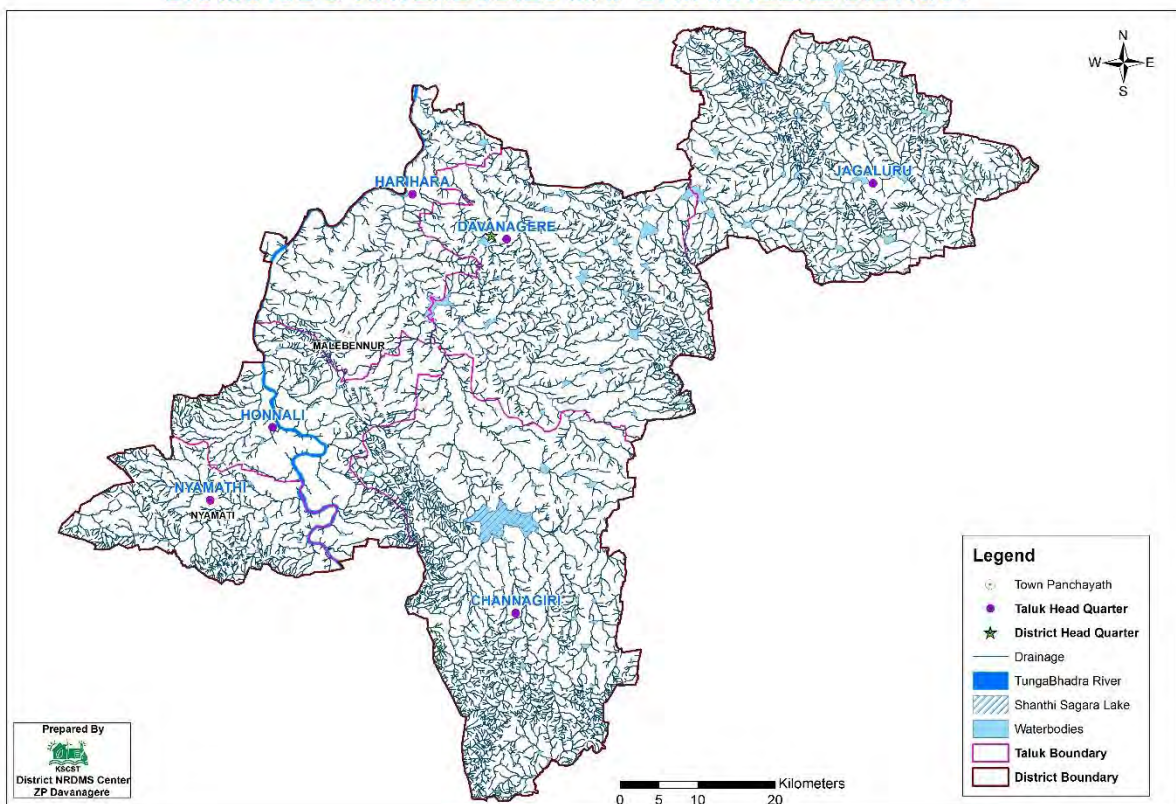
**Map 8 : Location Map of Davanagere District.**

### DAVANAGERE DISTRICT MAP



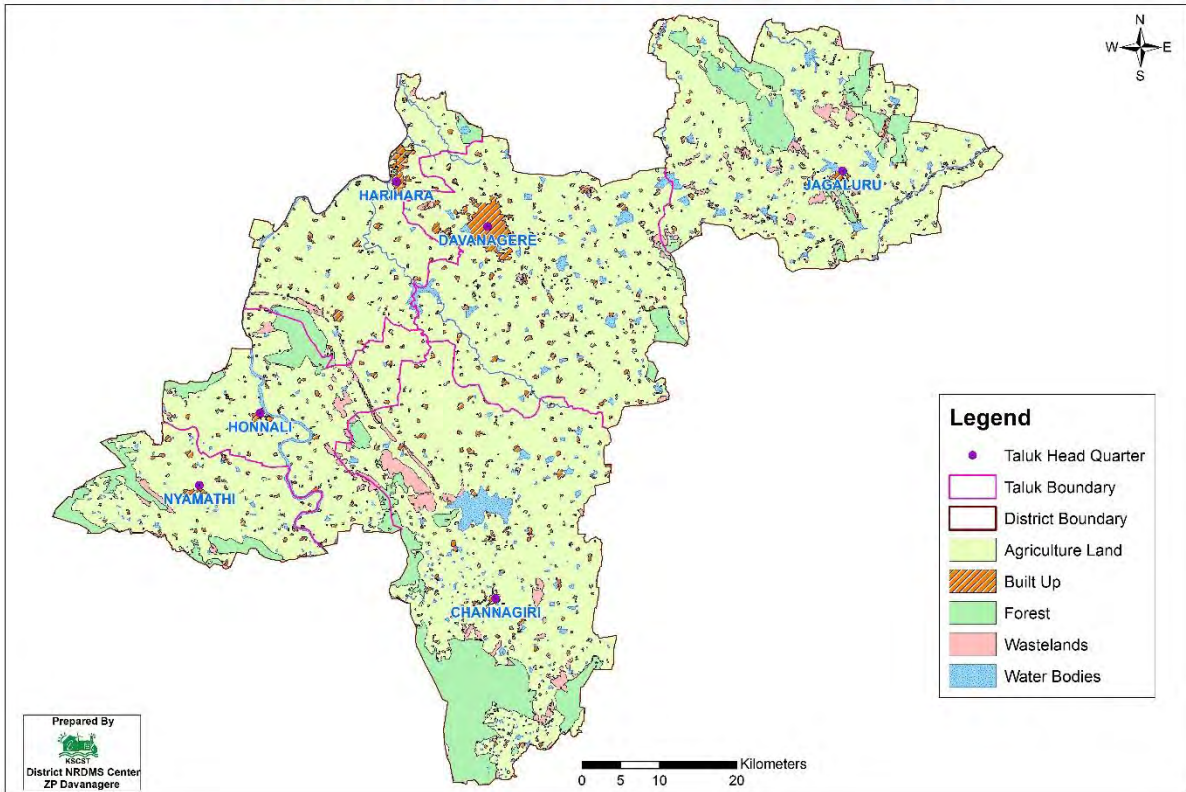
Map 9 : Administration Map Davanagere District.

### DRAINAGE & WATERBODIES MAP DAVANAGERE DISTRICT



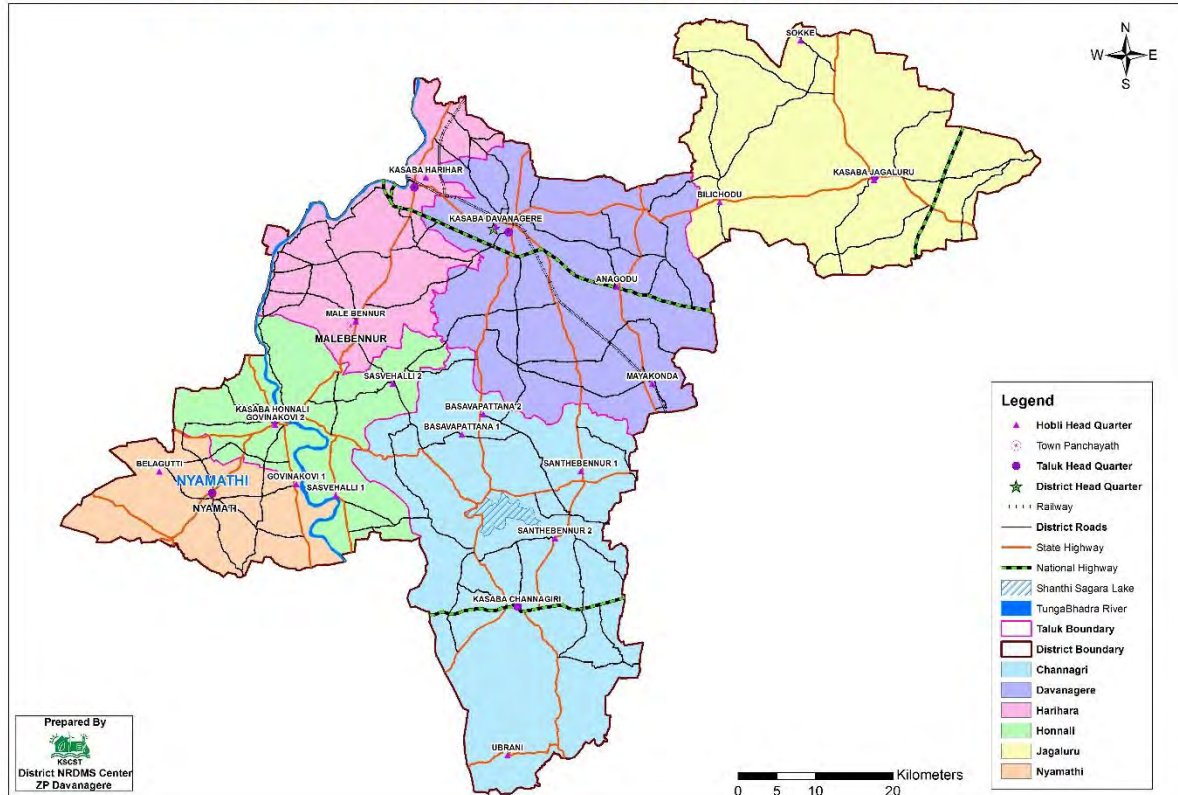
Map 10 : Drainage Map Davanagere District.

### LAND USE & LAND COVER MAP DAVANAGERE DISTRICT



Map 11 : Land Use Land Cover Map Davanagere District.

### TRANSPORTATION NETWORK MAP DAVANAGERE DISTRICT

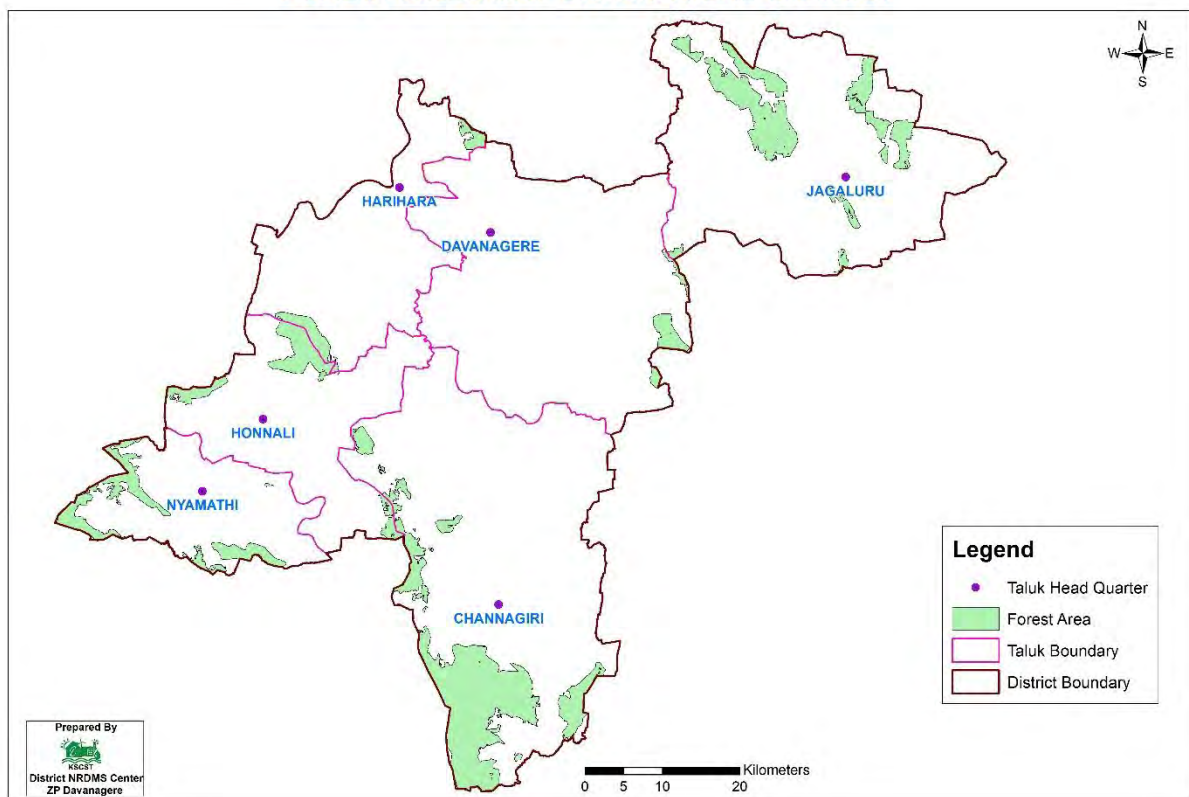


Map 12 : Transportation network Map Davanagere District.

**Activity: 5**

<b>Title of work</b>	Davanagere district Forest Area Map
<b>Department Name</b>	Department of Forest, Davanagere
<b>Objectives</b>	prepare the Reserved and Protected Forest area Map .
<b>Data Used</b>	District Boundary, Taluk Boundary, Forest Boundary, Taluk Locations, Department Details
<b>Data Process</b>	Forest area Map Prepared by using GIS and send to DCF
<b>Type of Data Provided</b>	PDF and JPEG Maps ( <b>Map-14</b> )

**FOREST AREA MAP DAVANAGERE DISTRICT**



**Map 13 : Forest area Map Davanagere District.**

**Activity: 6**

<b>Title of work</b>	Chitradurga District Taluk Maps Prepared
<b>Department Name</b>	DC office and Taluk Office, Chitradurg
<b>Objectives</b>	prepare the Taluk Administration Map.
<b>Data Used</b>	District Boundary, Taluk Boundary, Village Boundary, Taluk Locations, Department Details.
<b>Data Process</b>	All 6 taluk Map Prepared by using GIS and send to DC office and Taluk office for Census work.
<b>Type of Data Provided</b>	PDF and JPEG Maps ( <b>Map-14</b> )



**Map 14 : Challakere Taluk administration Map.**



Map 15 : Chitradurga Taluk administration Map.



**Map 16 : Holalakere Taluk administration Map.**

## **2. Training Programmes Attended**

1. District Human Development Index report 2025 and District Compressive and Sustainable Development Plan 2031 on 21-01-2026.
2. Attend Census India 2027 training programme on 08-03-2026

## **3. Training Imparted to Line Department**

No Training Imparted to line department on this period.

## 4. Science Outreach Activities

No Science Outreach Activities were conducted during this period.

## 5. Conclusion

### A) Summary of Activities Under Take.

During this period district NRDMS center, ZP Davanagere provided various Maps, data and report to Zilla Panchayat Office, Deputy Commissioner Office, Police Department and various line department, pertaining to implementation of various activities and assist district administration in disaster management.

### B) Commitment to Improve NRDMS Activities.

District NRDMS Centre ZP Davanagere is committed to provide quality and scientific assistance to department for implementation of developmental activities in district.

District NRDMS center is also committed to update the existing data base as up to date to enhance its performance and to assist the departments.

Centre is also committed to learn and update ourself to latest GEO SPATIAL technology and other software to improve our efficiency.

## 6. Annexures

### List of Maps:

**Map 1:** Harihara City Municipal Corporation Delimitation Image Map.

**Map 2:** Harihara City Municipal Corporation Delimitation Ward Map.

**Map 3:** Harihara City Municipal Corporation Delimitation Street View Map.

**Map 4:** Hodigere Village, Channagiri Taluk, Davanagere Distirct

**Map 5:** Harihara City Municipal Corporation Delimitation Ward 1 Gutturu 1 Map

**Map 6:** Harihara City Municipal Corporation Delimitation Ward 2 Gutturu 2 Map

**Map 7 :** Harihara City Municipal Corporation Delimitation Ward 3 Harlapura Map

**Map 8 :** Location Map of Davanagere District.

**Map 9 :** Administration Map Davanagere District.

**Map 10 :** Drainage Map Davanagere District.

**Map 11 :** Land Use Land Cover Map Davanagere District.

**Map 12 :** Transportation network Map Davanagere District.

**Map 13 :** Forest area Map Davanagere District.

**Map 14 :** Challakere Taluk administration Map.

**Map 15 :** Chitradurga Taluk administration Map.

**Map 16 :** Holalakere Taluk administration Map.