

NATURAL RESOURCE DATA MANAGEMENT SYSTEM (NRDMS)

**Bidar District Quadrimestral Technical Report
December-2025 to March-2026**



Submitted By

District NRDMS Centre

Zilla Panchayat, Bidar

Karnataka State Council for Science and Technology (KSCST)

Indian Institute of Science Campus,

Bengaluru- 560012

Table of Contents

SL No	Particulars	Page Number
1	NRDMS Centre Activities (December- 2025 to March-2026)	03-11
2	Training Programs Attended	12
3	Training Programs Imparted to Line Department	12
4	Science Outreach Activities	12
5	Conclusion	12
6	Annexures	13

1. Major Activities Carried Out during the period of December-2025 To March-2026:

Activity -1

Title of work	PMGSY Roads and Kalyan Patha Roads and KKRDB Mapping
Department Name	CEO Zilla Panchayat, Bidar
Objectives	Accurate Spatial Representation of roads, Transportation Planning and Development Support planning of new roads, widening, realignment, and infrastructure development based on spatial analysis.
Data Used	Road Start and end Point Latitude and Longitude, Village Boundary, Taluk Boundary
Data Process	Identifying of roads in Google earth Marking the Specific road Start place and end place in Google earth of specific year road types. Joining the two points in Google earth to show particular road existed in Ground
Type of Data Provided	Provided Pdf Map

Map 1: Showing PMGSY Proposed Road



Map 2: Showing Road wrk Maintennce Under KKRDB and 3054 Head

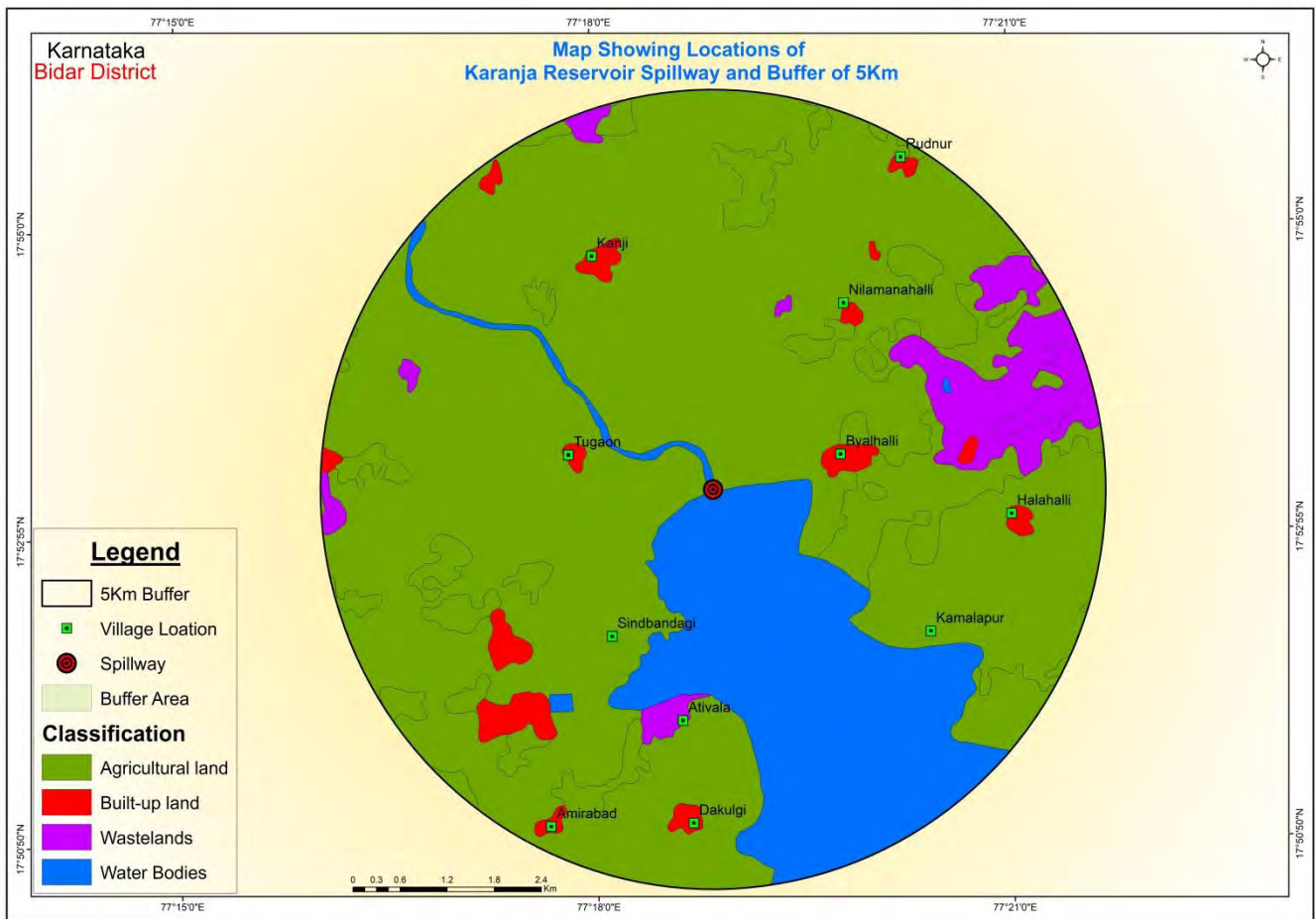


Activity -2

Title of work	TP/ZP Delimitation
Department Name	DC office Election Branch
Objectives	To clearly identify the jurisdiction of each Taluka Panchayat (TP) and Zilla Panchayat (ZP), avoiding overlap and to Facilitate smooth planning, implementation, and monitoring of Elections and to ensure fair representation of population and areas in local bodies, especially for elections and reservation of seats
Data Used	Village Boundary, Taluk Boundary, Water Body, Contour Data DEM Data, Forest Cover To support preparation of electoral rolls, conduct of elections, and resolution of jurisdictional disputes. Well-planned TP/ZP boundary delimitation contributes to transparent administration, improved service delivery
Type of Data Provided	Provided Pdf Map

Activity -3

Title of work	Karanja Reservoir LULC Mapping
Department Name	Major Irrigation
Objectives	LULC mapping helps to understand how land is used, track changes over time, and support sustainable land management It helps to identify different land categories such as forests, agriculture, water bodies, settlements, barren land and to analyses cropping patterns, irrigation areas and agricultural productivity.
Data Used	Latitude and Longitude of Reservoir Spillway, Village Boundary and Satellite image and DEM.
Methodology	Using a Digital elevation model (DEM) a Contour Map Generated using Arc Map Classification is Done Using Image and LULC Map is Generated with the help of Arc map tool Buffer Area is created for 5Km Radius from the Spillway of Dam the Marked Area is Clipped using Clip tool.



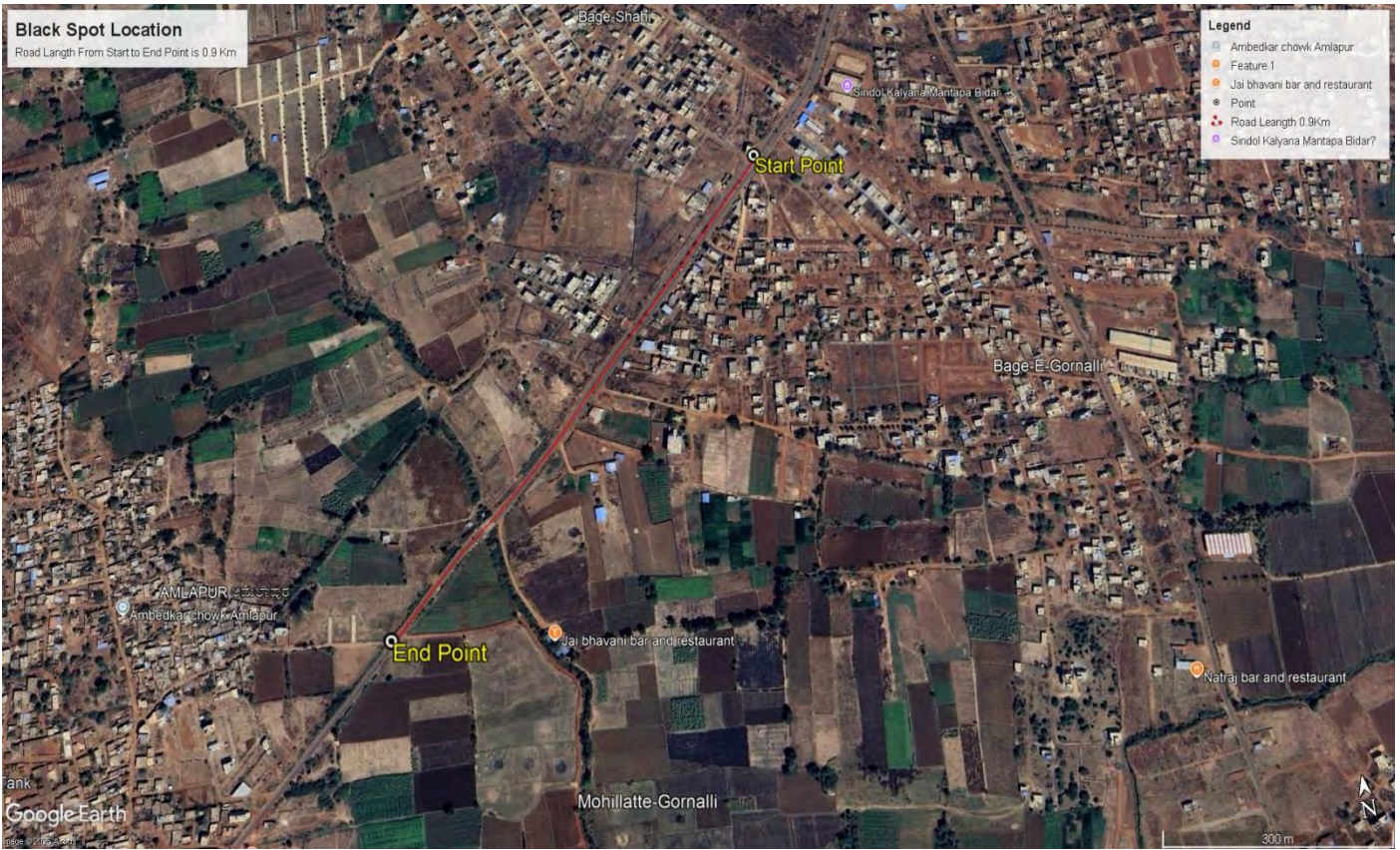
Map 5: Showing Karanja Reservoir Within 5Km LULC

Activity -4

Title of work	Black Spot Identification and Mapping
Department Name	Police Department
Objectives	It helps police Department for better planning of raids and investigations Identify regions with high levels of drug abuse or trafficking for targeted intervention and awareness programs. Helps the Department to deploy manpower, monitoring efficiently.
Data Used	Latitude and Longitude of Seized Locations, Habitation Location and Familiar Assets like Temple, Resort etc...
Methodology	Collected Latitude and Longitude of Drug Seized Places using an XY data Point data is created on Google Earth Connected two points using Road Stretch of two identical Spots and marked Buffer zone of 3Km from each point using Arc Map.

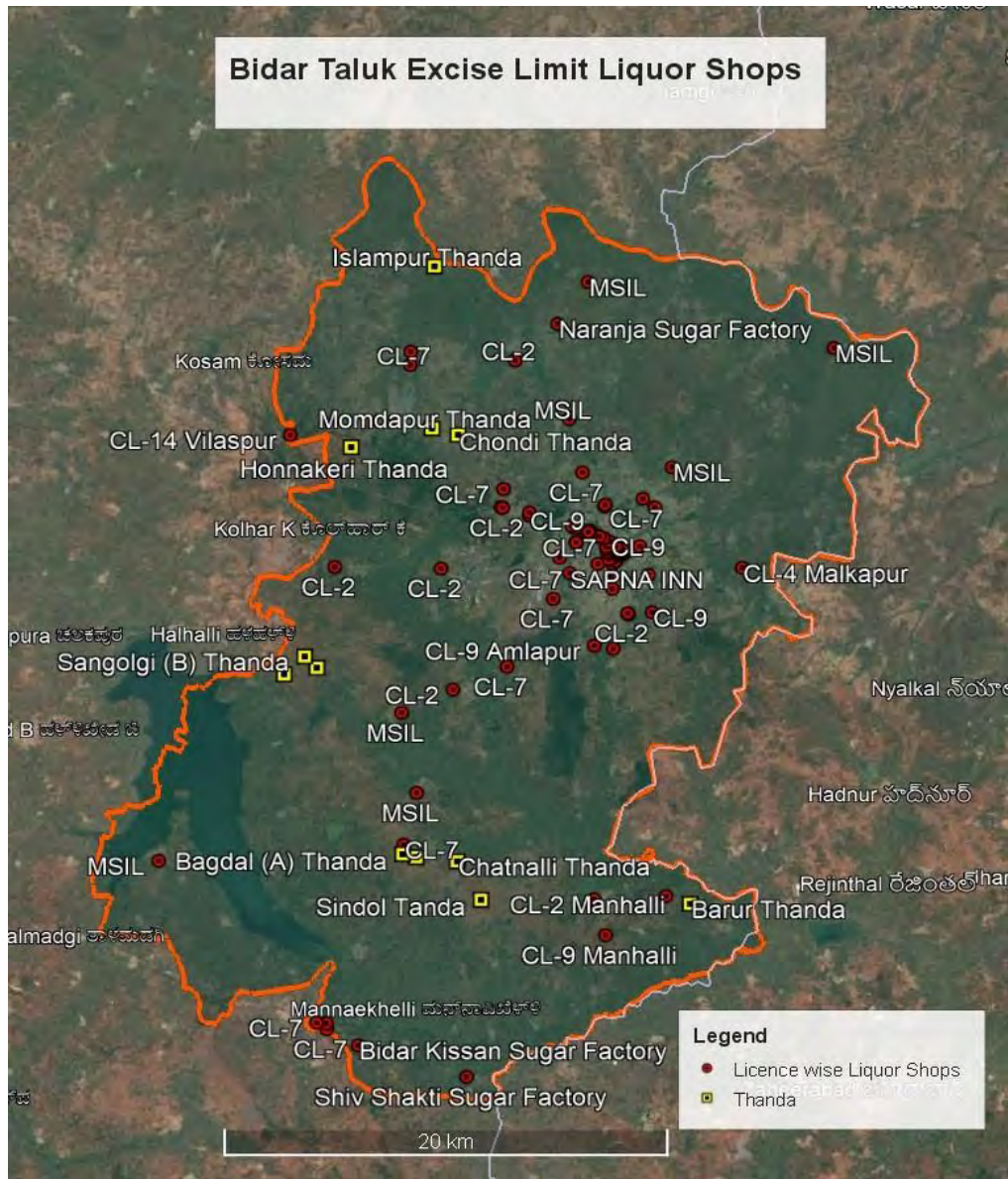
Map 6: Showing NDPS item Seized Location Blackspots





Activity -5

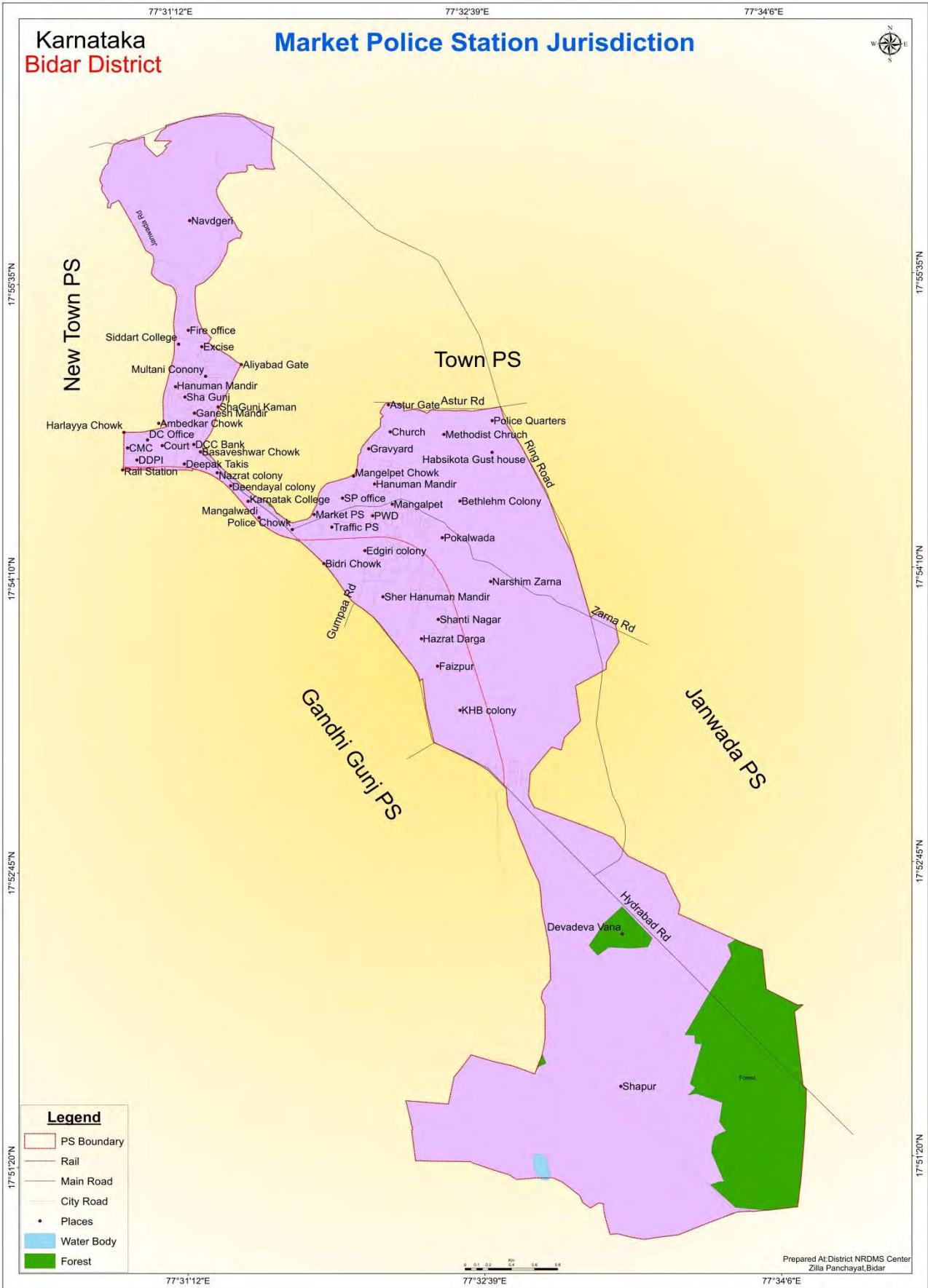
Title of work	Identification and Mapping of Excise limit Licensed Liquor Shops
Department Name	Excise Department
Objectives	It helps Identify where liquor shops are located across a region, detect clustering, over-concentration, Ensure shops follow legal distance rules (e.g., from SH,NH,Schools, temples, hospitals),Monitor adherence to zoning laws and licensing policies,Assist government agencies in deciding where new licenses can be issued
Data Used	Latitude and Longitude of Shops Locations, Habitation Location and Thanda Location.
Methodology	Marked locations of shops on Google Earth ensuring the location position with the help of excise officers.



Map 7: Showing Bidar Taluk Excise limit Licensed Liquor Shops

Activity -6

Title of work	Market Police Station Jurisdiction Mapping
Department Name	PSI Market Police Station
Objectives	It helps in Geographical boundaries identification and operational responsibilities of police station. This helps ensure effective law enforcement, accountability, and public service delivery. Avoid overlap or gaps between jurisdictions, Distribute manpower and infrastructure based on area size, population, and crime rate
Data Used	Road network, Natural Assets Latitude and Longitude of PS, Village Boundary and local important Assets.
Data Process	Available village/ward limits are clipped using arc map An approximate boundary is created imported inn Google earth Important assets like water body, railway station, circles are marked on Google earth. To a map or a jurisdiction boundary roads are imported from database and clipped and generated jurisdiction map
Type of Data Provided	PDF Maps Provided



Map 8: Showing Market Police Station Jurisdiction with Beat System

2. Training Programmes Attended:

1. Attended one day training regarding “**Human Development Index**” at Zilla Panchayat, Bidar on 20 January 2026.
2. Attended one day training regarding “**Human Development Index**” at Zilla Panchayat, Bidar on 21 February 2026.

3. Training Imparted to Line Department:

1. Provided 2-day GIS training to newly appointed Village Administrative Officer, Revenue Department in Bidar district on 05-02-2026 to 06-02-2026.

4. Science Outreach Activities:

No Science Outreach Activities were conducted during this period.

5. Conclusion:

A) Summary of Activities Under Take.

During this period district NRDMS center, ZP Bidar provided various Maps, data and report to Zilla Panchayat Office, Deputy Commissioner Office and various line department, pertaining to implementation of various activities and assist district administration in disaster management.

B) Commitment to Improve NRDMS Activities.

District NRDMS Centre ZP Bidar is committed to provide quality and scientific assistance to department for implementation of developmental activities in district.

District NRDMS center is also committed to update the existing data base as up to date to enhance its performance and to assist the departments.

Centre is also committed to learn and update our self to latest GEO SPATIAL technology and other software to improve our efficiency.

6. Annexures:

List of Maps:

Map 1: Showing PMGSY Proposed Road

Map 2: Showing Road wrk Maintennce Under KKRDB and 3054 Head

Map 3: Showing Basavakalyan Taluk TP Delimatation

Map 4: Showing Basavakalyan Taluk ZP Delimatation

Map 5: Showing Karanja Reservoir Within 5Km LULC

Map 6: Showing NDPS item Seized Location Blackspots

Map 7: Showing Bidar Taluk Excise limit Licensed Liquor Shops

Map 8: Showing Market Police Station Jurisdiction with Beat System