



Bengaluru Urban District



**Technical Report During the Month of
December 2025 - March -2026**

Submitted To:

Co-ordinator

Natural Resources Data Management System
Karnataka State Council for Science & Technology,
IISc, Bengaluru - 560 012.

Submitted By:

Ms. Niveditha B

Project Associate

District NRDMS Centre
Bengaluru Urban Zilla Panchayat

December 25 - March-2026

Table of Contents		
SI No	Particulars	Page No.
1	NRDMS Centre & NRDMS Centre Activities (August– November 2025).	2-3
2	Training Programme Attended	3
3	Conclusion.	4
4	Annexures	5-9

1.NRDMS Centre Activities (December -2025 and March -2026):

In Bengaluru Urban District, spatial mapping data for government infrastructure, schools, training Centres, PHCs, Hospitals etc. These platforms integrate raw data taken from various "Line Departments" (e.g., Education, Health, welfare,) included geocoded information, including latitude and longitude coordinates building ownerships.

Series of thematic maps for the Bengaluru Urban District

✚ Rainfall Map of Bengaluru urban District

The primary dataset consisted of daily rainfall records for the year 2025, sourced from the **India Meteorological Department (IMD)**. To visualize the spatial distribution of this rainfall across Bengaluru Urban's Districts and taluks (North, South, East, Anekal, and Yelahanka), an Isohyetal Map is created in ArcGIS using the Inverse Distance Weighting (IDW) interpolation method. This method assumes that the rainfall at an unmeasured location is a weighted average of the rainfall at nearby rain gauges, with weights decreasing as the distance from the gauge increases.

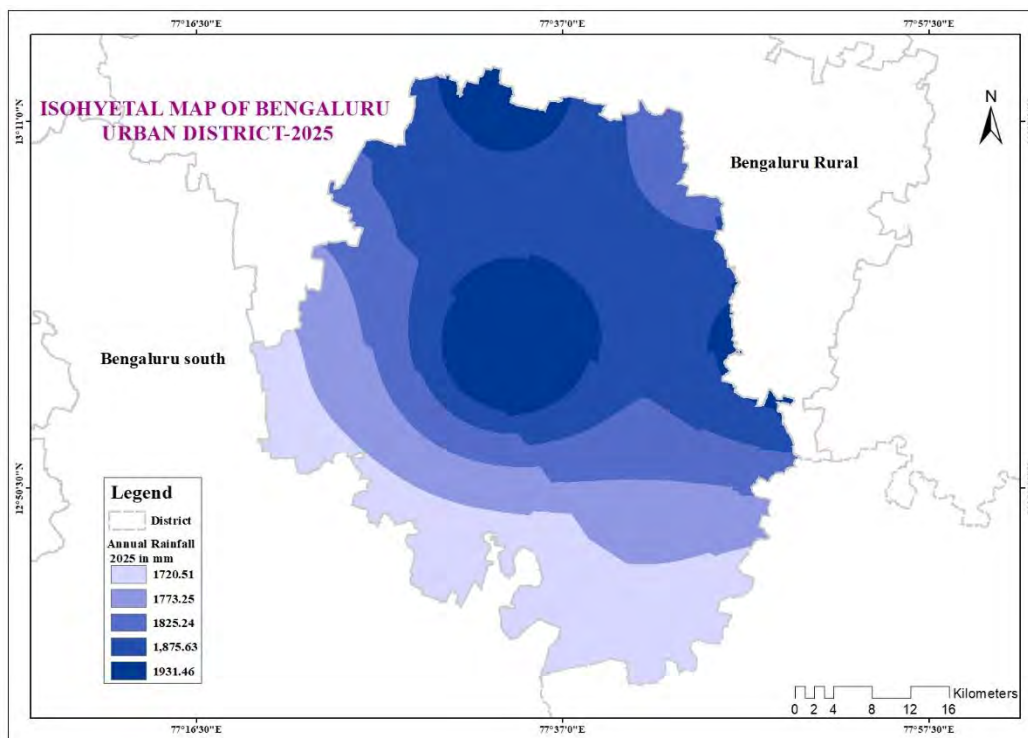


Fig 1: showing Isohyetal Map of Bengaluru Urban district-2025

Administrative & Rural Maps

- Grama Panchayats: A district-wide Map, calculating and tabulating the specific area of each Grama Panchayat.
- Village Map: Detailed Mapping of all villages within Yelahanka Taluk.

Healthcare & Wellness Department Infrastructure Location Maps

- **Department of AYUSH:** Mapping of the District and Directorate offices, including building status and GPS coordinates for:08 Government Ayurveda Clinics and 01 Ayurveda Hospital.01 Homeopathy Clinic and 02 Unani Clinics.
- **Health and Family Welfare:** Spatial data for the District Health Office and a network of facilities including:36 Primary Health Care Centres (PHCs) and 123 Sub-Centres.03 Community Health Centres and 04 Taluk Hospitals.
- **Animal Husbandry:** Location data for the Deputy Director’s office, 19 Veterinary Hospitals, 40 Veterinary Clinics, 10 Primary Veterinary Centres, and 04 Taluk Hospitals.

Agriculture & Allied Sector Infrastructure Location Maps

- **Agriculture:** Mapping of Taluk/District offices, the District Agriculture Training Center, Pesticide Residue Analysis Laboratory, 11 Raitha Samparka Kendras, and a Seed Production Center.
- **Horticulture & Sericulture:** GPS points and building status for all Taluk and District offices, including Sericulture Technical Service Centres.
- **Forestry & Fisheries:** Spatial data of administrative offices, Aqua Ponds for Fisheries, and Departmental Nurseries of Forestry.

Welfare & Education Departments Infrastructure Location Maps,

- **Women and Child Development:** A comprehensive map of 2,877 Anganwadi’s across the district (categorized by Taluk), including GPS points and ownership status (Rented vs. Owned buildings).

- Social Welfare: Mapping of 05 offices, 68 hostels, and 05 residential schools (Dr. B.R. Ambedkar and Morarji Desai schools).
- Minority Welfare: Spatial data for 05 offices, 27 hostels, and 17 Maulana Azad Model Schools.
- Backward Classes Welfare: Mapping of 06 departmental offices and 66 hostels.
- 🚦 Youth & Sports
 - **Youth Empowerment and Sports:** Location mapping and GPS coordinates for 05 Stadiums within the district.

2. Training Programmes Attended

- **Training program of Census of India-2027**
- Date: 2nd and 3rd of March 2026
- Subject: **Census of India-2027**
- **Department: District Collector's Office**
- **Names of staff who attended: Deputy Commissioner and Additional Deputy Commissioner, Bangalore Urban, Chief Planning Officer and Project Estimate and Evaluation Officer, Bangalore Urban Zilla Panchayat.**

3. Training Imparted to Line Departments: Nill

4. Science Outreach Activities: Nill

5. Conclusion

The District NRDMS Supporting all line departments, Zilla Panchayat, Planning Section with GIS tools for Planning District development activities using GIS tool. The centre also handling Following works:

- a) Location Maps for various Department in Bengaluru Urban District and offices building
- b) Village Map of Yelahanka Taluk in Bengaluru Districts.
- c) Map of Grama Panchayats in Bengaluru Urban district.
- d) KGIS Road side Plantation Porta
- e) Supporting to MGNREGA Section to Prepare GIS Based Grama Panchayat Action Plans.
- f) Technical Support to Planning Section to Prepare the MPIC and DHDR & ISDDP reports.
- g) Technical Support to Planning Section Handling Avolokana, Monitoring IPAAP, PAI Portal, and SS-Yojana Draft Plan Portal.

6. Annexures

6.1 District Thematic Maps:

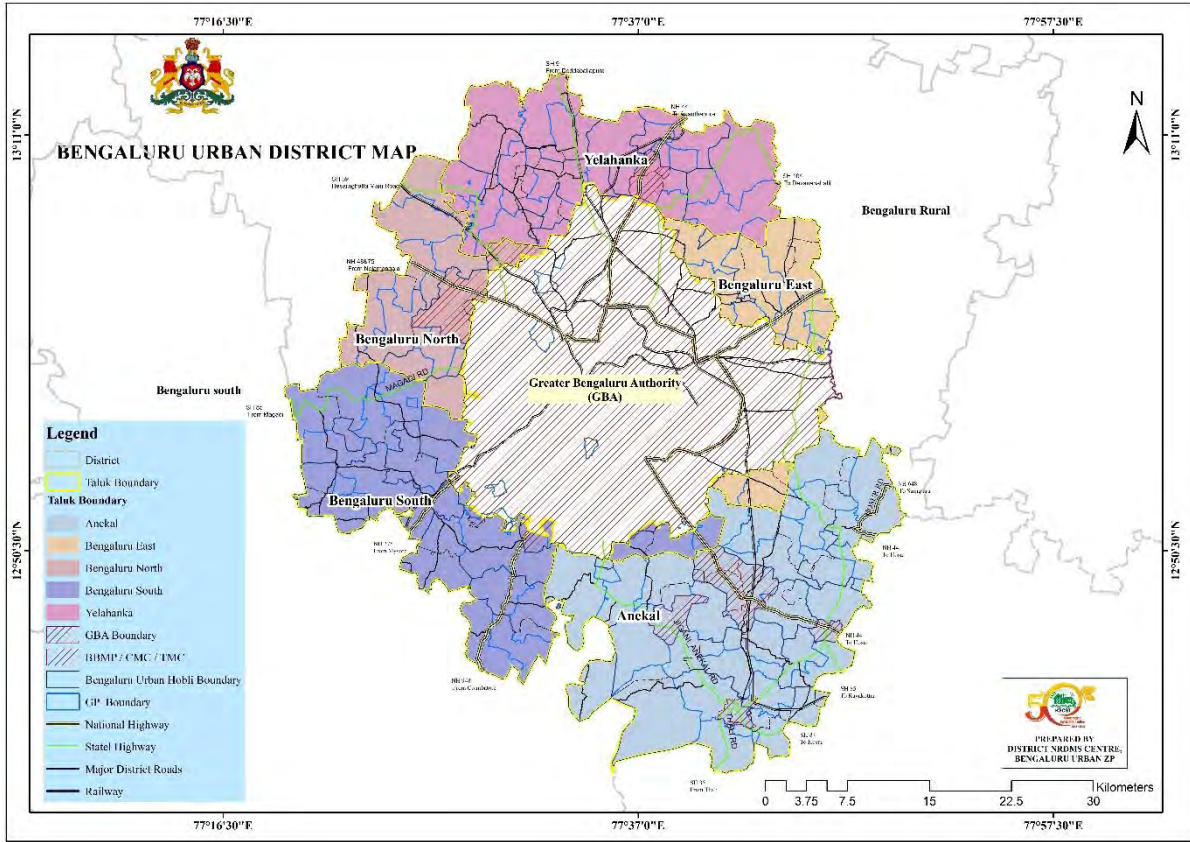


Fig :2 District Map of Bengaluru urban District

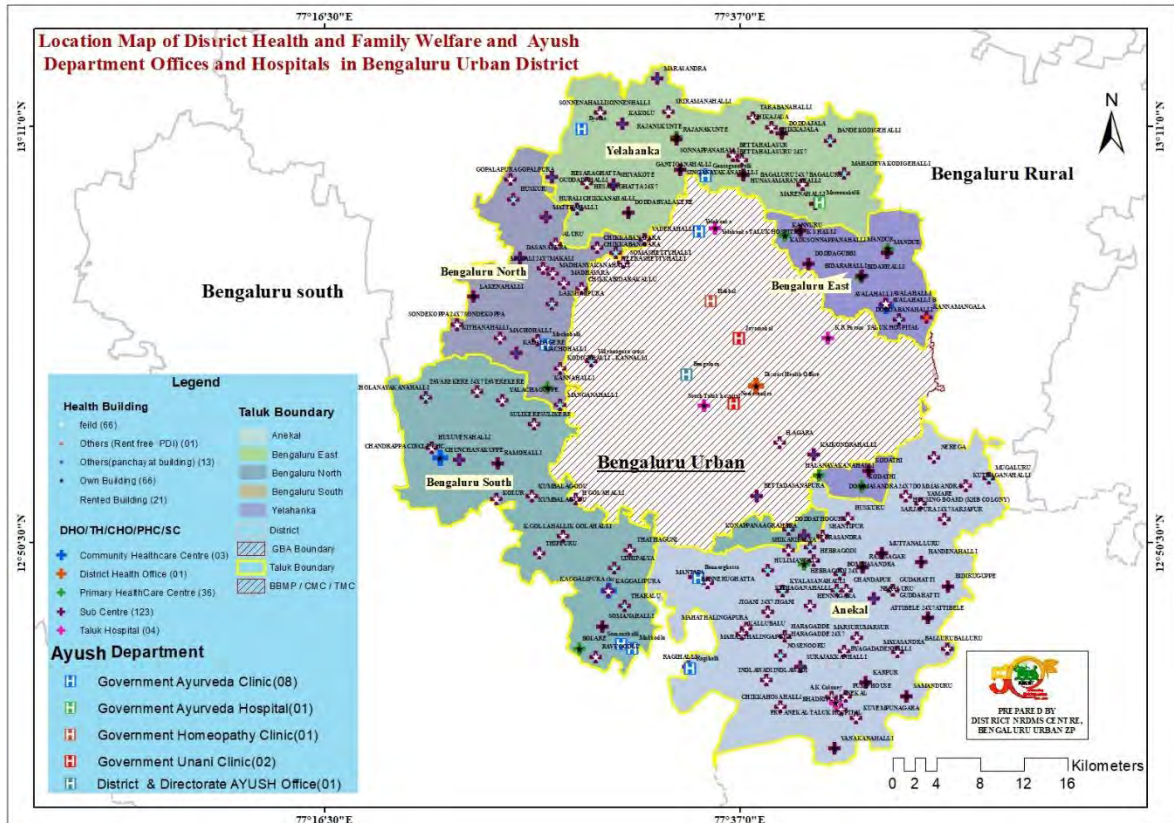


Fig 3: Location Map of Health Department Hospitals in Bengaluru urban District

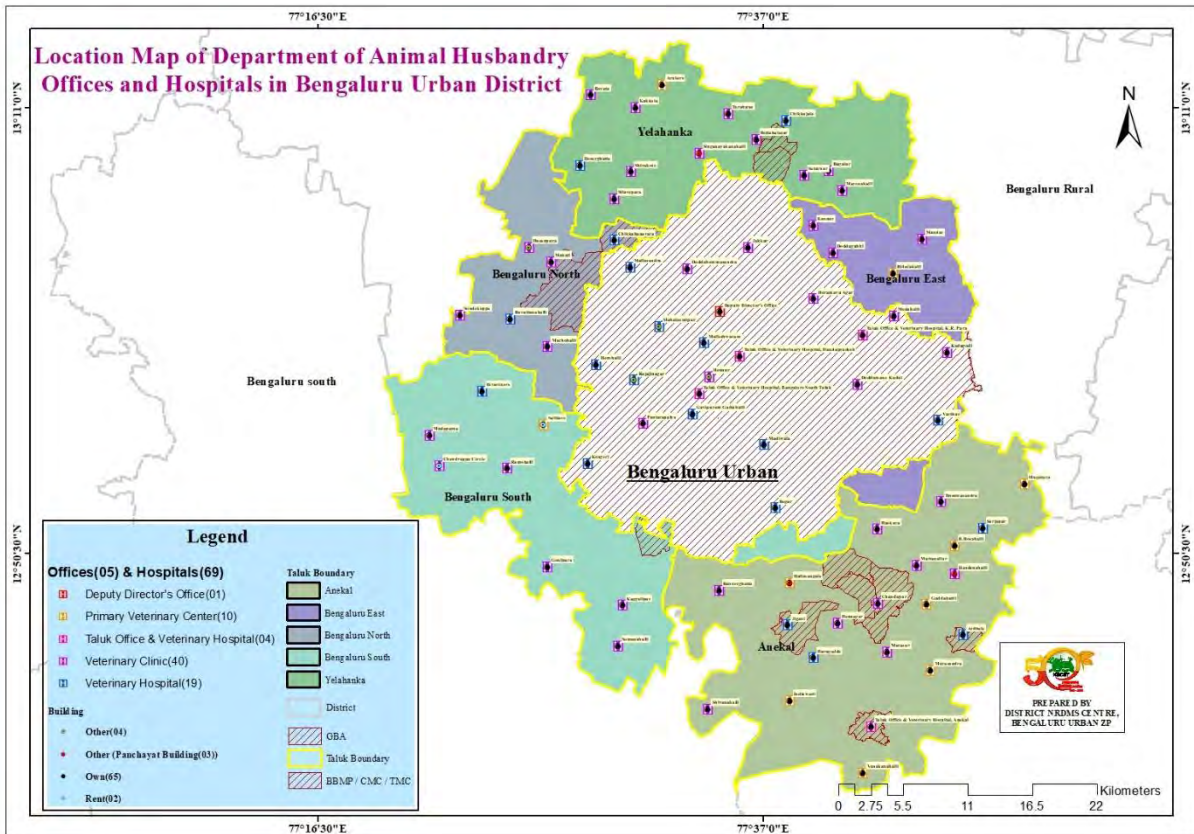


Fig 4: Location Map of Animal Husbandry Department Hospitals in Bengaluru urban District

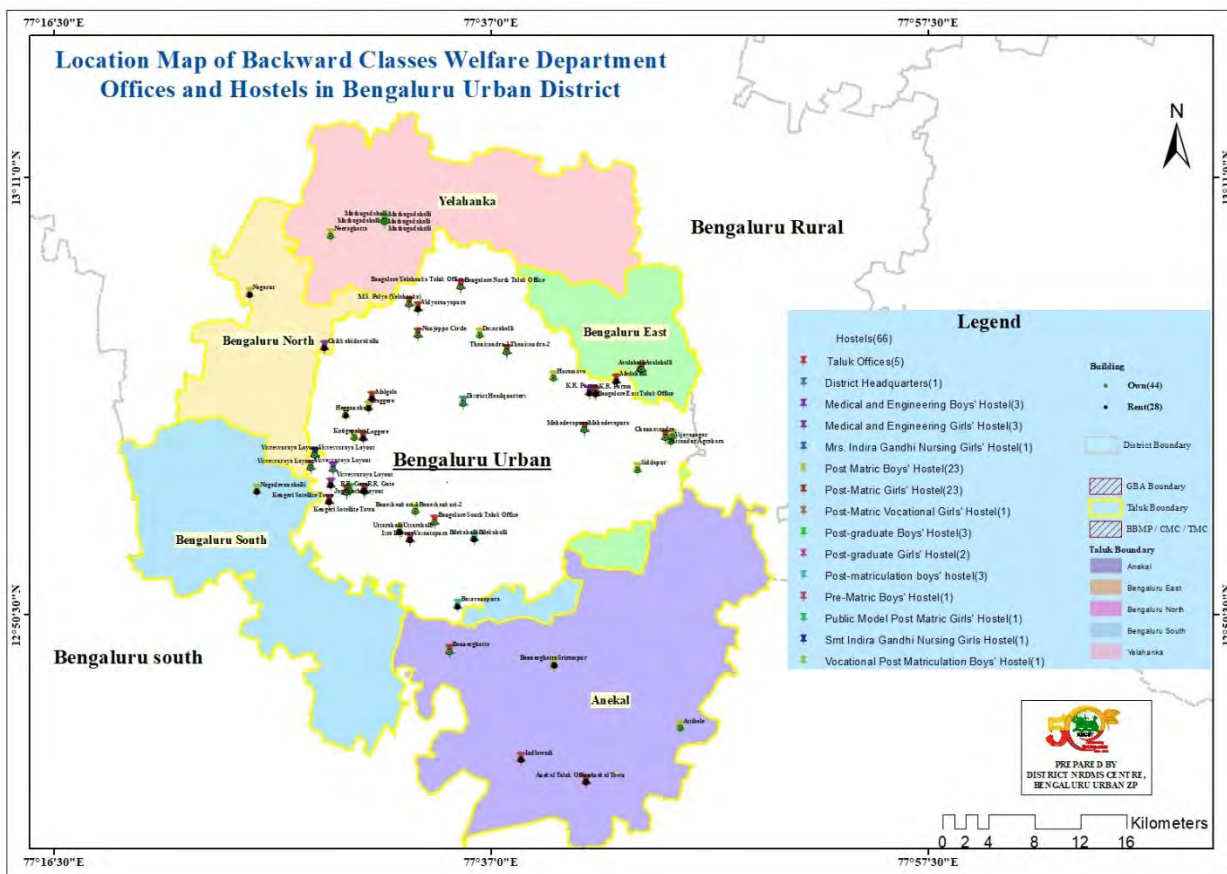


Fig 5: Location Map of Backward Classes Welfare Department Hostels in Bengaluru urban District

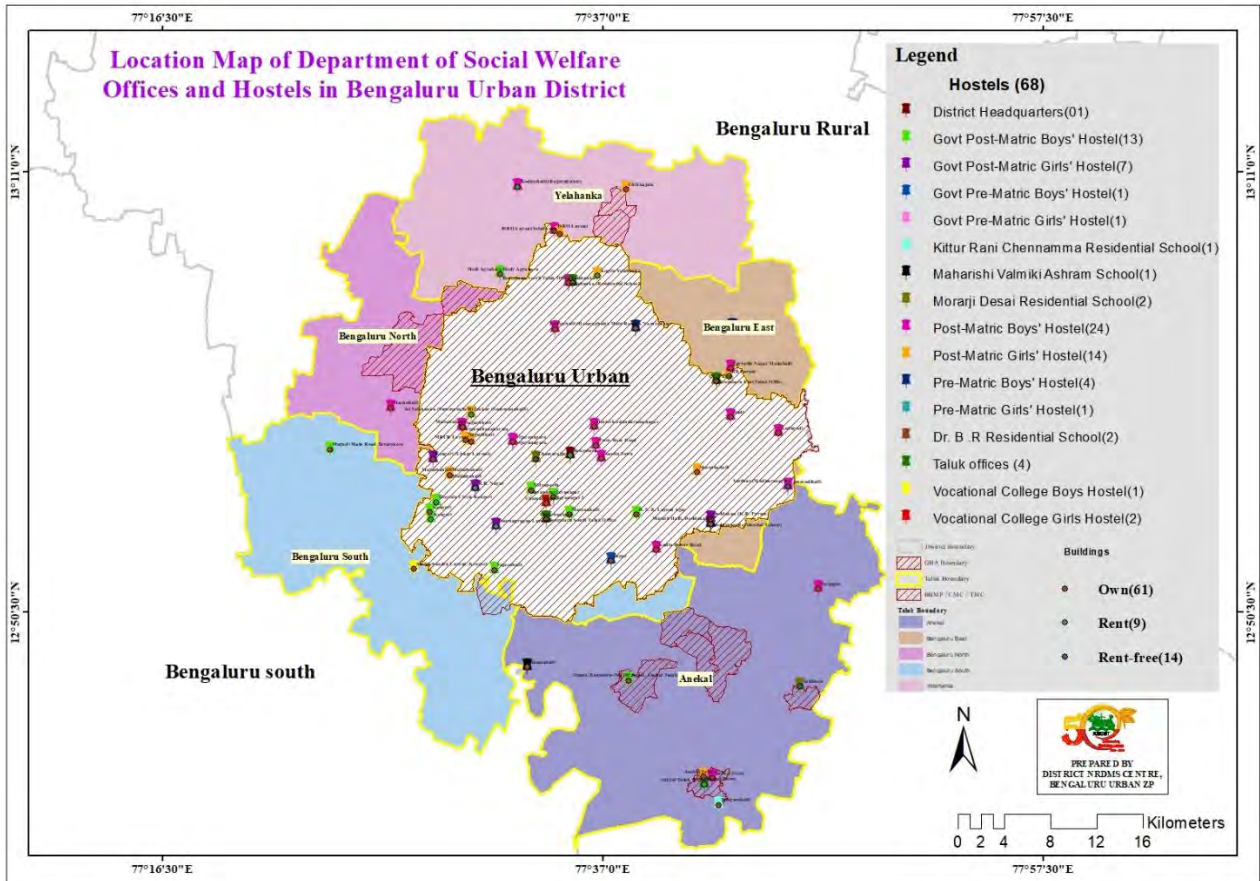


Fig 6: Location Map of Social Welfare Department Hospitals in Bengaluru urban District

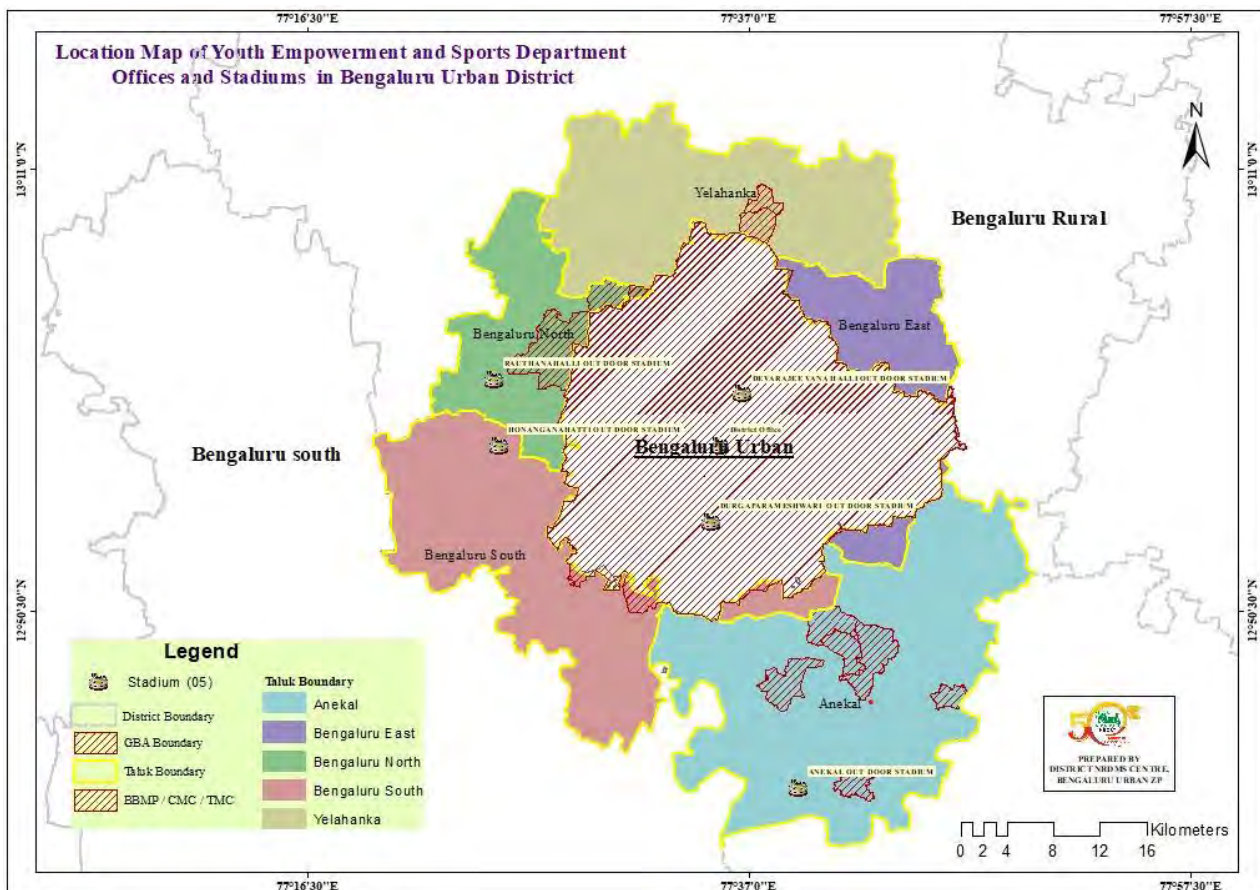


Fig 7: Location Map of Youth Empowerment and Sports Department Stadiums in Bengaluru urban District

6.2 Photographs of Training Programmes



Fig 8: Photographs of Training at DC Office Bengaluru urban