



# Technical Report



## Kalaburagi District

(December 2025 – March 2026)

**Submitted by:**

Bhimshen L kulkarni

NRDMS District Centre, Kalaburagi

**Karnataka State Council for Science and Technology (KSCST) Indian Institute of Science  
Campus, Bengaluru – 560012**

**CONTENT**

S.NO	ACTIVITY NAME	REMARKS	PAGE NO
1	Basic information of the district.		2
2	Geographic features		3
3	NRDMS Background of the District:		8
4	Key Activities Undertaken during December 2025 to March 2025		11
4.1	School infrastructure GIS mapping (Chittapur Taluk)	-	11
4.2	Relocation Maps for Flood-Prone Habitations along Bheema and Kagina Rivers, Kalaburagi District	-	14
4.3	GIS Mapping of Liquor Shop Locations and License Classification in Chittapur, Kalagi, and Shahabad Taluks	-	16
5	Training Programmes Attended:	-	22
6	Training Imparted to Line Department:		22

## 1. Basic information of the district:

**District Name:** Kalaburagi District

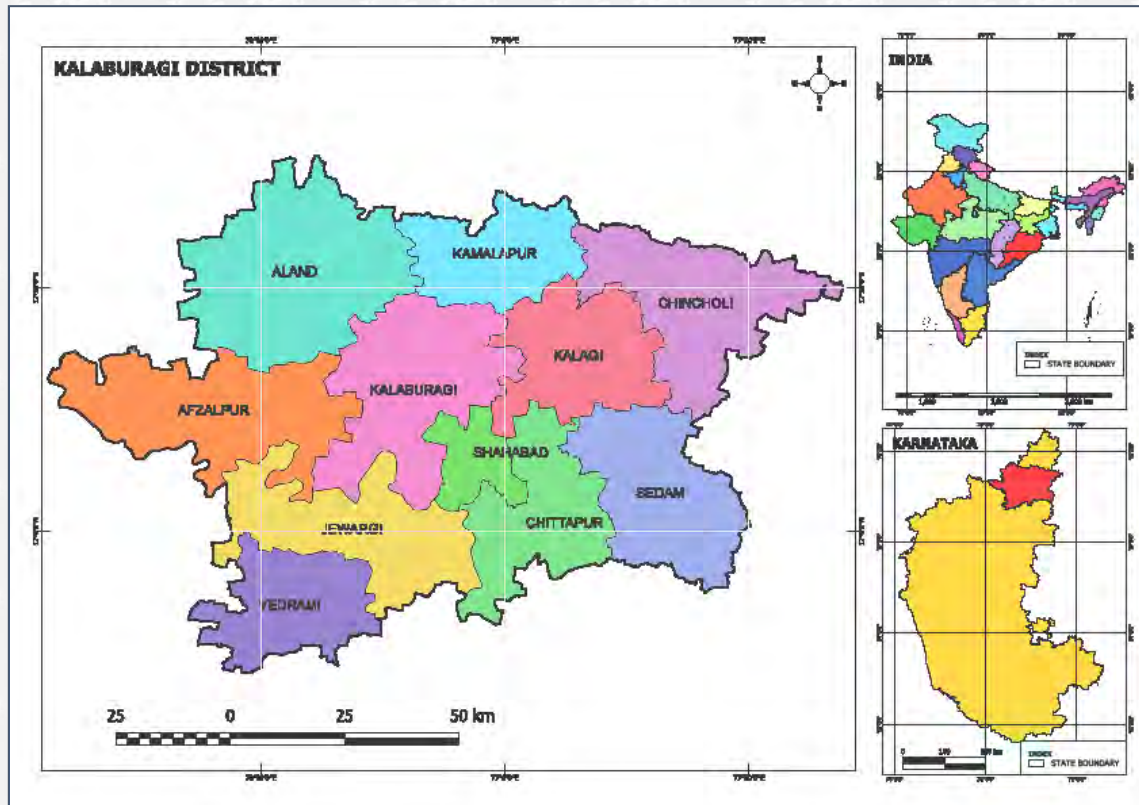
**Division:** Kalaburagi Division

**District NRDMS Centre Establishment Year:** 1993-1994

**Headquarter:** Kalaburagi

**Chief Planning Officer:** Shri SS Mathapathi

**Chief Executive Officer:** Bhanwar Singh Meena IAS



**Map:** Kalaburagi district location map

Kalaburagi (also known as Gulbarga) is a district located in the northern part of the Indian state of Karnataka. The district headquarters is located in the city of Kalaburagi.

The district is currently divided into 11 taluks, which are administrative subdivisions. The taluks of Kalaburagi district are: Afzalpur, Aland, Chincholi, Chitapur, Kalaburagi, Jevargi, Sedam, Shahabad, Kalagi, Kamalapur & Yedrami. Each taluk is further divided into several villages and towns. Kalaburagi taluk is the most populous and serves as the district headquarters.

Geographically, Kalaburagi district is situated in the Deccan plateau and is characterized by its flat terrain with occasional low hills. The district is spread over an area of 10,990 square kilometers and is bordered by the districts of Bidar in the north, Yadgir in the east, Raichur in the south, and Bijapur in the west.

The population of Kalaburagi district is approximately 25 lakhs people, according to the 2011 census. The major language spoken in the district is Kannada, although Urdu is spoken by a significant minority.

Agriculture is the main source of livelihood for the people of Kalaburagi district, with crops such as jowar, Tur, and cotton being the major ones.

Kalaburagi is a historical city and has been ruled by various dynasties such as the Chalukyas, the Bahmanis, and the Adil Shahis. It is home to several historic monuments, including the Sharana Basaveshwara Temple,

the Khwaja Banda Nawaz Dargah, and the Gulbarga Fort. The district also has several wildlife sanctuaries, including the Great Indian Bustard Sanctuary and the Bhima River Wildlife Sanctuary.

Kalaburagi district of Karnataka state has a semi-arid to arid climate. The district experiences hot and dry summers, with temperatures ranging from 35°C to 45°C, and cool winters with temperatures ranging from 15°C to 30°C. The monsoon season lasts from June to September, with an average annual rainfall of around 600-800 mm.

The agro-climatic conditions in the district are suitable for the cultivation of crops such as pulses, oilseeds, and cotton. The predominant cropping systems in the region are rain fed agriculture and dry land farming. The soil in the district is mostly red to black cotton soil, which is suitable for the cultivation of these crops. The district is home to the Krishna river basin and the Bhima river basin, and irrigation facilities are mainly dependent on these river basins. The district also has a few small reservoirs and tanks, which are used for irrigation purposes.

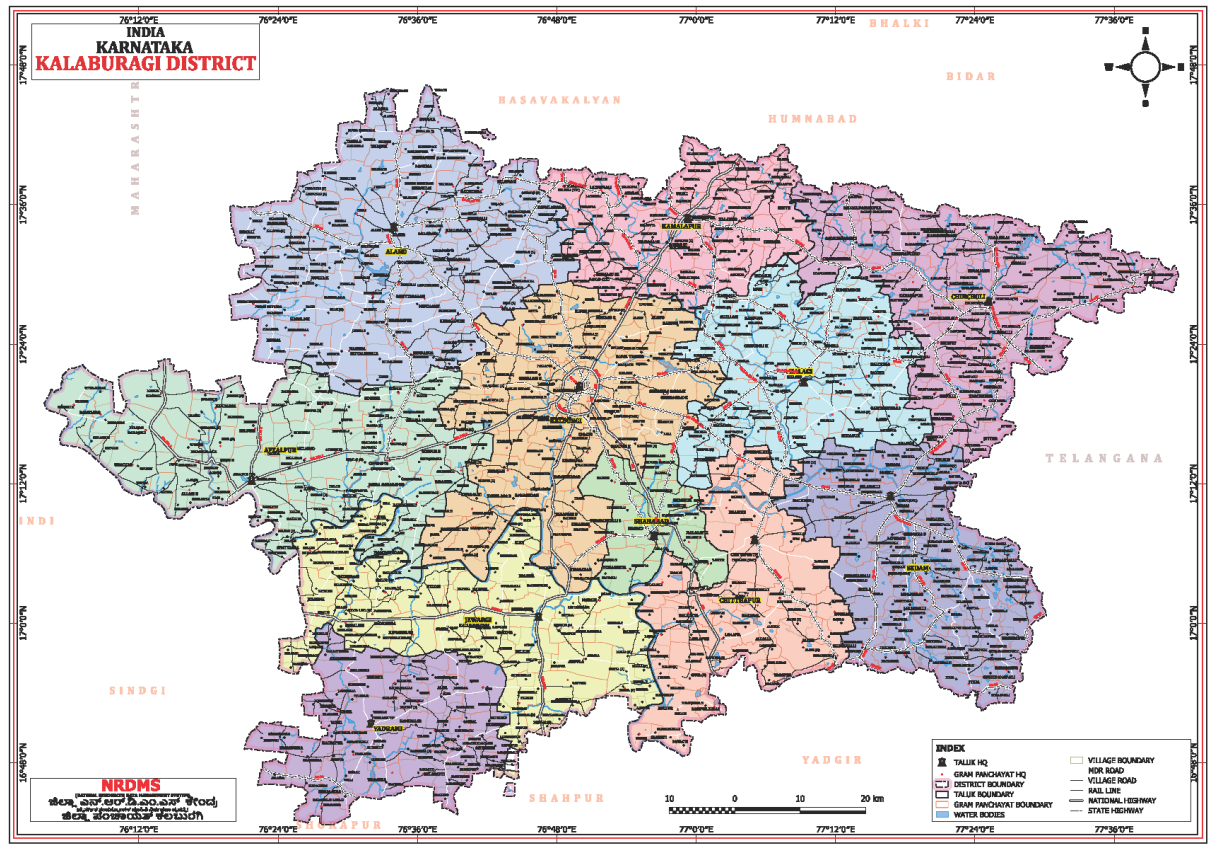
## 2. Geographical Features:

### A. Location & Area

- Located in the northeastern part of Karnataka, bordering Maharashtra and Telangana.
- Spread over an area of 10,951 sq. km, making it one of the larger districts in the state.
- Lies between 17.12°N – 17.46°N latitude and 76.04°E – 77.42°E longitude.

**Table - 1** showing administrative details of Kalaburagi district. Taluk-wise Administrative Setup

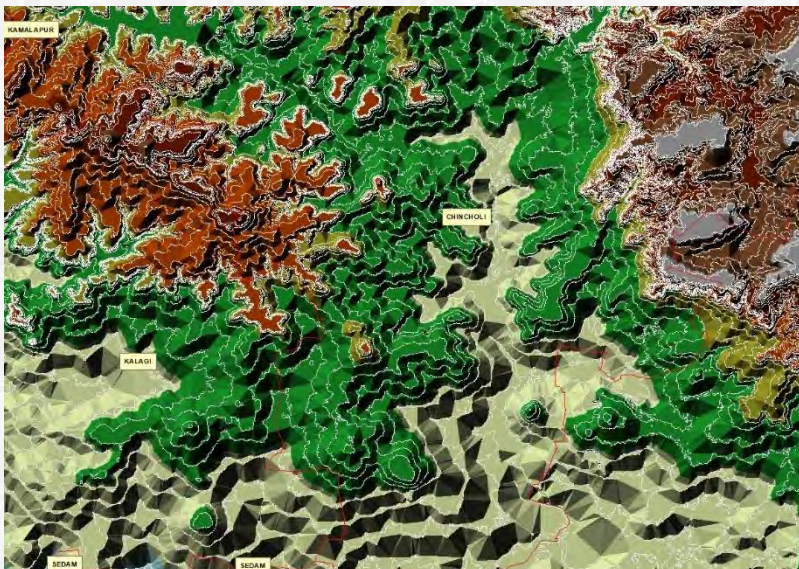
Sl No	Taluk	No. of Gram Panchayats	No. of Villages	Hoblis
1	Afzalpur	28	84	3
2	Aland	42	123	5
3	Chincholi	29	101	4
4	Chittapur	22	95	3
5	Gulbarga	28	110	4
6	Jewargi	25	87	3
7	Kalagi	18	58	2
8	Kamalapur	18	51	2
9	Sedam	27	95	4
10	Shahabad	7	35	1
11	Yadrami	17	79	2
<b>Total</b>	-	<b>261</b>	<b>918</b>	<b>33</b>



**Map :** District map with administration boundaries and road network.

### **B. Topography:**

- Situated on the Deccan Plateau with undulating plains and low-lying hills.
- Average elevation: ~454 meters above sea level.
- The land is mostly flat but slightly sloping towards the southeast.



**Map:** Digital Elevation map

### **C. Soils:**

- Predominant across the district, this fertile soil is ideal for crops like cotton, groundnut, jowar, wheat, and pulses, which are major agricultural outputs.
- Patches of red soil and lateritic soil found in higher terrain.

**D. Rivers & Water Bodies:**

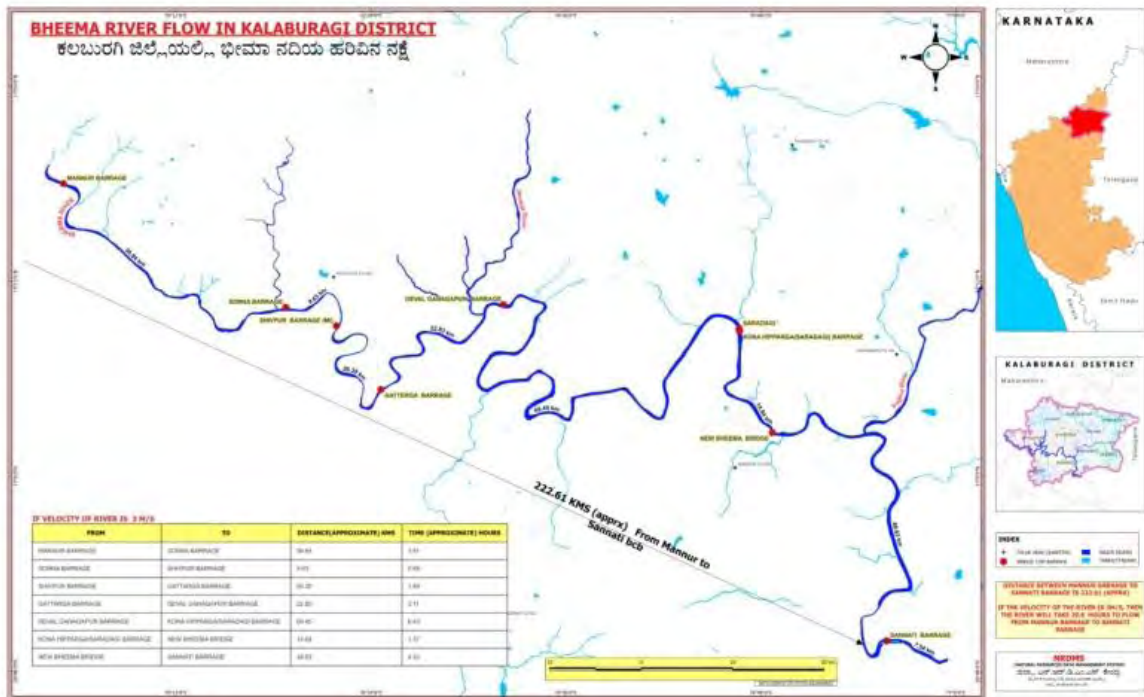
- Major river: Bhima River, flowing west to east; supports irrigation and drinking water.
- Other rivers: Kagina, Amarja, and Bennithora—mostly seasonal.

Kalaburagi district is located in the Krishna River basin and the Bhima River basin. The district is drained by several streams and tributaries of these rivers, which originate from the surrounding hills and flow towards the plains. The major rivers in the district are the Bhima and the Kagina.

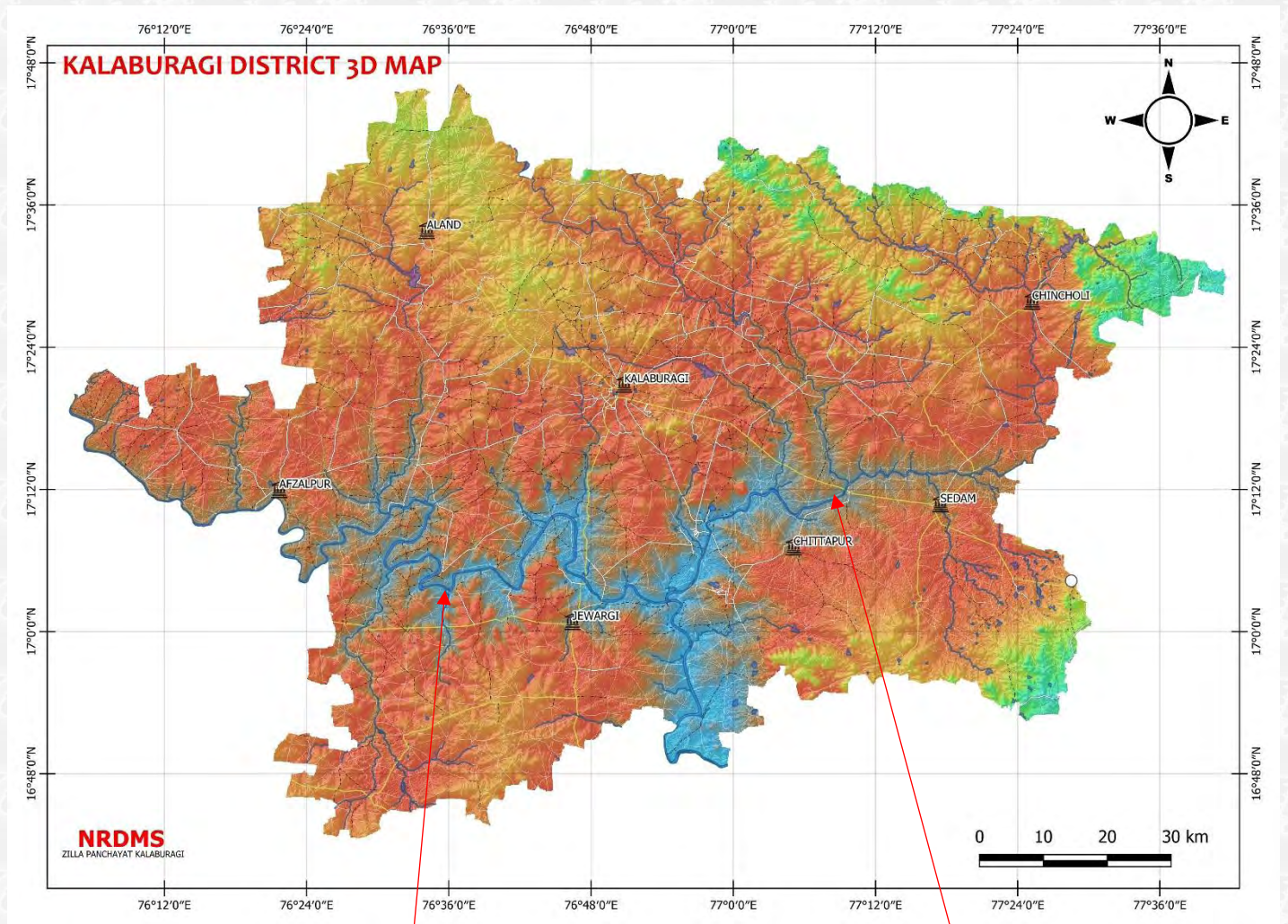
The Bhima River is the largest river in the district and originates from the Bhima Shankar hills in Maharashtra. The river enters Kalaburagi district near Sedam and flows for about 94 km within the district before joining the Krishna River in Andhra Pradesh. The river receives most of its water during the monsoon season, and its flow is highly variable depending on the rainfall. The river also provides water for irrigation purposes in the district.

The Kagina River is a tributary of the Bhima River and originates from the hills near Chincholi in the district. The river flows for about 50 km before joining the Bhima River near Jevargi. The river is a seasonal stream and is mostly dry during the summer months.

Apart from the rivers, the district also has several small reservoirs, tanks, and check dams that are used for irrigation and water supply purposes. The groundwater in the district is mostly confined to the weathered and fractured zones of the hard rock formations, and the aquifer is generally shallow and unconfined.



**Map:** Showing Bheema river flow in kalaburagi district. This is the major river in the district.



**Map:** 3D map showing hillshade and rivers flowing in the kalaburagi district

**Bhima River**

**Kagina River**

#### **E. Climate:**

- Semi-arid climate with distinct summer, monsoon, and winter seasons.
- Summer: Hot and dry, often exceeding 40°C.
- Monsoon: June–September; average annual rainfall ~777 mm.
- Winter: Mild and dry, temperature drops to around 15°C.

### Average Annual Rainfall by Taluk

Taluk	Normal (mm)
Afzalpur	692
Aland	713
Chincholi	963
Chittapur	771
Kalaburagi	794
Jewargi	805
Sedam	791
Kalagi	766
Kamalapura	687
Yadrami	758
Shahbadha	758

**Table - 2** showing talukwise average rainfall

#### **F. Mineral Resources:**

- Rich in limestone, quartz, and fuller's earth.
- Presence of cement industries due to limestone availability.
- Minor presence of bauxite and granite.

#### **G. Seismic & Environmental Aspects:**

- Located in seismic zone II – considered a low-risk zone.
- Prone to droughts due to irregular rainfall and high evapotranspiration.

### 3. NRDMS Background of the District:

The **National Resource Data Management System (NRDMS)** is a program initiated by the Government of India to facilitate the collection, analysis, and dissemination of spatial and non-spatial data for effective planning and management of natural and man-made resources.

In **Kalaburagi District**, the NRDMS Centre was established to provide **GIS-based solutions and decision support systems** for district administration, line departments, and local governance bodies. The centre focuses on integrating modern technologies such as **Remote Sensing, Geographic Information Systems (GIS), and database management** to strengthen planning and development activities.

#### **Major activities of NRDMS in Kalaburagi District**

##### **1. Support to Revenue Department**

- Updating administrative boundaries (Taluks, Hoblis, Villages) and cadastral maps.
- Providing spatial data for land records, land use planning, and revenue management.
- Identifying flood-prone villages and areas for emergency response.

##### **2. Support to Police Department**

- GIS-based mapping of police jurisdictions, stations, and resources.
- Facilitating crime mapping and location analysis for better law enforcement planning.
- Integration of police data with other administrative resources for rapid decision-making.

##### **3. Support to All Line Departments of Zilla Panchayat**

- **Water Supply & Irrigation:** Prioritization of rural water supply projects, rejuvenation of minor irrigation tanks, watershed planning.
- **Health & Education:** Mapping of schools, hospitals, health centers, and monitoring of service delivery.
- **Urban & Rural Infrastructure:** Mapping roads, public utilities, and village assets for efficient planning and resource allocation.
- **Tourism & Environment:** GIS-based monitoring of tourist spots, forest cover, natural resources, and environmental planning.

#### 4. Disaster Management and Emergency Planning

- Flood-prone area mapping and identification of relief centers.
- GIS-based decision support for rapid response during natural calamities.

#### 5. Capacity Building & Outreach

- Training Zilla Panchayat staff and line department officials in GIS and spatial data applications.
- Conducting science outreach activities in schools with KSCST support.

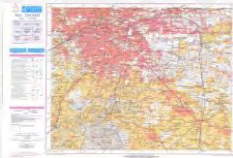
#### 6. Decision Support & E-Governance

- District-wide resource and infrastructure profiling for integrated planning.
- Support for election management systems and administrative planning.

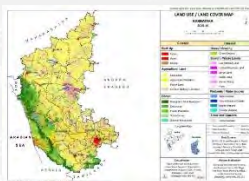
The NRDMS Centre in Kalaburagi acts as a central hub for resource management and planning, providing critical support to Revenue, Police, and all line departments of the Zilla Panchayat, ensuring data-driven governance and efficient service delivery.

We use Geospatial Data from various National/State Survey and Mapping Organisations

- ✓ Survey of India – Base maps (Scale 1:50k)



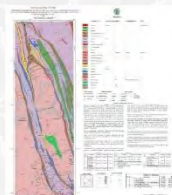
- ✓ NRSC/SRSC - Thematic maps (Scale 1:50k, 1: 25k, 1: 10k)



- ✓ Survey Settlement and Land Records - cadastral (Scale 1: 7920)



- ✓ Non-spatial (Census & MIS of line departments)
- ✓ GSI/NBSSLUP/FSI etc. – Specific themes



- ✓ POI/Asset mapping – (line departments & NRDMS)
- ✓ Satellite imageries/GPS – being used for updation and data capture
- ✓ KSNDDMC/IMSD – Climate/weather etc.

## Major Databases Maintained at NRDMS Centr Kalaburagi

- |  |   |
|--|---|
| <ul style="list-style-type: none"> <li>• <b>Natural Resources</b> <ul style="list-style-type: none"> <li>– Drainage</li> <li>– Waterbody</li> <li>– Geology</li> <li>– Soil</li> <li>– Lineaments</li> </ul> </li> <li>• <b>Thematic Data</b> <ul style="list-style-type: none"> <li>– Geomorphology</li> <li>– Land Use/Land Cover (LULC)</li> <li>– Slope</li> <li>– Groundwater prospectus</li> <li>– Lithology, etc.</li> </ul> </li> <li>• <b>Administrative Boundary</b> <ul style="list-style-type: none"> <li>– District</li> <li>– Taluk</li> <li>– Hobli</li> <li>– Gram Panchayat</li> <li>– Village</li> <li>– City / Towns</li> <li>– Wards</li> </ul> </li> <li>• <b>Constituency Boundary</b> <ul style="list-style-type: none"> <li>– LAC (Legislative Assembly Constituency)</li> <li>– PC (Parliamentary Constituency)</li> <li>– Zilla Panchayat</li> <li>– Taluk Panchayat</li> <li>– Gram Panchayat</li> </ul> </li> <li>• <b>Watershed Levels</b> <ul style="list-style-type: none"> <li>– Basin</li> <li>– Catchment</li> <li>– Sub catchment</li> <li>– Watershed</li> <li>– Sub watershed</li> <li>– Micro watershed</li> </ul> </li> <li>• <b>Transportation</b> <ul style="list-style-type: none"> <li>– National highway</li> <li>– State Highway</li> <li>– MDR Roads</li> <li>– Railway</li> <li>– Village Roads</li> <li>– Residential Roads (City &amp; towns) etc.</li> </ul> </li> </ul> | <ul style="list-style-type: none"> <li>• <b>Rural drinking water supply</b> <ul style="list-style-type: none"> <li>– Borewell locations</li> <li>– Wells, Kalyani's and Kunte locations</li> <li>– Jack well locations</li> <li>– overhead tank locations</li> </ul> </li> <li>• <b>Police department infra</b> <ul style="list-style-type: none"> <li>– Police Stations jurisdiction</li> <li>– Commissionerate jurisdiction</li> <li>– Police station locations</li> <li>– Beat jurisdictions</li> <li>– Traffic police stations jurisdictions</li> </ul> </li> <li>• <b>Spatial Information on Infrastructure</b> <ul style="list-style-type: none"> <li>– Hostels</li> <li>– Schools</li> <li>– Colleges</li> <li>– Anganwadi</li> <li>– MI tanks</li> <li>– PRE tanks</li> <li>– Cold Storages</li> <li>– Religious place's locations</li> <li>– Major industry's locations (cement factories, sugar factories)</li> <li>– Major quarries</li> <li>– Check dams, BCB and Farm Ponds locations etc.</li> </ul> </li> <li>• <b>Headquarters</b> <ul style="list-style-type: none"> <li>– District</li> <li>– Taluk</li> <li>– Hobli</li> <li>– Village Settlements</li> <li>– TP (Town Panchayat)</li> <li>– ZP (Zilla Panchayat)</li> <li>– Tanda's locations</li> </ul> </li> <li>• <b>Health Department &amp; Veterinary Department</b> <ul style="list-style-type: none"> <li>– Government hospitals</li> <li>– UPHC locations</li> <li>– PHC, CHC &amp; Subcenters Locations</li> <li>– Animal Husbandry clinics</li> <li>– PHC &amp; CHC Jurisdictions</li> <li>– Private clinics and hospital's locations</li> <li>– Veterinary Hospitals</li> <li>– Veterinary Dispensaries</li> <li>– Veterinary Clinics</li> </ul> </li> </ul> |
|--|---|

## 1. Key Activities Undertaken during December 2025 to March 2025

**ACTIVITY 1: School infrastructure GIS mapping (Chittapur Taluk)**

<b>Title of work</b>	School infrastructure GIS mapping (Chittapur Taluk)
<b>Department Name</b>	CEO ZP Kalaburagi
<b>Objectives</b>	<ul style="list-style-type: none"> <li>• To map all schools in Chittapur Taluk with precise geographic coordinates.</li> <li>• To document infrastructure status (rooms, toilets, kitchens, compound walls, etc.).</li> <li>• To visualize deficiencies through thematic maps for easy interpretation.</li> <li>• To support the CEO and PRED in preparing an actionable plan for infrastructure improvement.</li> </ul>
<b>Data Used</b>	<p><b>School Location Data</b> Precise geographic coordinates (latitude/longitude) collected via existing government datasets (e.g., DISE)</p> <p><b>Infrastructure Inventory</b> Field documentation of classrooms, toilets, kitchens, compound walls, drinking water facilities, electricity, and playgrounds.</p> <p><b>Administrative Records</b> School codes, enrollment figures, and management type (government, aided, private) from Education Department databases.</p> <p><b>Spatial Layers</b> Base maps (taluk boundaries, village boundaries, road networks, water bodies) from Survey of India or GIS repositories.</p> <p><b>Photographic Evidence</b> On-site images to validate infrastructure status and support thematic mapping.</p>
<b>Data Process</b>	<p><b>1. Data Extraction</b> Download DISE/UDISE+ datasets for all schools in Chittapur Taluk. Extract relevant fields: school code, name, location identifiers, infrastructure attributes (rooms, toilets, kitchens, compound walls, etc.).</p> <p><b>2. Data Cleaning &amp; Validation</b> Remove duplicates and correct inconsistencies in school codes or names. Standardize infrastructure entries (e.g., "Available/Not Available" instead of varied text). Cross-check with field survey or GPS data to validate coordinates.</p> <p><b>3. Data Structuring &amp; Normalization</b> Organize data into normalized tables (School Profile, Infrastructure, Enrollment). Ensure uniform attribute formats for easy GIS integration.</p> <p><b>4. Geocoding &amp; Spatial Integration</b> Assign geographic coordinates to each school (from DISE or GPS survey). Integrate school points with base maps (taluk boundaries, villages, roads, water bodies).</p> <p><b>5. Thematic Mapping &amp; Visualization</b> Create thematic layers (e.g., schools without toilets, schools lacking compound walls). Apply clear symbology and legends for easy interpretation of deficiencies.</p> <p><b>6. Analysis &amp; Reporting</b> Generate summary tables and charts highlighting infrastructure gaps. Produce thematic maps to visually communicate deficiencies. • Compile actionable insights for CEO and PRED to prioritize interventions</p>
<b>Type of Data Provided</b>	PDF & JPEG File.

# Schools Requiring Compound Walls Chittapur Constituency (2025)

77°0'0"E



## SCHOOLS REQUIRING NEW COMPOUND WALL / EXTENSION

Sl No	School Name	Compound wall
01	govt. hps kanchipur	yes
02	govt. hps kanchipur	yes
03	govt. hps chelvi nagath vendra	yes
04	govt. hps kanchipur	yes
05	govt. hps kanchipur	yes
06	govt. hps kanchipur	yes
07	govt. hps kanchipur	yes
08	govt. hps kanchipur	yes
09	govt. hps kanchipur	yes
10	govt. hps kanchipur	yes
11	govt. hps kanchipur	yes
12	govt. hps kanchipur	yes
13	govt. hps kanchipur	yes
14	govt. hps kanchipur	yes
15	govt. hps kanchipur	yes
16	govt. hps kanchipur	yes
17	govt. hps kanchipur	yes
18	govt. hps kanchipur	yes
19	govt. hps kanchipur	yes
20	govt. hps kanchipur	yes
21	govt. hps kanchipur	yes
22	govt. hps kanchipur	yes
23	govt. hps kanchipur	yes
24	govt. hps kanchipur	yes
25	govt. hps kanchipur	yes
26	govt. hps kanchipur	yes
27	govt. hps kanchipur	yes
28	govt. hps kanchipur	yes
29	govt. hps kanchipur	yes
30	govt. hps kanchipur	yes
31	govt. hps kanchipur	yes
32	govt. hps kanchipur	yes
33	govt. hps kanchipur	yes
34	govt. hps kanchipur	yes
35	govt. hps kanchipur	yes
36	govt. hps kanchipur	yes
37	govt. hps kanchipur	yes
38	govt. hps kanchipur	yes
39	govt. hps kanchipur	yes
40	govt. hps kanchipur	yes
41	govt. hps kanchipur	yes
42	govt. hps kanchipur	yes
43	govt. hps kanchipur	yes
44	govt. hps kanchipur	yes
45	govt. hps kanchipur	yes
46	govt. hps kanchipur	yes
47	govt. hps kanchipur	yes
48	govt. hps kanchipur	yes
49	govt. hps kanchipur	yes
50	govt. hps kanchipur	yes
51	govt. hps kanchipur	yes
52	govt. hps kanchipur	yes
53	govt. hps kanchipur	yes
54	govt. hps kanchipur	yes
55	govt. hps kanchipur	yes
56	govt. hps kanchipur	yes
57	govt. hps kanchipur	yes
58	govt. hps kanchipur	yes
59	govt. hps kanchipur	yes
60	govt. hps kanchipur	yes
61	govt. hps kanchipur	yes
62	govt. hps kanchipur	yes
63	govt. hps kanchipur	yes
64	govt. hps kanchipur	yes
65	govt. hps kanchipur	yes
66	govt. hps kanchipur	yes
67	govt. hps kanchipur	yes
68	govt. hps kanchipur	yes
69	govt. hps kanchipur	yes
70	govt. hps kanchipur	yes
71	govt. hps kanchipur	yes
72	govt. hps kanchipur	yes
73	govt. hps kanchipur	yes
74	govt. hps kanchipur	yes
75	govt. hps kanchipur	yes
76	govt. hps kanchipur	yes
77	govt. hps kanchipur	yes
78	govt. hps kanchipur	yes
79	govt. hps kanchipur	yes
80	govt. hps kanchipur	yes
81	govt. hps kanchipur	yes
82	govt. hps kanchipur	yes
83	govt. hps kanchipur	yes
84	govt. hps kanchipur	yes
85	govt. hps kanchipur	yes
86	govt. hps kanchipur	yes
87	govt. hps kanchipur	yes
88	govt. hps kanchipur	yes
89	govt. hps kanchipur	yes
90	govt. hps kanchipur	yes
91	govt. hps kanchipur	yes
92	govt. hps kanchipur	yes
93	govt. hps kanchipur	yes
94	govt. hps kanchipur	yes
95	govt. hps kanchipur	yes
96	govt. hps kanchipur	yes
97	govt. hps kanchipur	yes
98	govt. hps kanchipur	yes
99	govt. hps kanchipur	yes
100	govt. hps kanchipur	yes

17°40'0"N

17°40'0"N

17°40'0"N

17°40'0"N

PREPARED AT  
**NRDMS**  
KALABURGI

0 5 10 km

### LEGEND

- SCHOOLS**
- COMPOUND WALL REQUIRED
- COMPOUND WALL EXISTING
- RAISING OF EXISTING WALL / EXTENSION
- N/A
- ▭ VILLAGE BOUNDARY
- ▭ CONSTITUENCY BOUNDARY

17°40'0"N 77°0'0"E

17°40'0"N

# Schools Requiring Kitchen and Dining Hall Chittapur Constituency (2025)

77°6'0"E

17°54'0"N

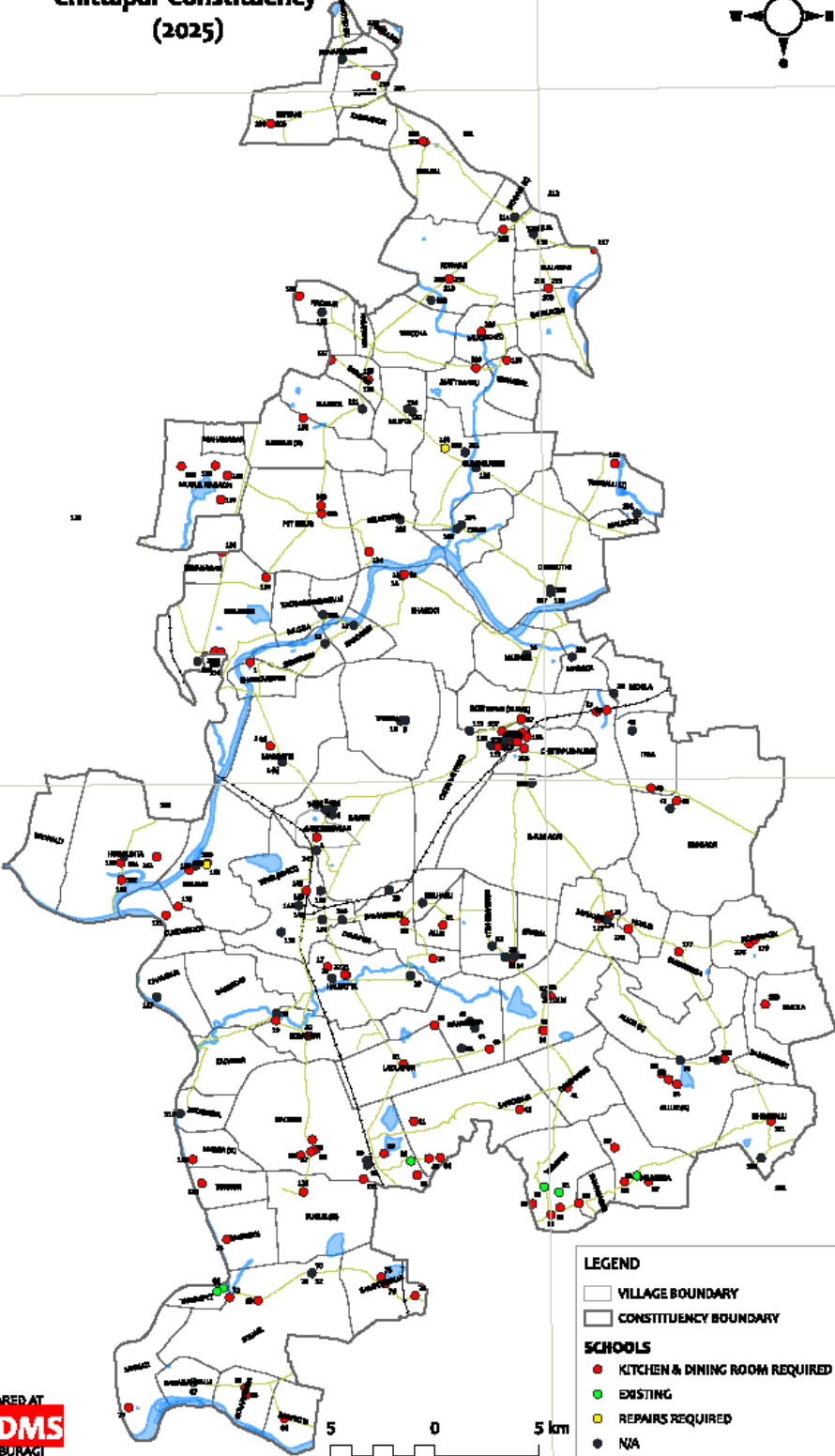
17°56'0"N

18°48'0"N 77°6'0"E



### SCHOOLS REQUIRING DINING HALL/KITCHEN

101	grad type school
102	grad type school
103	grad type school
104	grad type school
105	grad type school
106	grad type school
107	grad type school
108	grad type school
109	grad type school
110	grad type school
111	grad type school
112	grad type school
113	grad type school
114	grad type school
115	grad type school
116	grad type school
117	grad type school
118	grad type school
119	grad type school
120	grad type school
121	grad type school
122	grad type school
123	grad type school
124	grad type school
125	grad type school
126	grad type school
127	grad type school
128	grad type school
129	grad type school
130	grad type school
131	grad type school
132	grad type school
133	grad type school
134	grad type school
135	grad type school
136	grad type school
137	grad type school
138	grad type school
139	grad type school
140	grad type school
141	grad type school
142	grad type school
143	grad type school
144	grad type school
145	grad type school
146	grad type school
147	grad type school
148	grad type school
149	grad type school
150	grad type school
151	grad type school
152	grad type school
153	grad type school
154	grad type school
155	grad type school
156	grad type school
157	grad type school
158	grad type school
159	grad type school
160	grad type school
161	grad type school
162	grad type school
163	grad type school
164	grad type school
165	grad type school
166	grad type school
167	grad type school
168	grad type school
169	grad type school
170	grad type school
171	grad type school
172	grad type school
173	grad type school
174	grad type school
175	grad type school
176	grad type school
177	grad type school
178	grad type school
179	grad type school
180	grad type school
181	grad type school
182	grad type school
183	grad type school
184	grad type school
185	grad type school
186	grad type school
187	grad type school
188	grad type school
189	grad type school
190	grad type school
191	grad type school
192	grad type school
193	grad type school
194	grad type school
195	grad type school
196	grad type school
197	grad type school
198	grad type school
199	grad type school
200	grad type school



**LEGEND**

- VILLAGE BOUNDARY
- CONSTITUENCY BOUNDARY

**SCHOOLS**

- KITCHEN & DINING ROOM REQUIRED
- EXISTING
- REPAIRS REQUIRED
- N/A

PREPARED AT  
**NRDMS**  
KALABURAGI

Scale Source: 1:50000

17°54'0"N

17°56'0"N

18°48'0"N

### Schools Requiring Toilet Rooms Chittapur Constituency (2025)



17°45'0"N

77°6'0"E

17°45'0"N

17°45'0"N

17°45'0"N



**SCHOOLS REQUIRING TOILET ROOMS**

Sl no	School Name	Toilet Rooms
1	gpr.sps.mahalinga	0
2	gpr.sps.mahalinga	0
3	gpr.sps.mahalinga	0
4	gpr.sps.mahalinga	0
5	gpr.sps.mahalinga	0
6	gpr.sps.mahalinga	0
7	gpr.sps.mahalinga	0
8	gpr.sps.mahalinga	0
9	gpr.sps.mahalinga	0
10	gpr.sps.mahalinga	0
11	gpr.sps.mahalinga	0
12	gpr.sps.mahalinga	0
13	gpr.sps.mahalinga	0
14	gpr.sps.mahalinga	0
15	gpr.sps.mahalinga	0
16	gpr.sps.mahalinga	0
17	gpr.sps.mahalinga	0
18	gpr.sps.mahalinga	0
19	gpr.sps.mahalinga	0
20	gpr.sps.mahalinga	0
21	gpr.sps.mahalinga	0
22	gpr.sps.mahalinga	0
23	gpr.sps.mahalinga	0
24	gpr.sps.mahalinga	0
25	gpr.sps.mahalinga	0
26	gpr.sps.mahalinga	0
27	gpr.sps.mahalinga	0
28	gpr.sps.mahalinga	0
29	gpr.sps.mahalinga	0
30	gpr.sps.mahalinga	0
31	gpr.sps.mahalinga	0
32	gpr.sps.mahalinga	0
33	gpr.sps.mahalinga	0
34	gpr.sps.mahalinga	0
35	gpr.sps.mahalinga	0
36	gpr.sps.mahalinga	0
37	gpr.sps.mahalinga	0
38	gpr.sps.mahalinga	0
39	gpr.sps.mahalinga	0
40	gpr.sps.mahalinga	0
41	gpr.sps.mahalinga	0
42	gpr.sps.mahalinga	0
43	gpr.sps.mahalinga	0
44	gpr.sps.mahalinga	0
45	gpr.sps.mahalinga	0
46	gpr.sps.mahalinga	0
47	gpr.sps.mahalinga	0
48	gpr.sps.mahalinga	0
49	gpr.sps.mahalinga	0
50	gpr.sps.mahalinga	0
51	gpr.sps.mahalinga	0
52	gpr.sps.mahalinga	0
53	gpr.sps.mahalinga	0
54	gpr.sps.mahalinga	0
55	gpr.sps.mahalinga	0
56	gpr.sps.mahalinga	0
57	gpr.sps.mahalinga	0
58	gpr.sps.mahalinga	0
59	gpr.sps.mahalinga	0
60	gpr.sps.mahalinga	0
61	gpr.sps.mahalinga	0
62	gpr.sps.mahalinga	0
63	gpr.sps.mahalinga	0
64	gpr.sps.mahalinga	0
65	gpr.sps.mahalinga	0
66	gpr.sps.mahalinga	0
67	gpr.sps.mahalinga	0
68	gpr.sps.mahalinga	0
69	gpr.sps.mahalinga	0
70	gpr.sps.mahalinga	0
71	gpr.sps.mahalinga	0
72	gpr.sps.mahalinga	0
73	gpr.sps.mahalinga	0
74	gpr.sps.mahalinga	0
75	gpr.sps.mahalinga	0
76	gpr.sps.mahalinga	0
77	gpr.sps.mahalinga	0
78	gpr.sps.mahalinga	0
79	gpr.sps.mahalinga	0
80	gpr.sps.mahalinga	0
81	gpr.sps.mahalinga	0
82	gpr.sps.mahalinga	0
83	gpr.sps.mahalinga	0
84	gpr.sps.mahalinga	0
85	gpr.sps.mahalinga	0
86	gpr.sps.mahalinga	0
87	gpr.sps.mahalinga	0
88	gpr.sps.mahalinga	0
89	gpr.sps.mahalinga	0
90	gpr.sps.mahalinga	0
91	gpr.sps.mahalinga	0
92	gpr.sps.mahalinga	0
93	gpr.sps.mahalinga	0
94	gpr.sps.mahalinga	0
95	gpr.sps.mahalinga	0
96	gpr.sps.mahalinga	0
97	gpr.sps.mahalinga	0
98	gpr.sps.mahalinga	0
99	gpr.sps.mahalinga	0
100	gpr.sps.mahalinga	0

PREPARED AT  
**NRDMS**  
KALABURAGI

5 0 5 km

Data Source: PHEC, Dabhalgi

**LEGEND**

- VILLAGE BOUNDARY
- CONSTITUENCY BOUNDARY
- SCHOOLS (Toilet Rooms)**
- - (N/A)
- Repair Required
- Not required
- Required

77°6'0"E

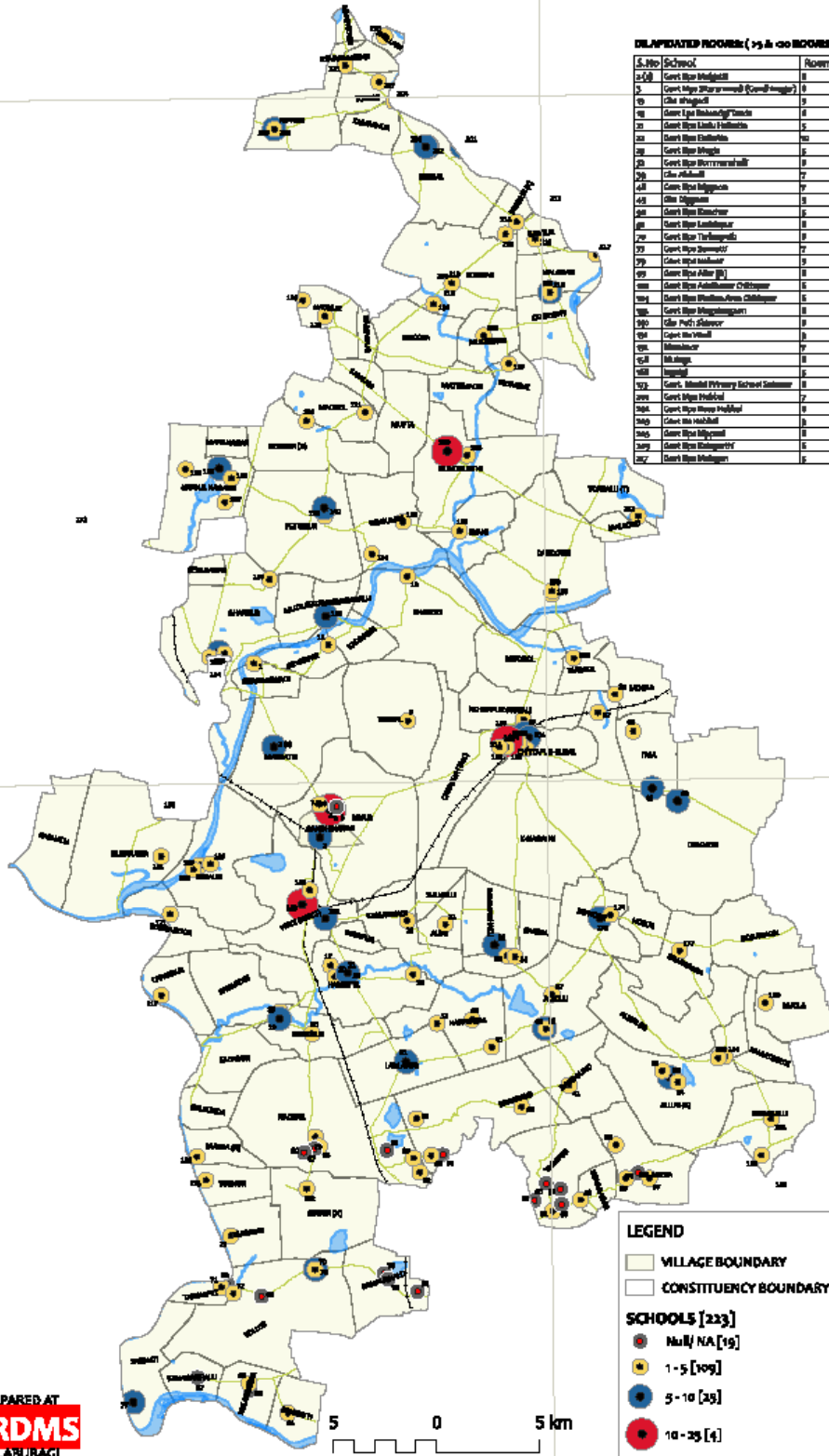
# Schools with Number of Dilapidated Rooms Chittapur Constituency (2025)

77°6'0"E

17°24'0"N

17°25'0"N

16°48'0"N



### DILAPIDATED ROOMS (25 & 40 ROOMS)

S.No	School	Rooms
25A	Govt High School	40
25B	Govt High School (Kandh Nagar)	40
25C	Govt High School	40
25D	Govt High School	40
25E	Govt High School	40
25F	Govt High School	40
25G	Govt High School	40
25H	Govt High School	40
25I	Govt High School	40
25J	Govt High School	40
25K	Govt High School	40
25L	Govt High School	40
25M	Govt High School	40
25N	Govt High School	40
25O	Govt High School	40
25P	Govt High School	40
25Q	Govt High School	40
25R	Govt High School	40
25S	Govt High School	40
25T	Govt High School	40
25U	Govt High School	40
25V	Govt High School	40
25W	Govt High School	40
25X	Govt High School	40
25Y	Govt High School	40
25Z	Govt High School	40

### DILAPIDATED ROOMS MORE THAN 40

S.No	School	Rooms
41	Govt High School	41
42	Govt High School	42
43	Govt High School	43
44	Govt High School	44
45	Govt High School	45

### DILAPIDATED ROOMS LESS THAN 5

S.No	School Name	Rooms
1	Govt High School	1
2	Govt High School	2
3	Govt High School	3
4	Govt High School	4
5	Govt High School	5
6	Govt High School	6
7	Govt High School	7
8	Govt High School	8
9	Govt High School	9
10	Govt High School	10
11	Govt High School	11
12	Govt High School	12
13	Govt High School	13
14	Govt High School	14
15	Govt High School	15
16	Govt High School	16
17	Govt High School	17
18	Govt High School	18
19	Govt High School	19
20	Govt High School	20
21	Govt High School	21
22	Govt High School	22
23	Govt High School	23
24	Govt High School	24
25	Govt High School	25
26	Govt High School	26
27	Govt High School	27
28	Govt High School	28
29	Govt High School	29
30	Govt High School	30
31	Govt High School	31
32	Govt High School	32
33	Govt High School	33
34	Govt High School	34
35	Govt High School	35
36	Govt High School	36
37	Govt High School	37
38	Govt High School	38
39	Govt High School	39
40	Govt High School	40
41	Govt High School	41
42	Govt High School	42
43	Govt High School	43
44	Govt High School	44
45	Govt High School	45
46	Govt High School	46
47	Govt High School	47
48	Govt High School	48
49	Govt High School	49
50	Govt High School	50
51	Govt High School	51
52	Govt High School	52
53	Govt High School	53
54	Govt High School	54
55	Govt High School	55
56	Govt High School	56
57	Govt High School	57
58	Govt High School	58
59	Govt High School	59
60	Govt High School	60
61	Govt High School	61
62	Govt High School	62
63	Govt High School	63
64	Govt High School	64
65	Govt High School	65
66	Govt High School	66
67	Govt High School	67
68	Govt High School	68
69	Govt High School	69
70	Govt High School	70
71	Govt High School	71
72	Govt High School	72
73	Govt High School	73
74	Govt High School	74
75	Govt High School	75
76	Govt High School	76
77	Govt High School	77
78	Govt High School	78
79	Govt High School	79
80	Govt High School	80
81	Govt High School	81
82	Govt High School	82
83	Govt High School	83
84	Govt High School	84
85	Govt High School	85
86	Govt High School	86
87	Govt High School	87
88	Govt High School	88
89	Govt High School	89
90	Govt High School	90
91	Govt High School	91
92	Govt High School	92
93	Govt High School	93
94	Govt High School	94
95	Govt High School	95
96	Govt High School	96
97	Govt High School	97
98	Govt High School	98
99	Govt High School	99
100	Govt High School	100

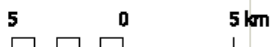
**LEGEND**

- VILLAGE BOUNDARY
- CONSTITUENCY BOUNDARY

**SCHOOLS [233]**

- NA [19]
- 1-5 [109]
- 5-10 [29]
- 10-25 [4]

PREPARED AT  
**NRDMS**  
KALABURGI



77°6'0"E

17°24'0"N

17°25'0"N

16°48'0"N

Date: 2025-01-15

**ACTIVITY 2 : Relocation Maps for Flood-Prone Habitations along Bheema and Kagina Rivers, Kalaburagi District.**

<b>Title of work</b>	<b>Relocation Maps for Flood-Prone Habitations along Bheema and Kagina Rivers, Kalaburagi District</b>
<b>Department Name</b>	Disaster management cell district administration office kalaburagi.
<b>Objectives</b>	<ul style="list-style-type: none"> <li>• To identify flood-prone habitations along Bheema and Kagina rivers.</li> <li>• To map existing settlement locations using GIS tools.</li> <li>• To identify safe and suitable alternative sites for relocation.</li> <li>• To assist the Disaster Management Cell in planning rehabilitation measures.</li> <li>• To minimize future flood risk and enhance community resilience.</li> </ul>
<b>Methodology</b>	<ul style="list-style-type: none"> <li>• Collection of spatial data including river networks, village boundaries, habitation locations, and administrative boundaries.</li> <li>• Use of satellite imagery and GIS software for mapping vulnerable areas.</li> <li>• Analysis of flood-prone zones based on proximity to riverbanks, historical flood extent, and low-lying terrain.</li> <li>• Identification of comparatively higher elevation and safer land parcels for relocation.</li> <li>• Preparation of thematic maps showing: <ul style="list-style-type: none"> <li>○ Existing flood-affected habitations</li> <li>○ Proposed relocation sites</li> <li>○ River course and buffer zones</li> </ul> </li> </ul>
<b>USAGE OF MAPS:</b>	<ul style="list-style-type: none"> <li>• Submitted to the Disaster Management Cell, Deputy Commissioner's Office, Kalaburagi for planning and decision-making.</li> <li>• Used for identifying priority villages for relocation.</li> <li>• Supports preparation of rehabilitation proposals and funding approvals.</li> <li>• Assists in inter-departmental coordination (Revenue, RDPR, PWD, etc.).</li> <li>• Serves as a reference for future flood mitigation and district disaster preparedness planning.</li> </ul>
<b>Type of Data Provided</b>	PDF & JPEG File.



**Villages Proposed for Relocation – Bhima & Kagina Rivers, Kalaburagi District**

Sl. No	Taluka Name	Hobli Name	Village Name	Total Houses	Required Estimated Land	Remark
1	Chittapur	Nalwar	Kadabur	310	20-00	-
2	Kalaburagi	Fartabad	Firozabad	-	-	-
3	Kalaburagi	Fartabad	Nadi Sannur	24	1-25	Partially
4	Kalagi	Kalagi	Kansur	280	8-00	-
5	Kalagi	Old Hebbal	Old Hebbal	229	7-00	Partially
6	Shahabad	Shahabad	Muttaga	140	6-00	-
7	Shahabad	Shahabad	Honagunta	150	5-00	-
8	Shahabad	Shahabad	Bhimnagar	324	17-00	Partially
9	Afzalpur	Karajagi	Seshagiri	40	2-00	Partially
10	Afzalpur	Karajagi	Mannur	620	31-00	Partially
11	Afzalpur	Karajagi	Shivur	680	34-00	-
12	Afzalpur	Karajagi	Udachana	500	25-00	Partially
13	Afzalpur	Karajagi	Bhosaga	650	32-20	-
14	Afzalpur	Karajagi	Bhankalaga	66	3-20	Partially
15	Afzalpur	Karajagi	Jevargi-K	350	17-20	-
16	Afzalpur	Afzalpur	Bannatti	80	4-00	-
17	Afzalpur	Afzalpur	Hinchagera	73	4-00	Partially
18	Afzalpur	Afzalpur	Desai Kallur	250	12-20	Partially
19	Afzalpur	Afzalpur	Tellur	140	7-00	Partially
20	Afzalpur	Karajagi	Sonna	144	7-00	-
21	Afzalpur	Afzalpur	Kolanur	180	9-00	-
22	Afzalpur	Afzalpur	Havalaga	85	4-00	Partially
23	Afzalpur	Afzalpur	Kerakanahalli	63	3-00	Partially
24	Afzalpur	Afzalpur	Guddevadi	70	3-20	Partially
25	Afzalpur	Karajagi	Shirwala	60	3-00	Partially
26	Jewargi	Jewargi	Harwal	140	7-00	Partially
27	Jewargi	Jewargi	Kudi	30	1-25	Partially
28	Jewargi	Jewargi	Raddevadagi	35	1-30	Partially
29	Jewargi	Jewargi	Kobala	20	1-00	Partially
30	Jewargi	Jewargi	Konahipparaga	8	1-00	Partially
31	Jewargi	Jewargi	Mandravada	56	3-10	Partially
32	Jewargi	Jewargi	Rasanagi	10	1-00	Partially
33	Jewargi	Jewargi	Handanur	63	5-00	Partially
34	Andola	Andola	Madari	15	1-00	Partially

Sl. No	Taluka Name	Hobli Name	Village Name	Total Houses	Required Estimated Land	Remark
35	Andola	Andola	Yanagunti	25	2-00	Partially
36	Andola	Andola	Naribol	200	11-00	Partially
37	Andola	Andola	Rajawal	35	3-00	Partially
38	Andola	Andola	Malla B	126	6-21	Partially
39	Andola	Andola	Malla K	260	14-00	Partially
40	Andola	Andola	Honnal	280	16-00	Partially
41	Andola	Andola	Hottinamadu	155	8-00	Partially
42	Andola	Andola	Rampur	34	2-00	Partially
43	Nelogi	Nelogi	Mahur	120	6-30	Partially
44	Nelogi	Nelogi	Ballundagi	150	8-21	Partially

### ACTIVITY 3 : GIS Mapping of Liquor Shop Locations and License Classification in Chittapur, Kalagi, and Shahabad Taluks

<b>Title of work</b>	GIS Mapping of Liquor Shop Locations and License Classification in Chittapur, Kalagi, and Shahabad Taluks
<b>Department Name</b>	EXCISE
<b>Objectives</b>	<ul style="list-style-type: none"> <li>• To classify liquor shops under CL-02, CL-07, CL-09, and CL-11C (MSIL/MRP) categories.</li> <li>• To support the Excise Department in monitoring compliance with licensing norms.</li> <li>• To provide spatial evidence for planning, regulation, and policy decisions.</li> </ul>
<b>Methodology</b>	GIS techniques were used to collect and plot shop coordinates. Each outlet was categorized by license type and visualized on taluk-level maps. Layers were created to distinguish license categories, and standardized symbology was applied for clarity. The maps were then compiled and submitted to the Excise Department, Kalaburagi.
<b>Usage Of maps</b>	Mapping liquor shop locations is essential for regulatory oversight and public welfare. It provides a clear spatial picture of shop distribution across Chittapur, Kalagi, and Shahabad taluks, ensuring transparency in licensing and helping identify areas of saturation or sensitive proximity.
<b>Type of Data Provided</b>	PDF & JPEG File.

76°48'0"E

77°0'0"E

77°12'0"E

**ಕಲಬುರಗಿ ಜಿಲ್ಲೆಯ ಚಿತ್ರಾಪುರ ತಾಲೂಕು(ಹಳೆ) ಮದ್ಯದ ಅಂಗಡಿಗಳನ್ನು  
(Liquor Shops) ತೋರಿಸುವ ನಕ್ಷೆ**



SL NO	NAME OF THE SHOP & ADDRESS	TYPE/ADDRESS
1	...	...
2	...	...
3	...	...
4	...	...
5	...	...
6	...	...
7	...	...
8	...	...
9	...	...
10	...	...
11	...	...
12	...	...
13	...	...
14	...	...
15	...	...
16	...	...
17	...	...
18	...	...
19	...	...
20	...	...
21	...	...
22	...	...
23	...	...
24	...	...
25	...	...
26	...	...
27	...	...
28	...	...
29	...	...
30	...	...
31	...	...
32	...	...
33	...	...
34	...	...
35	...	...
36	...	...
37	...	...
38	...	...
39	...	...
40	...	...
41	...	...
42	...	...
43	...	...
44	...	...
45	...	...
46	...	...
47	...	...
48	...	...
49	...	...
50	...	...

17°24'0"N  
17°12'0"N  
17°0'0"N  
16°48'0"N

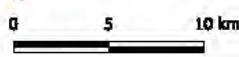
17°24'0"N  
17°12'0"N  
17°0'0"N  
16°48'0"N



**ಸೂಚನೆ**

ಪಾಲಿಟಿಕ್ಸ್ ಕೇಂದ್ರ	ರೈಲ್ವೆ ಲೈನ್
ಗ್ರಾಮ ಪಂಚಾಯತ್ ಕೇಂದ್ರ	ರಾಷ್ಟ್ರೀಯ ಹೆದ್ದಾರಿ
ಜಿಲ್ಲೆಯ ಗಡಿ	ರಾಜ್ಯ ಹೆದ್ದಾರಿ
ತಾಲೂಕು ಗಡಿ	<b>ಮದ್ಯದ ಅಂಗಡಿ</b>
ಗ್ರಾಮ ಪಂಚಾಯತ್ ಗಡಿ	CL-02
ಜಲಮಾಲಿನ್ಯಗಳು	CL-07
ಗ್ರಾಮದ ಗಡಿ	CL-09
ಪ್ರಮುಖ ಸೀಮಾ ರಸ್ತೆಗಳು	CL-11C
ಗ್ರಾಮದ ರಸ್ತೆಗಳು	

**NRDMS**  
National River Conservation Directorate  
ಜಿಲ್ಲಾ ನೀರ್ ಆರ.ಡಿ.ಎಂ.ಎಸ್ ಕೇಂದ್ರ  
ಜಿಲ್ಲಾ ಪಂಚಾಯತ್ ಕಲಬುರಗಿ



76°48'0"E

77°0'0"E

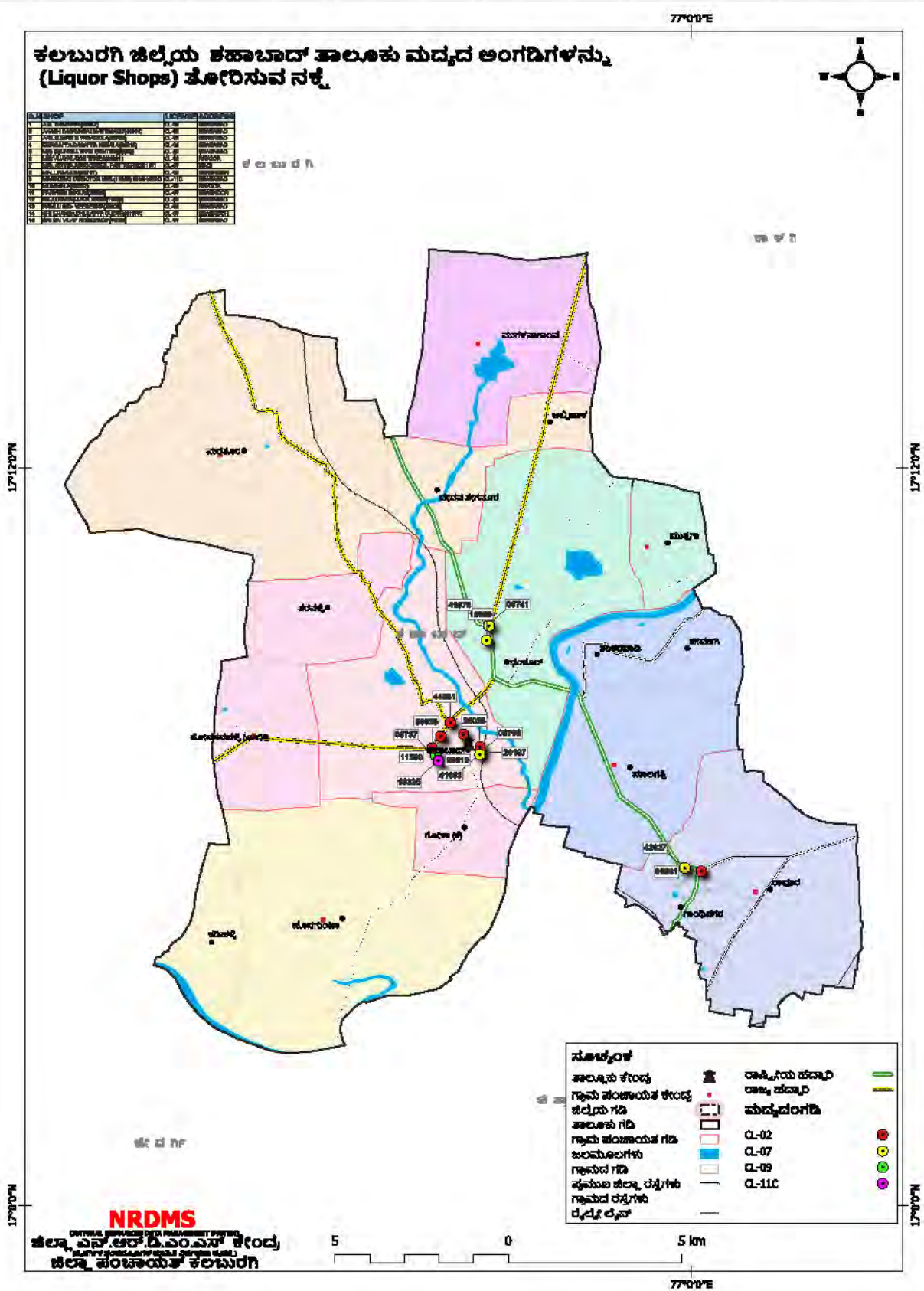
77°12'0"E



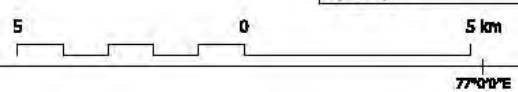


**ಕಲಬುರಗಿ ಜಿಲ್ಲೆಯ ಪಹಾಬಾದ್ ತಾಲೂಕು ಮದ್ಯದ ಅಂಗಡಿಗಳನ್ನು  
(Liquor Shops) ತೋರಿಸುವ ನಕ್ಷೆ**

ಕ್ರ.ಸಂಖ್ಯೆ	ಲಿಕ್ವರ್ ಶಾಪ್ ವಿವರ	ಲಿಕ್ವರ್ ಸಂಖ್ಯೆ
1	...	...
2	...	...
3	...	...
4	...	...
5	...	...
6	...	...
7	...	...
8	...	...
9	...	...
10	...	...
11	...	...
12	...	...
13	...	...
14	...	...
15	...	...
16	...	...
17	...	...
18	...	...
19	...	...
20	...	...
21	...	...
22	...	...
23	...	...
24	...	...
25	...	...
26	...	...
27	...	...
28	...	...
29	...	...
30	...	...
31	...	...
32	...	...
33	...	...
34	...	...
35	...	...
36	...	...
37	...	...
38	...	...
39	...	...
40	...	...
41	...	...
42	...	...
43	...	...
44	...	...
45	...	...
46	...	...
47	...	...
48	...	...
49	...	...
50	...	...



**NRDMS**  
 NATIONAL ROAD DEVELOPMENT MANAGEMENT SYSTEM  
 ಜಿಲ್ಲಾ ಎನ್.ಆರ್.ಡಿ.ಎಂ.ಎಸ್ ಕೇಂದ್ರ  
 ಜಿಲ್ಲಾ ಪಂಚಾಯತ್ ಕಲಬುರಗಿ



4. Training Programmes Attended:

Attended earthquake mitigation workshop at ATI Mysore.

5. Training Imparted to Line Department:

No Training Activities imparted to Line department during this period.

6. Science Outreach Activities:

No Science Outreach Activities were conducted during this period.

**THANK YOU**