

# ***NATURAL RESOURCES DATA MANAGEMENT SYSTEM (NRDMS)***

**MONTHLY ACTIVITY REPORT  
August – November 2025**

**Submitted by  
District NRDMS Centre  
Zilla Panchayat, Chikkaballapura**



**Submitted to  
Karnataka State Council for  
Science and Technology (KSCST)  
Indian Institute of Science Campus,  
Bengaluru – 560012**

## TABLE OF CONTENTS

Sl No	Particulars	Page Number
1	NRDMS Centre Activities (August to November-2025)	03-33
2	Training Programmes Attended	34
3	Training Programmes Imparted to Line Department	34
4	Science Outreach Activities	34
5	Conclusion	34
6	Annexure	35

## **1. Major Activities Carried Out during the period of August-November-2025:**

### **Uses of GIS for Tribal Welfare Department, Zilla Panchayath**

**Objectives:** Deputy Director, Scheduled Castes Welfare Department, as per the purpose of the meeting held here, the purpose is to construct Pre-Matric and Post-Matric hostels, Morarji Desai School and Kittur Rani Chennamma Residential. The GPS points information of the hostels is available and their locations are to be mapped using GIS technology through NRDMS.

#### **Statistics Requirement:**

1. Need for latitude and longitude information.
2. Need for Information required for pre-metric and post-metric hostels, Morarji Desai and Kittur Rani Chennamma Residential

#### **Map Uses:**

1. Since there is a shortage of Morarji Desai Residential School and Kittur Rani Chennamma Residential School for the repair and construction of hostels in some taluks of the district, it will be helpful for the officials to know the information through maps to indicate the locations of schools in some taluks.
2. It will be helpful to identify hostels through maps.
3. It is helpful to identify schools through maps. Therefore, GIS maps are used.

**Map provided by Jpg and Pdf format.**

**Table:1**

<b>Taluk</b>	<b>Location of the Hostel</b>	<b>Matric_Type</b>	<b>Strengt h</b>	<b>Admitt ed_Stre ngth</b>	<b>Village_Na me</b>	<b>constit uency_ Name</b>	<b>Pin_cod e</b>	<b>LON G</b>	<b>LAT</b>
Gudibande	Pre Matric Boys Hostel,Gudibande	Pre Matric	50	50	Gudibanda Town	Bagepal li	561209	77.70 51	13.66 90
Chikkaballapura	Post Matric Boys Hostel, Chikkaballapura	Post Matric	50	125	Chikkaballa pura	Chikkab allapura	562101	77.72 98	13.43 51
Chikkaballapura	Post Matric Girls Hostel, Chikkaballapura	Post Matric	100	81	Chikkaballa pura	Chikkab allapura	562101	77.728 5	13.433 3
Bagepalli	Post Matric Boys Hostel, Bagepalli	Post Matric	50	258	Bagepalli	Bagepal li	561207	77.79 91	13.77 92
Gouribidanuru	Post Matric Girls Hostel, Gouribidanuru	Post Matric	100	28	V V Puram Gauribidanur Town	Gowribi danur	561208	77.510 3	13.608 7
Gouribidanuru	Post Matric Boys Hostel, Gouribidanuru	Post Matric	50	69	Madanahalli	Gowribi danur	561208	77.516 1	13.586 7
Chintamani	Post Matric Boys Hostel, Chintamani	Post Matric	100	211	chinthaman i town	chintha mani	563125	78.056 0	13.398 1
Shidlaghatta	Morarji Residential school,	Pre Matric co-education	250	248	Ganjigunte	Shidlag hatta	562105	77.98 02	13.49 58

	Shidlaghatta								
Shidlaghatta	Indiragandhi Residential school, Shidlaghatta	Pre Matricco-education	150	150	Sundrahalli	Shidlaghatta	562105	77.8611	13.2451
Chintamani	Morarji Residential school, Chintamani	Pre Matric co-education	150	150	Murugamall a	chintha mani town	563125	78.0566	13.3983
Gouribidanuru	Kitturu Rani Channamma Girls Residential school	Pre Matric	250	239	Manivala	Gouribidanuru	561208	77.6107	13.7003
Gouribidanuru	Dr.B.R.Ambedkar Girls Residential school	Pre Matric	150	115	Nagaragere Hobali	Gouribidanuru	561208	77.6366	13.7592
Gouribidanuru	Kitturu Rani Channamma Girls Residential school	Pre Matric	150	124	Thondebhavi	Gouribidanuru	561208	77.5301	13.4919
Chikkballapura	Dr.B.R.Ambedkar Residential school, Chikkballapura	Pre Matric co-education	150	130	Mandikal	Chikkballapura	562101	77.7298	13.5976
Bagepalli	Nallaguttapalli	Ashrama school	125	33	Nallaguttapalli	Bagepalli	561207	78.043137	13.830017

Chinthamani	Kanganahalli	Ashrama school	125	85	kanaganah lli	chinth mani	563125	78.025 19868	13.349 82852
Shidlaghatta	Bachanahalli	Ashrama school	125	125	BACHANAH ALLI	SHIDLA GATTA	562105	77.907 225	13.564 282



## **Uses of GIS for Social Welfare Department**

### **Zilla Panchayath**

**Objectives:** The purpose of the meeting held here by the District Social Welfare Officers and the Social Welfare Department is to indicate the locations of the hostels for pre-matric boys and girls and post-matric boys and girls. The GPS points information of the residences is available and the purpose is to map the locations of the residential schools using GIS technology through NRDMS.

#### **Statistics Requirement:**

- 1) Need for latitude and longitude information.
- 2) Information requirement for pre-metric and post-metric boys and girls hostel schools.

#### **Map Uses:**

- 1. It will help the officials to know the information through maps to indicate the locations of the pre-metric and post-metric boys and girls hostel schools in the district.
- 2. It will help to identify the hostels through maps.
- Map provided by Jpg and Pdf format.



# SOCIAL WELFARE DEPARTMENT CHIKKABALLAPUR DISTRICT

The map displays the Chikkaballapur District, divided into seven taluqs: Gouribidnuru, Manchenahalli, Chikkaballapur, Gudibande, Bagepalli, Sidlaghatta, and Chintamani. It also shows the surrounding districts: Tumkur, Bangalore Rural, Kolar, and Andhra Pradesh. The map includes a legend for district boundaries, NH roads, SH roads, railway lines, major district roads, and the locations of pre-metric and post-metric hostels. A scale bar indicates distances up to 30 kilometers, and a compass rose shows the cardinal directions.

**LEGEND**

- District Boundary
- NH Road
- SH Road
- Railwayline
- Major District Road
- Location of pre metric & post metric Hostels

**MAP PREPARED@ NRMS CENTRE 2P,CHIKKABALLAPUR DISTRICT**  
**SOURCE: DEPARTMENT OF SOCIAL WELFARE,CHIKKABALLAPUR DISTRICT**

Table: 2

SL_NO	HOSTEL_CODE	TALUK_NAME	HOSTELNAME _ADDRESS	HOSTELNAME _ADDRESS	VIL_NAME	YEAROF_ESTA BLISHMENT	BUILDIN G_TYPE	LAT	LONG
1	W290307	Gowribidanur	PRE-MATRIC BOYS HOSTEL MELYA	pre-matric boys hostel melya	MELYA	1997	Own	13.716	77.544
2	W290303	Gowribidanur	PRE-MATRIC BOYS HOSTEL NAGARAGERE	pre-matric boys hostel nagaragere	NAGARAGERE	1979-80	Own	13.758	77.636
3	W290304	Gowribidanur	PRE-MATRIC BOYS HOSTEL VATADHOSAHALLI	pre-matric boys hostel vatadhosahalli	VATADHOSAHALL I	2001	Own	13.710	77.605
4	W290305	Gowribidanur	PRE-MATRIC BOYS HOSTEL VIDURASHWATHA	pre-matric boys hostel vidurashwatha	VIDHURASHWAT HA	2001	Own	13.671	77.504
5	W290306	Gowribidanur	PRE-MATRIC BOYS HOSTEL MANCHENAHALLI	pre-matric boys hostel manchenahalli	MANCHENAHALLI	2000	Own	13.529	77.442
6	W290308	Gowribidanur	PRE-MATRIC BOYS HOSTEL HOSSUR	pre-matric boys hostel hossur	HOSSUR	1995-96	Own	13.580	77.442
7	W290301	Gowribidanur	PRE-MATRIC BOYS HOSTEL GOWRIBIDANUR TOWN	pre-matric boys hostel gowribidanur town	GOWRIBIDANUR TOWN	1975-76	Own	13.599	77.512
8	W2903010	Gowribidanur	POST-MATRIC BOYS HOSTEL GOWRIBIDANUR TOWN	post-matric boys hostel gowribidanur town	GOWRIBIDANUR TOWN	1981-82	Own	13.605	77.514
9	W290311	Gowribidanur	POST-MATRIC GIRLSHOSTEL GOWRIBIDANUR TOWN	post-matric girlshostel gowribidanur town	GOWRIBIDANUR TOWN	2005	Own	13.604	77.510
10	W290302	Gowribidanur	PRE-MATRIC GIRLS HOSTEL GOWRIBIDANUR TOWN	pre-matric girls hostel gowribidanur town	GOWRIBIDANUR TOWN	1968	Own	13.608	77.515
11	W290309	Gowribidanur	PRE-MATRIC GIRLS HOSTEL HOSSUR	pre-matric girls hostel hossur	HOSSUR	2004	Own	13.586	77.443
12	W290406	Gudibanda	Post-Matric SC Boys Hostel, Gudibanda Town	Post-Matric SC Boys Hostel, Gudibanda Town	GUDIBANDE	1994	Own	13.669	77.705
13	W290407	Gudibanda	Post-Martric Girls Hostel, Gudibanda Town	Post-Martric Girls Hostel, Gudibanda Town	GUDIBANDE	2012	Own	13.672	77.704
14	W290402	Gudibanda	Pre-matric Girls Hostel, Gudibanda Town	Pre-matric Girls Hostel, Gudibanda Town	GUDIBANDE	1983	Own	13.670	77.700
15	W290404	Gudibanda	Pre-matric, Lakshmisagara, Gudibanda Taluk	Pre-matric, Lakshmisagara, Gudibanda Taluk	LAKSHMISAGARA	1999	Own	13.637	77.794
16	W290403	Gudibanda	Pre-matric, Yellodu, Gudibanda Taluk	Pre-matric, Yellodu, Gudibanda Taluk	YELLODU	1972	Own	13.738	77.688
17	W290401	Gudibanda	Pre-matric Boys Hostel, Gudibanda Town	Pre-matric Boys Hostel, Gudibanda Town	GUDIBANDE	1991	Own	13.669	77.702
18	W290208	Bagepalli	Govt Pre-Matric Boys Hostel, Bagepalli Town	Govt Pre-Matric Boys Hostel, Bagepalli Town	BAGEPALLI	1978-79	Own	13.774	77.793

19	W290201	Bagepalli	Govt Pre-Matric Girls Hostel, Bagepalli Town	Govt Pre-Matric Girls Hostel, Bagepalli Town	BAGEPALLI	1997-98	Own	13.783	77.798
20	W290209	Bagepalli	Govt Pre-Matric Girls Hostel, Chakavelu	Govt Pre-Matric Girls Hostel, Chakavelu	CHAKAVELU	1999-2000	Own	13.826	78.099
21	W290202	Bagepalli	Govt Pre-Matric Boys Hostel, chelur	Govt Pre-Matric Boys Hostel, chelur	CHELURU	1997-98	Own	13.708	78.099
22	W290206	Bagepalli	Govt Pre-Matric Boys Hostel, Marganakunte	Govt Pre-Matric Boys Hostel, Marganakunte	MARGANAKUNTE	1996-97	Own	13.891	77.845
23	W290203	Bagepalli	Govt Pre-Matric Boys Hostel, Nallagutlapalli	Govt Pre-Matric Boys Hostel, Nallagutlapalli	NALLAGUTTLAPALLI	1997-98	Own	13.749	78.059
24	W290204	Bagepalli	Govt Pre-Matric Boys Hostel, Palyakere	Govt Pre-Matric Boys Hostel, Palyakere	PALYAKERE	1999-2000	Own	13.690	78.042
25	W290207	Bagepalli	Govt Pre-Matric Boys Hostel, Somanathapura	Govt Pre-Matric Boys Hostel, Somanathapura	SOMANATHAPURA	2007-08	Own	13.758	78.010
26	W290205	Bagepalli	Govt Pre-Matric Boys Hostel, Thimmampalli	Govt Pre-Matric Boys Hostel, Thimmampalli	THIMMAMPALLI	1996-97	Own	13.855	77.917
27	W290211	Bagepalli	Govt Post Matric PU Boys Hostel, Bagepalli Town	Govt Post Matric PU Boys Hostel, Bagepalli Town	BAGEPALLI	2000-01	Own	13.787	77.789
28	W290213	Bagepalli	Govt Post Matric Girls Hostel, Bagepalli Town	Govt Post Matric Girls Hostel, Bagepalli Town	BAGEPALLI	2007-08	Own	13.777	77.788
29	W290210	Bagepalli	Govt Post Matric Digree Hostel, Bagepalli Town	Govt Post Matric Digree Hostel, Bagepalli Town	BAGEPALLI	1983-84	Own	13.780	77.801
30	W290501	SHIDLAGATTA	GBH Shidlagatta Town, Near Water Tank	GBH Shidlagatta Town, Near Water Tank	SHIDLAGATTA	1982	OWN	13.393	77.868
31	W290502	SHIDLAGATTA	GGH Shidlagatta Town, Near Sarasvathi Convent	GGH Shidlagatta Town, Near Sarasvathi Convent	SHIDLAGATTA	1982	OWN	13.395	77.865
32	W290503	SHIDLAGATTA	GBH Jangamakote Sugturu Road	GBH Jangamakote Sugturu Road	JANGAMAKOTE	1992	OWN	13.263	77.853
33	W290508	SHIDLAGATTA	GBH Cheemanagala, Near KEB	GBH Cheemanagala, Near KEB	CHEEMANGALA	1998	OWN	13.306	77.918
34	W290506	SHIDLAGATTA	GBH Sadali, Near Govt GHS	GBH Sadali, Near Govt GHS	SADALI	1998	OWN	13.623	77.869
35	W290507	SHIDLAGATTA	GBH E Thimmasandara, Near Govt GHS	GBH E Thimmasandara, Near Govt GHS	THIMMASANDARA	1996	OWN	13.621	77.950
36	W290509	SHIDLAGATTA	GBH Basettahalli, Dibburahalli Main Road	GBH Basettahalli, Dibburahalli Main Road	DIBBURAHALLI	2006	OWN	13.556	77.907
37	W290504	SHIDLAGATTA	GBH Ganjigunte, Near Govt GHS	GBH Ganjigunte, Near Govt GHS	GANJIGUNTE	1998	OWN	13.492	77.983
38	W290505	SHIDLAGATTA	GGH Ganjigunte, Opposite GBH Ganjigunte	GGH Ganjigunte, Opposite GBH Ganjigunte	GANJIGUNTE	1999	OWN	13.491	77.981

39	W2905110	SHIDLAGATTA	Post Metric Boys Hostel Hanumanthapura,Dibburahalli Main Road	Post Metric Boys Hostel Hanumanthapura,Dibburahalli Main Road	HANUMANTHAP URA	1992	OWN	13.409	77.857
40	W290107	CHICKABALLAPURA	POST METRIC BOYS HOSTEL PERESANDRA	post metric boys hostel peresandra	PERESANDRA	2000	OWN	13.586	77.792
41	W290106	CHICKABALLAPURA	POST METRIC DEGREE BOYS HOSTEL CHICKABALLAPURA	post metric degree boys hostel chickaballapura	CHICKABALLAPUR A	1973	OWN	13.442	77.726
42	W290110	CHICKABALLAPURA	POST METRIC PUC GIRLS HOSTEL CHICKABALLAPURA	post metric puc girls hostel chickaballapura	CHICKABALLAPUR A	2004	OWN	13.431	77.724
43	W290111	CHICKABALLAPURA	POST METRIC PROFFESTIONAL BOYS HOSTEL CHICKABALLAPURA	post metric proffestional boys hostel chickaballapura	CHICKABALLAPUR A	2005	RENT	13.430	77.738
44	W290108	CHICKABALLAPURA	POST METRIC PROFFESTIONAL GIRLS HOSTEL CHICKABALLAPURA	post metric proffestional girls hostel chickaballapura	CHICKABALLAPUR A	2005	OWN	13.424	77.731
45	W290109	CHICKABALLAPURA	POST METRIC PU BOYS HOSTEL JADALATHIMMANAHALLI	post metric pu boys hostel jadalathimmanahalli	JADALATHIMMA NAHALLI	2005	OWN	13.406	77.723
46	W290109	CHICKABALLAPURA	POST METRIC NEW BOYS HOSTEL CHICKABALLAPURA	post metric new boys hostel chickaballapura	CHICKABALLAPUR A	2018	OWN	13.428	77.724
47	W290101	CHICKABALLAPURA	PRE METRIC BOYS HOSTEL CHICKABALLAPURA	pre metric boys hostel chickaballapura	CHICKABALLAPUR A	1986	OWN	13.425	77.740
48	W290105	CHICKABALLAPURA	PRE METRIC BOYS HOSTEL NANDI	pre metric boys hostel nandi	NANDI	2000	OWN	13.386	77.700
49	W290104	CHICKABALLAPURA	PRE METRIC BOYS HOSTEL POSHETTIHALLI	pre metric boys hostel poshettihalli	POSHETTIHALLI	2000	OWN	13.461	77.617
50	W290102	CHICKABALLAPURA	PRE METRIC GIRLS HOSTEL CHICKABALLAPURA	pre metric girls hostel chickaballapura	CHICKABALLAPUR A	1986	OWN	13.423	77.733
51	W290103	CHICKABALLAPURA	PRE METRIC GIRLS HOSTEL MADIKAL	pre metric girls hostel madikal	MADIKAL	1999	OWN	13.602	77.720
52	W290614	Chinthamani	Post-Matric SC Boys degree Hostel, Chinthamani Town	Post-Matric SC Boys degree Hostel, Chinthamani Town	Chinthamani	1989-90	Own	13.401	78.052
53	W290615	Chinthamani	Post-Matric SC Boys p.u Hostel, Chinthamani Town	Post-Matric SC Boys p.u Hostel, Chinthamani Town	Chinthamani	1991-92	Own	13.401	78.036
54	W290616	Chinthamani	Classified firls hostel, Chinthamani Town	Classified firls hostel, Chinthamani Town	Chinthamani	2005	Own	13.387	78.044
55	W290617	Chinthamani	Post-Matric SC Girls p.u Hostel, Chinthamani Town	Post-Matric SC Girls p.u Hostel, Chinthamani Town	Chinthamani	1998	Own	13.391	78.052
56	W290602	Chinthamani	Pre-metric Boys Hostel,Chinthamani Town	Pre-metric Boys Hostel,Chinthamani Town	Chinthamani	1987	Own	13.397	78.048
57	W290618	Chinthamani	Pre-metric Girls	Pre-metric Girls	Chinthamani	1987	Own	13.398	78.039

			Hostel,Chinthamani Town	Hostel,Chinthamani Town					
58	W290608	Chinthamani	Pre-metric Boys Hostel,Anoor	Pre-metric Boys Hostel,Anoor	ANOOR	1996	Own	13.342	78.113
59	W290620	Chinthamani	Pre-metric Boys Hostel,K.Raguttahalli	Pre-metric Boys Hostel,K.Raguttahalli	RAGUTTAHALLI	1998	Own	13.559	78.126
60	W290611	Chinthamani	Pre-metric Boys Hostel,kaiwara	Pre-metric Boys Hostel,kaiwara	KAIWARA	1996	Own	13.350	77.990
61	W290606	Chinthamani	Pre-metric Boys Hostel,Korlaparthy	Pre-metric Boys Hostel,Korlaparthy	KORLAPARTHY	1998	Own	13.552	77.976
62	W290609	Chinthamani	Pre-metric Boys Hostel,Munganahalli	Pre-metric Boys Hostel,Munganahalli	MUNGANAHALLI	1996	Own	13.362	78.058
63	W290610	Chinthamani	Pre-metric Boys Hostel,Murgamalla	Pre-metric Boys Hostel,Murgamalla	MURUAGAMALLA	1998	Own	13.440	78.147
64	W290604	Chinthamani	Pre-metric Boys Hostel,Iragampalli	Pre-metric Boys Hostel,Iragampalli	IRAGAMPALLI	1986	Own	13.530	78.132
65	W290607	Chinthamani	Pre-metric Boys Hostel,Yagavakote	Pre-metric Boys Hostel,Yagavakote	YAGAVAKOTE	1999	Own	13.491	78.147
66	W290605	Chinthamani	Pre-metric Boys Hostel,kadadhanamari	Pre-metric Boys Hostel,kadadhanamari	KADADALAMARI	1998	Own	13.636	78.127
67	W290603	Chinthamani	Pre-metric Boys Hostel,Doddabommanahalli	Pre-metric Boys Hostel,Doddabommanahalli	DODDABOMMANAHALLI	1998	Own	13.306	78.124
68	W290612	Chinthamani	Pre-metric Boys Hostel,SantheKallahalli	Pre-metric Boys Hostel,SantheKallahalli	SANTHEKALLAHALLI	1999	Own	13.283	77.941

## **Uses of GIS for Chikkaballapur District Co-operative Milk Producers Union Ltd. (CHIMUL)**

**Objectives:** In the wake of the formation of the newly formed Chikkaballapur District Cooperative Milk Producers' Union Corporation in Chikkaballapur district, the purpose of preparing maps divided by taluk and panchayat constituency is to provide information on the elections for the formation of the Chikkaballapur District Cooperative Milk Producers' Unions.

**Statistics Requirement:**

- 1) Taluk-wise and village-wise data collection
- 2) Need for latitude and longitude information.

**Map Uses:** 1) The said GIS village map will facilitate the constituency-wise maps for conducting elections of the District Cooperative Milk Producers' Unions.

- 2) And the map will facilitate the organization of other extension programs by the office.

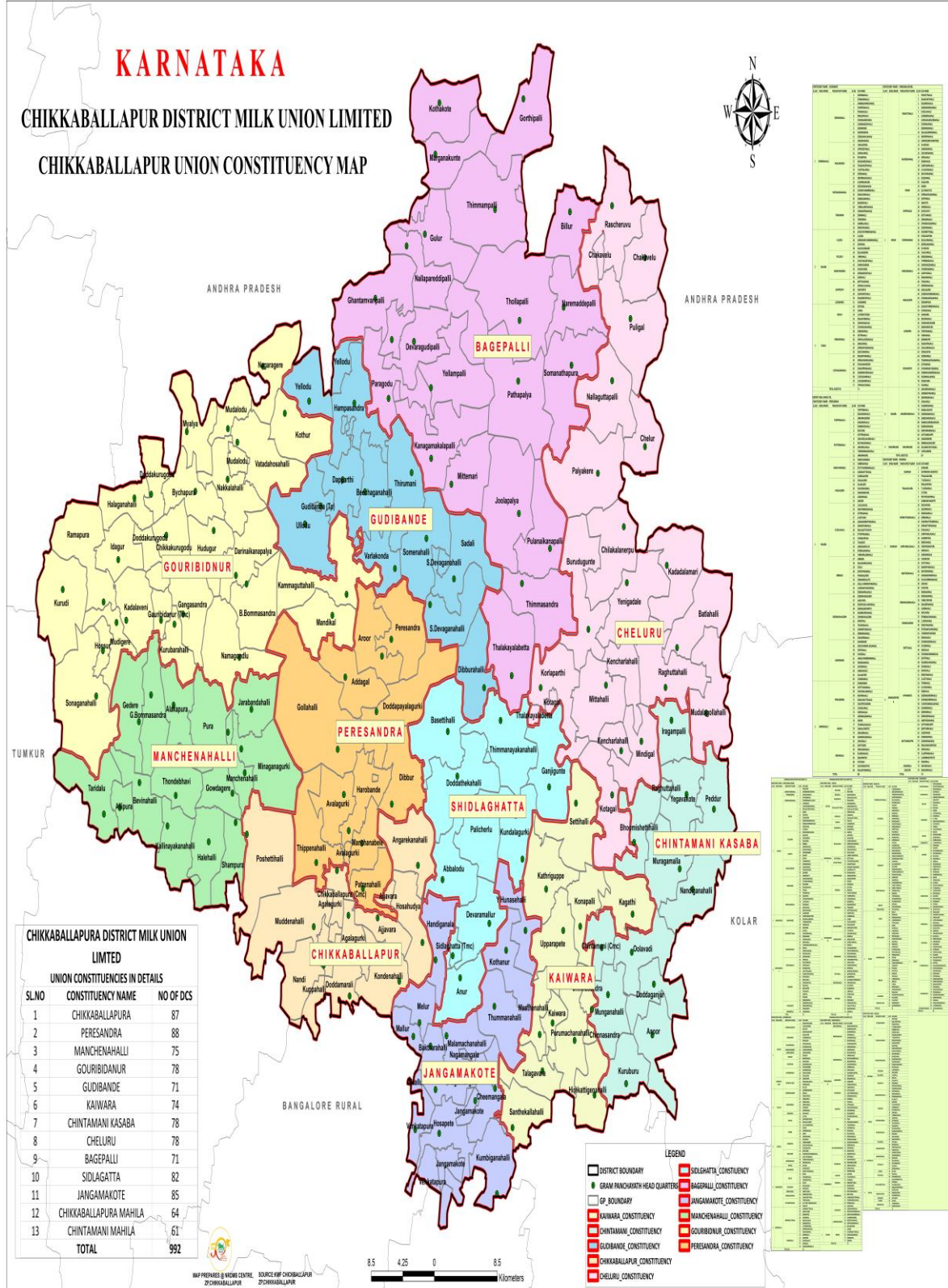
The NRDMS centre will provide the hardcopy and softcopy of the prepared map to the concerned department.

Table: 3

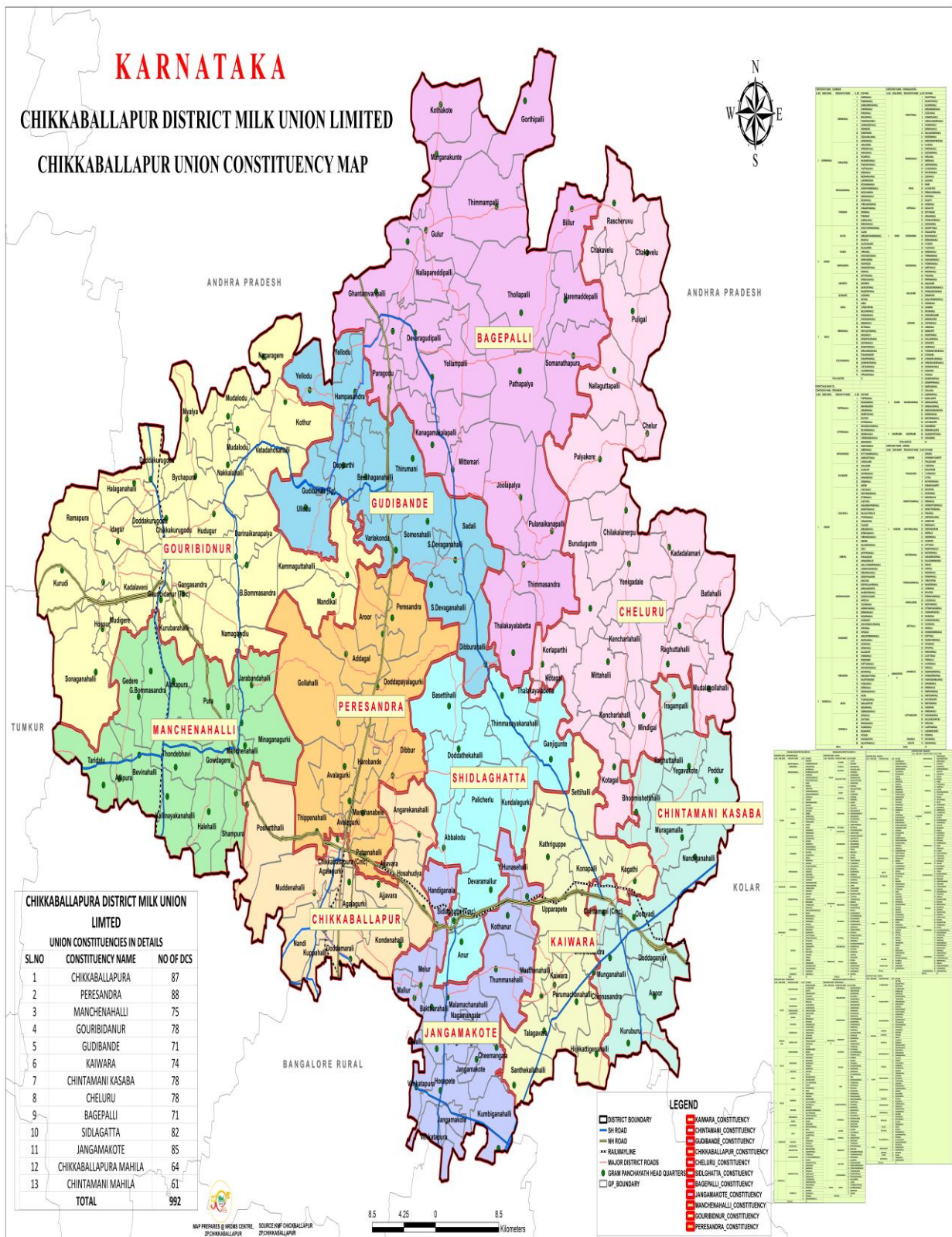
<b>SL.NO</b>	<b>CONSTITUENCY NAME</b>	<b>NO OF DCS</b>
1	CHIKKABALLAPURA	87
2	PERESANDRA	88
3	MANCHENAHALLI	75
4	GOURIBIDANUR	78
5	GUDIBANDE	71

6	KAIWARA	74
7	CHINTAMANI KASABA	78
8	CHELURU	78
9	BAGEPALLI	71
10	SIDLAGATTA	82
11	JANGAMAKOTE	85
12	CHIKKABALLAPURA MAHILA	64
13	CHINTAMANI MAHILA	61
<b>TOTAL</b>		<b>992</b>









## **GIS USES FOR PLANNING, PROGRAMME MONITORING AND STATISTICS DEPARTMENT**

**Objectives:** As per the orders of the Director, Planning, Programme Monitoring and Statistics Department, Bangalore, guidelines have been issued to prepare action plans for the details of the buildings grant in the draft annual budget for the programmes of Panchayath Raj Institutions for the years 2025-26 and 2026-27 through Geo Spatial maps. Similarly, as per the instructions given by the government for the department-wise approved action plans for the year 2025-26, the information has been directed to be prepared through maps. Similarly, the purpose is to obtain the details of department-wise building works and prepare maps using GIS technology through NRDMS.

### **Statistics Requirement:**

- 1) Taluk-wise and village-wise data collection
- 2) Need for latitude and longitude information.

**Map Uses:** Geo Spatial maps of the building works related to the approved action plan for the year 2025-26 and the works to be undertaken in the year 2026-27 will be helpful in knowing the progress details of the works when they are prepared and shown through the map. It will be useful to know the works to be taken up for old works.

And the relevant maps will be provided to the Planning, Programme Coordination and Statistics Department, Bangalore in soft copy and hard copy by the NRDMS Centre

Table:4

	<b>Taluk</b>	<b>Year</b>	<b>Work Details</b>	<b>Work Place</b>	<b>Latitude</b>	<b>Longitude</b>
1	Chikkaballapur	2025-26	Construction of a shelter with zinc sheets on the roof and installation of tiles in Joint Director of Agriculture Office	Joint Director of Agriculture, Chikkaballapur	13.40515	77.72711
2	Chikkaballapur	2025-27	Deposit & installation of connection materials to obtain permanent electricity connection from BESCOM for Joint Director of Agriculture Office new building	Joint Director of Agriculture, Chikkaballapur	13.404711	77.727484

Table:5

<b>Sl.No</b>	<b>Taluk</b>	<b>Year</b>	<b>Work Details</b>	<b>Work Place</b>	<b>Latitude</b>	<b>Longitude</b>
1	Chikkaballapur	2026-27	Interior work and False ceiling work at Joint Director of Agriculture office in 1st Floor.	Joint Director of Agriculture, Chikkaballapur	13.404708	77.727455
2	Chikkaballapur	2026-27	Interior work and False ceiling work at Assistant Director of Agriculture office new building in Shidlaghatta	Assistant Director of Agriculture, Shidlaghatta	13.41635	77.85368
3	Chikkaballapur	2026-27	Construction compound for RSK Building of Somenahalli Hobli, Gudibande Taluk	RSK Building of Somenahalli Hobli, Gudibande Taluk	13.64319	77.82506
4	Chikkaballapur	2026-27	Construction compound for RSK Building of Bashettihalli Hobli, Shidlaghatta Taluk	RSK Building of Bashettihalli Hobli, Shidlaghatta Taluk	13.53109	77.85824

5	Chikkaballapur	2026-27	Construction compound for RSK Building of Sadli Hobli, Shidlaghatta Taluk	RSK Building of Sadli Hobli, Shidlaghatta Taluk	13.62534	77.87858
6	Chikkaballapur	2026-27	Construction compound for RSK Building of D.Palya Hobli, Gauribidanur Taluk	RSK Building of D.Palya Hobli, Gauribidanur Taluk	13.638195	77.604172

Table:6

S.L	Taluk Name	Name of the Hostel and HIC Code	Name of Village Panchayat	Hobli name	Details of work	Latitude	Longitude
1	2	3	4	5	6	8	9
1	Gudibande	BCWD314--SOMENAHALLI--Pre--General--Boys Hostel	Somenahalli	Somenahalli	Construction of Additional Room	13.64539	77.83152
2	chikkaballapura	BCWD1747--CHIKKABALLAPURA - TOWN--Post--Medical & Engineering --Boys Hostel	Agalagurki	Nandi	Repairing the pipe line of the toilets and Plumbing repair work	13.408118	77.731469
3	chikkaballapura	BCWD1751--CHIKKABALLAPURA--Post--Model--Girls Hostel	Chikkaballapur Town	Kasaba	Repairing the pipe line of the toilets and Plumbing repair work	13.444507	77.710146
4	CHINTAMANI	BCWD1758--CHIKKABALLAPURA-TOWN--Post--Girls Hostel	Chintamani	Kasaba	Kitchen, Dining Hall and Windows Repair work	13.394489	78.043238
5	CHINTAMANI	BCWD1756--CHINTHAMANI--Post--Girls Hostel	Chintamani	Kasaba	Windows Repair work and installation of Mosquito mesh to the Windows	13.394489	78.043238
6	GOURIBIDANURU	BCWD1760--GOURIBIDANURU--Post--Girls Hostel	Gaudibidanur Town	Kasaba	Remaining Construction of Compound wall	13.603298	77.507739

7	BAGEPALLI	BCWD1741-- BAGEPALLI--Post--Boys Hostel	Ghantamvaripalli	Kasaba	Borewell Digging, Pump Motor Installation and Electrification	13.78495	77.778 78
8	BAGEPALLI	BCWD1745-- BAGEPALLY TOWN-- Post--Girls Hostel	Bagepalli Town	Kasaba	Borewell Digging and Electrification	13.78043	77.799 78

Table:7

S.L	Taluk Name	Name of the Hostel and HIC Code	Name of Village Panchayat	Hobli name	Details of work	Latitude	Longitude
1	2	3	4	5	6	8	9
1	Bagepalli	BCWD288--BELLURU--Pre-- General--Boys Hostel	Billur	Billur	The work of painting the building for this dormitory.	13.854732	78.009927
2	Bagepalli	BCWD290--CAKAVELU--Pre-- General--Boys Hostel	Chakavelu	Billur	Installation of gate for this dormitory compound, installation of pipe line from Syntax.	13.820491	78.093923
3	Bagepalli	BCWD291--JULAPALYA--Pre-- General--Boys Hostel	Julapalya	Mittemari	The work of painting the building for this dormitory.	13.784518	77.777635
4	Chikkaballapura	BCWD1747-- CHIKKABALLAPURA -TOWN-- Post--Medical & Engineering -- Boys Hostel	Agalagurki	Nandi	01 toilet repair 4 window glass repair, 1st and 2nd floor plumbing work for this building.	13.408118	77.731469
5	Chikkaballapur	BCWD1749-- CHIKKABALLAPURA--Post-- General--Girls Hostel	City Council	Chikkaballapur	Repair of 02 toilets, installation of 2 toilet doors, 4 window glass repairs and painting of kitchen and storage rooms of this dormitory.	13.433971	77.722036
6	Chikkaballapur	BCWD1751-- CHIKKABALLAPURA--Post-- Model--Girls Hostel	Chikkaballapur Town	Kasaba	3rd floor plumbing repairs, repair of leaking roof in living rooms, dishwasher in kitchen, installation of sliding doors to windows.	13.444507	77.710146

7	Chinthamani	BCWD297--BATLALLI--Pre--General--Boys Hostel	Batlahalli	Munganahalli	Construction of roofing, 4 toilets and bathrooms for this dormitory building and repair of electrical wiring to the building.	13.581823	78.136793
8	Chinthamani	BCWD298--BURUDAGUNTE--Pre--General--Boys Hostel	Burudagunte	Chilakalanerpu	The work of repairing the roof and electrical wiring of this dormitory building.	13.593019	78.033449
9	Chinthamani	BCWD301--HIREKATTIGENAHALLI--Pre--General--Boys Hostel	Hirekattigenahalli	Kaiwara	Installation of glasses for the windows of this dormitory, repair of toilet and water pipe line.	13.3969	78.0597
10	Chinthamani	BCWD303--T GOLLARAHALLI--Pre--General--Boys Hostel	Chilakalanerpu	Chilakalanerpu	Repairing the roof of the dormitory building, repairing the flooring, repairing the pipe line of the toilets and electrical wiring to the building and painting the entire building with whitewash.	13.640789	78.044124
11	Chinthamani	BCWD305--CHINTHAMANI--Pre--General--Girls Hostel	Chintamani Town	Kasaba	Fixing of the roof of this dormitory building, repair of toilets and bath houses, repair of windows and doors and whitewashing of the entire building.	13.396844	78.049665
12	Chinthamani	BCWD1756--CHINTHAMANI--Post--General--Girls Hostel	Chintamani	Kasaba	Repair work of the roof and shutters of this dormitory,	13.394489	78.043238
13	Gowribidnuru	BCWD306--D PALYA--Pre--General--Boys Hostel	D. Palya	D. Palya	Painting and electrical wiring repair work for this dormitory building	13.628849	77.599609
14	Gowribidnuru	BCWD307--GOURIBIDANURU--Pre--General--Boys Hostel	Gaudibidanur Town	Kasaba	Painting of this dormitory building and roofing work	13.589191	77.436834
15	Gowribidnuru	BCWD308--H NAGASANDRA--Pre--General--Boys Hostel	A big blind spot	Kasaba Hobli	Plastering of this dormitory building and repair work of windows and doors,	13.647395	77.494321
16	Gowribidnuru	BCWD309--HOSURU--Pre--General--Boys Hostel	Hosur	Hosur	Painting of this dormitory building and roofing work	13.589191	77.436834
17	Gowribidnuru	BCWD311--VATADAHOSAHALLI--Pre--General--Boys Hostel	Vadahosahalli	city line	Painting and electrical wiring repair work for this dormitory building	13.702728	77.622279

18	Gowribidnuru	BCWD312--GOURIBIDANURU-- Pre--General--Girls Hostel	Gaudibidanur Town	Kasaba	The work of painting the entire building of this dormitory	13.578249 9	77.5055061
19	Gudibande	BCWD314--SOMENAHALLI-- Pre--General--Boys Hostel	Somenahalli	Somenahalli	The above phase of this hostel building includes repairing roof plastering, plastering, whitewashing the building, installing iron doors for toilets, repairing water pump and repairing electrical wiring of the building.	13.64539	77.83152
20	Gudibande	BCWD315--GUDIBANDE--Pre-- General--Girls Hostel	Town Panchayat	Gudibande	The above phases of this dormitory building include repairing roof plastering, whitewashing the building, installing iron doors for toilets, repairing septic tank and repairing electrical wiring of the building.	13.67072	77.71097
21	Sidlagatta	BCWD316--DIBBURLALLI--Pre-- General--Boys Hostel	Dibburahalli	Sadali	Top ceiling work for this bedroom	13.556536	77.905135

Table:8

Health And Family Welfare Department-2210      1. Medical and public health programs							
Sl No	Programme In Taluk	Institution	Institution Name	Latitude	Longitude	Department Name	Head Of Account
1	Gowribidanuru	PHC	Thondebhavi	13.5283	77.5763	Health Department	2210-00-101-0-36 Health Department Building Management
2	Gowribidanuru	PHC	Gedare	13.5356	77.4826		
3	Gowribidanuru	PHC	Idaguru	13.6432	77.4534		

4	Gowribidanuru	Sub Center	Bevinahalli	13.5080	77.4834		
5	Gowribidanuru	Sub Center	Alakapura	13.5560	77.52499		
6	Gowribidanuru	Sub Center	Doddakurugodu	13.6112	77.4971		
7	Chickballapur	PHC	Nayanahalli	13.4123	77.7716		
8	Chickballapur	PHC	Muddenahalli	13.5068	77.7346		
9	Chickballapur	PHC	Nandi	13.3869	77.69827		
10	Chickballapur	Sub Center	Doddapailagurki	13.54054	77.77131		
11	Chickballapur	PHC	Dibburu	13.4830	77.7917		
12	Chintamani	PHC	Kotagal	13.4909	78.0566		
13	Chintamani	PHC	Burudugunte	13.5946	78.0252		
14	Chintamani	PHC	Kuruburu	13.3222	78.0773		
15	Chintamani	PHC	Santhekallahalli	13.2778	77.9446		



16	Chintamani	PHC	Yagavakote	13.4916	78.1571		
17	Chintamani	PHC	Iragampalli	13.5361	78.1291		
18	Chintamani	PHC	Murugamalla	13.4389	78.1265		

Table:9

Sl. No.	Taluk	Brief Description of Programme / Works	Insitution names	LATITUDE	LONGITUDE
1	Bagepalli	Roof repair of Amarajyothi Veterinary Hospital, electrification, and roof repair of store room	Veterinary Hospital Mittemari	13.6855	77.8646
2		Roof repair of the old building of Gooluru Veterinary Dispensary	Veterinary Dispensary Guluru	13.8402233	77.8335096
3		Construction of compound wall at Bagepalli Veterinary Hospital and roof repair of jeep shed	Veterinary Hospital Bagepalli	13.782909	77.794534
4		Construction of compound wall at Julupalya Primary Veterinary Health Centre	PVC, Julpalya	12.939243	77.512396
5	Chikkaballapur	Construction of women's toilet at Chikkaballapur Veterinary Hospital and laying concrete in the surrounding premises	Veterinary Hospital Chikkaballapura	13.435739	77.731883
6		Renovation of veterinary doctor's room and fixing of tiles at Reddigollavarahalli Veterinary Dispensary	Veterinary Dispensary Reddygollavarahalli	13.52779216	77.76395794
7		Roof repair of the Office of Deputy Director (Administration), Chikkaballapur and construction of sump	Deputy Director(admin) office	13.435957	77.732317

8		Construction of concrete flooring around the premises of the Assistant Director's Office, Sheep & Wool Development Corporation, Chikkaballapur and construction of a new store room	Sheep and wool Development Corporation limited Chikkaballapura	13.4355992	77.732002
9	Chintamani	Fixing of tiles in administrative block of Chintamani Veterinary Hospital, wooden panel work and roof repair of Chief Veterinary Officer's room, electrification, whitewashing of MVC and MOU sheds	Veterinary Hospital Chintamani	13.3730646	78.1074172
10		Installation of gate at Nadampalli Veterinary Dispensary	Veterinary Dispensary Nadampalli	13.577239	78.071764
11		Construction of compound wall at Doddabommanahalli Primary Veterinary Health Centre	PVC, Doddabommanahalli	13.311429	78.115192
12		Raising a portion of compound wall and installation of gate at Kadadanamari Veterinary Dispensary	Veterinary Dispensary Kadadanamari	13.633125	78.123368
13		Filling of low-lying area, electrification, whitewashing, compound wall construction, concreting and gate installation at Silkaleneppuru Veterinary Hospital	Veterinary Hospital Chilakalanerpu	13.6569319	78.0757433
14	Gouribidanur	Repair and renovation works at Manchenahalli Veterinary Hospital	Veterinary Hospital Manchenahalli	13.50059	77.60194
15		Whitewashing and repair works at Kurudi Primary Veterinary Health Centre	PVC Kurudi	13.62287	77.38956
16		Whitewashing and repair of building at Nagargere Veterinary Hospital	Veterinary Hospital Nagargere	13.68791	77.59344
17		Whitewashing of building at Tondebhavi Veterinary Hospital	Veterinary Hospital Thondebhavi	13.49483	77.52898

18	Gudibande	Construction of sump, overhead tank, toilet, electrification and whitewashing at Tirumani Primary Veterinary Health Centre	PVC, Thirumani	13.6932	77.81495
19		Construction of sump, water connection, repair of windows and doors and whitewashing at Somenahalli Veterinary Hospital	Veterinary Hospital Somenahalli	13.00494	77.727943
20		Construction of compound wall and installation of gate at Gudibande Veterinary Hospital	Veterinary Hospital Gudibande	13.67165	77.706207
21	Sidlaghatta	Construction of compound wall, window repairs and whitewashing at Palicheru Veterinary Dispensary	Veterinary Dispensary Palicherlu	13.478891	77.903892
22		Roof repair, whitewashing and electrical repair at Malavimachanahalli Veterinary Dispensary	Veterinary Dispensary Malamachanahalli	13.340925	77.863917
23		Roof repair and whitewashing at Malur Veterinary Dispensary	Veterinary Dispensary Malluru	13.340425	77.815781

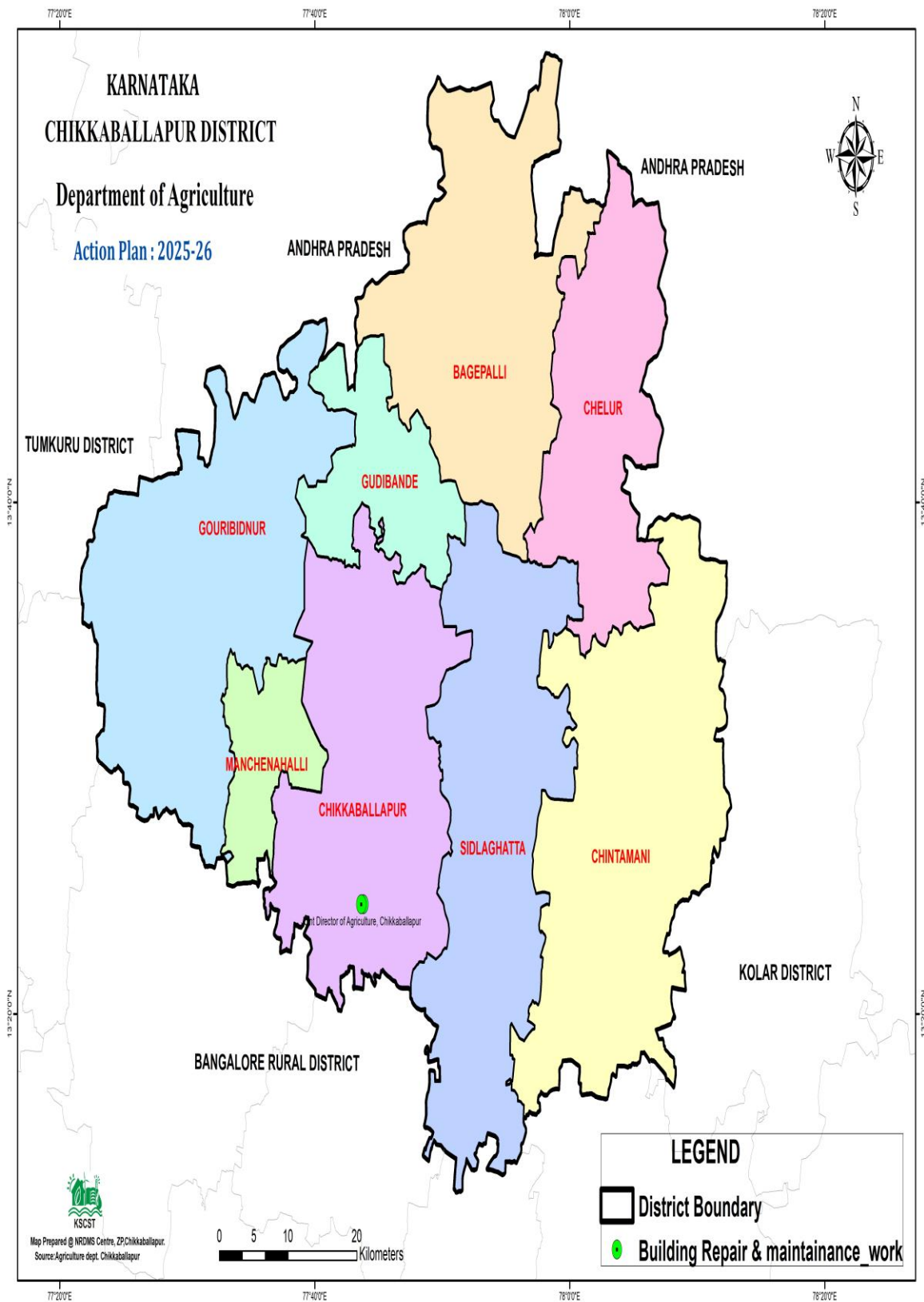
Table:10

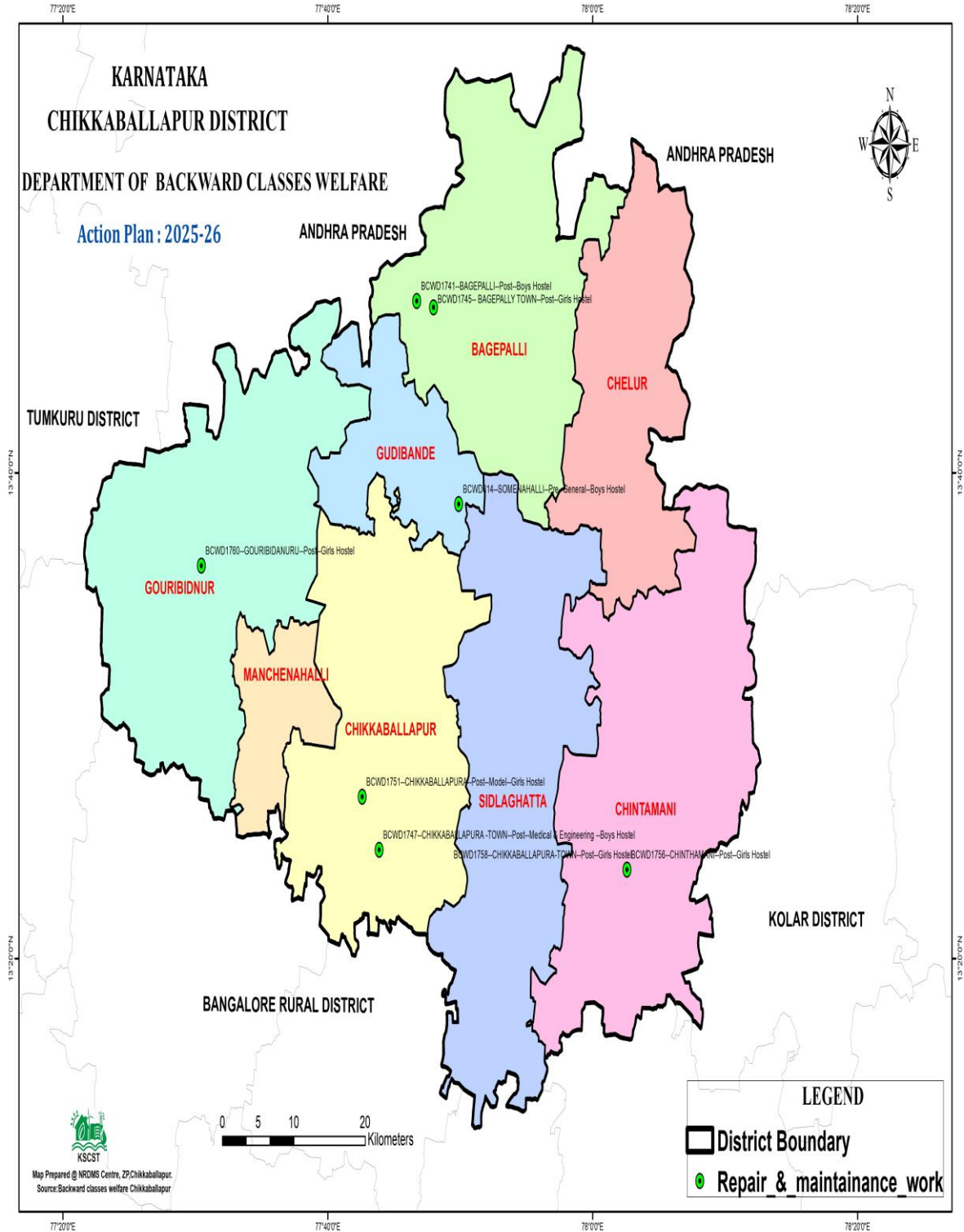
SI-No	Brief Description of Programme / Works	Taluk	Institution Names	LATITUDE	LONGITUDE
1	Construction of the compound of Gauribidanur Veterinary Hospital (partition of Marigamma Temple)	Gouribidnur	Veterinary Hospital Gouribidnaur	13.608	77.515
2	Construction of Marganukunte Veterinary Clinic Compound	Bagepalli	Veterinary Dispensary Marganukunte	13.888	77.844
3	Construction of Patapalaya Veterinary Clinic Compound		Veterinary Dispensary Pathapalya	13.755	

4	Whitewashing and construction of the septic tank at Bagepalli Veterinary Hospital		Veterinary Hospital Bagepalli	13.783	77.795
5	Construction of Julapalya Primary Veterinary Center Compound		PVC julpalya	13.939	77.512
6	Waterproofing of the first floor roof of the Chief Veterinary Officer's Office (Administration), Veterinary Hospital, Chikkaballapur, construction of a new women's toilet and officers' toilet, installation of sheets for the Saba Bhavan on the hospital portico, installation of walls, windows and doors.	<b>Chickballapur</b>	Veterinary Hospital Chikkaballapura	13.436	77.732
7	Veterinary Clinic Gidnahalli: Repair of concrete, tiles, office and toilet doors outside the office, Sarki		Veterinary Dispensary Gidnahalli	13.406	77.818
8	Veterinary Hospital, Nandi: Sarki, Painting, Electrical Wiring		Veterinary Hospital nandi	13.389	77.698
9	Veterinary Clinic Mailappanahalli: Water Proofing,		Veterinary Dispensary Mylappanahalli	13.153	77.641
10	Primary Veterinary Center Kolavanahalli: Tiles, Waterproofing, Syntex,		PVC Kolavanahalli	13.382	77.749
11	Construction of Yanamalapadi Veterinary Clinic Compound	<b>Chintamani</b>	Veterinary Dispensary Yanamalapadi	13.611	78.189
12	Construction of compound height of Kaiwara Veterinary Hospital		Veterinary Hospital Kaiwara	13.352	78.994
13	Room renovation and whitewashing of Gauribidanur Veterinary Hospital	<b>Gouribidnur</b>	Veterinary Hospital Gouribidanur	13.608	77.515
14	Whitewashing of Kurudi Primary Veterinary Center		PVC, Kurudi	13.623	77.390
15	Whitewashing of Melya Primary Veterinary Center		PVC, melya	13.720	77.543

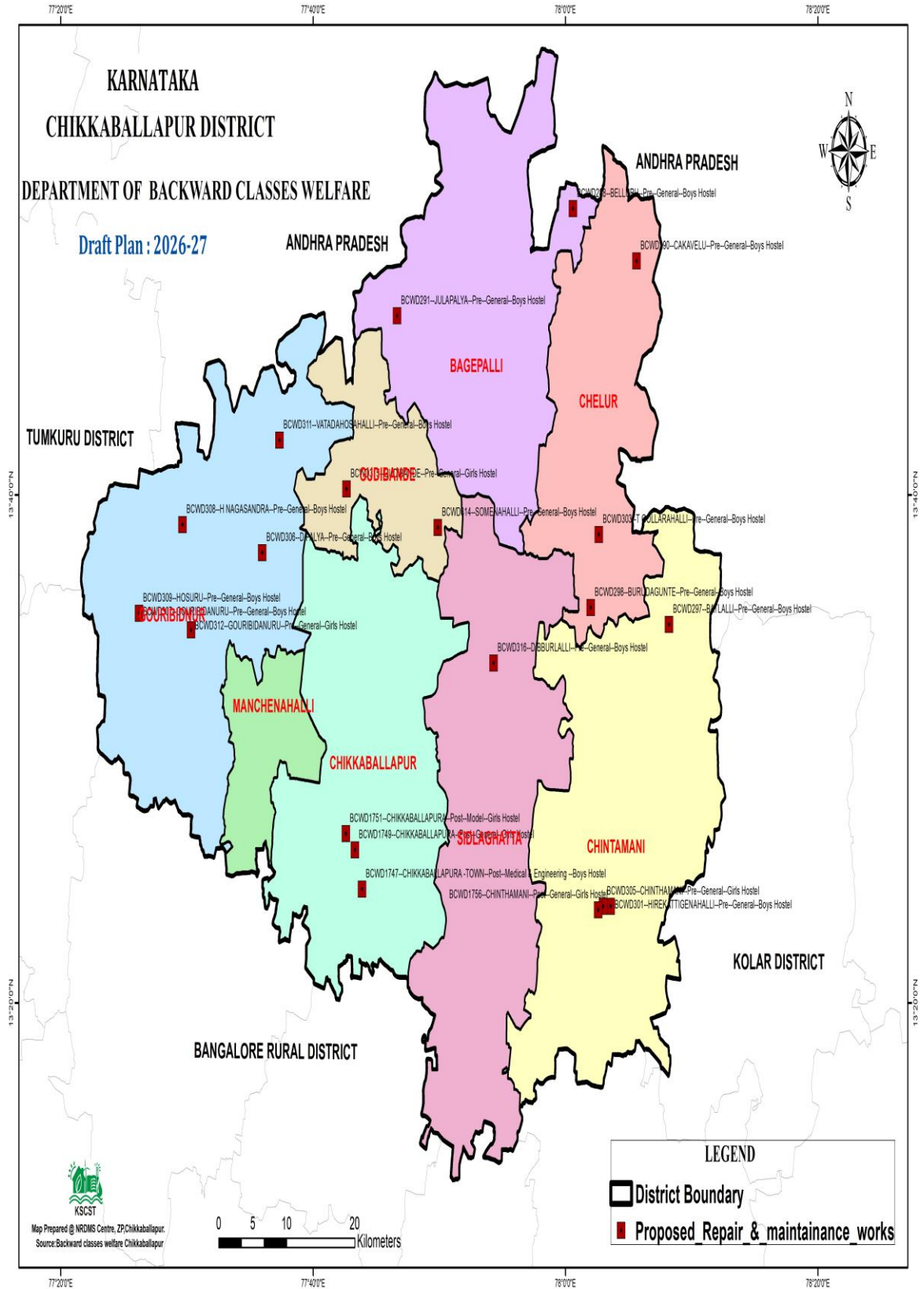
16	Window and door repair of Vidhurashwattha Veterinary Hospital, whitewashing		Veterinary Dispensary Vidhurashthwa	13.670	77.502
17	Whitewashing of Tondebhavi Veterinary Hospital		Veterinary Hospital Thondebhavi	13.495	77.529
18	Building repair and compound construction of Gudibande Veterinary Hospital	<b>Gudibande</b>	Veterinary Hospital Gudibande	13.672	77.706
19	Building repair of Somenahalli Veterinary Hospital		Veterinary Hospital Somenahalli	13.005	77.728
20	New operating room of Shidlaghatta Veterinary Hospital, roof repair of old building, whitewashing	<b>Shidlaghatta</b>	Veterinary Hospital Sidlaghatta	13.385	77.865
21	Roof repair of Mallur Veterinary Hospital, whitewashing, electrical repairs, toilet repairs		Veterinary Dispensary Malluru	13.340	77.816
22	Roof repair of Malamachanahalli Veterinary Hospital, whitewashing, electrical Repair		Veterinary Dispensary Malamachanahalli	13.341	77.864
23	Jangamakote, Veterinary Hospital Roof Repair, Plumbing, Door Repair, Electrical Repair Work Whitewashing		Veterinary Hospital Jangamakote	13.260	77.845
24	Cheemangala Veterinary Hospital Travis Shelter, Electrical Repair, Overhead Tank		Veterinary Dispensary Cheemangala	13.313	77.908
25	Dibburahalli Veterinary Hospital Roof Repair, Plumbing, Electrical Repair, Whitewashing, Toilet Repair		Veterinary Dispensary Dibburahalli	13.557	77.906
26	Palicherlu Veterinary Hospital Overhead Tank, Roof Repair, Electrical Repair, Plumbing Work		Veterinary Dispensary Palicherlu	13.479	77.904
27	Y Hunasenahalli Veterinary Hospital Roof Repair, Plumbing, Electrical Repair,		Veterinary Dispensary Y.hunasenahalli	13.243	77.565

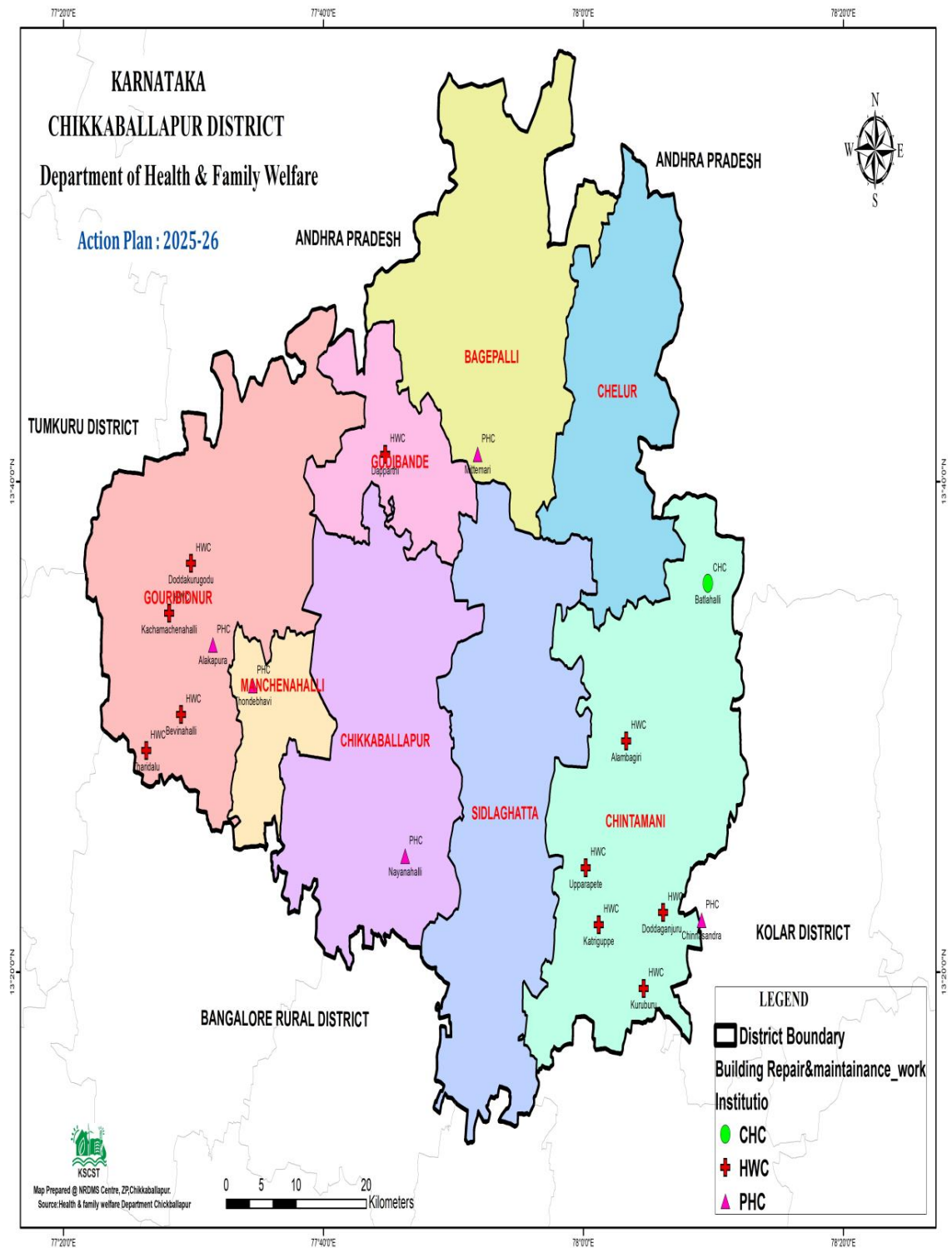
	Whitewashing, Toilet Repair				
28	Thotlaganahalli Veterinary Hospital Roof Repair, Plumbing, Electrical Repair, Whitewashing, Toilet Repair		Veterinary Dispensary Thotlaganahalli	13.310	77.858

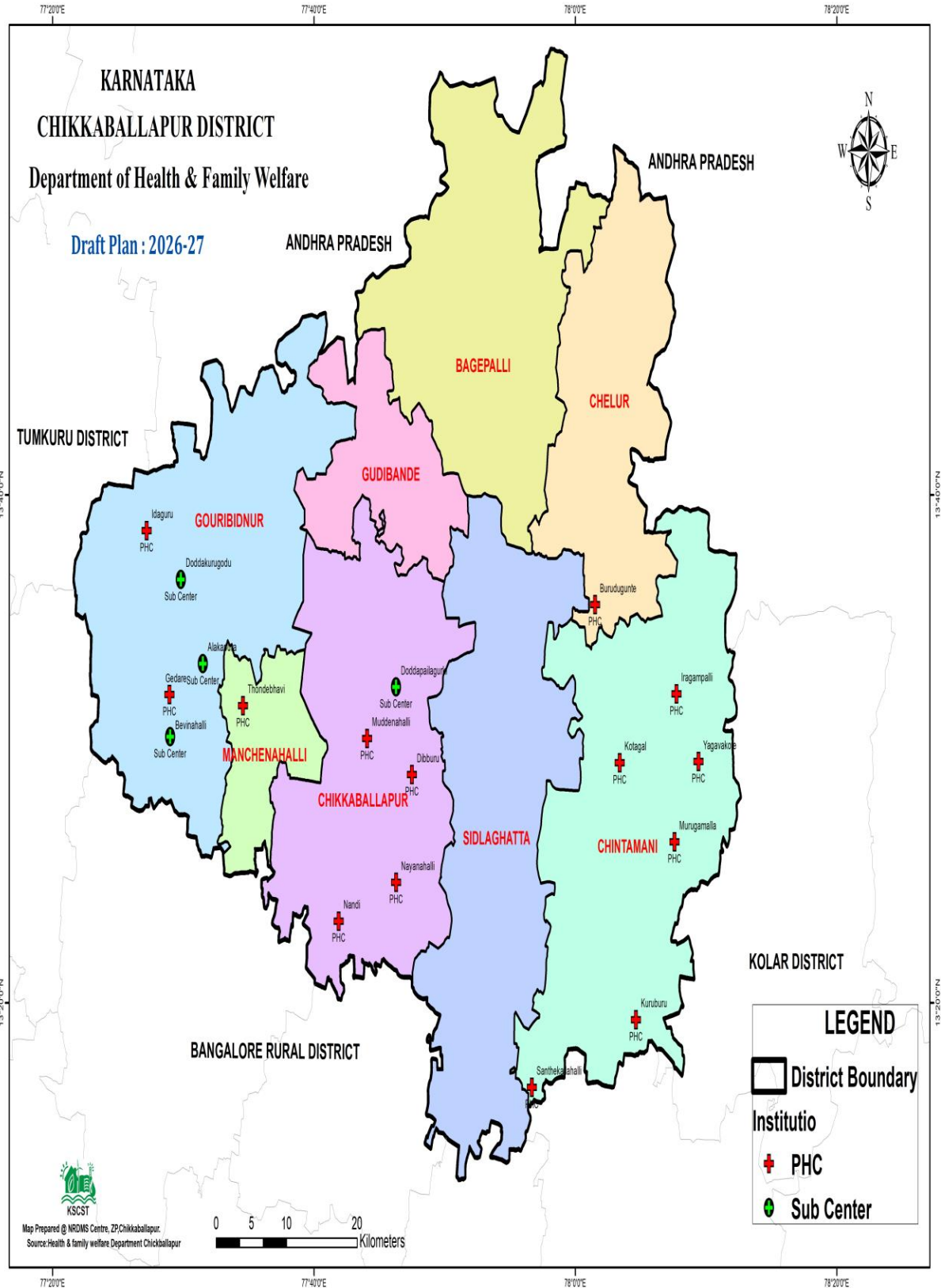






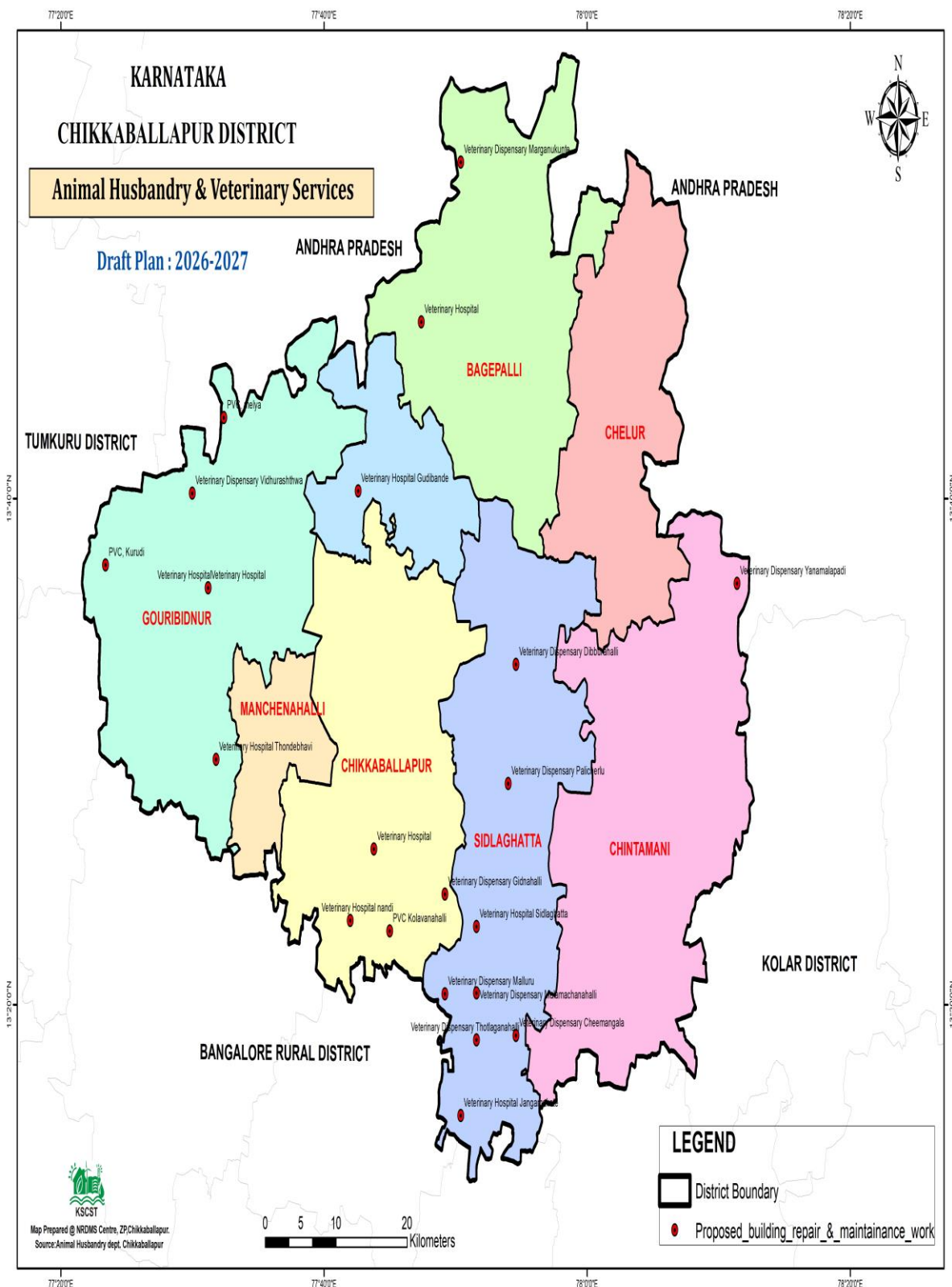


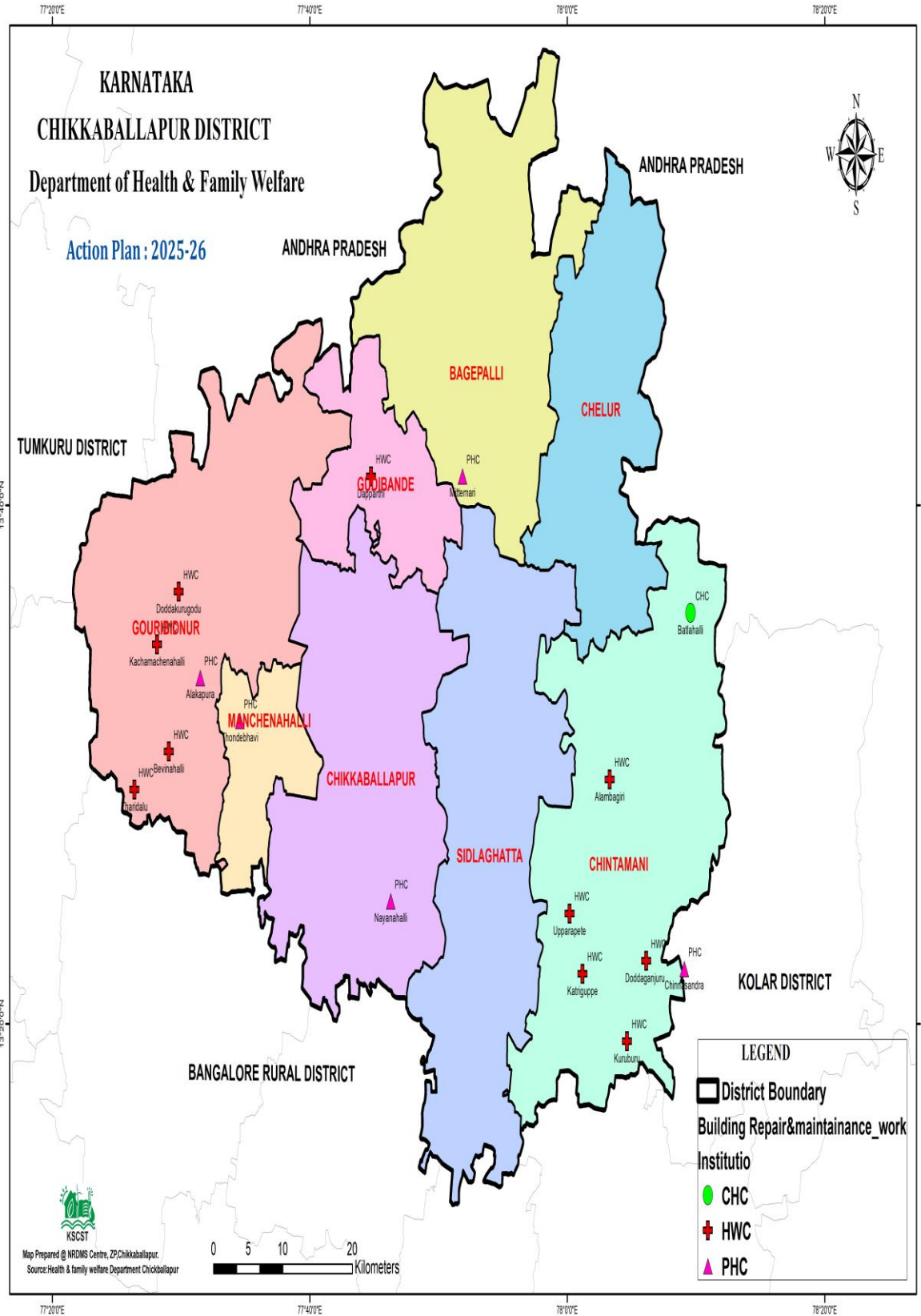


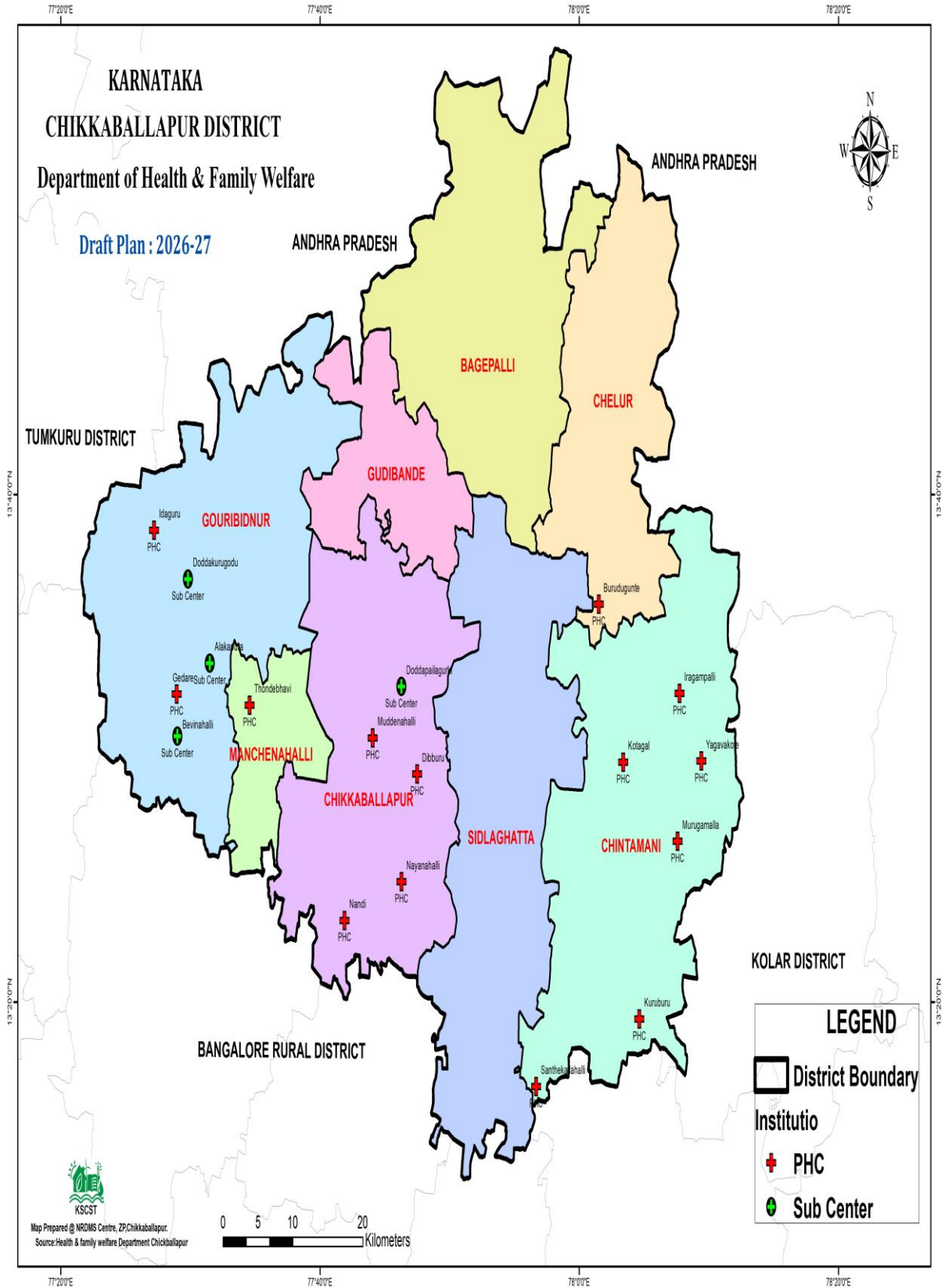












## **7. Training Programmes Attended:**

1. Attended 1 day training program “Yukthadhara training” at ANSIRD Mysore on 11.09.2025

## **8. Training Imparted to Line Departments:**

Provided training to PDO's regarding “Yukthadhara training”

## **9. Science Outreach Activities:**

No Science Outreach Activities were conducted during this period.

## **10. Conclusion:**

### **• Summary of Activities under Take.**

District NRDMS Bangalore rural maintaining various database and providing maps to all line departments. NRDMS is supporting mainly DC office, Election branch, social forest, Disaster management department and all line departments in mapping work and data base creation. Many types of data are used for more than one purpose by more and more one user.

### **• Commitment to Improve NRDMS Activities.**

- Large Diversity of Spatial Data
- Many types of data are used for more than one purpose by more and more one user.
- Utility of data set may be greatly enhanced by merging or linking it with other data sets.
- Reliability/ consistency can be enhanced by correlating different parameters.
- Many organizations are involved in data collection and updating.
- Need for standardization/ compatibility of procedures of data collection and adaptation.
- Need to improve the utilization of data for decision making.

## **11. Annexure:**

### **List of Tables:**

- 1) Scheduled Tribal Welfare Hostels details of Chikkaballapur district.
- 2) Social Welfare Hostels details of Chikkaballapur district.
- 3) Co-operative milk produces union, (CHIMUL) Constituency wise election list



- 4) 2025-26 Civil works Action plan approved details list
- 5) 2026-27 civil works Draft plan proposal works list

**List of Maps:**

- 1) Location map of Scheduled Tribal Welfare hostels , Chickballapur district .
- 2) Location map of Social Welfare Hostels, Chickballapur district.
- 3) Co-operative milk producers union, Constituency wise Election map.
- 4) Action Plan-2025-26 Agriculture, Veterinary, Health & Family welfare, BCM department wise action plan maps.
- 5) Draft Plan-2026-27 Agriculture, Veterinary, Health & Family welfare, BCM department wise draft plan maps.

\*\*\*\*\*