

***NATURAL RESOURCES DATA  
MANAGEMENT SYSTEM  
(NRDMS)***

**MONTHLY ACTIVITY REPORT  
August – November 2025**

**Submitted by  
District NRDMS Centre  
Zilla Panchayat, Davanagere**



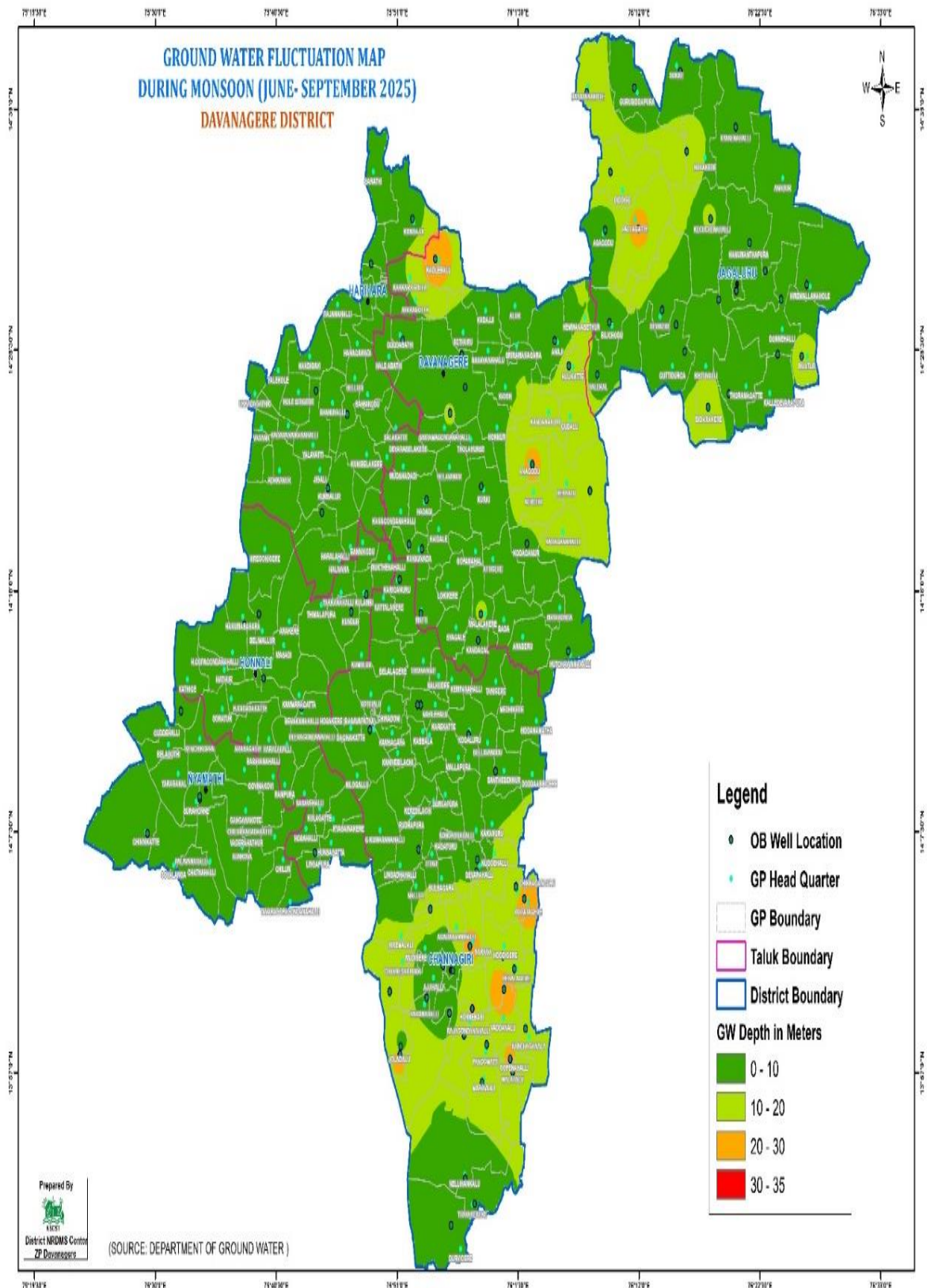
**Submitted to  
Karnataka State Council for  
Science and Technology (KSCST)  
Indian Institute of Science Campus,  
Bengaluru – 560012**

<b>SL No</b>	<b>Headings</b>	<b>Page Num</b>
<b>1</b>	<b>Major Activities Carried Out during the period of August-November 2025</b>	<b>1-20</b>
<b>2</b>	<b>Training Programmes Attended</b>	<b>21</b>
<b>3</b>	<b>Training Imparted to Line Department</b>	
<b>4</b>	<b>Science Outreach Activities</b>	
<b>5</b>	<b>Conclusion</b>	
<b>6</b>	<b>Annexures</b>	<b>22</b>

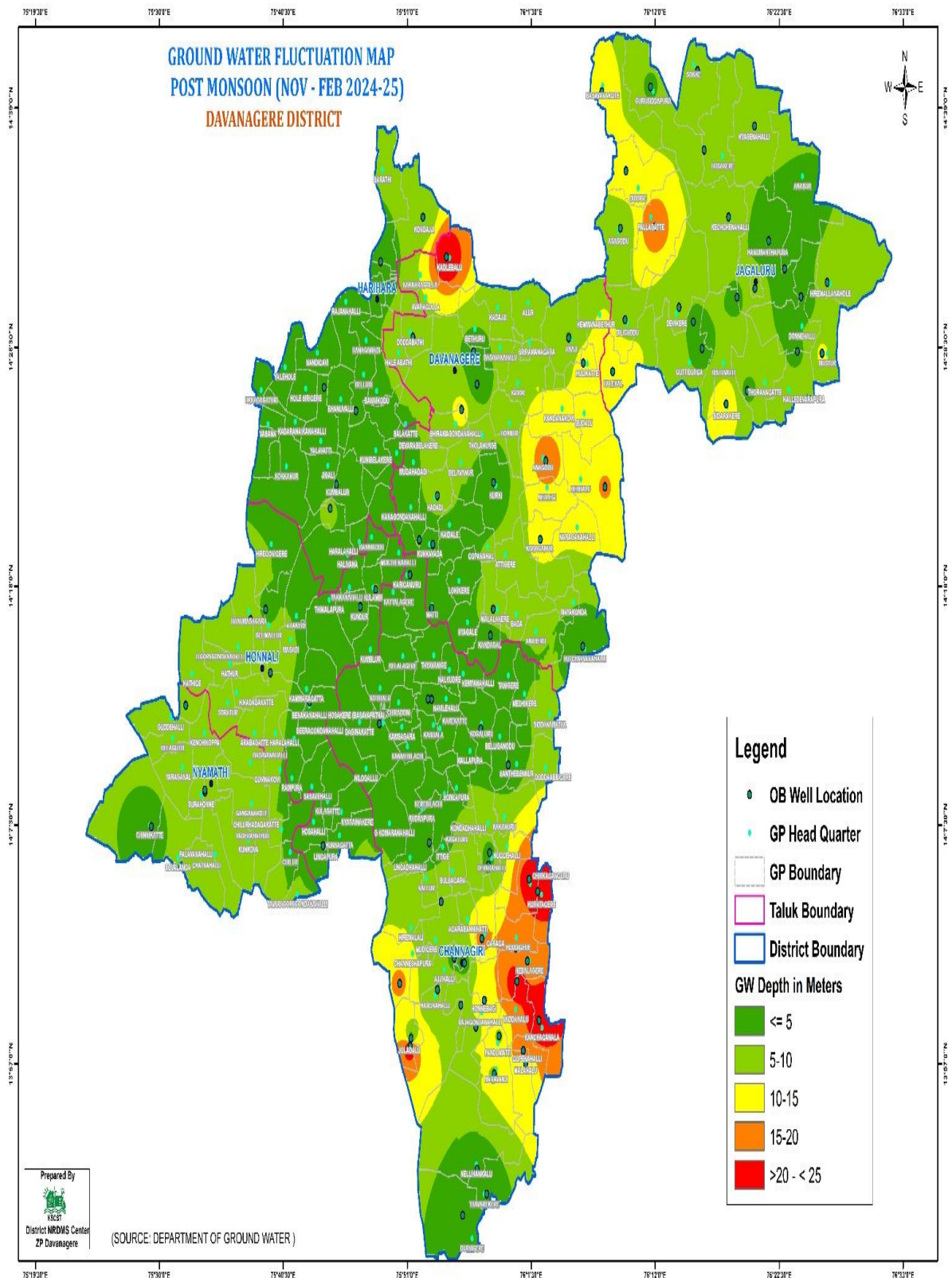
## 1. Major Activities Carried Out during the period of April-July 2025

### Activity: 1

<b>Title of work</b>	Davanagere District Ground Water Fluctuation Map
<b>Department Name</b>	Department of Ground water, Davanagere
<b>Objectives</b>	Davanagere District Ground Water Fluctuation Analysis Study and Report Preparation.
<b>Data Used</b>	District Boundary, Taluk Boundary, GP Boundary, GP Location, OB Well Location and OB well wise data provided by department.
<b>Data Process</b>	OB well wise data (Excel) provided by department was joined to OB Well Location data (.shp) and Using Spatial analysis tool Create a ground water Depth analysis map was generated and provided to department.
<b>Type of Data Provided</b>	PDF and JPEG Maps <b>(Map-1 &amp; 2)</b>



**Map 1: Davanagere District During Monsoon 2025 Ground Water Fluctuation Map.**



**Map 2: Davanagere District Pre Monsoon 2025 Ground Water Fluctuation Map.**

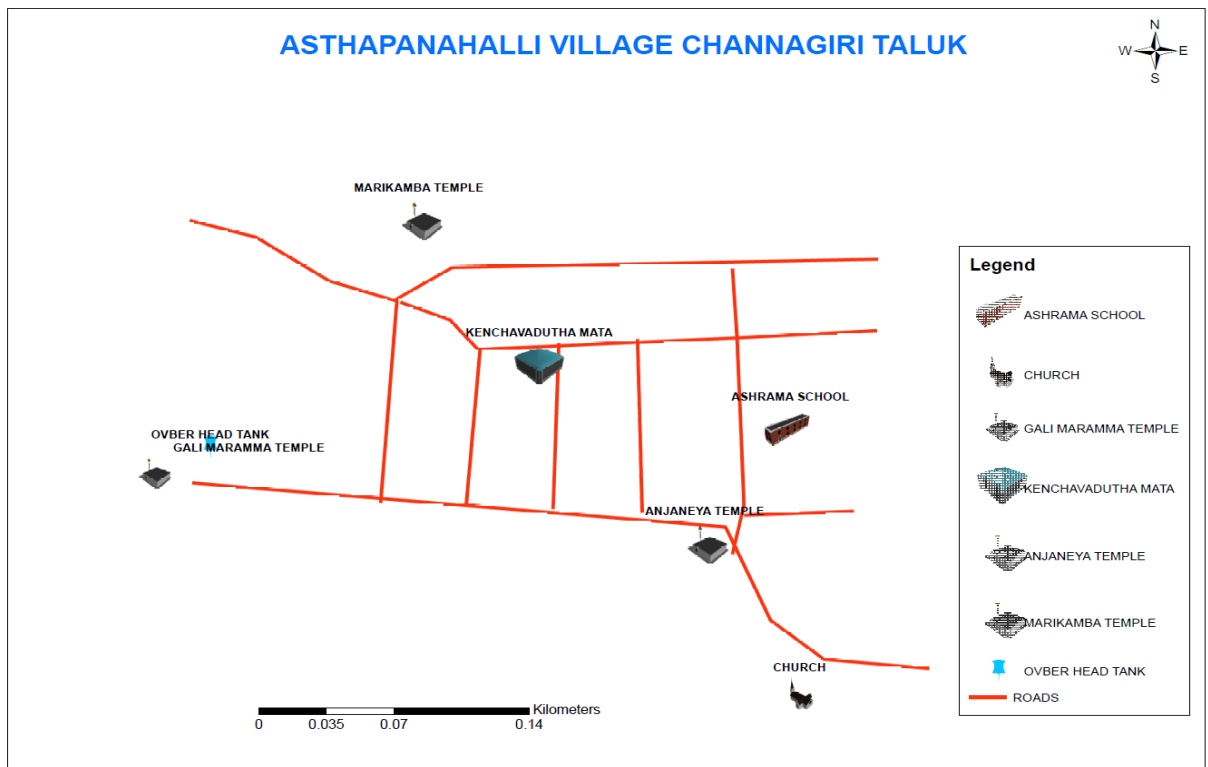
### Activity -2

<b>Title of work</b>	Asthapanahalli Village, Channagiri Taluk, Davanagere Distirct
<b>Department Name</b>	Tribble welfare Office Davanagere.
<b>Objectives</b>	Village Information of Asthapanahalli Village for PRA activity with Villagers
<b>Data Used</b>	Village Boundary, Survey Number Boundary, Land Use Land Cover Map, Roads and Village Location.
<b>Data Process</b>	To submit the Maps and Report to Tribble welfare Office Davanagere, Using Google earth Map and GIS Application and prepare the Maps.
<b>Type of Data Provided</b>	PDF and JPEG Maps <b>(Map-3 to 6)</b>

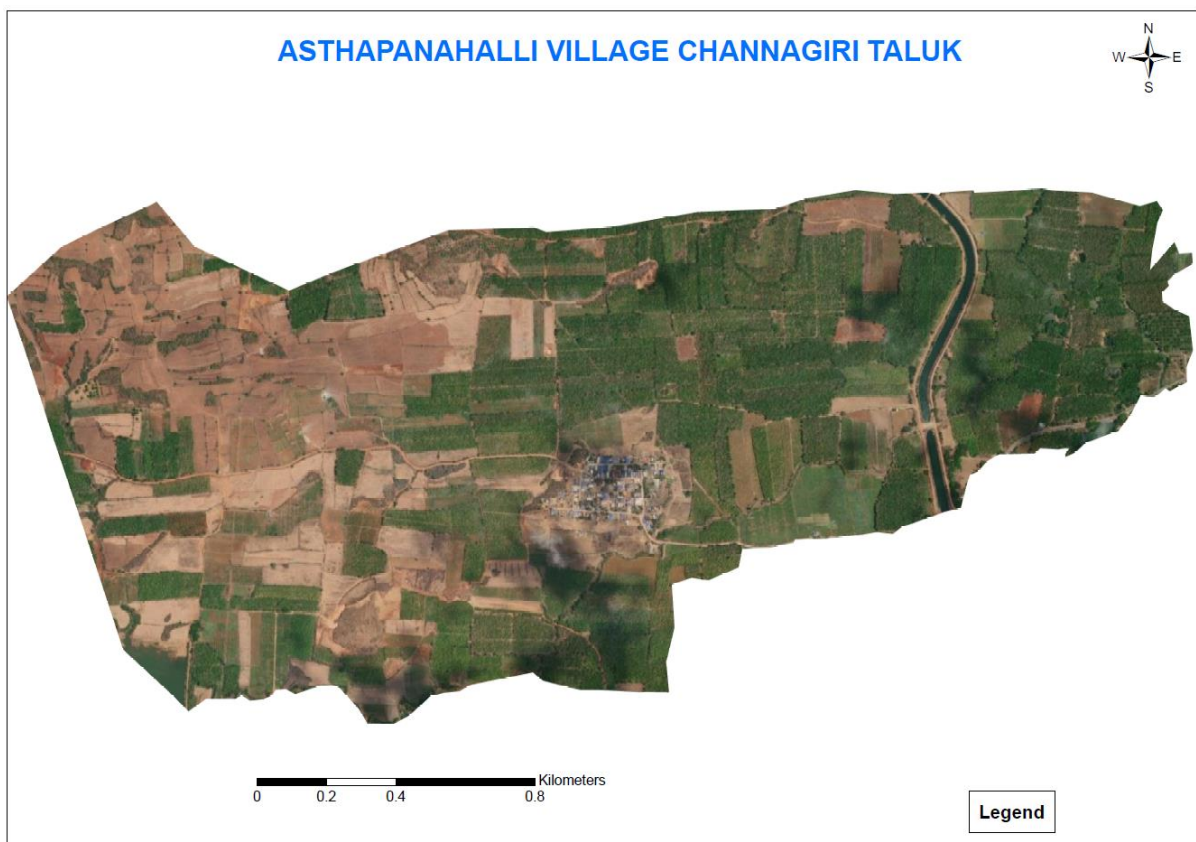




**Map 3: Asthapanahalli Village, Channagiri Taluk, Davanagere Distirct**

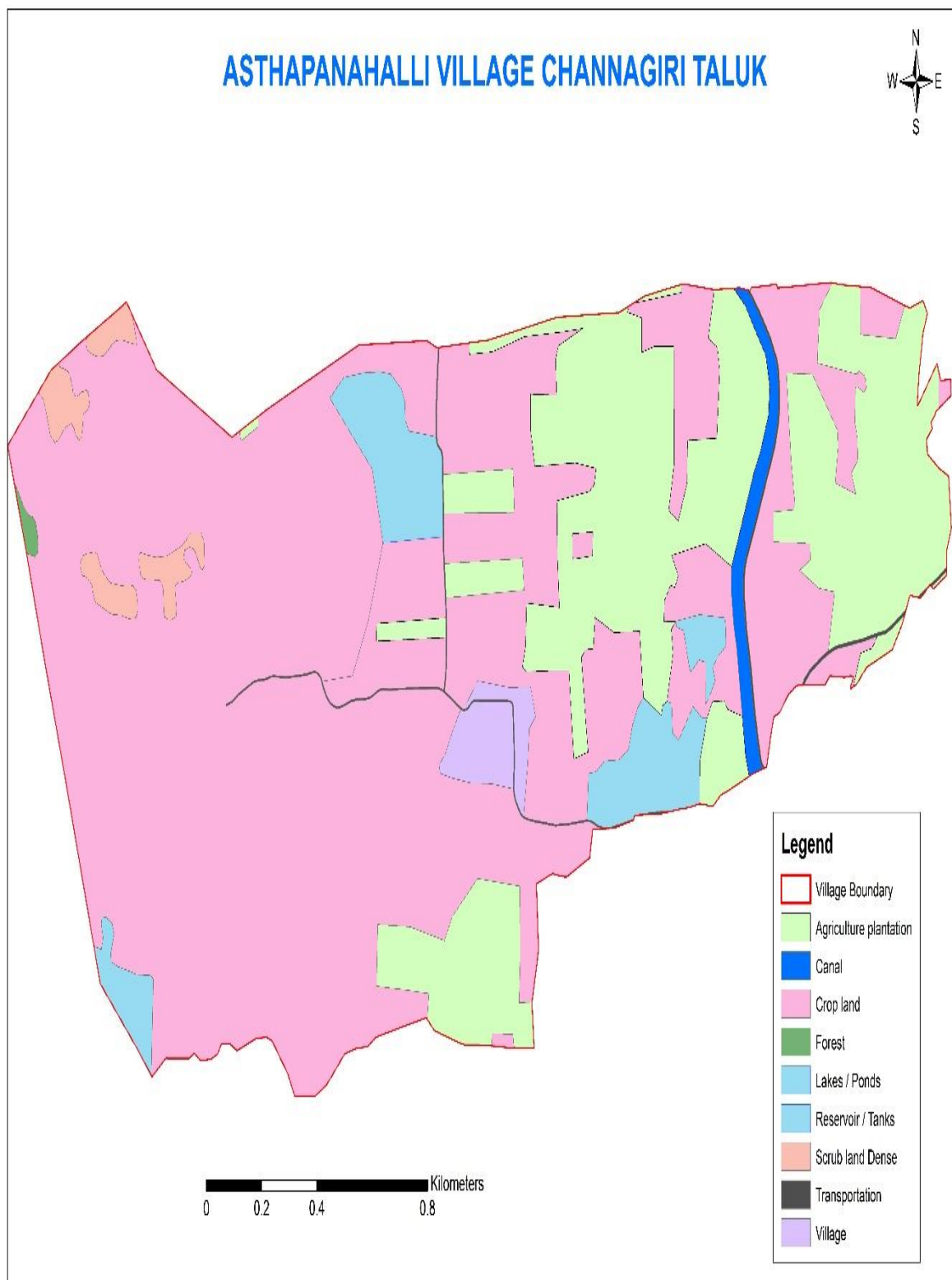


**Map 4: Places of Asthapanahalli Village, Channagiri Taluk, Davanagere District**



**Map 5: Image of Asthapanahalli Village, Channagiri Taluk, Davanagere District**



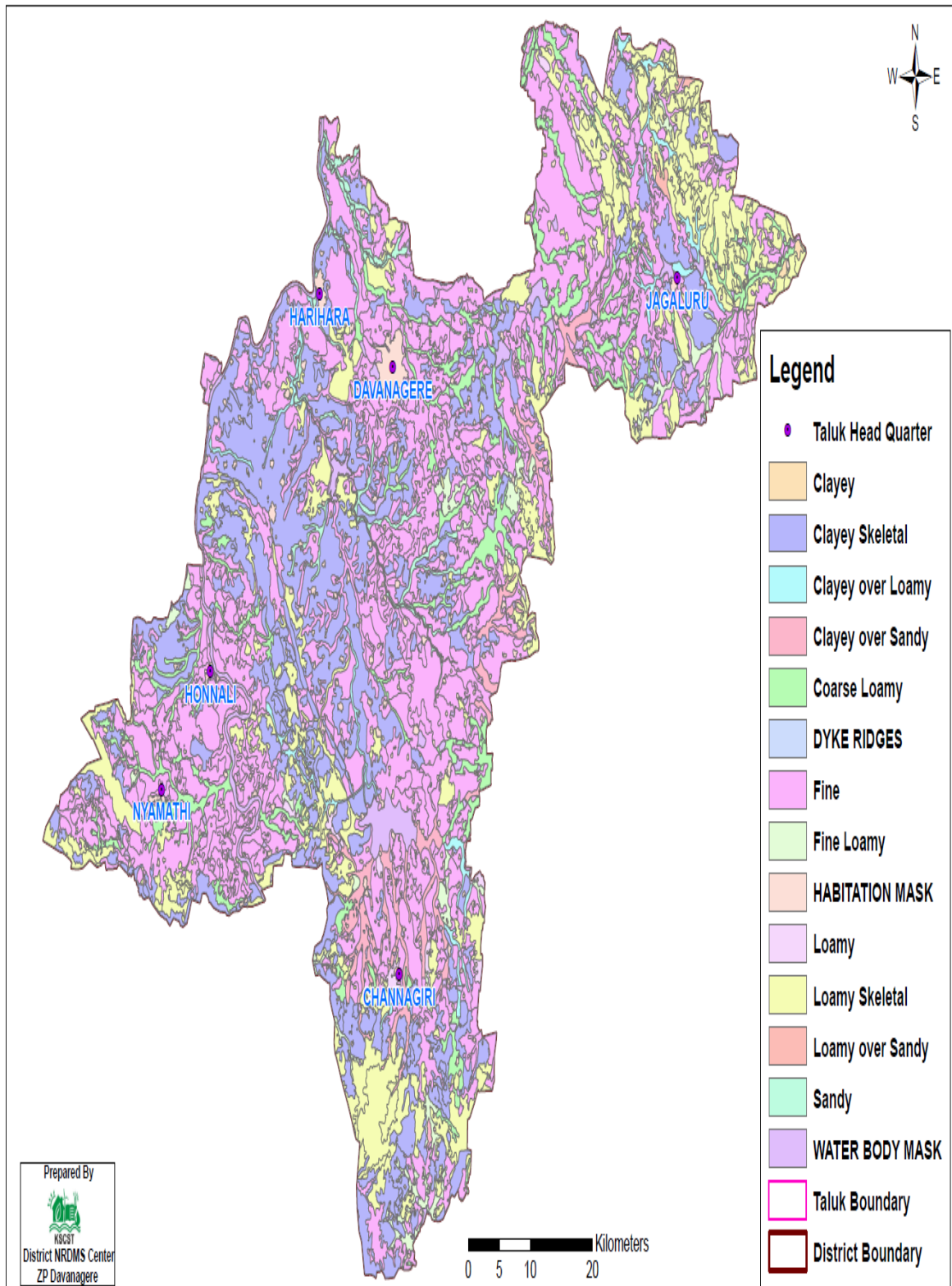


**Map 6: LULC of Asthapanahalli Village, Channagiri Taluk, Davanagere Distirct**

### Activity -3

<b>Title of work</b>	Davanagere District Soil Map and Information Given to Taralubalu Krishi Vignyan Kendra Davanagere
<b>Department Name</b>	ICAR and TKVK Office, Davanagere
<b>Objectives</b>	Davanagere District Soil Map Preparation.
<b>Data Used</b>	Taluk Boundary, Distict Boundary, Soil Data.
<b>Data Process</b>	Prepare Map of Soil by GIS application
<b>Type of Data Provided</b>	PDF and JPEG Map ( <b>Map-7</b> )

# SOIL MAP DAVANAGERE DISTRICT



**Map 7 : Soil Map Of Davanagere District.**

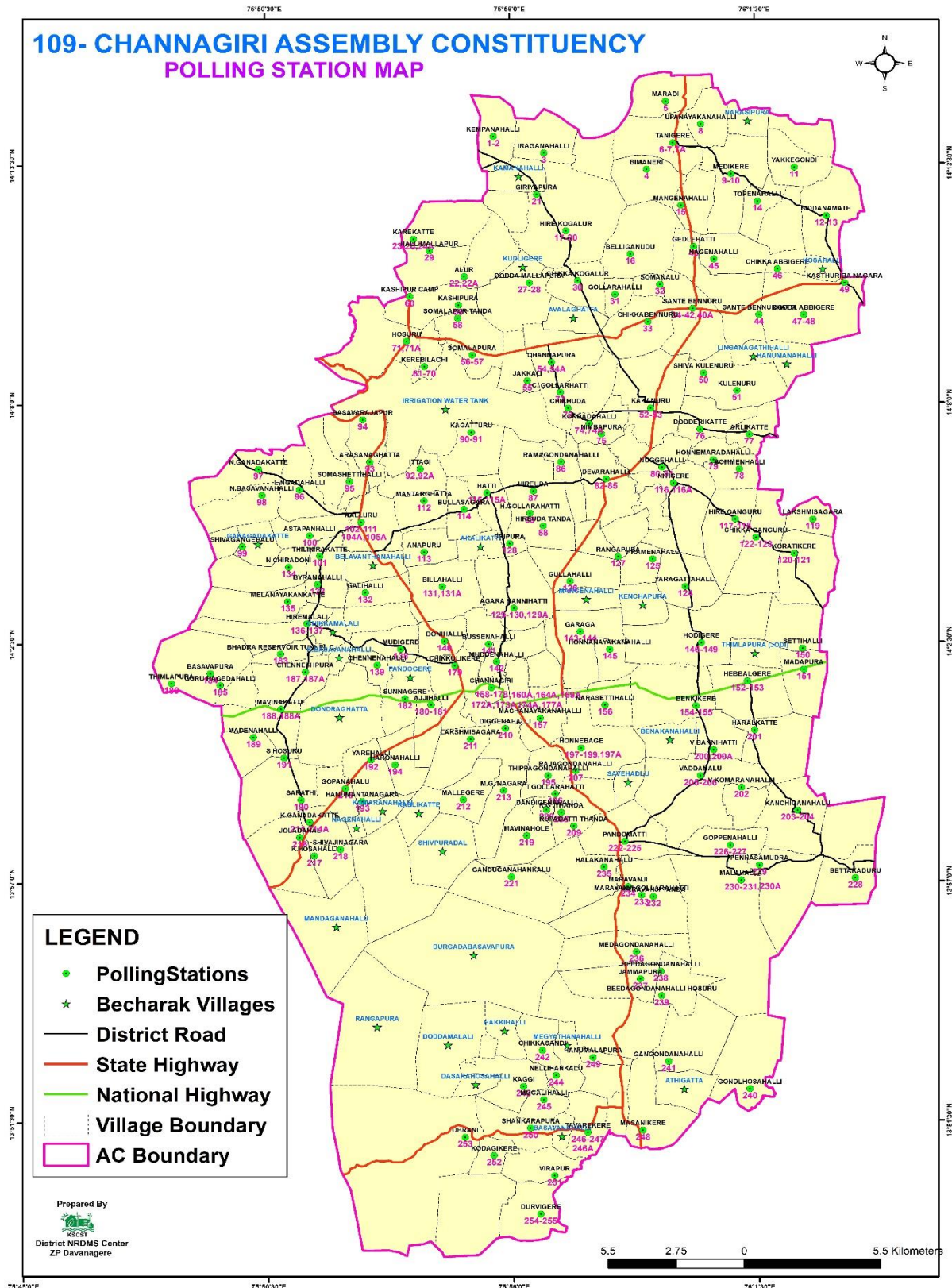
**Activity: 4**

<b>Title of work</b>	Assembly Constituency Polling Station Rationalization Map prepare and send to Taluk Office
<b>Department Name</b>	Department of Revenue, Davanagere
<b>Objectives</b>	Davanagere District all Assembly Constituency PS Rationalization Map Preparation.
<b>Data Used</b>	District Boundary, Taluk Boundary, Assembly Boundary, PS Location, other information by department.
<b>Data Process</b>	Rationalize PS number provided by department was joined to PS Location data (.shp) and Using GIS application map was generated and provided to department.
<b>Type of Data Provided</b>	PDF and JPEG Maps <b>(Map-8 &amp; 12)</b>

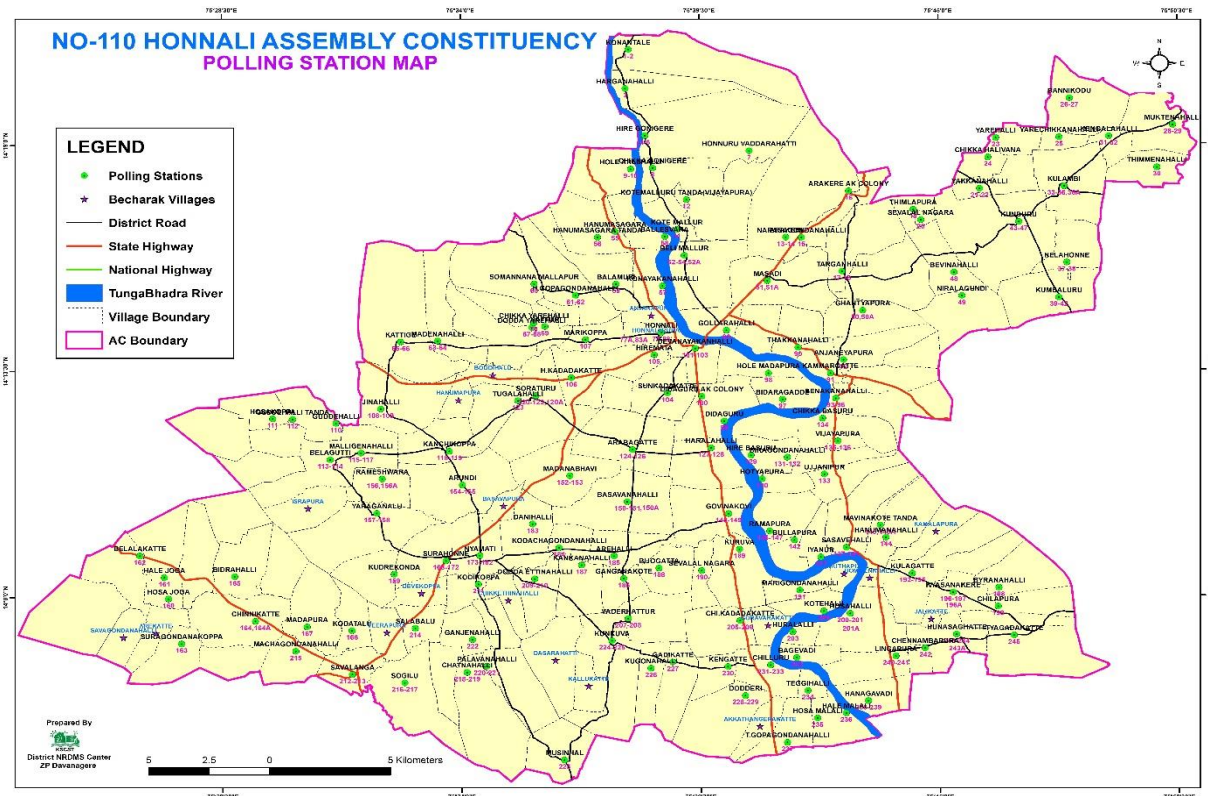


**Map 8 : 108 Mayakonda(SC) Assembly Constituency Map Davanagere District.**

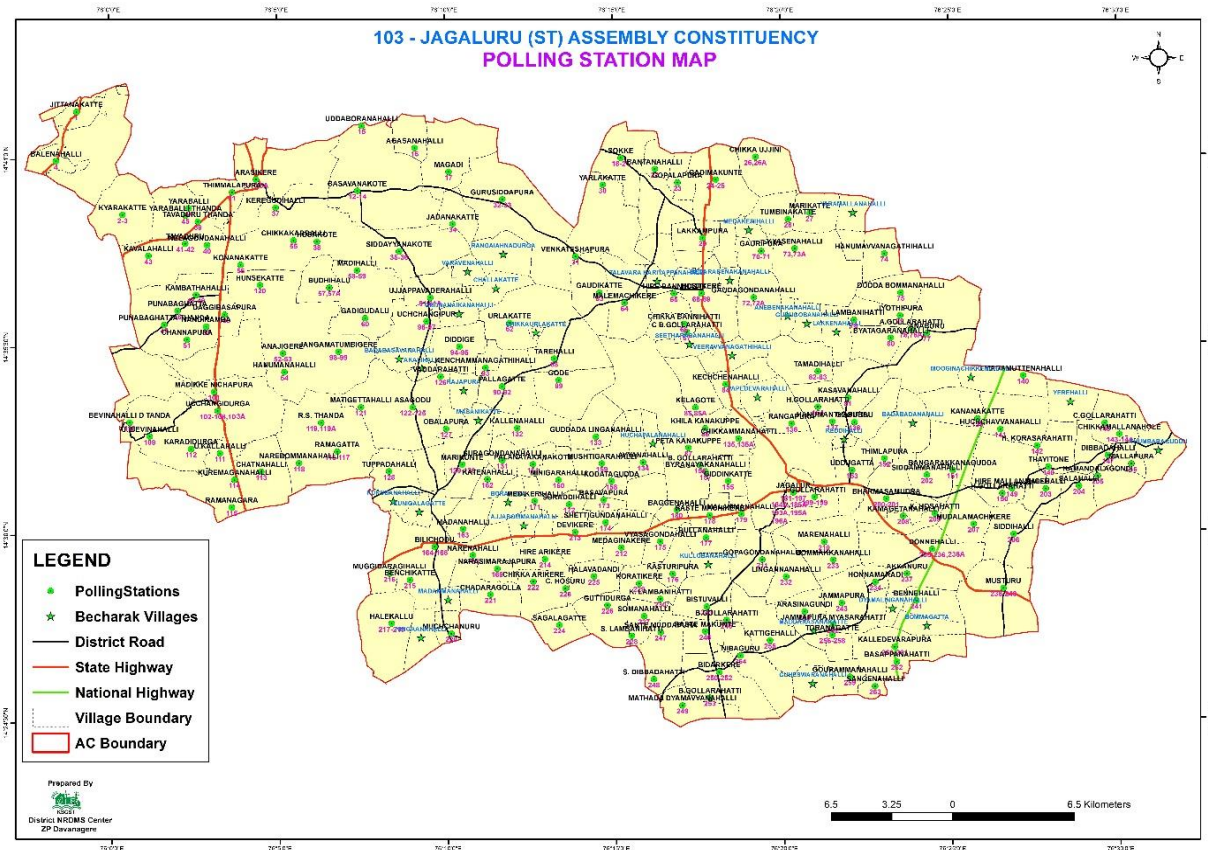




**Map 9 : 109 Channagiri Assembly Constituency Map Davanagere District.**



Map 10 : 110 Honnali Assembly Constituency Map Davanagere District.



Map 11 : 103 Jagalur (ST) Assembly Constituency Map Davanagere District.

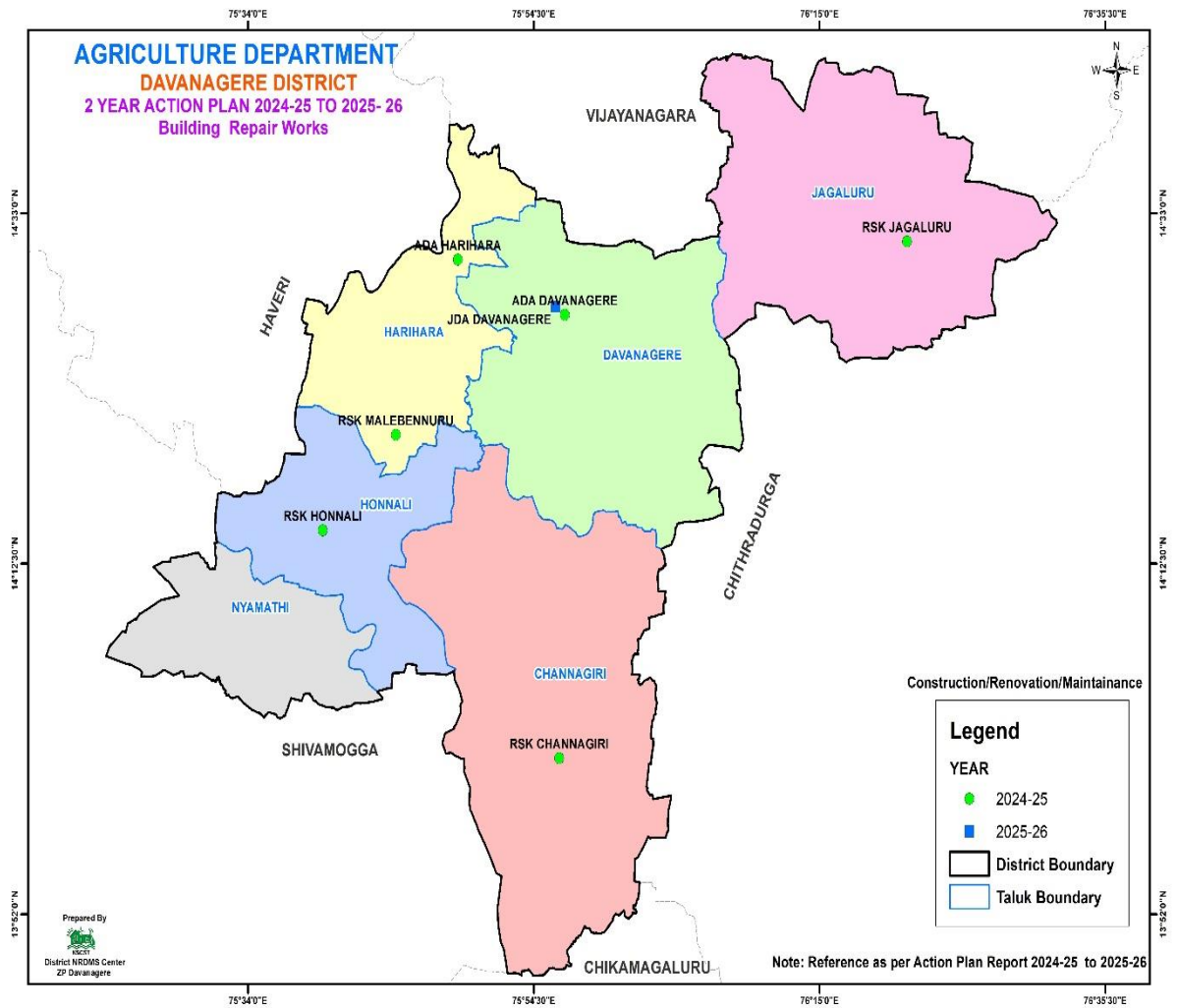




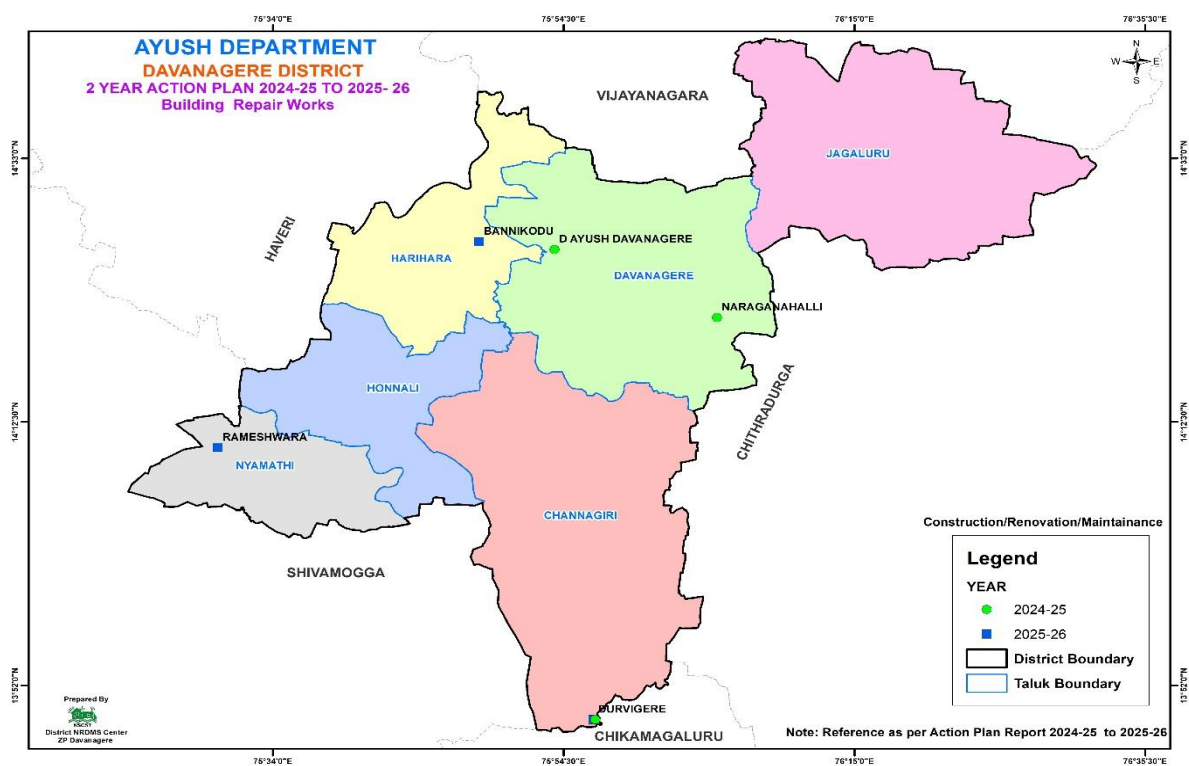
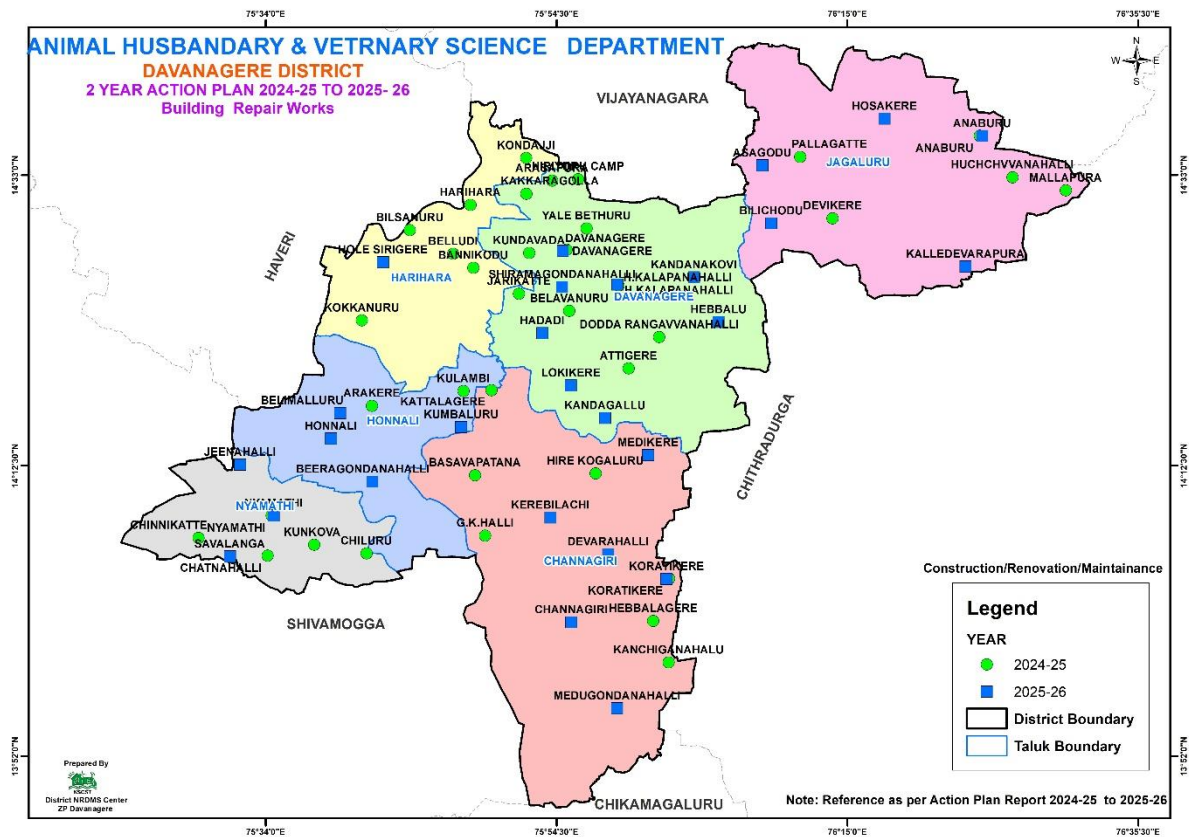
**Map 12 : 105 Harihara Assembly Constituency Map Davanagere District.**

### Activity: 5

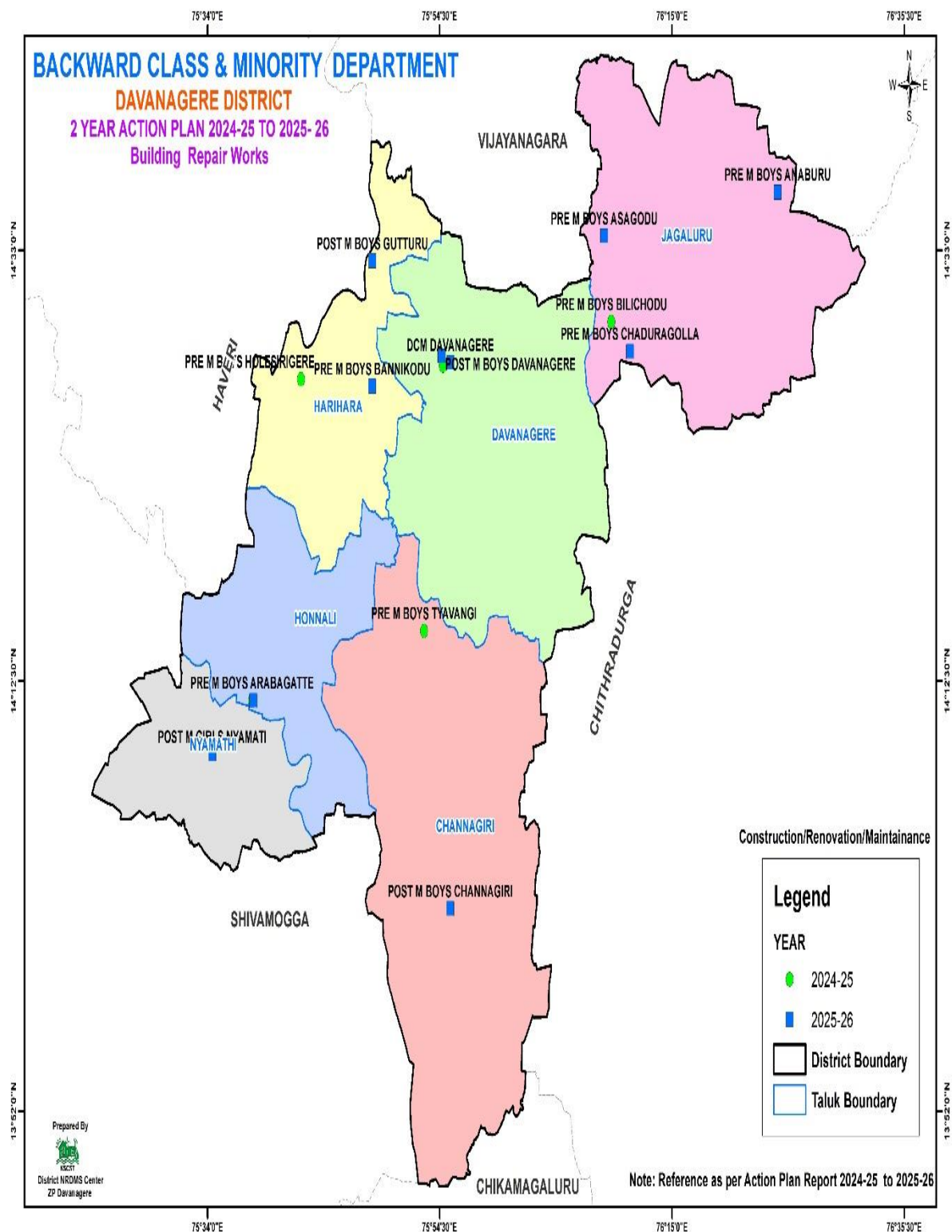
<b>Title of work</b>	Action Plan and Draft Plan Maps
<b>Department Name</b>	Zilla Panchayath Office, Davanagere
<b>Objectives</b>	prepare the Maps for 2026-2027 Financial year Draft Plan Meeting.
<b>Data Used</b>	Taluk Boundary, Hobli, Village Boundary, Road Network, Village Locations, GP Location and Waterbodies Data, Department Details
<b>Data Process</b>	Using all Data's Next FY works Map Prepared and send to CPO
<b>Type of Data Provided</b>	PDF and JPEG Maps ( <b>Map-13 to 21</b> )



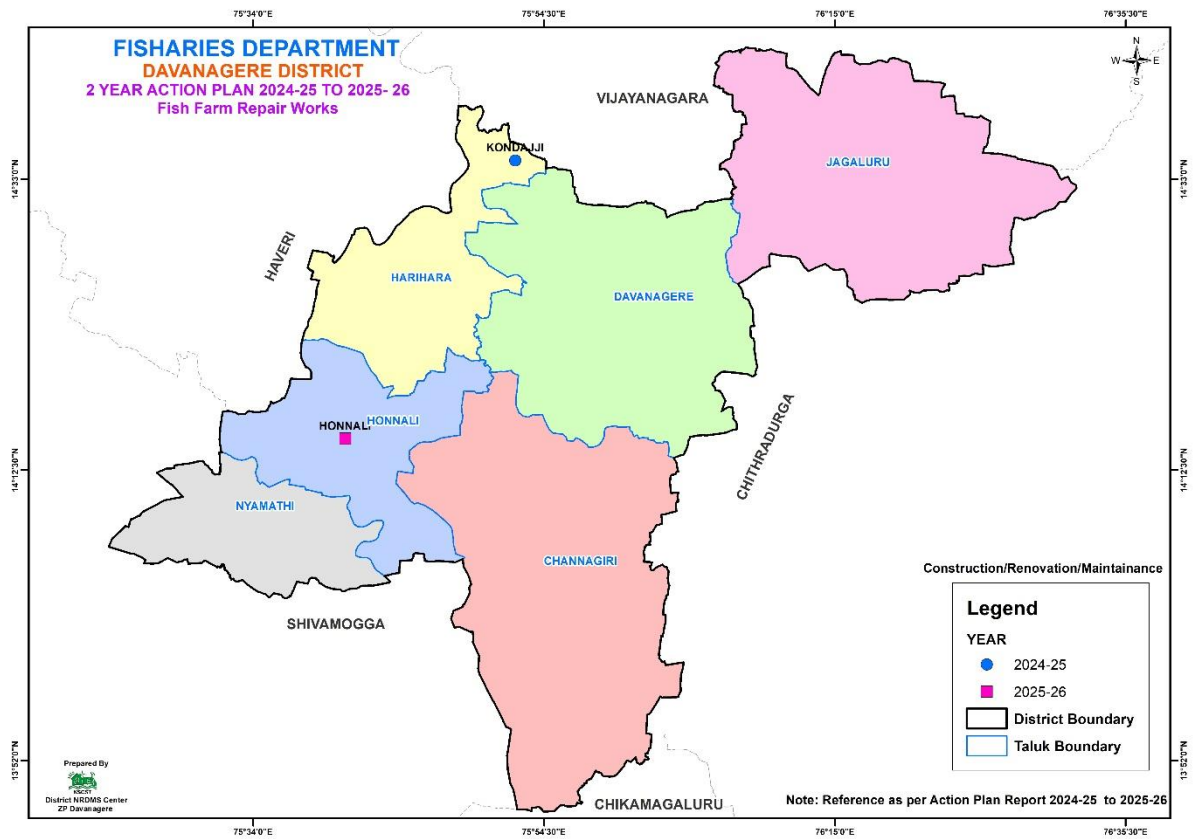
**Map 13 : Agriculture Department Map.**



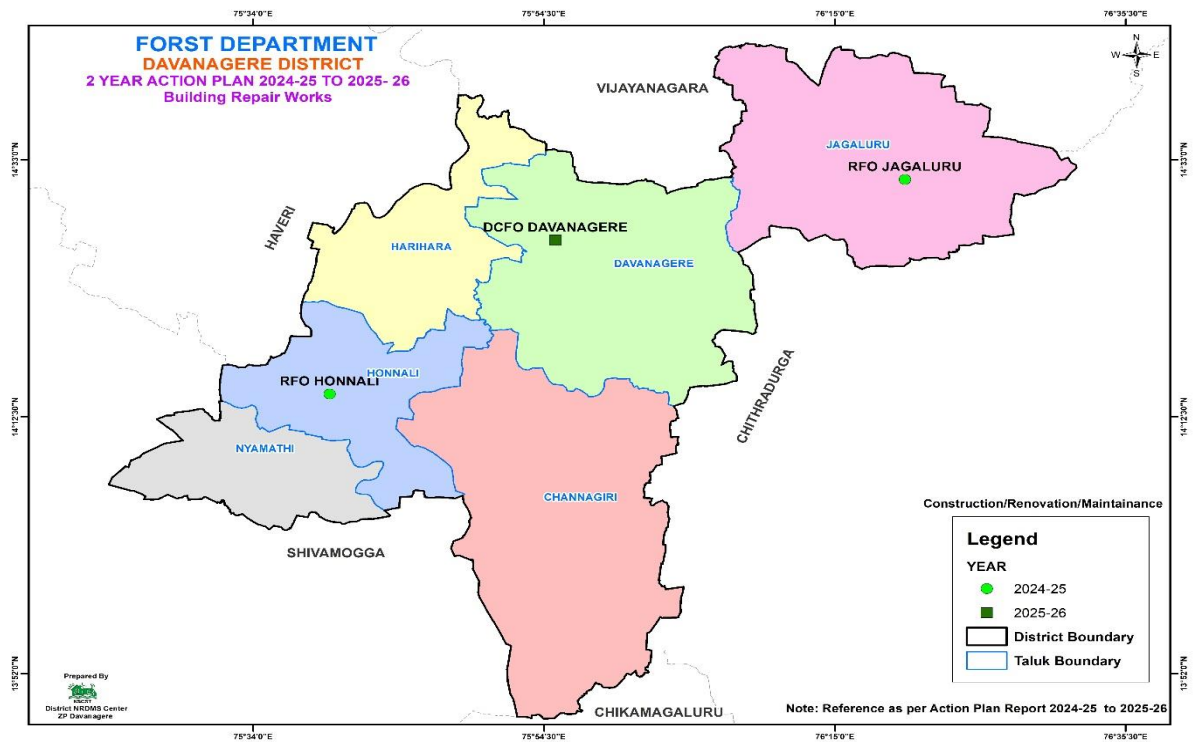




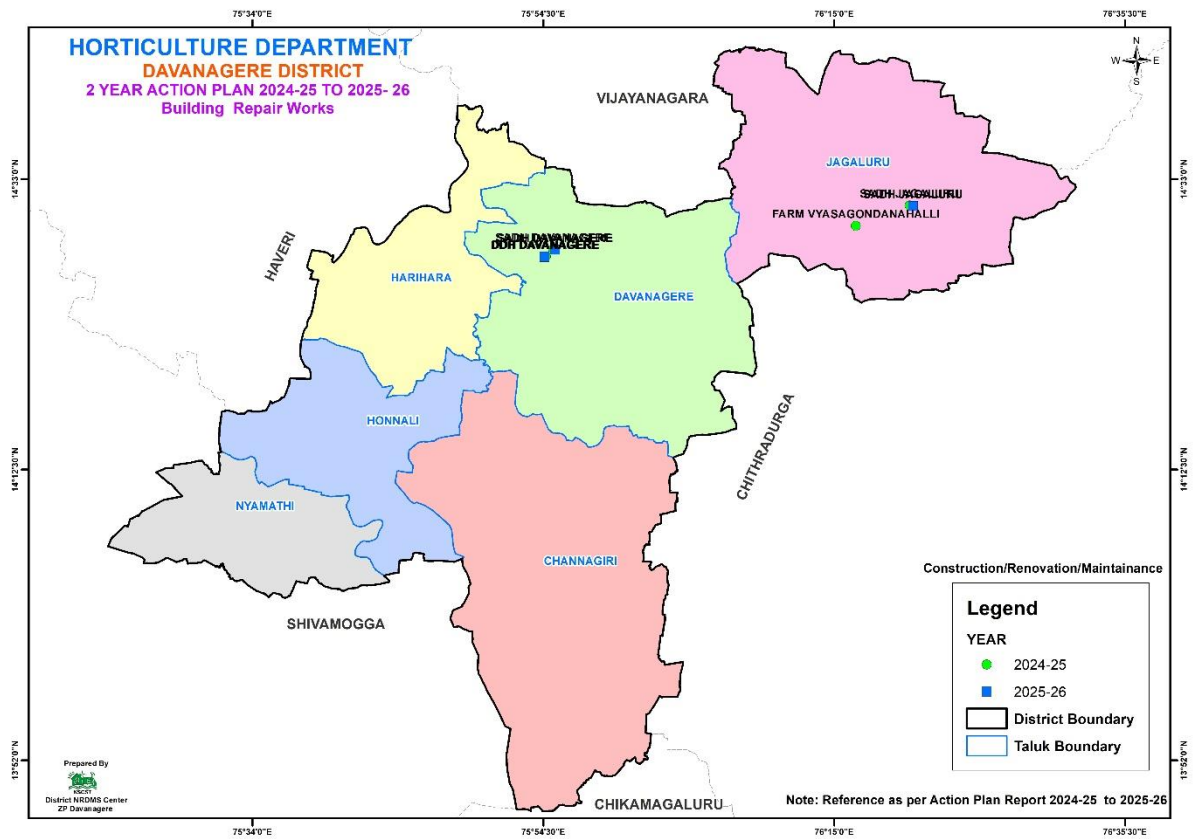
**Map 16 : Backward Class and Minority Department Map.**



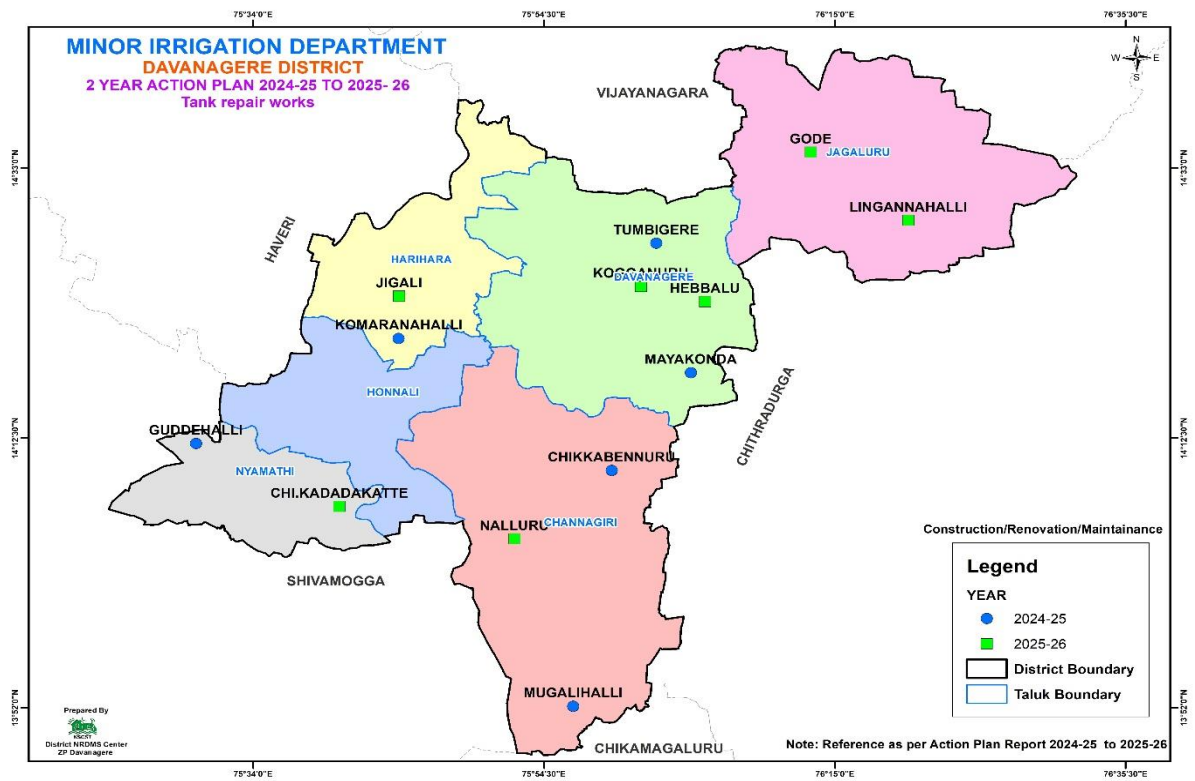
**Map 17 : Fishery Department Map.**



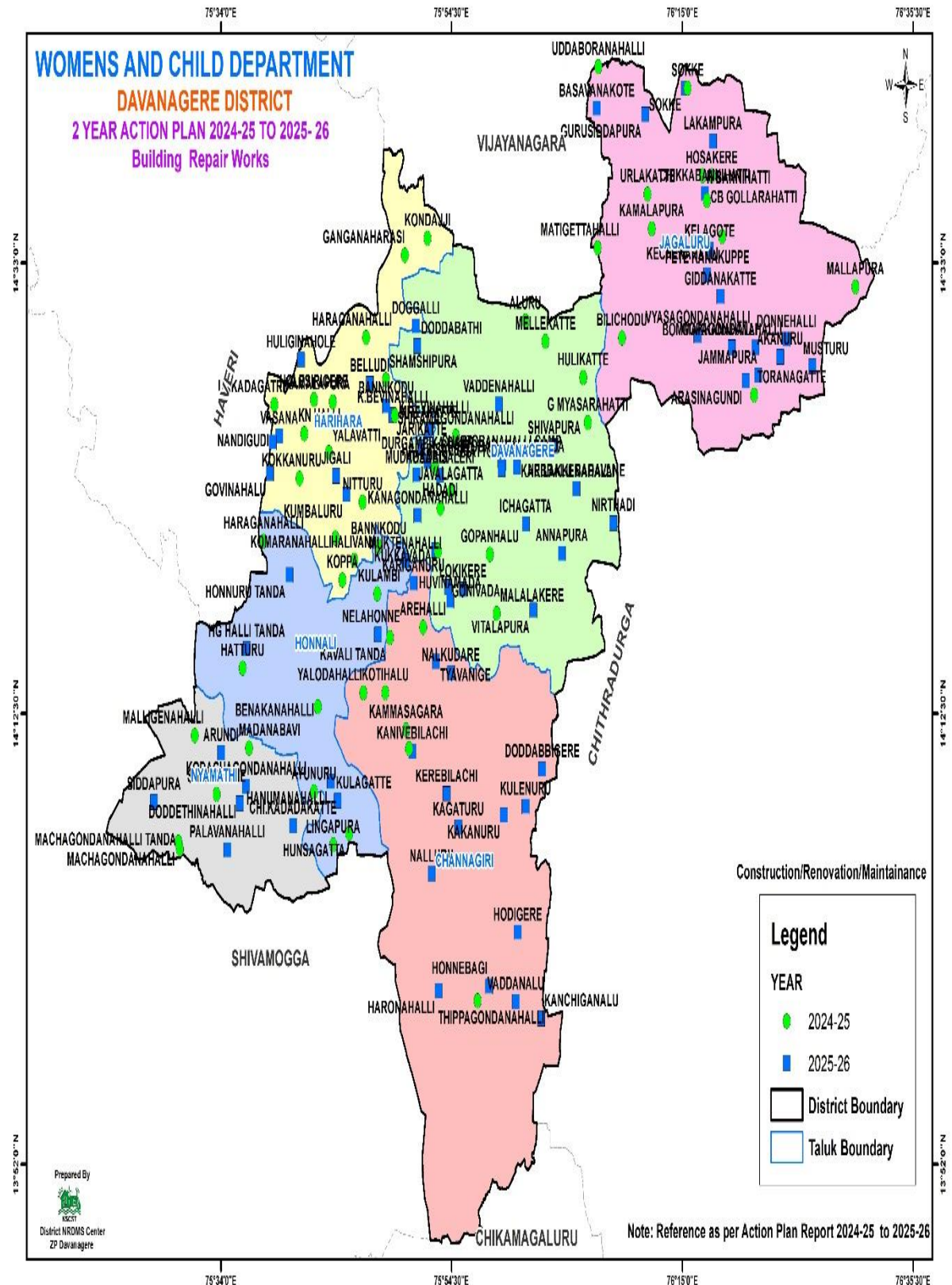
**Map 18 : Forest Department Map.**



**Map 19 : Horticulture Department Map.**



**Map 20 : Minor Irrigation Department Map.**



**Map 21 : Women and Child Department Map.**

## **2. Training Programmes Attended**

1. Attend New Geo MGNREGA Application, Structural Geotagging, Geo-fencing app Training held at SIRD, Mysore on 11-08-2025 and 12-08-2025.

## **3. Training Imparted to Line Department**

1. Given Training as a Resource person to All District DMIS, TC and TAE regarding New Geo MGNREGA Application, Structural Geotagging, Geo-fencing, Training held at SIRD, Mysore
2. Given Training as a Resource person to Bengaluru and Mysore Division District ADPC, DMIS, TC and TAE regarding Yukthadhara application under MGNREGA, Training held at SIRD, Mysore.
3. Given Training as a Resource person to all Taluk Line Department Officers, PDO's, TC, TAE, DEO, GKM and BFT regarding Yukthadhara application under MGNREGA.

## **4. Science Outreach Activities**

No Science Outreach Activities were conducted during this period.

## **5. Conclusion**

### **A) Summary of Activities Under Take.**

During this period district NRDMS center, ZP Davanagere provided various Maps, data and report to Zilla Panchayat Office, Deputy Commissioner Office, Police Department and various line department, pertaining to implementation of various activities and assist district administration in disaster management.

### **B) Commitment to Improve NRDMS Activities.**

District NRDMS Centre ZP Davanagere is committed to provide quality and scientific assistance to department for implementation of developmental activities in district.

District NRDMS center is also committed to update the existing data base as up to date to enhance its performance and to assist the departments.

Centre is also committed to learn and update ourself to latest GEO SPATIAL technology and other software to improve our efficiency.



## 6. Annexures

### List of Maps:

**Map 1:** Davanagere District During Monsoon 2025 Ground Water Fluctuation Map.

**Map 2:** Davanagere District Pre Monsoon 2025 Ground Water Fluctuation Map.

**Map 3:** Asthapanahalli Village, Channagiri Taluk, Davanagere Distirct.

**Map 4:** Places of Asthapanahalli Village, Channagiri Taluk, Davanagere Distirct.

**Map 5:** Image of Asthapanahalli Village, Channagiri Taluk, Davanagere Distirct.

**Map 6:** LULC of Asthapanahalli Village, Channagiri Taluk, Davanagere Distirct.

**Map 7 :** Soil Map Of Davanagere District.

**Map 8 :** 108 Mayakonda(SC) Assembly Constituency Map Davanagere District.

**Map 9 :** 109 Channagiri Assembly Constituency Map Davanagere District.

**Map 10 :** 110 Honnali Assembly Constituency Map Davanagere District.

**Map 11 :** 103 Jagaluru (ST) Assembly Constituency Map Davanagere District.

**Map 12 :** 105 Harihara Assembly Constituency Map Davanagere District.

**Map 13 :** Agriculture Department Map.

**Map 14 :** Animal Husbandry and Veterinary Science Department Map.

**Map 15 :** Ayush Department Map.

**Map 16 :** Backward Class and Minority Department Map.

**Map 17 :** Fishery Department Map.

**Map 18 :** Forest Department Map.

**Map 19 :** Horticulture Department Map.

**Map 20 :** Minor Irrigation Department Map.

**Map 21 :** Women and Child Department Map.