

***NATURAL RESOURCES DATA  
MANAGEMENT SYSTEM  
(NRDMS)***

***MONTHLY ACTIVITY REPORT  
April - July 2025***

***Submitted by  
District NRDMS Centre  
Zilla Panchayat,  
Davanagere***



***Submitted to  
Karnataka State Council for  
Science and Technology (KSCST)  
Indian Institute of Science Campus,  
Bengaluru – 560012***

<b>SL No</b>	<b>Headings</b>	<b>Page Num</b>
<b>1</b>	<b>Basic Information of Davanagere District</b>	<b>1</b>
<b>2</b>	<b>Background of District NRDMS Centre, Davanagere</b>	<b>1</b>
<b>3</b>	<b>Geographical Features</b> <b>A. Location &amp; Boundaries</b> <b>B. Topography</b> <b>C. Climate</b> <b>D. Natural Resource</b> <b>E. Major Rivers/Water Resource</b>	<b>1-4</b>
<b>4</b>	<b>Spatial &amp; Non-Spatial Data</b> <b>A. Spatial Database</b> <b>B. Non-Spatial Database</b> <b>C. Hardware &amp; Software Inventory for the Year 2025-26</b>	<b>5-12</b>
<b>5</b>	<b>Major Activities Carried Out during the period of April-July 2025</b>	<b>13-28</b>
<b>6</b>	<b>Training Programmes Attended</b>	<b>29</b>
<b>7</b>	<b>Training Imparted to Line Department</b>	<b>29</b>
<b>8</b>	<b>Science Outreach Activities</b>	<b>29</b>
<b>9</b>	<b>Conclusion</b>	<b>29</b>
<b>10</b>	<b>Annexures</b>	<b>30</b>

## 1. Basic Information of Davanagere District

**District Name:** Davanagere

**Division:** Bengaluru

**District Establishment Year:** 1997

**Headquater:** Davanagere Corporation City

**Current CPO :** Mallanaik, Chief Planning Officer, Zilla Panchayat, Davanagere.

**Current CEO:** Gitte Madav Vittalrao, IAS, Chief Executive Officer, ZP Office, Davanagere.

## 2. Background of District NRDMS Centre, Davanagere

NRDMS programme aims to analyze the evolution of methodologies and techniques for formulating development strategies. In a scenario of large diversity of data sets, data users and data generating agencies, the programme aims at developing and demonstrating the use of spatial decision support tools for integrated planning and management of resources at the local level.

Davanagere district was new district Formed out Three Taluk from Chitradurga district, Two Taluk from Shivamogga District and One Taluk from Bellary District in the year 1997 and District NRDMS Centre was established in the year 2007-08 at Zilla Panchayat Office. District NRDMS Centre is been actively involved in providing Geospatial support to Zilla Panchayat office, District administration, Police Department and All other line departments of the districts for better planning and execution of development work.

## 3. Geographical Features

### A. Location & Boundaries

Davanagere district is located in Middle parts of Karnataka and situated in between north latitudes of 13° 45' and 14°36' and east longitudes of 75°26' and 76°26'. It is bounded by Chitradurga on east, Vijayanagar district on north, Haveri district on West and Shivamogga and Chikkamagaluru district in the South. Location Map of Davanagere district is Shown in below **Map-1**.

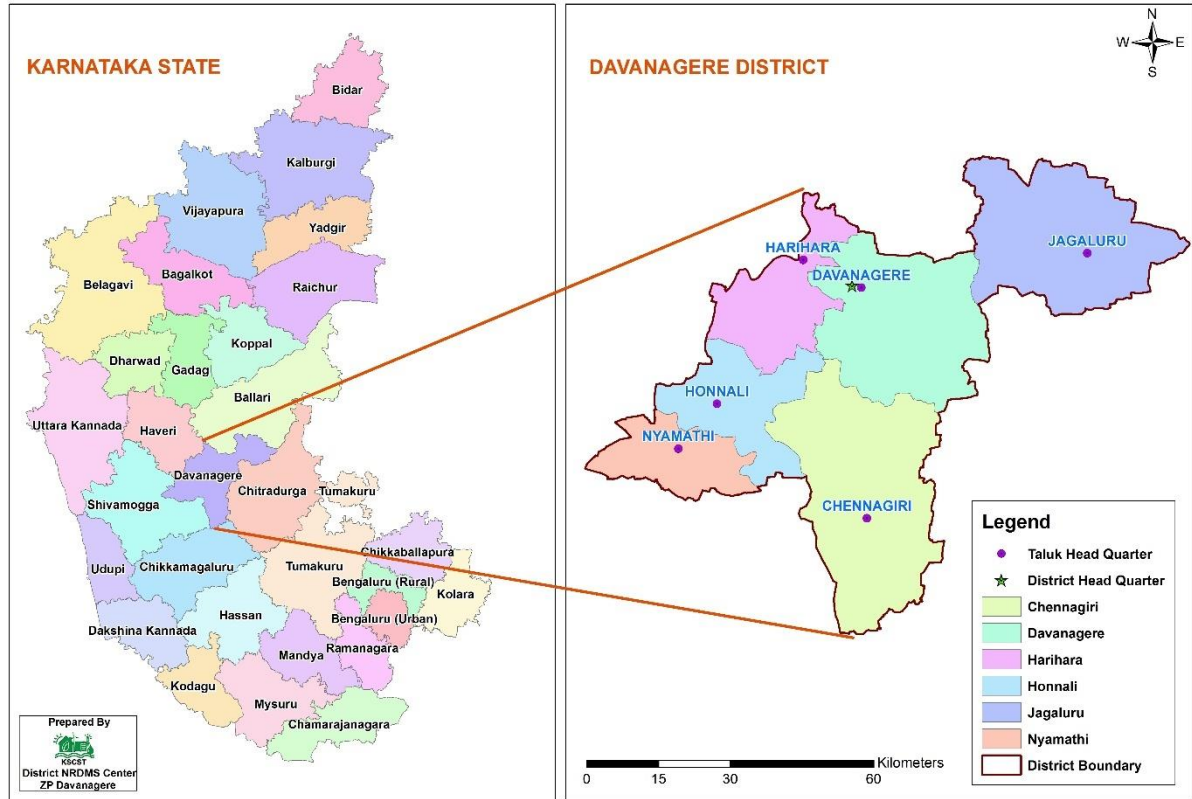
For administrative convenience Davanagere district has been divided into 6 taluks with 856 Villages. Davanagere district consists of 22 Hoblies, 7 Urban Local bodies and 194 Gram Panchayats. The details are given below in **Table-1**.

**Table - 1 showing administrative details of Davanagere district.**

SL No	Taluk	No of Villages	No of Hoblis	No of GP's	No of ULB's
1	Davanagere	167	5	42	1

2	Harihara	85	2	23	2
3	Channagiri	249	6	61	1
4	Honnali	98	4	29	1
5	Jagaluru	178	3	22	1
6	Nyamathi	79	2	17	1
<b>Grand Total</b>		<b>856</b>	<b>22</b>	<b>194</b>	<b>7</b>

### LOCATION MAP OF DAVANAGERE DISTRICT



**Map 1: Location map of Davanagere District.**

### **B. Topography**

Davanagere District, located in the Middle part of Karnataka, India, lies on the Deccan Plateau with an elevation range of 500 to 920 meters above mean sea level, averaging around 620 meters. The district's topography is characterized by flat to gently undulating terrain, with the Foot Hill of Sayadri Range hills, known for their Elephant Corridor. The River Tungabhadra Passes in the District, which influence its landscape and drainage patterns. Red soil predominates across the district, supporting agriculture, though patches of Black soil are also present.

### **C. Climate**

Davanagere District experiences a semi-arid to moderate climate typical of the Deccan Plateau, characterized by distinct seasonal variations. Below is the overview of the climate:

## **Temperature**

Maximum: Up to 39°C during peak summer months (April and May).

Minimum: Around 18°C in winter, particularly in December and January.

Average annual temperature ranges between 20°C and 33°C.

## **Rainfall**

Average annual rainfall is approximately 659 mm.

Most precipitation occurs during the southwest monsoon (June to September) and, to a lesser extent, the northeast monsoon (October to November).

The district lies in a rain-shadow region, resulting in relatively low rainfall compared to Western Ghat of Karnataka. Seasons of Davanagere district is explained as below.

**Summer (March to May):** Hot and dry, with temperatures often exceeding 38°C.

**Monsoon (June to September):** Moderate rainfall, with the southwest monsoon bringing the bulk of the precipitation.

**Winter (December to February):** Cool and pleasant, with temperatures dropping to 16–20°C at night.

**Humidity and Wind:** Humidity levels are moderate, higher during the monsoon season (60–80%) and lower in summer (20–40%).

The district experiences consistent winds, particularly in elevated areas like the Melebennuru and Ubrani hills, making it suitable for wind energy generation.

## **D. Natural Resource**

Davanagere District possesses a variety of natural resources that support its economy, particularly agriculture, and contribute to its ecological and industrial landscape. Below is a overview of the key natural resources in Davanagere District:

### **Soil Resources:**

**Red Sandy Soil:** Predominant across the district, this fertile soil is ideal for crops like Arecanut and Maize which are major agricultural outputs.

**Black Soil:** Found in patches, particularly in areas like Jagluru and Nymathi Taluk, this soil supports certain crops and influences local farming practices.

### **Water Resources**

**Rivers:** The Tungabhadra River Passes in the District are used for irrigation and water supply. The rivers support agriculture and provide water for domestic use.

**Reservoirs and Tanks:** The Shanthi Sagara Lake (Sulekere) second largest lake of Asia is situated at Channagiri Taluk and Devarabelakere reservoir used for irrigation,

Santhebennuru Pushkarini and numerous historic stepwells and tanks, District Covered by Three Command Areas, One is Bhadra Command Area, Tunga Command Area and third is Upper Tunga Command Area facilitate irrigation and groundwater recharge.

**Groundwater:** Available in Good to moderate quantities, though overexploitation in some areas has led to concerns about sustainability.

### **Mineral Resources**

Iron Ore: Small deposits are present, though not extensively mined compared to other Karnataka districts like Vijayanagara and Bellary.

### **Forest Resources**

Forests cover approximately 13% of the district's 5921.23 sq. km area, primarily consisting of shrub and dry deciduous forests. The Rangayyanadurga Hills are a Four horned antelope (Kondukuri) Wild Life Sanctuary hotspot, In Ubrani Area the Teak wood Trees are grown well, which are a valuable resource. Timber and non-timber forest products, such as fodder and fuelwood, support rural livelihoods.

### **Agricultural Resources**

The district's fertile soils and water resources enable the cultivation of crops like Paddy, Maize and Arecanut, Coconut and Sugarcane are Commercial crops, some pulses and Vegetable are grown.

Horticulture crops, including mangoes, Pomegranate, Guava are grown in smaller quantities, supported by the region's climate.

### **Renewable Energy Potential**

In Davanagere District Jagaluru and Nyamathi taluk is a hub for wind energy and solar Energy, with numerous windmills installed due to favorable wind conditions on the Deccan Plateau. The district hosts one of India's largest wind energy farms, contributing to renewable energy production.

## **E. Major Rivers/Water Resource**

Davanagere district relies on a combination of rivers, reservoirs, and other water sources for its water supply, primarily for agriculture, drinking, and industrial purposes. Below is a detailed overview of the major rivers, reservoirs, and water sources in Davanagere district,

### **Tungabhadra River:**

The Tungabhadra River, a major tributary of the Krishna River, Passes in the Middle of the district and flows along the West boundary of Davanagere district. It is formed by the confluence of the Tunga and Bhadra rivers in Shimoga district and flows through parts of Karnataka and Andhra Pradesh.

District Covered by Three Command Areas, one is Bhadra Command Area, Tunga Command Area and third is Upper Tunga Command Area facilitate irrigation and supports irrigation in Honnali, Nyamathi, Devanagari, Harihara and Channagiri Taluk of the district through canal systems and reservoirs. The Tunga Dam located in Gajanuru, Shivamogga District and Bhadra Dam located in Lakkavalli Chikkamagluru District. The Shanthi Sagara Lake (Sulekere) second largest lake of Asia is situated at Channagiri Taluk and Devarabelakere reservoir used for irrigation.

Apart from above mentioned water source Davanagere district is also mainly depended on Ground water for domestic, agriculture and industrial uses.

#### 4. Spatial & Non-Spatial Data

##### Status Code : Meaning

CC :	Computerised.
ND :	Not Digitized
NA :	Not Procured
NR :	Not Relevant
NF :	Not Finalised

##### A. Spatial Database

Sector / Subsector	Scale	Source	Survey / Publn. Year	Area covered	Status Code	File Format
<b>1. Natural Resources</b>						
<b><i>Land</i></b>						
1. Topography						
Contour Map	5 and 10 Mtr	ASTER DEM		District	CC	.Shp
Slope Map	1:50,000	KSRSAC		District	CC	.Shp
2. Geology – A						
Rock features	1:50,000	KSRSAC		District	CC	.Shp

Structural features	1:50,000	KRSRAC		District	CC	.Shp
3. Geology – B						
Rock features		NA				
Structural features		NA				
4. Mineral Resources	1:50,000	KRSRAC		District	CC	.Shp
5. Geomorphology	1:50,000	KRSRAC		District	CC	.Shp
6. Land use	1:50,000 1:10000	KRSRAC		District	CC	.Shp
7. Waste Lands	1:50,000	KRSRAC				
8. Soils	1:25,000	NBSS & LUP		District	CC	.Shp
9. Forest & Wildlife						
Forest type	1:50,000	KFD		District	CC	.Shp
Forest Density	1:50,000	KFD		District	CC	.Shp
Forest Category	1:50,000	KFD		District	CC	.Shp
Forest admn.	1:50,000	KFD		District	CC	.Shp
Wild Life		NA				
<b>Water</b>						
1.Ground water						
Ground water Prospectus	1:50,000	KRSRAC		District	CC	.Shp
Hydro chemistry		NA				
Ground water budget		NA				
2.Surface water						
Drainage	1:50,000 1:10000	SOI		District	CC	.Shp
Surface water bodies	1:50,000 1:10000	SOI & KRSRAC		District	CC	.Shp



<b>3.Climate</b>		NA				
Telemetric Rain gauge station	1:50,000	KSNDMC		District	CC	.Shp

Sector / Subsector	Scale	Source	Survey / Publn. Year	Area covere d	Status Code	File Format
<b>2.Demography</b>						
<b>Population</b>						
Tehsil boundary	1:50,000	SOI		District	CC	.Shp
District boundary	1:50,000	SOI		District	CC	.Shp
Current popln. distbn.	1:50,000	SOI		District	CC	.Shp
<b>Literacy</b>						
Levels of education		NA				
<b>Occupation</b>						
Village boundary	1:50,000	SOI		District	CC	.Shp
<b>Employment</b>						
District scenario		NA				
Employment exchange		NA				
<b>Assets &amp; Expenditure</b>		NA				
<b>Migration</b>		NA				
<b>Destitutes</b>		NA				

<b>3.Socio Economy</b>						<b>File Forma t</b>
<b>Industry</b>		NA				
<b>Developmental activity</b>		NA				
<b>4.Agro Economy</b>						

<b>Land Utilisation</b>						
Private Land		NA				
Common property		NA				
<b>Land Ownership pattern</b>						
General scenario		NA				
Farmer's holdings		NA				
<b>Principal crops</b>		NA				
<b>Irrigation</b>						
<i>Minor irrigation</i>						
Canals	1:50,000	DLR & SS (KSRSAC)	District	CC	.Shp	
Tube wells		NA				
Dug wells		NA				
Tanks	1:50,000	DLR & SS (KSRSAC)	District	CC	.Shp	
Lift irrigation		NA				
<i>Major irrigation</i>						
Reservoirs	1:50,000	DLR & SS(KSRSAC)	District	CC	.Shp	
Anicuts		NA				
<b>Agricultural implements</b>						
<b>Animal husbandry</b>	1:50,000	AHVS	District	CC	.Shp	
<b>Pisciculture</b>		NA				
<b>Plantation</b>		NA				

Sector / Subsector	Scale	Source	Survey / Publn. Year	Area covered	Status Code	File Format
<b>5.Infrastructure</b>						

<b>Communications</b>						
Post offices	1:50,000	Dept of Posts	District	CC	.Shp	
Telecommunication		NA				
<b>Drinking water</b>		NA				
<b>Educational facilities</b>	1:50,000	DDPI	District	CC	.Shp	
<b>Electricity</b>						
<b>Financial institutions</b>		NA				
<b>Markets</b>		NA				
<b>Health</b>	1:50,000	DHO	District	CC	.Shp	
<b>NGO's</b>		NA				
<b>Tourism</b>	1:50,000	KSTDC	District	CC	.Shp	
<b>Transport</b>	1:50,000	PWD & SOI	District	CC	.Shp	
<b>6.Miscellaneous</b>						
District map with taluks	1:50,000	SOI	District	CC	.Shp	
District & taluk boundaries	1:50,000	SOI	District	CC	.Shp	
District map with hoblies	1:50,000	DLR & SS	District	CC	.Shp	
Village boundary with settlement	1:50,000	SOI/KSR AC	District	CC	.Shp	
Police station details	1:50,000	SP	District	CC	.Shp	
Details on Assembly constituencies	1:50,000	DC	District	CC	.Shp	
Gram Panchayhs & Zilla Panchayaths, its jurisdiction for all taluks	1:50,000	DC	District	CC	.Shp	

Additional Data

Cadastral Boundary	1:7780	SSLR & KRSAC	District	CC	.Shp	
Agro Climate	1:50000	NBSS & LUP	District	CC	.Shp	

## B. Non-Spatial Database

Sector / Subsector	Source	Survey / Publn. Year	Area covered	Status Code	File Format
<b>1. Natural Resources</b>					
<b><i>Land</i></b>					
1. Topography					
Contour				NR	
Slope				NR	
2. Geology – A					
Rock Features	MGD			NR	
Structural features				NR	
3. Geology – B					
Rock features				NR	
Structural features				NR	
4. Mineral Resources	MGD			NR	
5. Geomorphology				NR	
6. Land use				NR	
7. Waste Lands				NR	
8. Soils	NBSS & LUP			NR	
9. Forest & Wildlife					
Forest type				NR	
Crown Density				NR	
Forest Category				NR	
Forest admn.				NR	
Wild Life				NR	
<b><i>Water</i></b>					
Ground water					
Hydro Geology	MGD			NR	
Hydro chemistry	CGWB			NR	

Ground water budget	MGD			NR	
Surface water					
Drainage				NR	
Surface water bodies				NR	
<b>Climate</b>	IMD			NR	

<b>2. Demography</b>					<b>File Format</b>
<b>Population</b>					
Tehsil boundary	DLR & SS			CC	XLS
District boundary				CC	XLS
Current popln. distbn.	DES			CC	XLS
<b>Literacy</b>					<b>File Format</b>
Levels of education				NA	
<b>Occupation</b>					
Village boundary	DES			NA	
<b>Employment</b>					
District scenatio	EO			NA	
Employment exchange	EO			NA	
<b>Assets &amp; Expenditure</b>					
<b>Migration</b>					
<b>Destitutes</b>					

<b>3. Socio Economy</b>					<b>File Format</b>
<b>Industry</b>	DIC			NA	
<b>Developmental activity</b>	DIC			NA	

4. Agro Economy					File Format
<b>Land Utilisation</b>					
Private Land	DSO		VILLAGE	NA	
Common property	DSO			NA	
<b>Land Ownership pattern</b>					
General scenario	DSO			NA	
Farmer's holdings	Rev. Dept			NA	
<b>Principal crops</b>	JDA		Taluk	NA	
<b>Irrigation</b>					
<i>Minor irrigation</i>					
Canals	CADA			NA	
Tube wells	DSO			NA	
Dug wells	DSO			NA	
Tanks	MIC/ ZPE			NA	
Lift irrigation	MID			NA	
<i>Major irrigation</i>					
Reservoirs	CE (N)			NA	
Anicuts	CE (N)			NA	
<b>Agricultural implements</b>	Ag Census			NA	
<b>Animal husbandry</b>	AH&VS			NA	
<b>Pisciculture</b>	Fisheries			NA	
<b>Plantation</b>				NA	
<b>Horticulture</b>	HD			NA	
<b>Sericulture</b>	SD			NA	

Sector / Subsector	Source	Survey / Publn. Year	Area covered	Status Code	File Format
<b>5. Infrastructure</b>					

<b>Communications</b>					
Post offices	SSPO/ DES		Village	NA	
Telecommunication	TDM / DES			NA	
<b>Drinking water</b>	ZPE			NA	
<b>Educational facilities</b>	DDPI			NA	
<b>Electricity</b>	Census			NA	
<b>Financial institutions</b>	LEAD bank			NA	
<b>Markets</b>	FACS			NA	
<b>Health</b>	DHO			CC	XLS
<b>NGO's</b>	DRS			NA	
<b>Tourism</b>	KSTDC			CC	XLS
<b>Transport</b>					
Roads	PWD			NA	
Rail network	ZPED			NA	
Air transport/HELIPAD	PWD			NA	
Vehicle census	RTO			NA	
Inland & coastal waterways				NA	
<b>Veterinary services</b>					
Veterinary facilities	AHVS			CC	XLS
Other veterinary serv.	AHVS				
Incidence of diseases	AHVS				
Anganwadi	D W&C			CC	XLS

<b>Sector / Subsector</b>	<b>Source</b>	<b>Survey / Publn. Year</b>	<b>Area covered</b>	<b>Status Code</b>	<b>File Format</b>
---------------------------	---------------	-----------------------------	---------------------	--------------------	--------------------



<b>6. Miscellaneous</b>					
Administration	DC office				
Dt. & Subdivsns.	DC office			NA	
Dt., with tehsils	ZP			NA	
Dt., with panchayat	DC			NA	
Tq., with census vil.	DC			NA	
Prices & wages				NA	
Environment				NA	

### **C. Hardware & Software Inventory for The Year 2025-26**

- Hardware:**

**HP Pro Desk Top Intel Core i5, 8GB RAM, 1 TB Hard Disk**

**HP All in One Desktop: Intel Core i5, 16GB RAM, 1 TB SSD**

**DELL Laptop: Intel Core i5, 16GB RAM, 1 TB SSD**

**EPSON A3 L1800 Inkjet Colour Printer.**

**1 TB External Hard disk (Defunct)**

- Software:**

**ARCMAP-10.8**

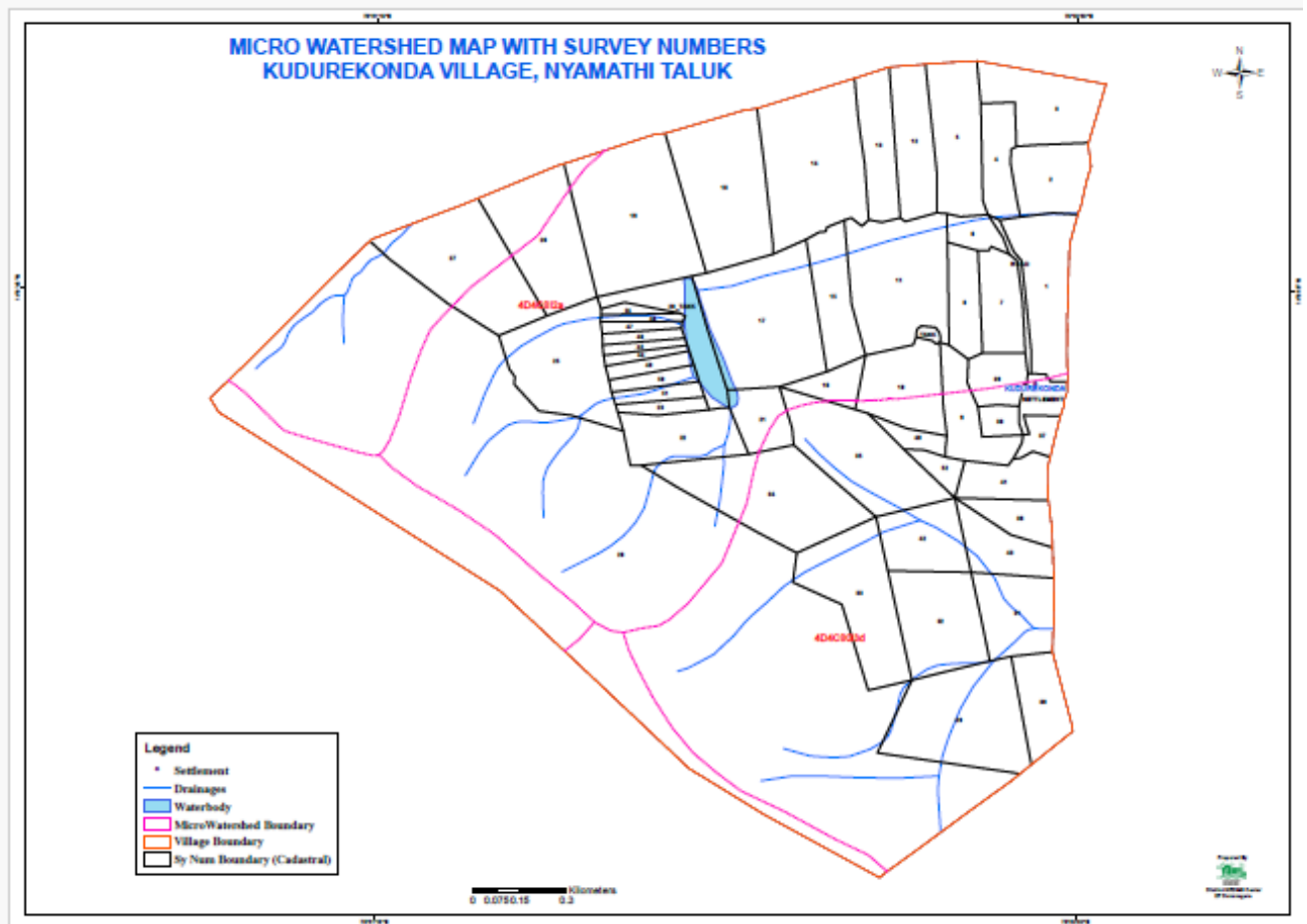
**QGIS 4.**

**Windows 11 Home.**

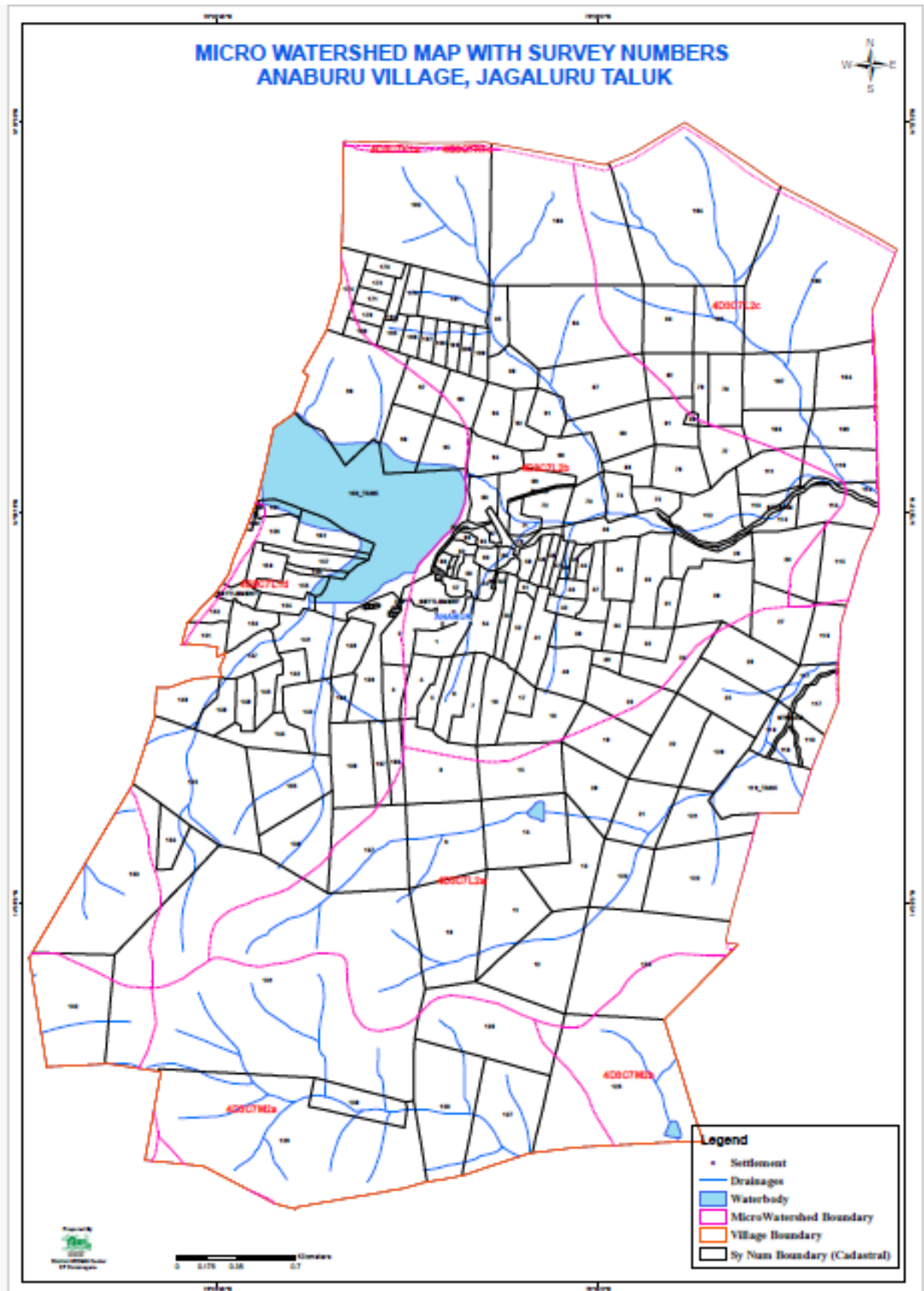
## 5. Major Activities Carried Out during the period of April-July 2025

### Activity: 1

<b>Title of work</b>	Watershed Maps for Krishi Kavacha Programme.
<b>Department Name</b>	Joint Director Agriculture Office, Davanagere
<b>Objectives</b>	As Request by JD Agriculture Davanagere 42 Watershed area of the district selected for Development Under Krishi Kavacha 2025 Programme. The officer Need a detailed Map with Survey Numbers. The selected Watershed area maps and with survey number was prepared and submitted.
<b>Data Used</b>	Drainage line, Micro Watershed Boundary, Village Boundary, Cadastral Boundary, Habitation.
<b>Data Process</b>	Extracted various maps based on Micro Watershed Boundary, were generated and village wise survey number. extracted using clip option and provided to Joint Director Agriculture Office, Davanagere
<b>Type of Data Provided</b>	PDF and JPEG Maps ( <b>Map-2 &amp; 3</b> ) Showing Village Wise Survey number.



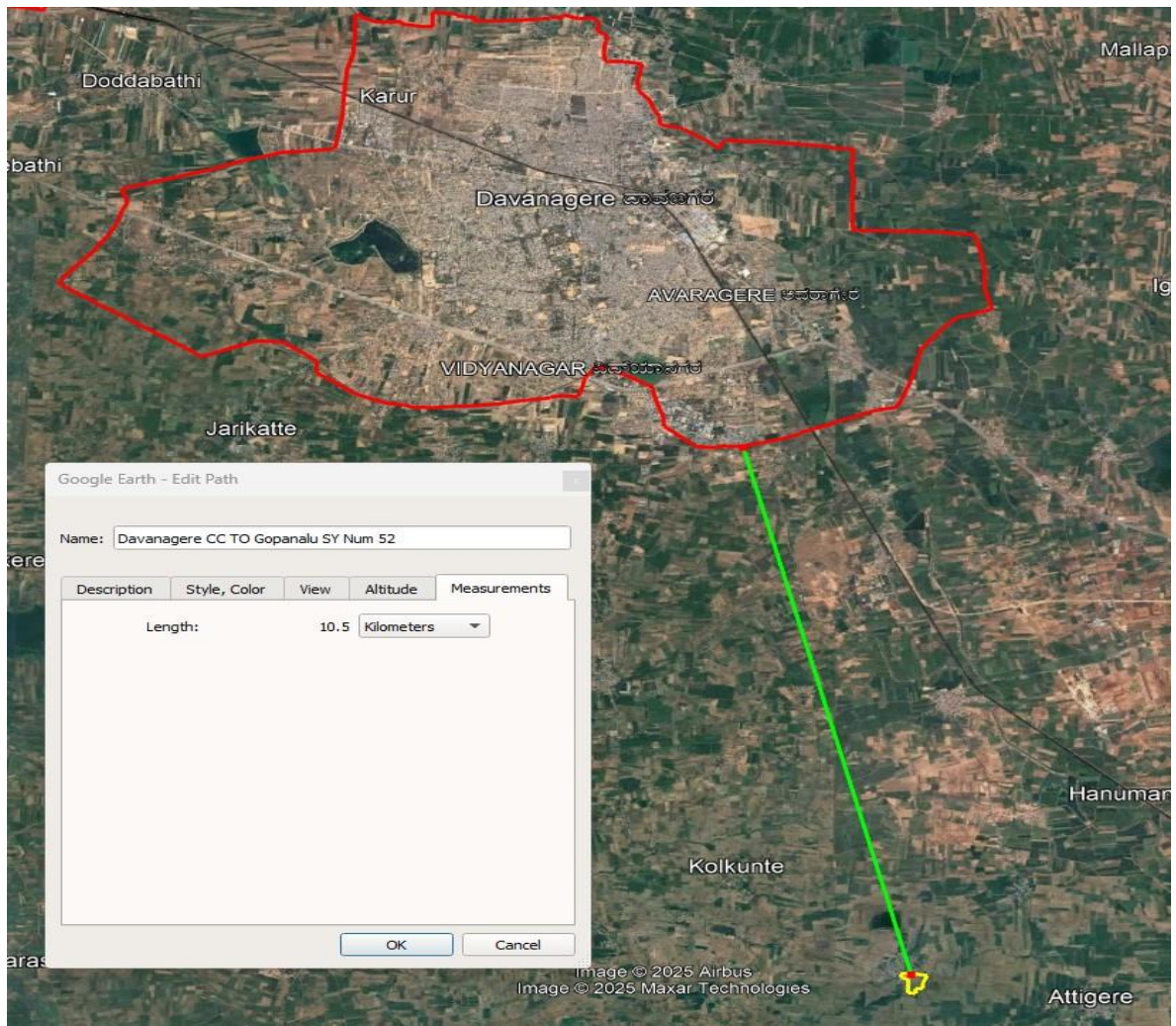
**Map 2: Kudrekonda Village Watershed and RS Map**



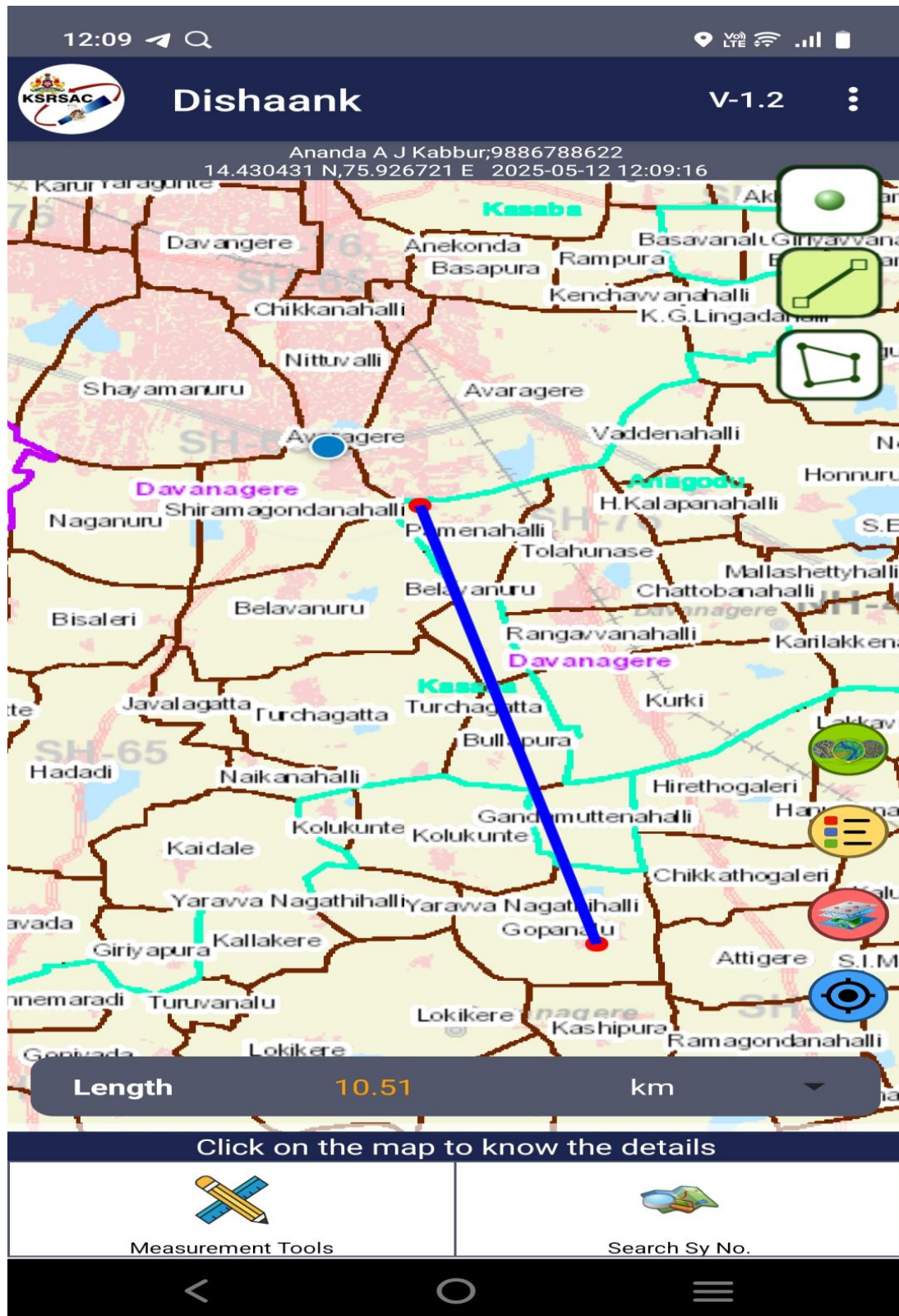
**Map 3: Anaburu Village Watershed and RS Map**

**Activity -2**

<b>Title of work</b>	Map Showing Aerial distance (google) of survey number 52, Gopanahalu village, Davanagere Taluk.
<b>Department Name</b>	Taluk Office Davanagere.
<b>Objectives</b>	Find Out the Aerial distance from Corporation, CMC, TMC, and TP.
<b>Data Used</b>	Village Boundary, Town Boundary, Survey Number Boundary and Village Location.
<b>Data Process</b>	To submit the Maps and Report to Karnataka Land Grabbing Prohibition Special Courts, Bengaluru, Using Google earth Map and Dishank Application find the Distance from Each Urban (Town) Area and prepare the Maps.
<b>Type of Data Provided</b>	PDF and JPEG Maps <b>(Map-4 to 8)</b>

**Map 4: Aerial Distance from Davanagere Corporation Boundary to SY 52, Gopanalu****Village, Davanagere Taluk Google Image Map.**

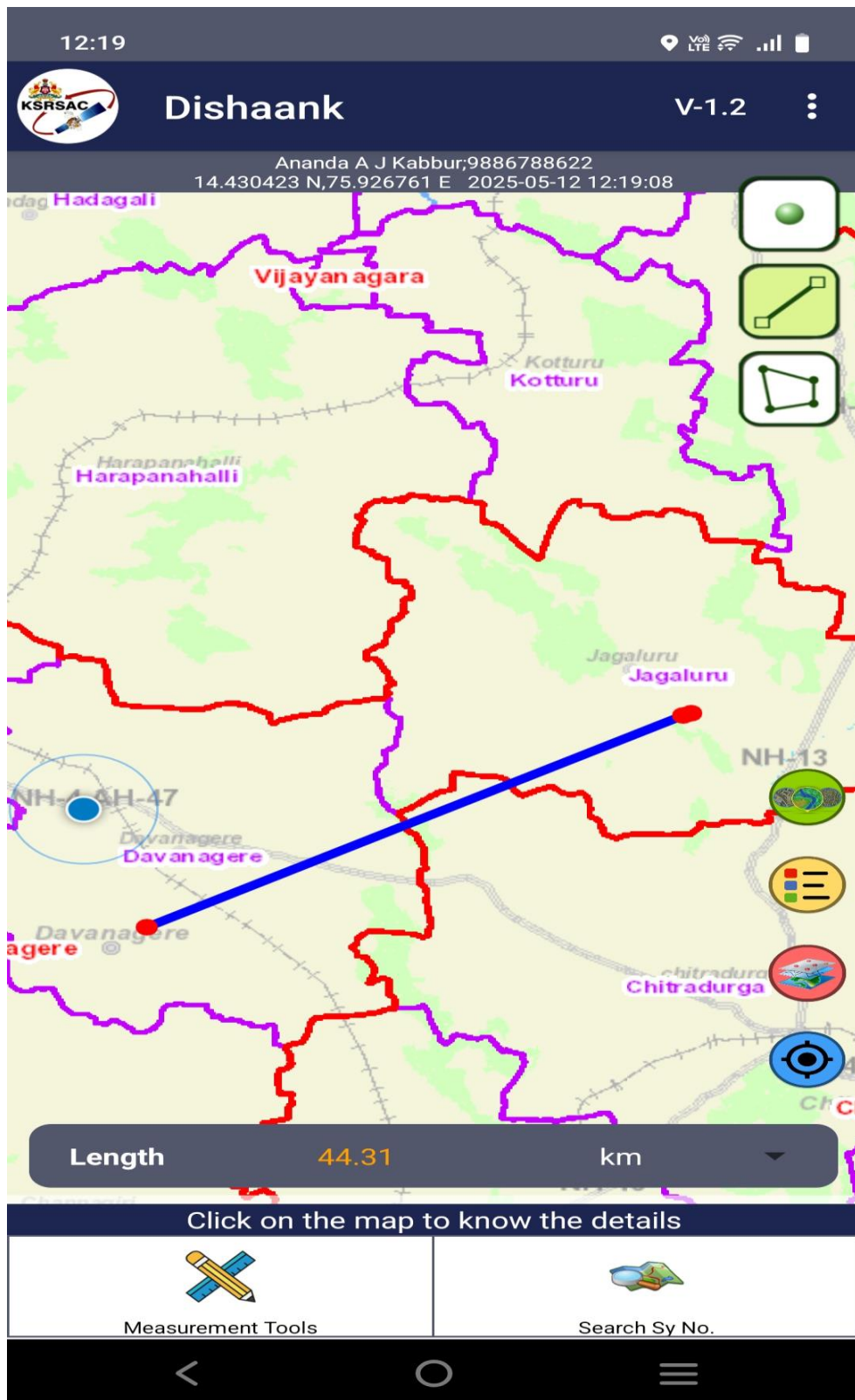




**Map 5: Areail Distance from Davanagere Corporation Boundary to SY 52, Gopanal Village, Davanagere Taluk Dishaank Map.**

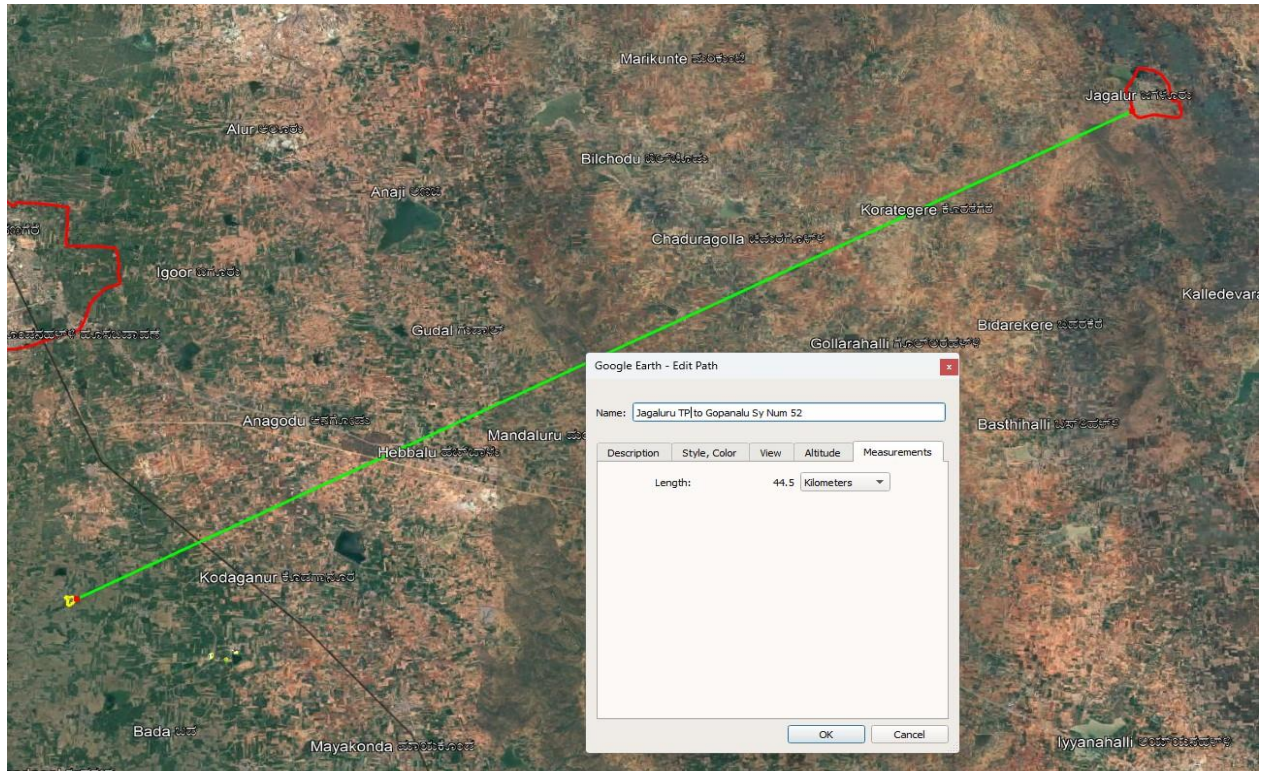


Map 6: SY 52, Gopanaluvillage, Davanagere Taluk Dishaank Map.





**Map 7: Areail Distance from Jagaluru Town Panchayath Boundary to SY 52, Gopanaluvillage, Davanagere Taluk Dishaank Map.**

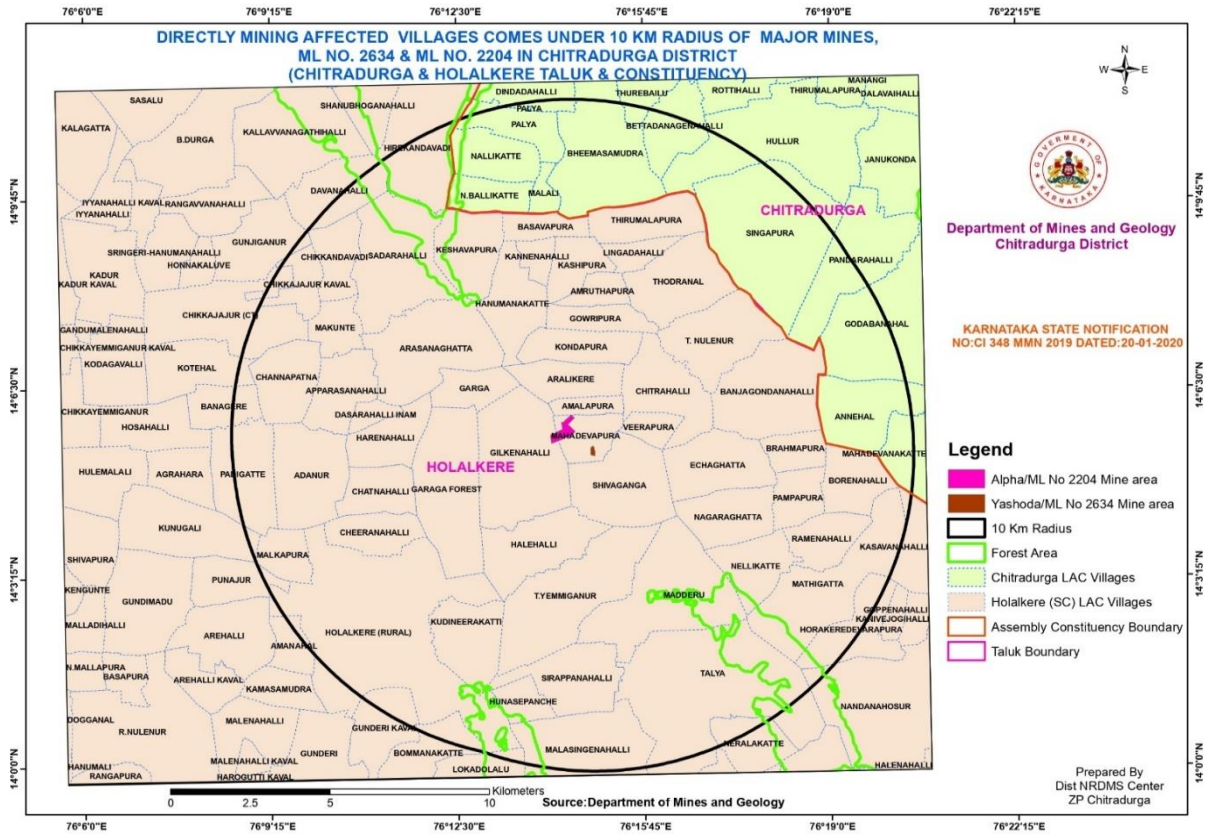


**Map 8: Areail Distance from Jagaluru Town Panchayath Boundary to SY 52, Gopanaluvillage, Davanagere Taluk Google Image Map.**

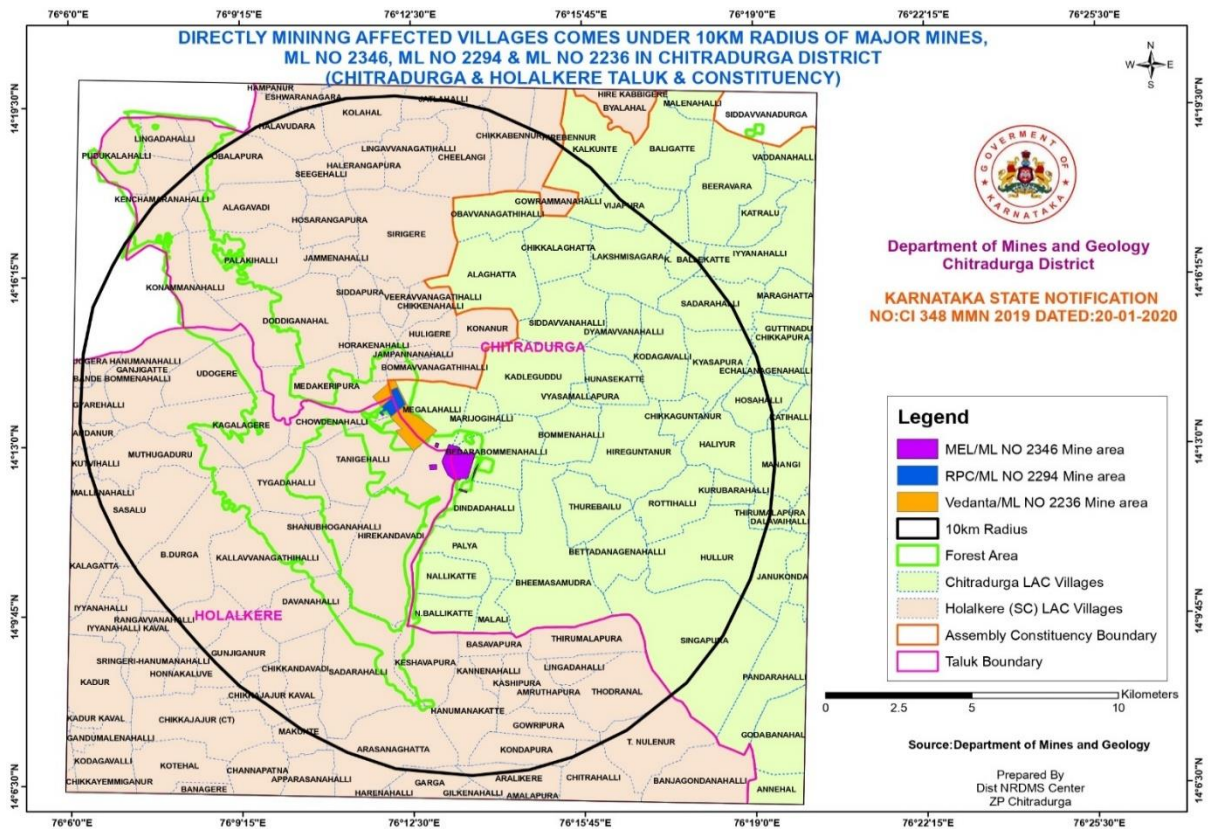
### Activity -3

<b>Title of work</b>	Location Map of Villages affected by Mines (10 KM Buffer) in Chitradurga District
<b>Department Name</b>	Mines and Geology Department and Zilla Panchayat, Chitradurga
<b>Objectives</b>	Location Map and List of Villages (With in 10 Km Range of Mine area) which were affected by Mining activity was prepared and provided to DD, DMG and Chief Executive Officer, Zilla Panchayat, Chitradurga. As this data was required for effective implementation of District Mineral Fund (DMF) effectively.
<b>Data Used</b>	Taluk Boundary, Village Location, Mine Location (Provided by DMG, Chitradurga ) and 10 KM Buffer of Mine Location.
<b>Data Process</b>	10 KM Buffer was generated for mine location using Geoprocessing toll, and Village falling under 10 KM jurisdiction was extracted using clip option
<b>Type of Data Provided</b>	PDF and JPEG Map ( <b>Map-9 &amp;10</b> ) was provided along with list of Villages was provided in Excel format. ( <b>Table-2</b> )





Map 9 : Directly Mining affected Villages of Chtradurga and Holalkere Taluk Map.



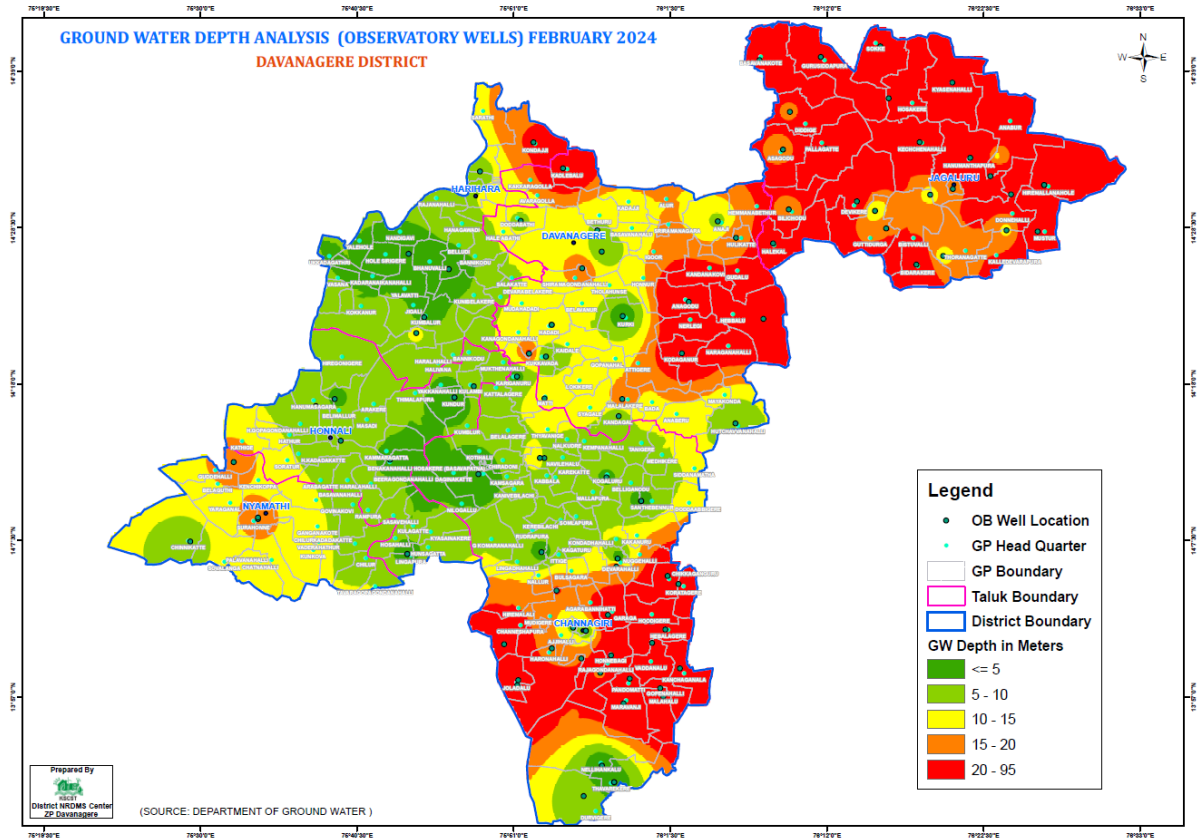
Map 10 : Directly Mining affected Villages of Chtradurga and Holalkere Taluk Map.

**Table 2 : Villages List affected by Mines (10 KM from Mining Area)**

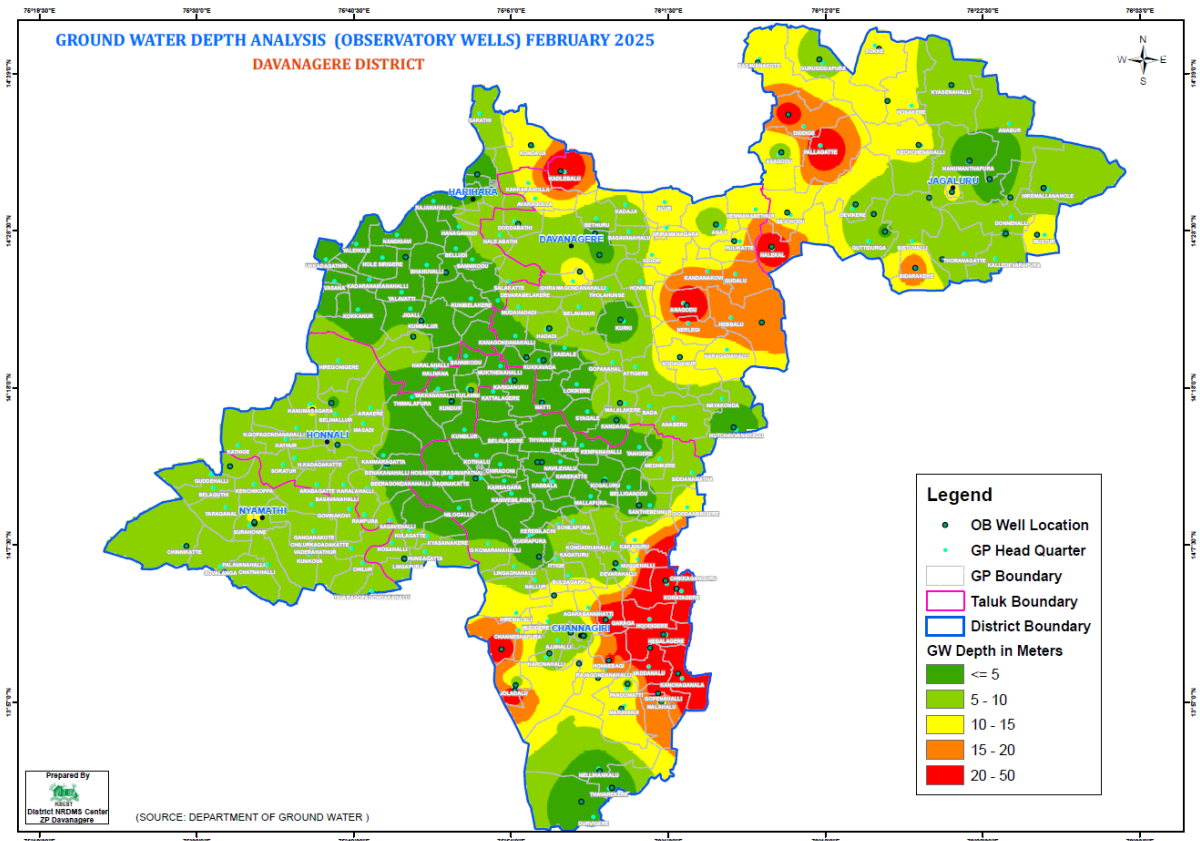
Directly Mining affected Villages Comes Under 10KM Radius of Major Mines, ML No 2346, ML No 2294 , ML No 2236, ML No. 2634 & ML No. 2204 in Chitradurga District (Chitradurga & Holalkere Taluk & Constituency)																				
Sl.No	DIST NAME	TALUK NAME	LAC NAME	HOBILI NAME	GP NAME	VILLAGE NAME	AREA (Hectares)	NO_HH	TOT_P	TOT_M	TOT_F	P_06	M_06	F_06	P_SC	M_SC	F_SC	P_ST	M_ST	F_ST
1	CHITRADURGA	CHITRADURGA	CHITRADURGA	HIREGUNTANUR	ALAGHATTA	ALAGHATTA	790	302	1393	710	683	114	55	59	309	157	152	117	53	64
2	CHITRADURGA	CHITRADURGA	CHITRADURGA	HIREGUNTANUR	ALAGHATTA	CHIKKALAGHATTA	445	207	1008	519	489	92	46	46	318	168	150	165	78	87
3	CHITRADURGA	CHITRADURGA	CHITRADURGA	HIREGUNTANUR	ALAGHATTA	DYAMAVANAHALLI	248	23	126	68	58	15	6	9	0	0	0	22	12	10
4	CHITRADURGA	CHITRADURGA	CHITRADURGA	HIREGUNTANUR	ALAGHATTA	OBADVANAGATHIHALLI	410	252	1185	592	593	130	61	69	302	149	153	156	76	80
5	CHITRADURGA	CHITRADURGA	CHITRADURGA	HIREGUNTANUR	ALAGHATTA	SIDDIVANAHALLI	529	311	1574	801	773	171	84	87	930	468	462	375	196	179
6	CHITRADURGA	CHITRADURGA	CHITRADURGA	HIREGUNTANUR	BHEEMASAMUDRA	BETTADANAGENAHALLI	413	223	989	507	482	127	67	60	598	306	292	182	93	89
7	CHITRADURGA	CHITRADURGA	CHITRADURGA	HIREGUNTANUR	BHEEMASAMUDRA	BHEEMASAMUDRA	1203	266	1131	572	559	102	57	45	101	64	37	136	69	67
8	CHITRADURGA	CHITRADURGA	CHITRADURGA	HIREGUNTANUR	BHEEMASAMUDRA	DINDADAHALLI	508	6	23	12	11	0	0	0	17	9	8	0	0	0
9	CHITRADURGA	CHITRADURGA	CHITRADURGA	HIREGUNTANUR	BHEEMASAMUDRA	MALALI	106	59	353	178	175	71	31	40	302	153	149	45	22	23
10	CHITRADURGA	CHITRADURGA	CHITRADURGA	HIREGUNTANUR	BHEEMASAMUDRA	N.BALLIKATTE	268	33	175	97	78	23	14	9	160	89	71	0	0	0
11	CHITRADURGA	CHITRADURGA	CHITRADURGA	HIREGUNTANUR	BHEEMASAMUDRA	NALLIKATTE	385	117	583	289	294	56	31	25	47	21	26	217	108	109
12	CHITRADURGA	CHITRADURGA	CHITRADURGA	HIREGUNTANUR	BHEEMASAMUDRA	PALYA	350	299	1261	649	612	147	88	59	1098	568	530	65	34	31
13	CHITRADURGA	CHITRADURGA	CHITRADURGA	HIREGUNTANUR	BHEEMASAMUDRA	PALYA	350	299	1261	649	612	147	88	59	1098	568	530	65	34	31
14	CHITRADURGA	CHITRADURGA	CHITRADURGA	HIREGUNTANUR	BHEEMASAMUDRA	THUREBAHALI	356	776	3479	1772	1707	419	237	182	1232	602	630	362	186	176
15	CHITRADURGA	CHITRADURGA	CHITRADURGA	HIREGUNTANUR	BOMMENAHALLY	BEDARABOMMENAHALLI	542	6	23	10	13	6	3	3	4	2	2	6	2	4
16	CHITRADURGA	CHITRADURGA	CHITRADURGA	HIREGUNTANUR	BOMMENAHALLY	BOMMENAHALLY	367	659	3131	1583	1548	361	187	174	519	267	252	1119	559	560
17	CHITRADURGA	CHITRADURGA	CHITRADURGA	HIREGUNTANUR	BOMMENAHALLY	KADLEGUDDU	787	318	1561	801	760	155	90	65	283	137	146	610	314	296
18	CHITRADURGA	CHITRADURGA	CHITRADURGA	HIREGUNTANUR	BOMMENAHALLY	MARIJUGIHALLI	179	0	0	0	0	0	0	0	0	0	0	0	0	0
19	CHITRADURGA	CHITRADURGA	CHITRADURGA	HIREGUNTANUR	BOMMENAHALLY	MEGALAHALLI	530	224	1167	581	586	161	82	79	34	19	15	1115	554	561
20	CHITRADURGA	CHITRADURGA	CHITRADURGA	HIREGUNTANUR	BOMMENAHALLY	VYASAMALLAPURA	58	0	0	0	0	0	0	0	0	0	0	0	0	0
21	CHITRADURGA	CHITRADURGA	CHITRADURGA	HIREGUNTANUR	CHIKKABENURU	KALKUNTE	644	147	746	379	367	81	38	43	168	93	75	492	246	246
22	CHITRADURGA	CHITRADURGA	CHITRADURGA	HIREGUNTANUR	HIREGUNTANUR	CHIKKAGUNTANUR	196	47	191	96	95	21	15	6	77	39	38	0	0	0
23	CHITRADURGA	CHITRADURGA	CHITRADURGA	HIREGUNTANUR	HIREGUNTANUR	HALIVUR	449	362	1573	792	781	157	83	74	629	324	305	433	211	222
24	CHITRADURGA	CHITRADURGA	CHITRADURGA	HIREGUNTANUR	HIREGUNTANUR	HIREGUNTANUR	766	569	2768	1397	1371	312	173	139	442	225	217	367	185	182
25	CHITRADURGA	CHITRADURGA	CHITRADURGA	HIREGUNTANUR	HIREGUNTANUR	HOSAHALLI	406	316	1557	788	769	184	95	89	382	184	198	11	7	4
26	CHITRADURGA	CHITRADURGA	CHITRADURGA	HIREGUNTANUR	HIREGUNTANUR	HUNASEKATTE	346	275	1400	737	663	193	99	94	360	194	166	16	8	8
27	CHITRADURGA	CHITRADURGA	CHITRADURGA	HIREGUNTANUR	HIREGUNTANUR	KODAGAVALLI	487	286	1355	686	669	168	92	76	385	197	188	140	58	82
28	CHITRADURGA	CHITRADURGA	CHITRADURGA	HIREGUNTANUR	HIREGUNTANUR	THIRUMALAPURA	168	166	828	416	412	121	58	63	191	96	95	0	0	0
29	CHITRADURGA	CHITRADURGA	CHITRADURGA	HIREGUNTANUR	HULLURU	HULLURU	1354	806	3638	1859	1779	350	196	154	1332	681	651	254	127	127
30	CHITRADURGA	CHITRADURGA	CHITRADURGA	HIREGUNTANUR	HULLURU	KURUBARAHALLI	149	597	3335	1730	1605	429	213	216	980	521	459	5	4	1
31	CHITRADURGA	CHITRADURGA	CHITRADURGA	HIREGUNTANUR	HULLURU	ROTHHALLI	482	0	0	0	0	0	0	0	0	0	0	0	0	0
32	CHITRADURGA	CHITRADURGA	CHITRADURGA	HIREGUNTANUR	HULLURU	SINGAPURA	1535	431	1918	965	953	163	85	78	873	441	432	18	10	8
33	CHITRADURGA	CHITRADURGA	CHITRADURGA	HIREGUNTANUR	IYYANAHALLY	K. BALEKATTE	294	224	1038	532	506	114	60	54	126	68	58	147	64	83
34	CHITRADURGA	CHITRADURGA	CHITRADURGA	HIREGUNTANUR	LAKSHMISAGARA	CHIKKAPURA	503	541	2727	1396	1331	291	166	125	1031	525	506	146	77	69
35	CHITRADURGA	CHITRADURGA	CHITRADURGA	HIREGUNTANUR	LAKSHMISAGARA	KYASAPURA	459	240	1242	631	611	125	63	62	396	199	197	210	106	104
36	CHITRADURGA	CHITRADURGA	CHITRADURGA	HIREGUNTANUR	LAKSHMISAGARA	LAKSHMISAGARA	887	470	2366	1226	1140	249	127	122	464	242	222	947	491	456
37	CHITRADURGA	CHITRADURGA	CHITRADURGA	HIREGUNTANUR	LAKSHMISAGARA	SADARAHALLI	532	291	1575	832	743	232	136	96	138	72	66	348	181	167
38	CHITRADURGA	CHITRADURGA	CHITRADURGA	HIREGUNTANUR	LAKSHMISAGARA	VIJAPURA	457	324	1629	867	762	188	89	99	346	174	172	295	183	112
39	CHITRADURGA	CHITRADURGA	CHITRADURGA	KASABA	ANNEHAL	ANNEHAL	699	658	3223	1608	1615	384	208	176	1160	562	598	299	153	146
40	CHITRADURGA	CHITRADURGA	CHITRADURGA	KASABA	ANNEHAL	MAHADEVANAKATTE	533	147	691	356	335	87	49	38	83	46	37	59	27	32
41	CHITRADURGA	CHITRADURGA	CHITRADURGA	KASABA	GODABANAHAL	GODABANAHAL	1521	544	2463	1251	1212	227	109	118	354	182	172	43	19	24
42	CHITRADURGA	CHITRADURGA	CHITRADURGA	KASABA	GODABANAHAL	PANDARAHALLI	832	497	2355	1180	1175	244	124	120	796	401	395	228	104	124
43	CHITRADURGA	CHITRADURGA	CHITRADURGA	KASABA	SIDDAPURA	KATHALLI	365	150	619	329	290	50	30	20	177	94	83	70	37	33
44	CHITRADURGA	CHITRADURGA	CHITRADURGA	KASABA	SIDDAPURA	MANANGI	556	576	2579	1286	1293	346	167	179	1134	565	569	64	34	30
45	CHITRADURGA	CHITRADURGA	HOLALKERE (SC)	BHARAMASAGARA	ALAGAVADI	ALAGAVADI	618	429	1975	995	980	198	113	85	502	264	238	860	423	437
46	CHITRADURGA	CHITRADURGA	HOLALKERE (SC)	BHARAMASAGARA	ALAGAVADI	DODDIGANAHAL	1024	254	1191	589	602	120	58	62	1072	536	536	76	32	44
47	CHITRADURGA	CHITRADURGA	HOLALKERE (SC)	BHARAMASAGARA	ALAGAVADI	ESHWARANAGARA	219	189	922	462	460	109	55	54	922	462	460	0	0	0
48	CHITRADURGA	CHITRADURGA	HOLALKERE (SC)	BHARAMASAGARA	ALAGAVADI	HORAKENAHALLI	254	0	0	0	0	0	0	0	0	0	0	0	0	0

**Activity: 4**

<b>Title of work</b>	Davanagere District Ground Water Fluctuation Map
<b>Department Name</b>	Department of Ground water, Davanagere
<b>Objectives</b>	Davanagere District Ground Water Fluctuation Analysis Study and Report Preparation.
<b>Data Used</b>	District Boundary, Taluk Boundary, GP Boundary, GP Location, OB Well Location and OB well wise data provided by department.
<b>Data Process</b>	OB well wise data (Excel) provided by department was joined to OB Well Location data (.shp) and Using Spatial analysis tool Create a ground water Depth analysis map was generated and provided to department.
<b>Type of Data Provided</b>	PDF and JPEG Maps ( <b>Map-11 &amp; 12</b> )

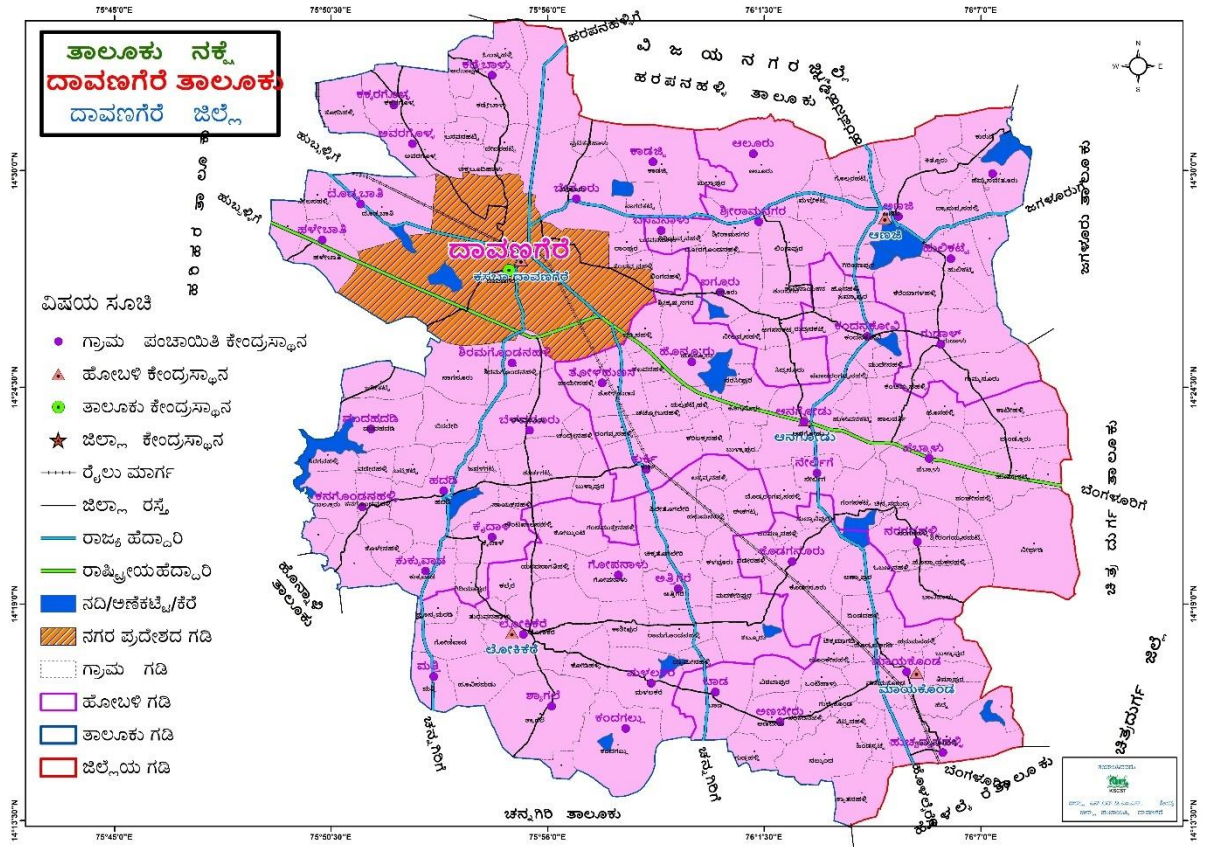


**Map 11 : Davanagere District February 2024 Ground Water Fluctuation Map.**

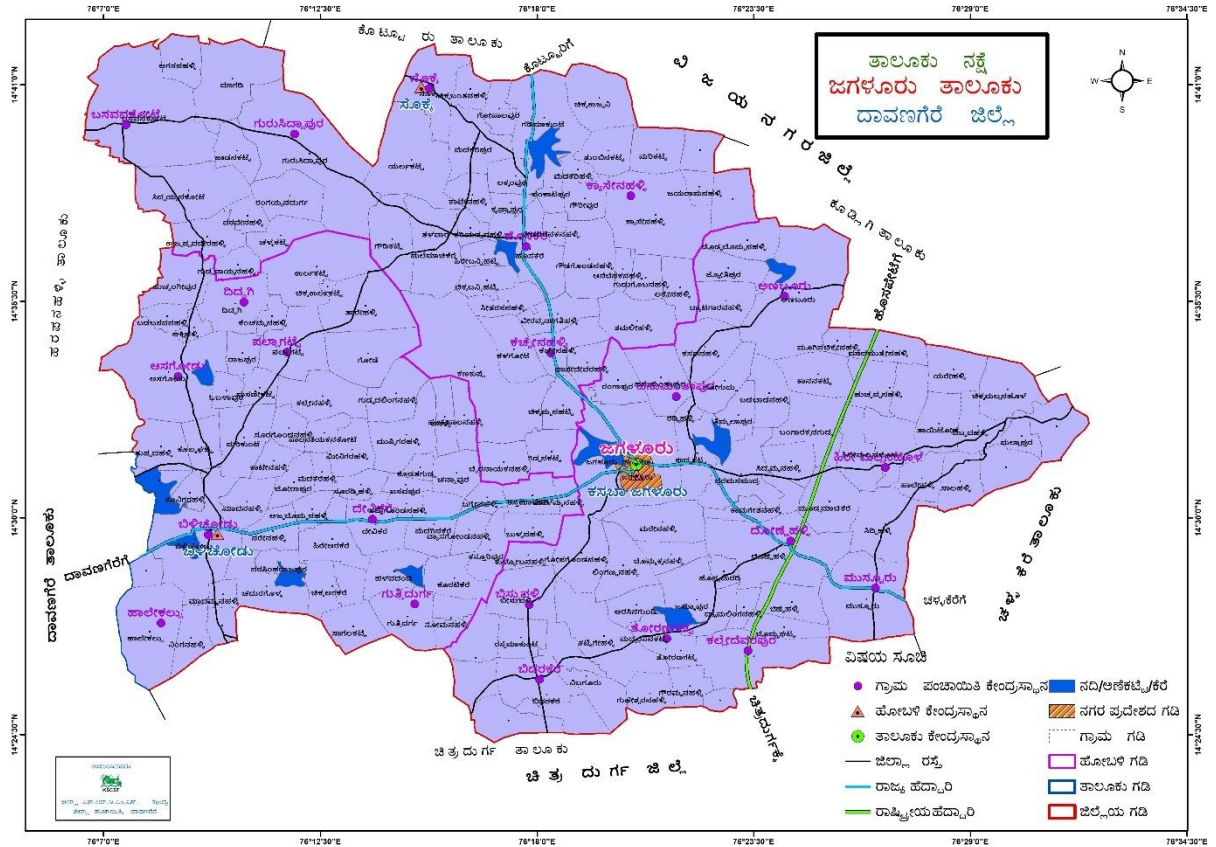






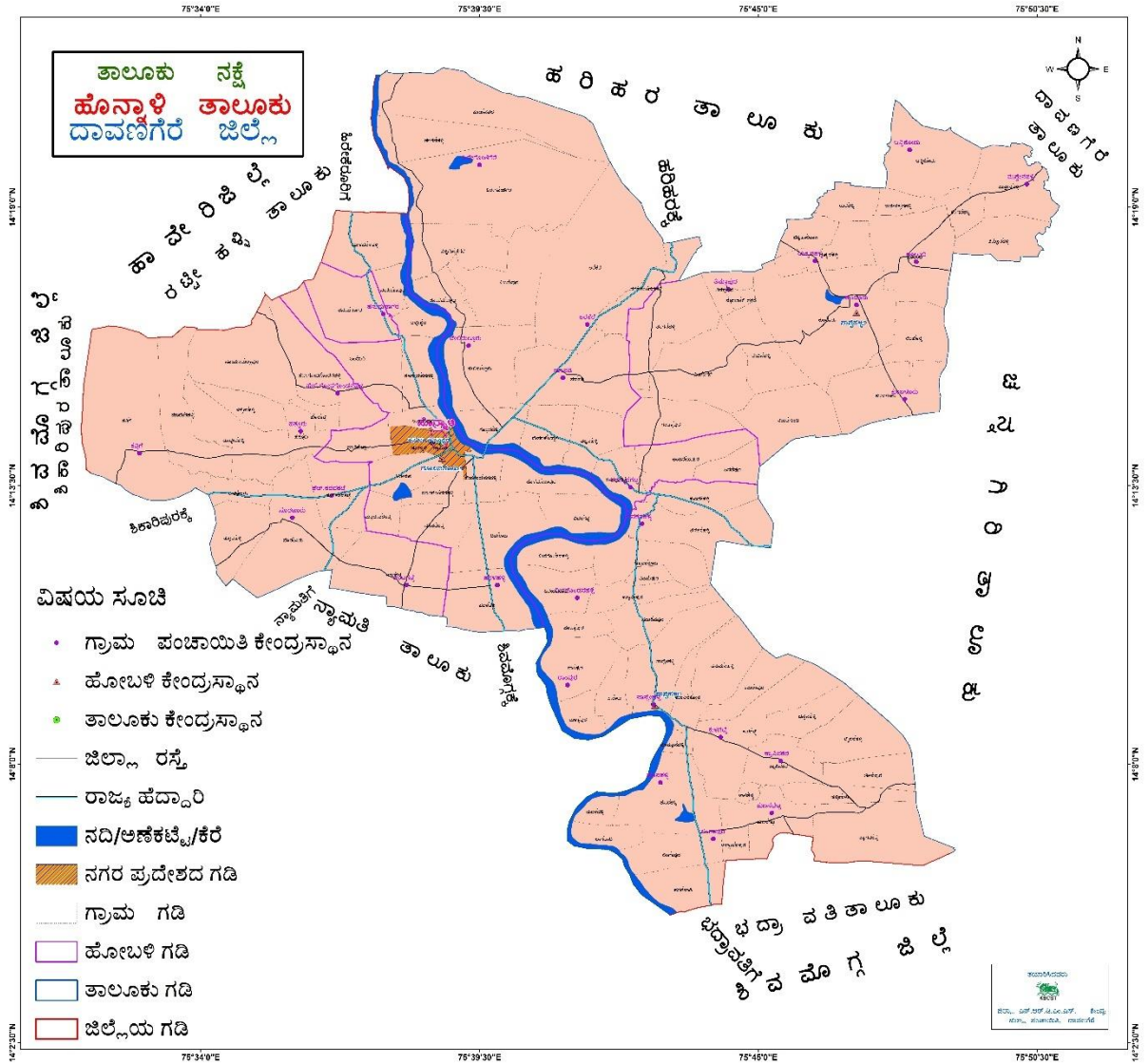


Map 14 : Davanagere Taluk Administration Map.





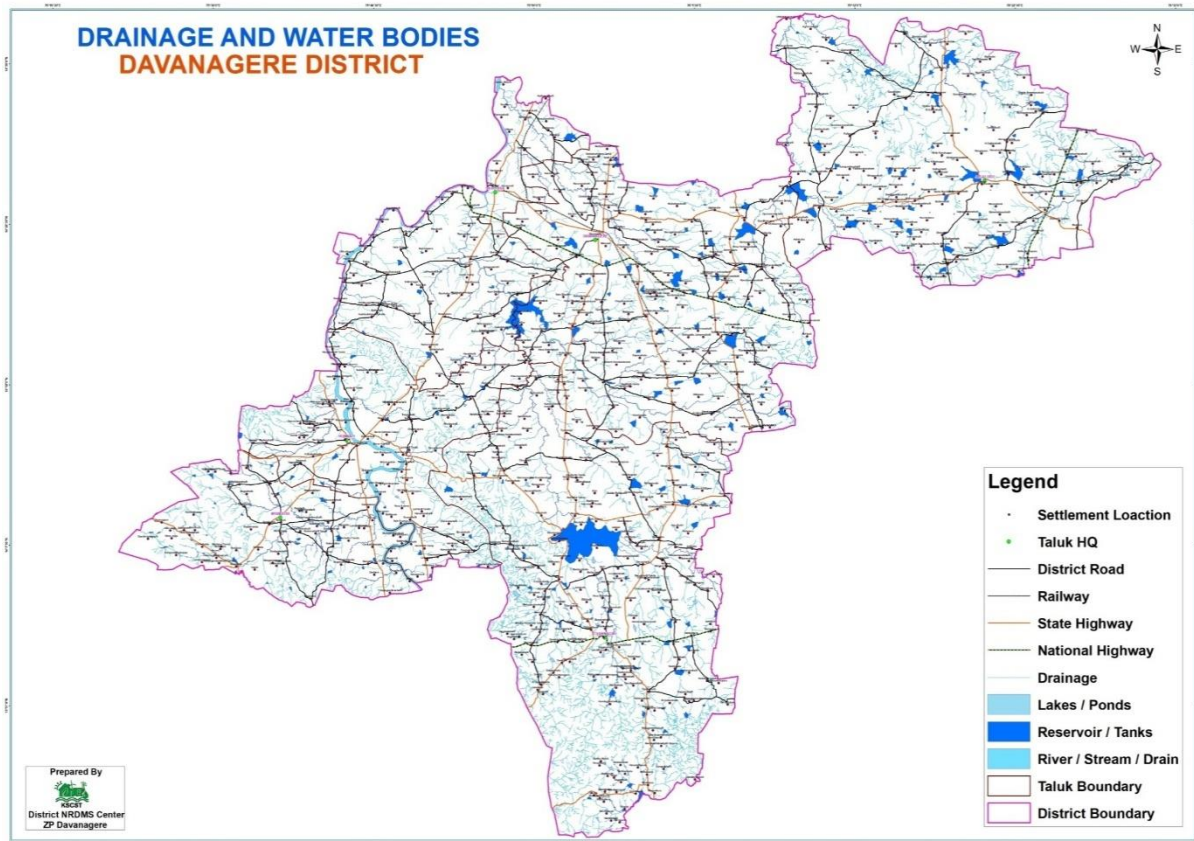
**Map 15 : Jagalur Taluk Administration Map.**



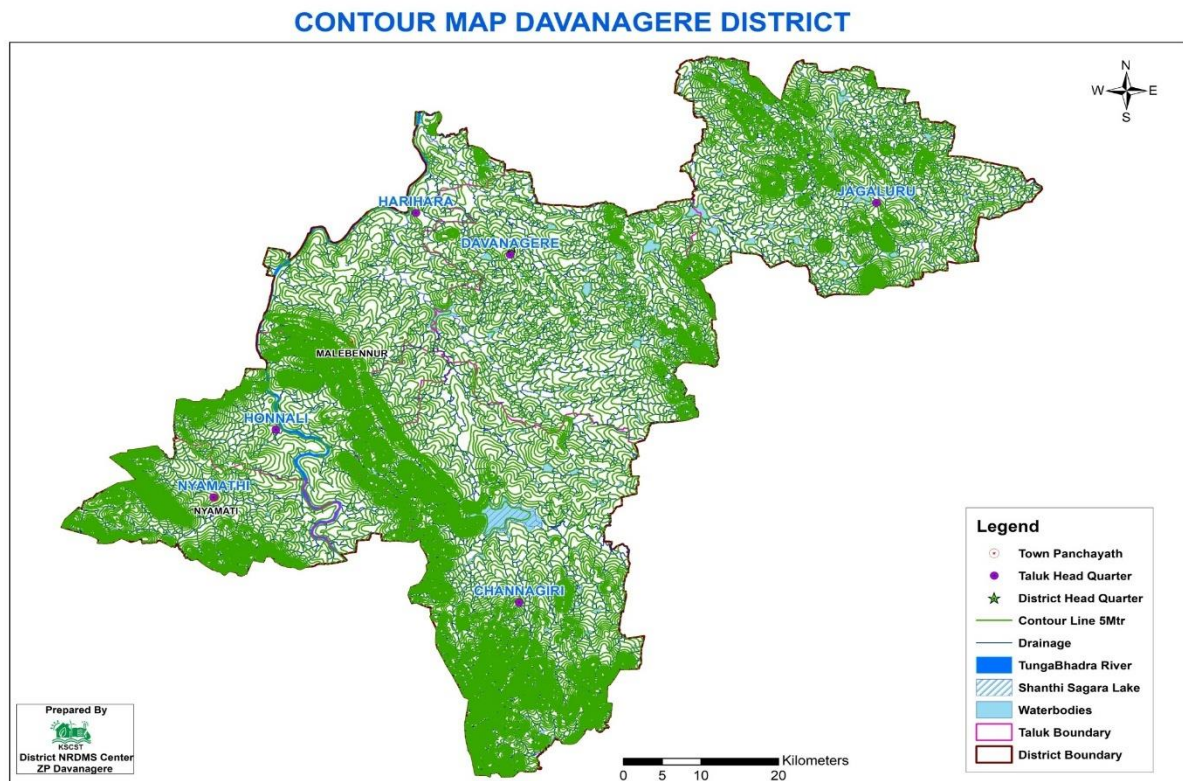
**Map 16 : Honnali Taluk Administraion Map.**

**Activity: 6**

<b>Title of work</b>	Resource Maps for Jalashakthi Abiyan CTR-2025
<b>Department Name</b>	Zilla Panchayat Office Davanagere
<b>Objectives</b>	As Zilla Panchayat MGNREGA unit request to District Resource Maps For Presentation to JSA Central Team Visit.
<b>Data Used</b>	District Boundary, Taluk Boundary, Forest Boundary, Command Area, Geology DEM, Soil, Geology, Drainage and Waterbodies.
<b>Data Process</b>	All the Resource Maps are map layout was prepared and provided.
<b>Type of Data Provided</b>	PDF and JPEG Maps ( <b>Map-17 to 22</b> )

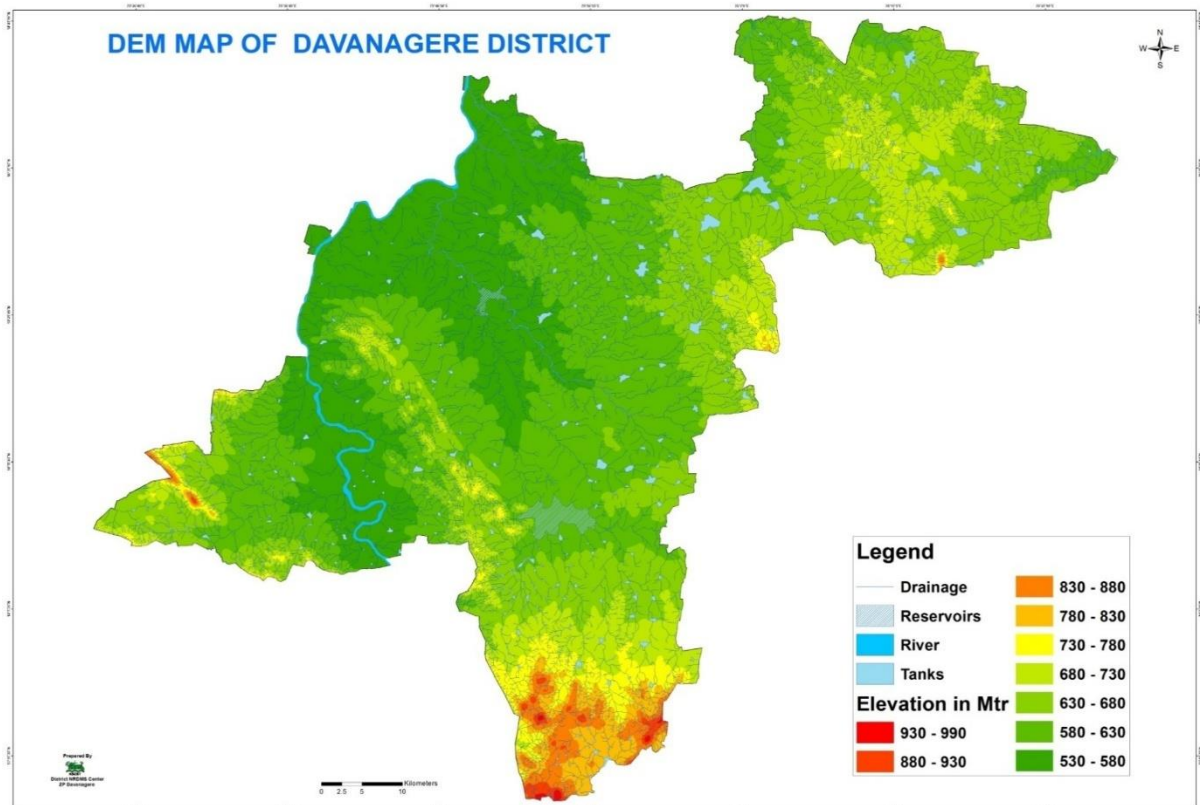


**Map 17 : Drainage and Water Bodies Map.**

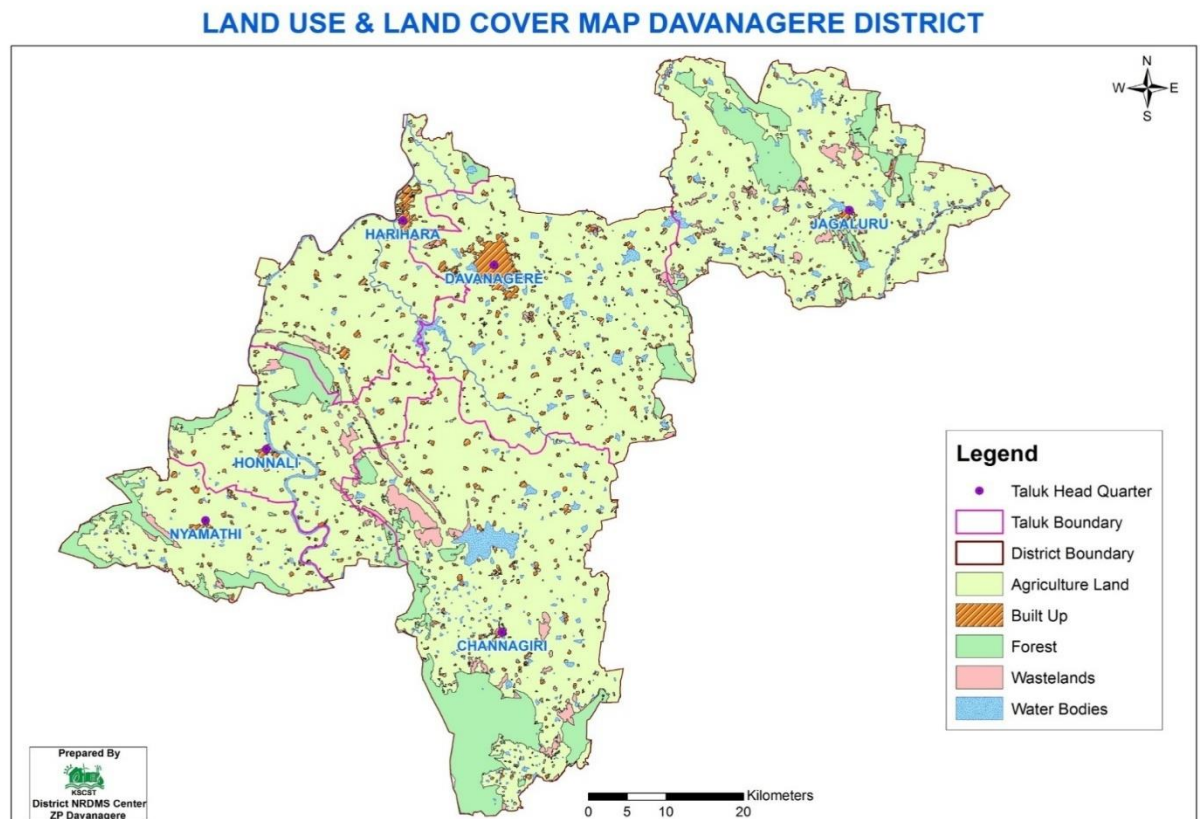


**Map 18 : Contour Map.**



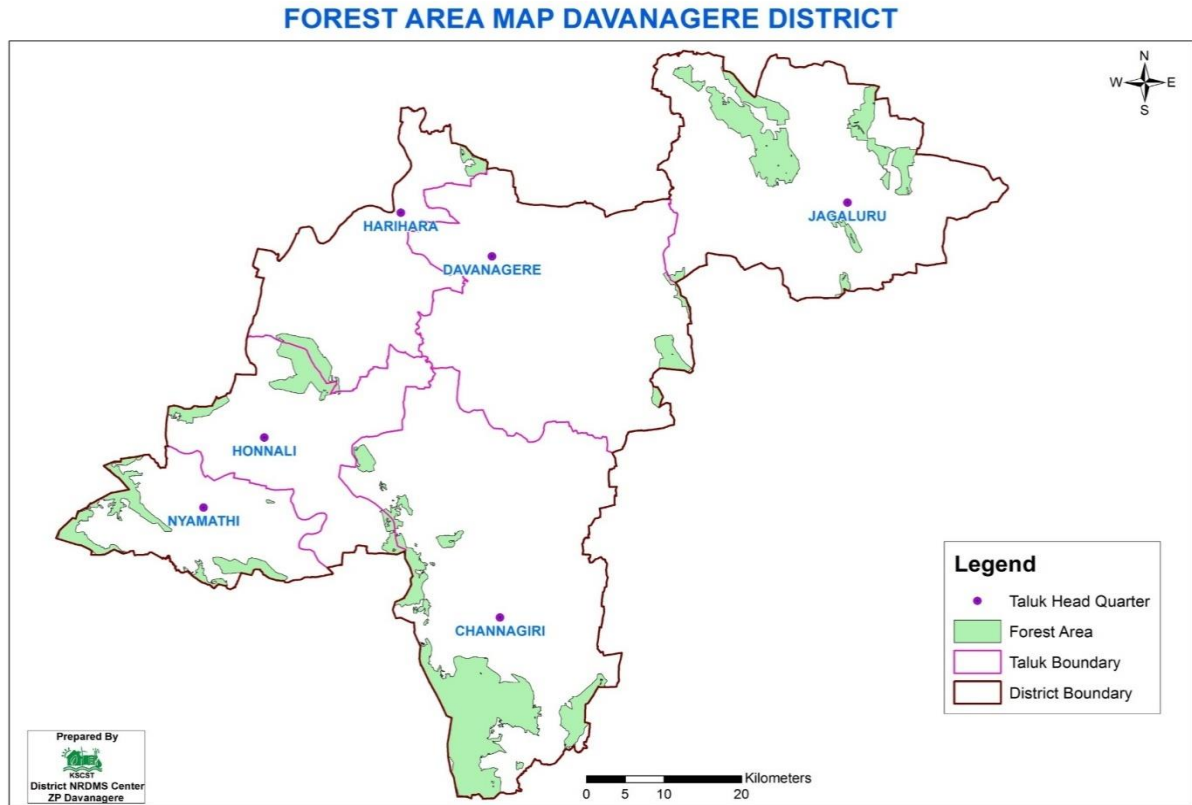


**Map 19 : Digital Elevation Model Map.**

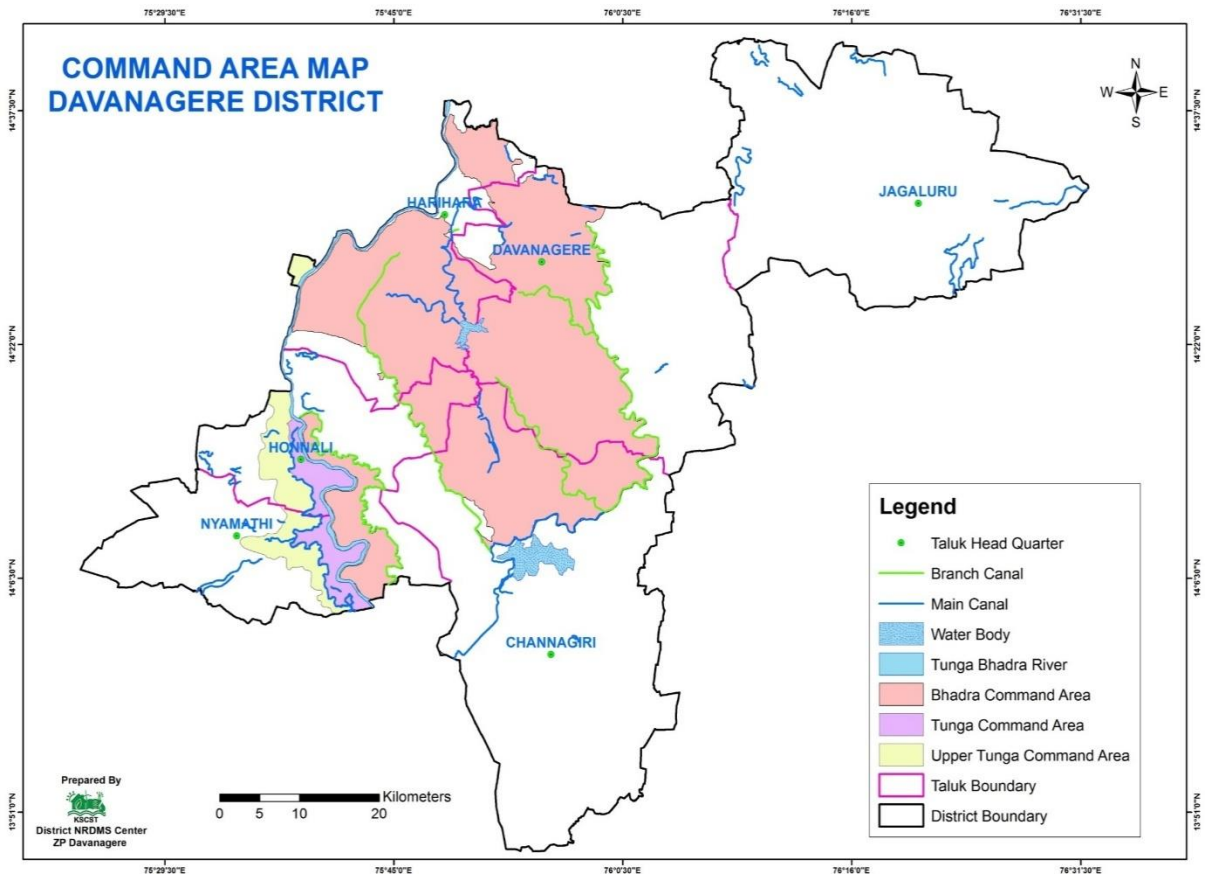


**Map 20 : Land Use and Land Cover Map.**





**Map 21 : Forest Area Map.**



**Map 22 : Command Area Map.**

## **6. Training Programmes Attended**

1. Attend one day workshop on Geospatial Applications for District-Level planning at JN Tata auditorium, IISc, Bengaluru on 28-04-2025.
2. Attended 1 day training program conducted by MGNREGA & KSRSAC on 09-05-2025 at KSRSAC, Bengaluru regarding KGIS Portal for Road Side Plantation (Hasiru Patha).
3. Attend New Geo MGNREGA Application, Structural Geotagging, Geo-fencing, e-KYC and FaceAuth- NMMS app Training held at NIRD, Hyderabad on 07-07-2025 and 08-07-2025.

## **7. Training Imparted to Line Department**

1. Yukthadhara workflow and Hands on Training given to All 6 Taluk Yukthadhara Selected GP PDO, TC, TAE, GKM, BFT and operator on 05-04-2025.
2. Provided training to Forest department staff regarding KGIS Portal for Road Side Plantation in Davanagere district on 04-06-2025.
3. Taluk at a Glance (TAG) training given to Harihara taluk PDO's and other Line Department officers on 26-06-2025.

## **8. Science Outreach Activities**

No Science Outreach Activities were conducted during this period.

## **9. Conclusion**

### **A) Summary of Activities Under Take.**

During this period district NRDMS center, ZP Davanagere provided various Maps, data and report to Zilla Panchayat Office, Deputy Commissioner Office, Police Department and various line department, pertaining to implementation of various activities and assist district administration in disaster management.

### **B) Commitment to Improve NRDMS Activities.**

District NRDMS Centre ZP Davanagere is committed to provide quality and scientific assistance to department for implementation of developmental activities in district. District NRDMS center is also committed to update the existing data base as up to date to enhance its performance and to assist the departments.

Centre is also committed to learn and update ourself to latest GEO SPATIAL technology and other software to improve our efficiency.

## 10. Annexures

### List of Tables:

**Table 1:** Showing administrative details of Davanagere district.

**Table 2 :** Villages List affected by Mines (10 KM from Mining Area)

### List of Maps:

**Map 1:** Location map of Davanagere District.

**Map 2:** Kudrekonda Village Watershed and RS Map

**Map 3:** Anaburu Village Watershed and RS Map

**Map 4:** Areail Distance from Davanagere Corporation Boundary to SY 52, Gopanal Village, Davanagere Taluk Google Image Map.

**Map 5:** Areail Distance from Davanagere Corporation Boundary to SY 52, Gopanal Village, Davanagere Taluk Dishaank Map.

**Map 6:** SY 52, Gopanal Village, Davanagere Taluk Dishaank Map.

**Map 7:** Areail Distance from Jagaluru Town Panchayath Boundary to SY 52, Gopanal Village, Davanagere Taluk Dishaank Map.

**Map 8:** Areail Distance from Jagaluru Town Panchayath Boundary to SY 52, Gopanal Village, Davanagere Taluk Google Image Map.

**Map 9 :** Directly Mining affected Villages of Chtradurga and Holalkere Taluk Map.

**Map 10 :** Directly Mining affected Villages of Chtradurga and Holalkere Taluk Map.

**Map 11 :** Davanagere District February 2024 Ground Water Fluctuation Map.

**Map 12 :** Davanagere District February 2025 Ground Water Fluctuation Map.

**Map 13 :** Channagiri Taluk Administration Map.

**Map 14 :** Davanagere Taluk Administration Map.

**Map 15 :** Jagaluru Taluk Administration Map.

**Map 16 :** Honnali Taluk Administraion Map.

**Map 17 :** Drainage and Water Bodies Map.

**Map 18 :** Contour Map.

**Map 19 :** Digital Elevation Model Map.

**Map 20 :** Land Use and Land Cover Map.

**Map 21 :** Forest Area Map.

**Map 22 :** Command Area Map.

\*\*\*\*\*