

# ***NATURAL RESOURCES DATA MANAGEMENT SYSTEM (NRDMS)***

## ***MONTHLY ACTIVITY REPORT April - July 2025***

***Submitted by  
District NRDMS Centre  
Zilla Panchayat,  
Haveri***



***Submitted to  
Karnataka State Council for  
Science and Technology (KSCST)  
Indian Institute of Science Campus,  
Bengaluru – 560012***

## INDEX

SL.No	Details	Page Number
1	Basic Information of the District	2
2	Background of District NRDMS Centre, Haveri	
3	Geographical Features	3-5
4	NRDMS Spatial and Non-Spatial Data available in District NRDMS Centre	6-12
5	NRDMS Centre Activities (April 2025 –July 2025)	13-22
6	Training Programmes Attended	23
7	Training Imparted to Line Departments	
8	Science Outreach Activities	
9	Conclusion	
10	Annexures	24

## **1. Basic Information of the District**

**District Name:** Haveri

**Division:** Belagavi

**District Establishment Year:** 1997

**Headquarters:** Haveri

**Current CPO (Chief Planning Officer):** H Y Meeshi

**Current CEO (Chief Executive Officer):** Ruchi Bindal ,IAS, CEO,  
Zilla Panchayat Haveri

## **2. Background of District NRDMS Centre, Haveri:**

The NRDMS centre are providing analysed/value added information to planners and administrators besides developing applications using geo-spatial technologies suitable for local level planning. The NRDMS centre providing need-based information to users such as elected bodies, district administration and planners through maps, charts, tables, and reports etc., on spatial and non-spatial data.

Haveri district was new district carved out of undivided Dharwad district in the year 1997 and District NRDMS Centre was established in the year 2007-08 at Zilla Panchayat Office. District NRDMS Centre is been actively involved in providing Geospatial support to Zilla Panchayat office, District administration and line departments of the districts for better planning and execution of development work.

## **3. Geographical Features**

### **A. Location & Boundaries:**

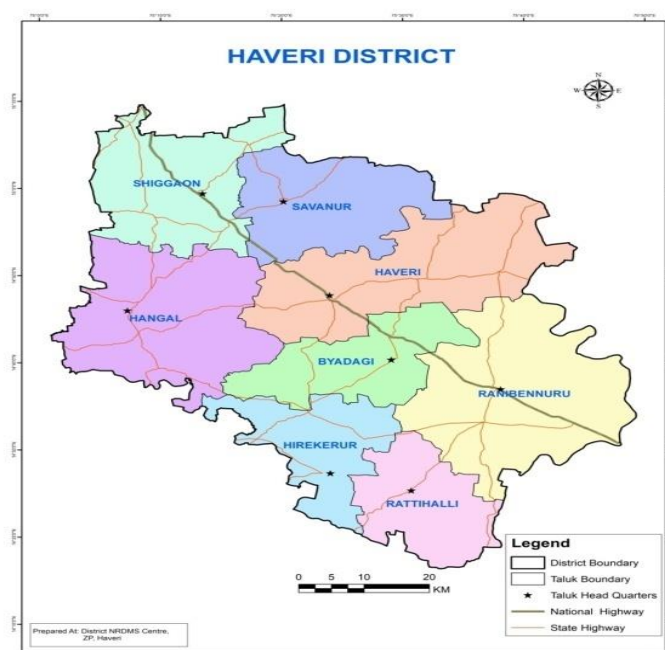
Haveri is a district in the state of Karnataka which is located at the distance of 335 km from the state capital of Bengaluru. Haveri district is exactly in the center of Karnataka, being equidistant from Bidar in the far north and Kollegal in the far south. It is also known as the gateway district to the northern districts of Karnataka. Haveri district has a very rich culture and tradition. The district borders Uttarakannada and Shimogga districts in the west part, Dharwad and Gadag district in the north and Vijayanagar district in the East and Davangere district in the South. Location Map of Haveri district is Shown in below **Map-1**.

The district is divided into 8 taluks. There are 19 hoblies, 701 villages and 223 Gram panchayaths, and 10 Urban Local Bodies (ULBs) in the district. As per the 2011 census, total population of the district is 15,97,668 with population density of 352 inhabitants per sq.km. The sex ratio is 944 female among thousand males. The Literacy rate is 77.40%.

**Table - 1** showing administrative details of Haveri district.

SL No	Taluk	No of Villages	No of Hoblis	No of GP's	No of ULB's
1	Byadgi	66	2	21	1
2	Hangal	155	3	42	1
3	Haveri	88	3	33	2
4	Hirekerur	66	2	19	1
5	Ranebennur	108	3	40	1
6	Rattihalli	61	1	19	1
7	Savanur	65	2	21	1
8	Shiggaon	92	3	28	2
<b>Grand Total</b>		<b>701</b>	<b>19</b>	<b>223</b>	<b>10</b>

**Map1:**



- **Geographical Coordinates:**

- Latitude: 14°16'24.6"N and 15°09'45"N
- Longitude: 75°0'59.7"E and 75°49'21.3"E

**Topography:**

The topography of Haveri district is primarily a gently undulating plain with elevations ranging from 515 to 732 meters above sea level, sloping towards the northeast. It is a transitional zone between the Western Ghats and the Maidan region, featuring hilly areas in the western part and ridges in the southern

Hirekerurtaluk. The main rivers like the Varada, Kumadwathi, Dharma, and Tungabhadra flow through the district.

**Rainfall:** During 2024, Haveri district as a whole recorded an actual rainfall of 899.4 mm as against its normal value of 800 mm with percentage departure from normal being (+)12% and the district is classified under Normal category.

Normal annual rainfall is approximately 800 mm.

Most precipitation occurs during the southwest monsoon (June to September) and, to a lesser extent, the northeast monsoon (October to November).

**Temperature Range:** temperatures ranging from approximately 18°C (Min) to 40°C (Max).

**Climatic Zones:** Northern Transition Agro-Climatic Zone

#### **Natural Resources:**

Landuse/Land cover (Sq Km) Forest area 474.54 Net area sown 3492.503

Cultivable area 4474.0. Major soil types in the district : Red sandy soil, Medium black soil, Deep black soil, Red loamy soil and Lateritic soil.

#### **Soil Resources:**

Soils are the major ingredients of the agricultural production system. The soils of the district can be broadly grouped into 3 major categories out of which Clayey skeletal soil and clayey soil are major categories in the district. Red loamy and sandy soils generally occur on hilly areas to undulating landslope on granite and gneissic terrain. The soils are light textured and are highly leached in nature with good infiltration rate.

#### **Geological formation**

Physiologically the district can be divided into rocky upland, plateau & flat topped hills located at an elevation of about 572m above MSL. Geologically the district has 5 major types of geological rockformations among which and Grewacke-Argillite is the dominant rock formation followed by metabasalt.

#### **Hydro-Geomorphology**

Geomorphologically the Hills form the majority of the district underlain by granites and gneisses with the highest elevation of 572m amsl. There are 6 major types of geomorphological units found in the district in which Plateau is the major unit. Most of the water harvesting structures are located in Pediplain geo-morphological unit where the ground water prospect is moderate.

**Groundwater:** Available in moderate quantities, though overexploitation in some areas has led to concerns about sustainability.

#### **Major Rivers/Water Sources:**

The main water sources in Haveri district are the Tungabhadra, Varada, Kumudvati, and Dharma rivers, which form part of the Krishna River basin. Groundwater also plays a significant role, with availability in phreatic and fractured aquifers, and projects like the Upper Tunga Project (UTP) are implemented to improve irrigation potential from these river sources.

#### **Irrigation and Water Projects:**

- The Upper Tunga Project (UTP) aims to increase irrigated areas in the district using river waters, specifically targeting the Ranebennur, Haveri, Hangal, Hirekerur, and Byadagitaluks.
- The Dharma Project is also implemented to provide canal irrigation in the Hangaltaluk.

#### 4. NRDMS Spatial and Non-Spatial Data available in District NRDMS Centre

**Status Code : Meaning**

CC : Computerised.  
 ND : Not Digitized  
 NA : Not Procured  
 NR : Not Relevant  
 NF : Not Finalised

#### SPATIAL DATABASE

Sector / Subsector	Scale	Source	Survey / Publn. Year	Area covered	Status Code	File Format
1. Natural Resources						
Land						
1. Topography						
Contour Map	1:50,000	SOI		District	CC	.shp
Slope Map		SOI	Can be generated			.shp
2. Geology – A						
Rock features		MGD		District	CC	.shp
Structural features				District	CC	.shp
3. Geology – B						
Rock features		MGD		District	CC	.shp
Structural features						
4. Mineral Resources		MGD		District	CC	.shp
5. Geomorphology		MGD		District	CC	.shp
6. Land use		KRSRAC		District	CC	.shp
7. Waste Lands		KRSRAC		District	CC	.shp
8. Soils		NBSS & LUP		District	CC	.shp
9. Forest & Wildlife						
Forest type		KFD		District	CC	.shp
Crown Density						
Forest Category						
Forest admn.		SOI				
Wild Life						

<b>Water</b>						
1.Ground water						
Hydro Geology		MGD			CC	
Hydro chemistry		ZP			CC	
Ground water budget						
2.Surface water						
Drainage		MGD		District	CC	.shp
Surface water bodies		SOI & KRSRAC		District	CC	.shp
<b>3.Climate</b>						

Sector / Subsector	Scale	Source	Survey / Publn. Year	Area covered	Status Code	File Format
<b>2.Demography</b>						
<b>Population: 2011 Census</b>						
Tehsil boundary				District	CC	.shp
District boundary				District	CC	.shp
Current popln. distbn.				District	CC	.shp
<b>Literacy</b>						
Levels of education						
<b>Occupation</b>						
Village boundary				District	CC	.shp
<b>Employment</b>						
District scenario						
Employment exchange						
<b>Assets &amp; Expenditure</b>						
<b>Migration</b>						
<b>Destitutes</b>						

<b>3.Socio Economy</b>						<b>File Format</b>
<b>Industry</b>				District	CC	.shp
<b>Developmental activity</b>						
<b>4.Agro Economy</b>						
<b>Land Utilisation</b>						

Private Land						
Common property						
<b>Land Ownership pattern</b>						
General scenario						
Farmer's holdings						
<b>Principal crops</b>						
<b>Irrigation</b>						
<i>Minor irrigation</i>						
Canals		DLR & SS		District	CC	.shp
Tube wells		DLR & SS		District	CC	.shp
Dug wells		DLR & SS		District	CC	.shp
Tanks		DLR & SS		District	CC	.shp
Lift irrigation		DLR & SS		District	CC	.shp
<i>Major irrigation</i>						
Reservoirs		DLR & SS		District	CC	.shp
Anicuts		DLR & SS		NA		
<b>Agricultural implements</b>						
<b>Animal husbandry</b>		AHVS		District	CC	.shp
<b>Pisciculture</b>						
<b>Plantation</b>						

<b>Sector / Subsector</b>	<b>Scale</b>	<b>Source</b>	<b>Survey / Publn. Year</b>	<b>Area covered</b>	<b>Status Code</b>	<b>File Form at</b>
<b>5.Infrastructure</b>						
<b>Communications</b>						
Post offices		DLR & SS				
Telecommunication		DLR & SS				
<b>Drinking water</b>		DLR & SS				
<b>Educational facilities</b>		DDPI		District	CC	.shp
<b>Electricity</b>		Land Records				
<b>Financial institutions</b>		DLR & SS				
<b>Markets</b>		DLR &				



		SS				
<b>Health</b>		DHO	2021	District	CC	.shp
<b>NGO's</b>		DLR & SS				
<b>Tourism</b>		KSTDC	2023	District	CC	.shp
<b>Transport</b>	1" = ...miles	PWD		District	CC	.shp
<b>6.Miscellaneous</b>						
District map with taluks	1" =... miles	DLR & SS		District	CC	.shp
District & taluk boundaries		SOI		District	CC	.shp
District map with hobbles	1: =.. miles	DLR & SS		District	CC	.shp
Village boundary with settlement		SOI/KSRA C		District	CC	.shp
Police station details		SP		District	CC	.shp
Details on Assembly constituencies		DC		District	CC	.shp
Gram Panchayths&ZillaPanchayaths, its jurisdiction for all taluks		DC		District	CC	.shp

## Non-Spatial Database

Sector / Subsector	Source	Survey / Publn. Year	Area covered	Status Code	File Format
<b>1. Natural Resources</b>					
<b>Land</b>					
1. Topography					
Contour			District	NR	Database/ Attribute table
Slope			District	NR	Database/ Attribute table
2. Geology – A					
Rock Features	MGD		District	CC	Database/ Attribute table
Structural features			District	CC	Database/ Attribute table
3. Geology – B					
Rock features			District	CC	Database/ Attribute

					table
Structural features			District	CC	Database/ Attribute table
4. Mineral Resources	MGD		District	CC	Database/ Attribute table
5. Geomorphology			District	CC	Database/ Attribute table
6. Land use			District	CC	Database/ Attribute table
7. Waste Lands			District	CC	Database/ Attribute table
8. Soils	NBSS & LUP		District	CC	Database/ Attribute table
9. Forest & Wildlife					
Forest type					
Crown Density					
Forest Category					
Forest admn.					
Wild Life					
<b>Water</b>					
Ground water					
Hydro Geology	MGD				
Hydro chemistry	CGWB				
Ground water budget	MGD				
Surface water					
Drainage			District		Database/ Attribute table
Surface water bodies			District		Database/ Attribute table
<b>Climate</b>	IMD				

2. Demography					File Format
<b>Population</b>					
Tehsil boundary	DLR & SS	2011	District		Database/ Attribute table
District boundary		2011	District		
Current popln. distbn.	DES	2011	District		

<b>Literacy</b>					<b>File Format</b>
Levels of education			District		Database/ Attribute table
<b>Occupation</b>					
Village boundary	DES	2011	District		Database/ Attribute table
<b>Employment</b>					
District scenatio	EO	2011	District		Database/ Attribute table
Employment exchange	EO	2011	District		Database/ Attribute table
<b>Assets &amp; Expenditure</b>					
<b>Migration</b>					
<b>Destitutes</b>					

<b>3. Socio Economy</b>					<b>File Format</b>
<b>Industry</b>	DIC	2023	District		.xls
<b>Developmental activity</b>	DIC				

<b>4. Agro Economy</b>					<b>File Format</b>
<b>Land Utilisation</b>					
Private Land	DSO		VILLAGE		
Common property	DSO				
<b>Land Ownership pattern</b>					
General scenario	DSO				
Farmer's holdings	Rev. Dept				
<b>Principal crops</b>	JDA/DSO		District		.xls
<b>Irrigation</b>					
<i>Minor irrigation</i>					
Canals	CADA		District		Database/ Attribute table
Tube wells	DSO		District		
Dug wells	DSO		District		
Tanks	MIC/ ZPE		District		
Lift irrigation	MID				
<i>Major irrigation</i>					
Reservoirs	CE (N)		District		Database/ Attribute

					table
Anicuts	CE (N)				
<b>Agricultural implements</b>	Ag Census				
<b>Animal husbandry</b>	AH&VS	2018	District		.xls
<b>Pisciculture</b>	Fisheries				
<b>Plantation</b>					
<b>Horticulture</b>	HD	2022	District		.xls
<b>Sericulture</b>	SD				

Sector / Subsector	Source	Survey / Publn. Year	Area covered	Status Code	File Format
<b>5. Infrastructure</b>					
<b>Communications</b>					
Post offices	SSPO/ DES		Village		
Telecommunication	TDM / DES				
<b>Drinking water</b>	ZPE				
<b>Educational facilities</b>	DDPI		District		.xls
<b>Electricity</b>	Census				
<b>Financial institutions</b>	LEAD bank				
<b>Markets</b>	FACS				
<b>Health</b>	DHO	2021	District		.xls
<b>NGO's</b>	DRS				
<b>Tourism</b>	KSTDC	2023	District		.xls
<b>Transport</b>					
Roads	PWD		District		Database/ Attribute table
Rail network	ZPED		District		Database/ Attribute table
Air transport/HELIPAD	PWD		District		Database/ Attribute table
Vehicle census	RTO				
Inland & coastal waterways					
<b>Veterinary services</b>					
Veterinary facilities	AHVS	2019	District		.xls
Other veterinary serv.	AHVS	2019	District		.xls

Incidence of diseases	AHVS		District		.xls
Anganwadi	D W&C				

Sector / Subsector	Source	Survey / Publn. Year	Area covered	Status Code	File Format
<b>6. Miscellaneous</b>					
Administration	DC office	2011	District		Database/ Attribute table
Dt. &Subdivsns.	DC office	2011	District		Database/ Attribute table
Dt., with tehsils	ZP	2011	District		Database/ Attribute table
Dt., with panchayat	DC	2011	District		Database/ Attribute table
Tq., with census vil.	DC	2011	District		Database/ Attribute table
Prices & wages					
Environment					

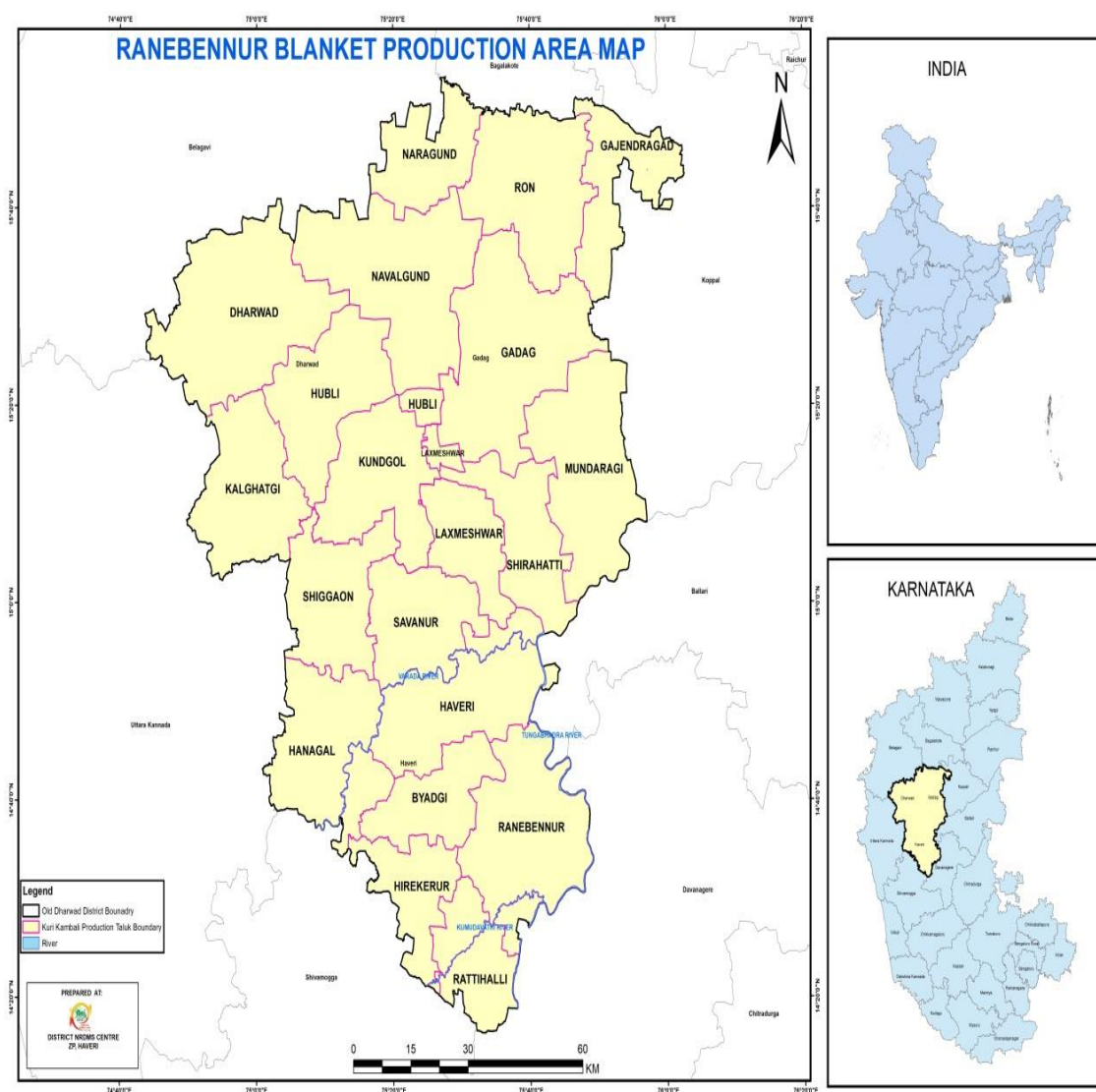
## 5. NRDMS Centre Activities (April 2025 –July 2025)

### Activity -1

<b>Title of work</b>	Ranebennur Blanket Production area mapping for Geographical Indication goods registration.
<b>Title of work</b>	KSCST Bengaluru
<b>Objectives</b>	<p>GI (Geographical Indication) tag is given to agricultural products, natural or manufactured products of a specific geographical area. GI tag assures about the quality and uniqueness of the product.</p> <p>Weaving is the sector that provides employment to the most people after agriculture in the districts of Dharwad, Haveri and Gadag which fall under the jurisdiction of the old Dharwad district. These districts have been famous for blanket weaving for hundreds of years. There is a huge demand for the blankets made in the kuni looms here. In order to save and develop the weaving, the Karnataka State Council of Science and Technology, Bangalore has selected the product “Ranebennur Blanket” for registration under Geographical Indication (GI) and the registration process is in progress. A map of the taluks producing blankets in Dharwad, Haveri and Gadag districts was prepared. The taluk and district boundaries were used to prepare the said map. This map will be useful for registering the “Ranebennur Blanket” product under Geographical Indication (GI) and for the Handloom and Textiles Department to formulate and effectively implement several</p>

	schemes to save weaving.
<b>Data Used</b>	Taluk boundary and district boundaries.
<b>Data Process</b>	Dharwad, Haveri and Gadag districts boundary data (.shp) joined and required Map was generated and provided to KSCST
<b>Type of Data Provided</b>	JPEG Maps (Map-2)

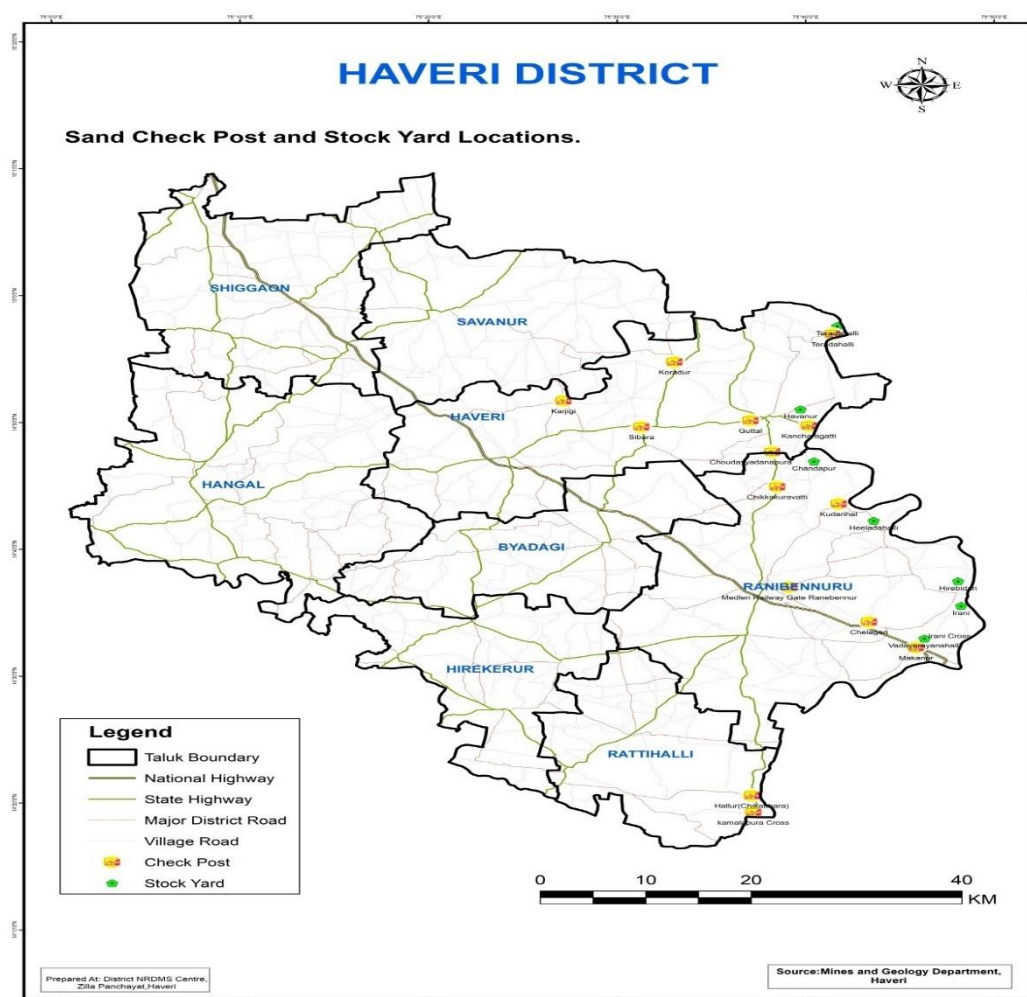
**Map2:**



## Activity -2

<b>Title of work</b>	Location Map of Sand mining sites in Haveri District
<b>Department Name</b>	Department of Mines and Mineral Resources, Haveri
<b>Objectives</b>	Tungabhadra, KumadwathiVarada and Dharma rivers flow through the district.They provide drinking water, irrigation system and good quality sand resources to the district.The Department of Mines and Mineral Resources, Haveri, extracts sand from the river banks and distributes it to the public through stack yards.The location information of the said stack yards and check posts is shown on the map.This will facilitate the department in distributing/managing sand to the public.
<b>Data Used</b>	Taluk Boundary, Village Location, Mine Location and Stack Yard Location (Provided by DMG, Haveri)
<b>Data Process</b>	Sand Mine and Stack Yard Locationdata using for map preparation and required map was generated and provided to Department of Mines and Mineral Resources, Haveri.
<b>Type of Data Provided</b>	JPEG Map( <b>Map-3</b> )

**Map3:**

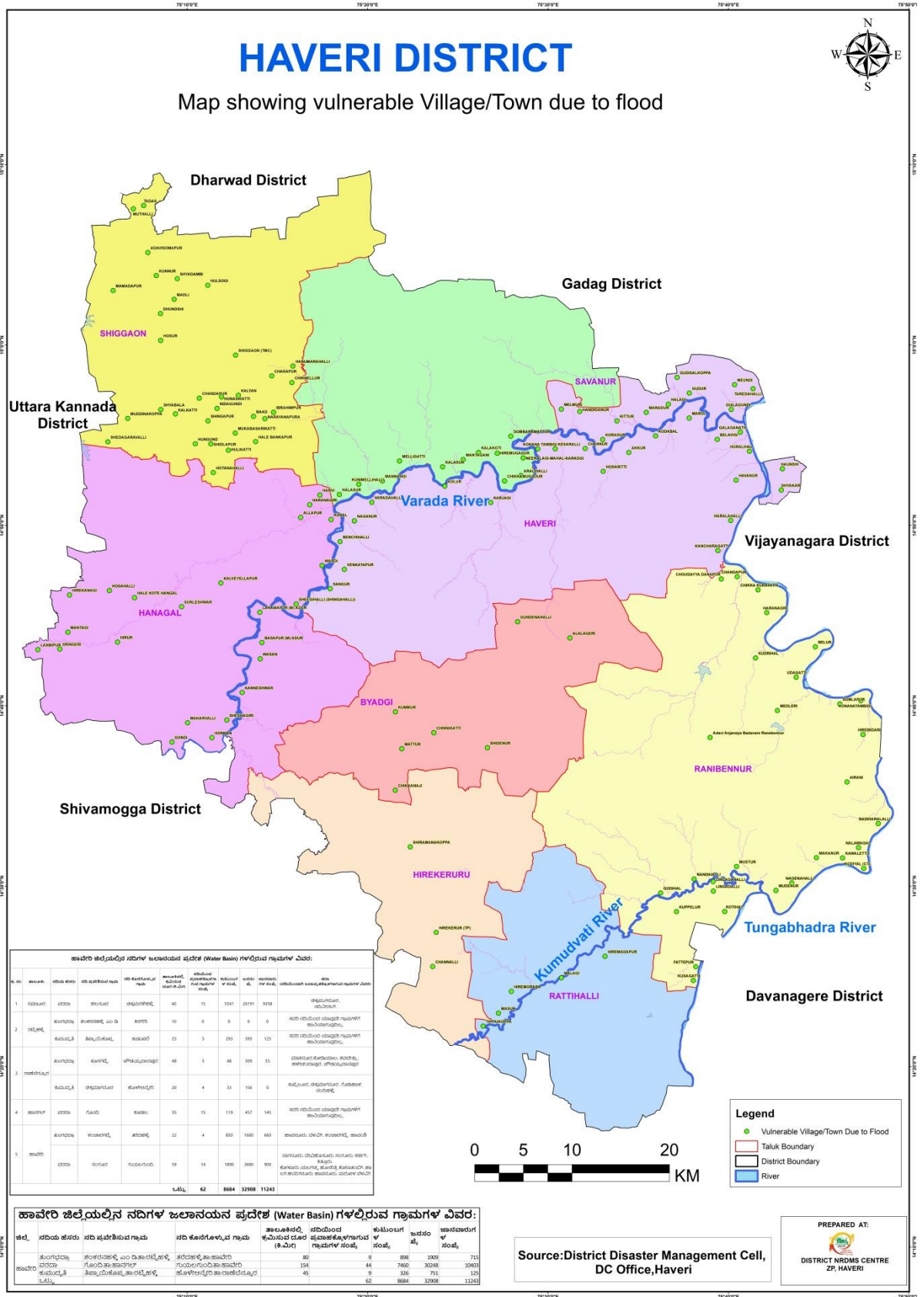


**Activity: 3**

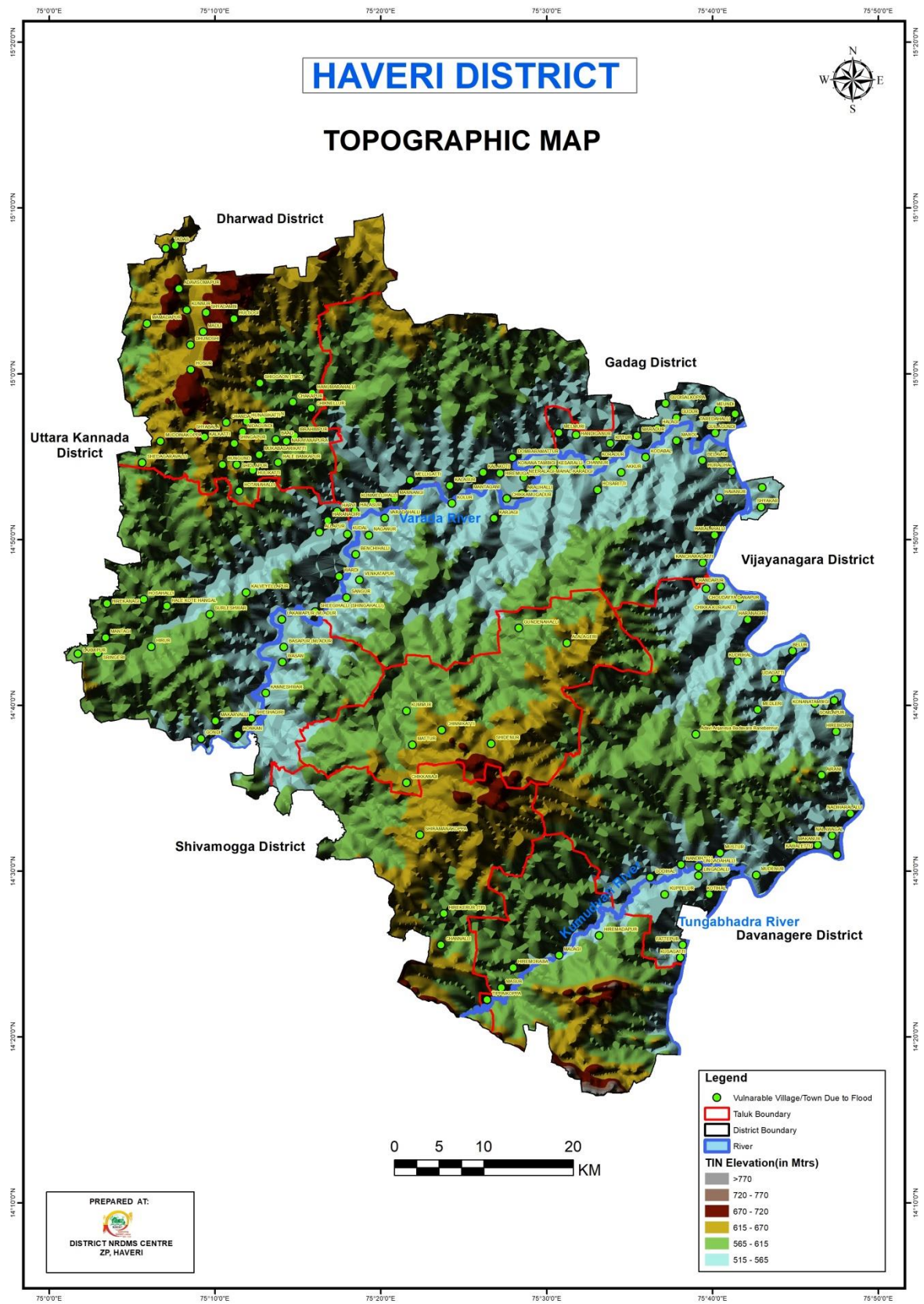
<b>Title of work</b>	Map Showing Vulnerable Village/Town due to Flood in Haveri District.
<b>Department Name</b>	Deputy Commissioner Office, Haveri
<b>Objectives</b>	The aim of Haveri District DM plan is execution of disaster management in continuous and integrated process of planning, organizing, coordinating and implementing measures which are necessary for prevention, mitigation, capacity-building, preparedness to any threatening disasters situation. Accordingly to analyze the geomorphic, topographic, geologic, meteorological, hydrologic, economical, social and political perspectives using that are integrated with proactive Science and Technology inputs and to identify the main hazards happening in the area. In this regard Maps of Vulnerable Village & Town location was prepared and excel sheet showing village wise was prepared and submitted.
<b>Data Used</b>	District Boundary, Taluk Boundary, Vulnerable Village/Town Boundary and village wise data provided by department.
<b>Data Process</b>	Using above mention layers Vulnerable Village/Town due to Flood mapping was done for the district for mitigation and early planning of flood precaution measures for district administration.
<b>Type of Data Provided</b>	JPEG Maps ( <b>Map-4 to 5</b> )



Map4:



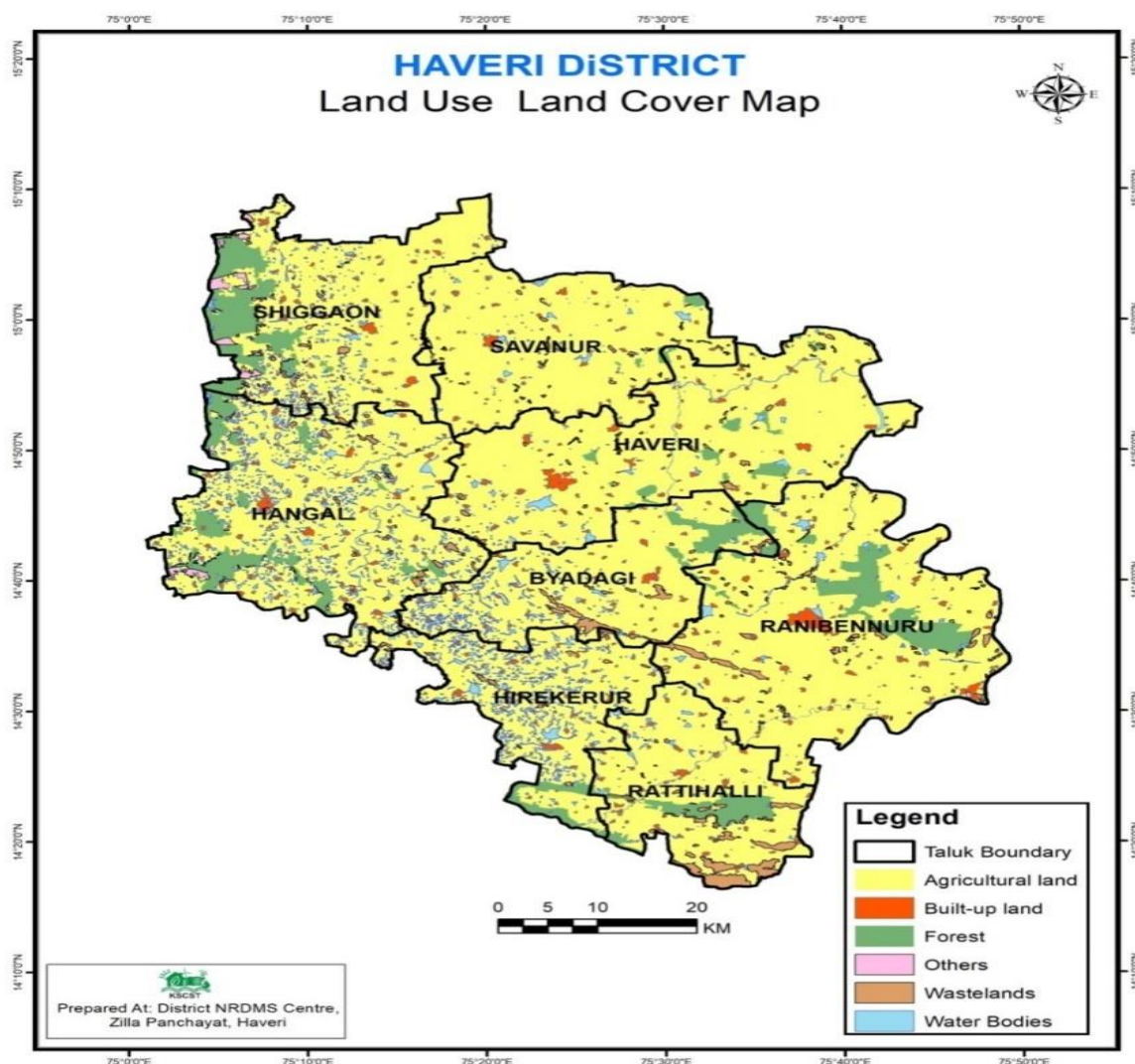
Map5:



#### Activity: 4

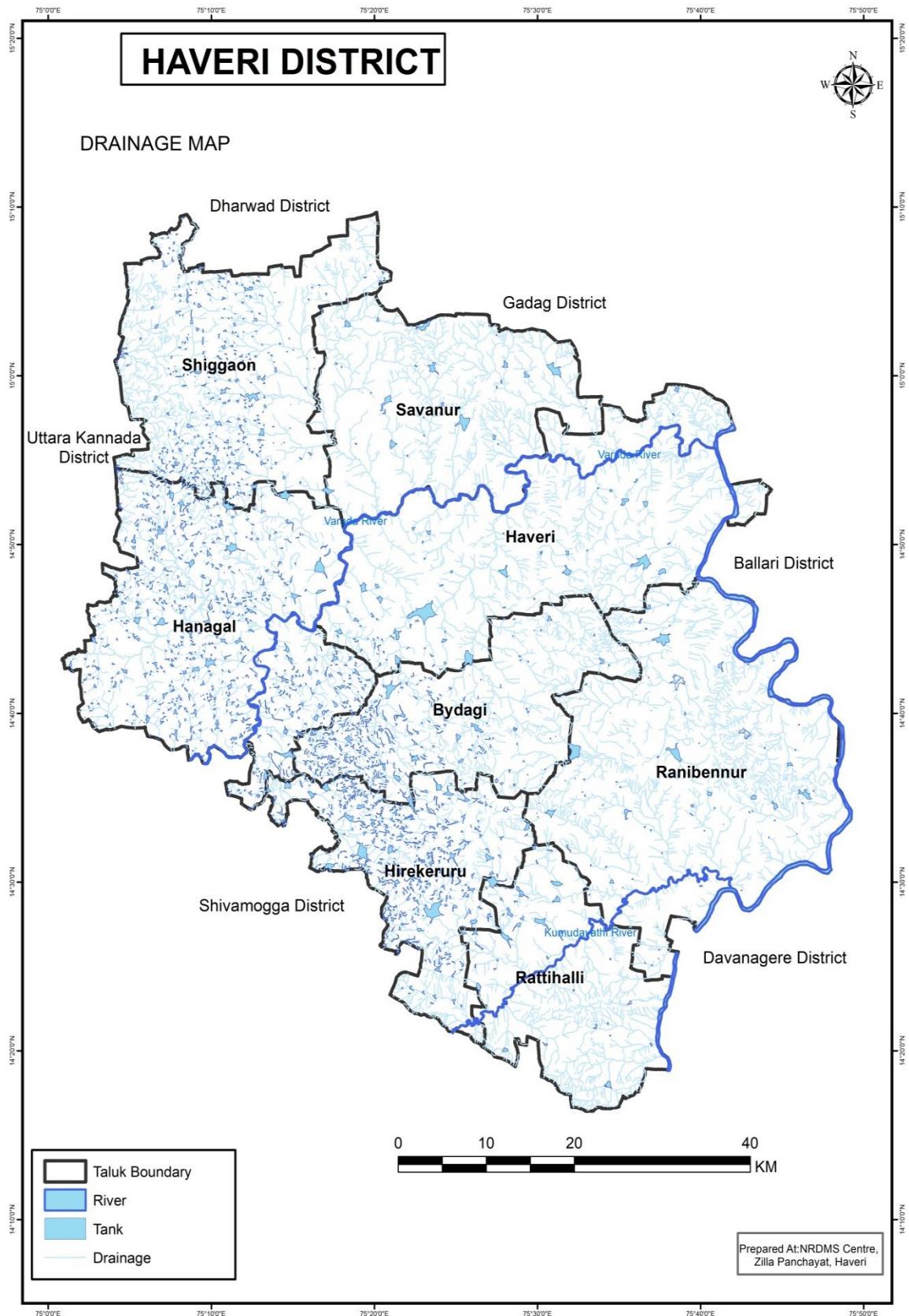
<b>Title of work</b>	GIS-based Action Plan for Climate Change and Human Health.
<b>Department Name</b>	National Vector Borne Disease Control Programme (NVBDCP) Office, Haveri
<b>Objectives</b>	For Malaria, implementing <a href="#">Geographical Information Systems</a> (GIS) mapping, and conducting environmental management and public awareness campaigns. In this regard natural resource was prepared and submitted.
<b>Data Used</b>	Land Use –Land cover Map, Water bodies Maps ,District Boundary, Taluk Boundary date used.
<b>Data Process</b>	Using above mention layers LULC and water bodies maps was prepared and submitted to NVBDCP Office, Haveri
<b>Type of Data Provided</b>	JPEG Maps ( <b>Map-6to 7</b> )

**Map6:**





Map7:

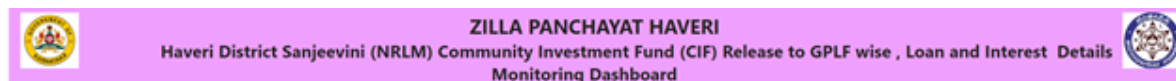
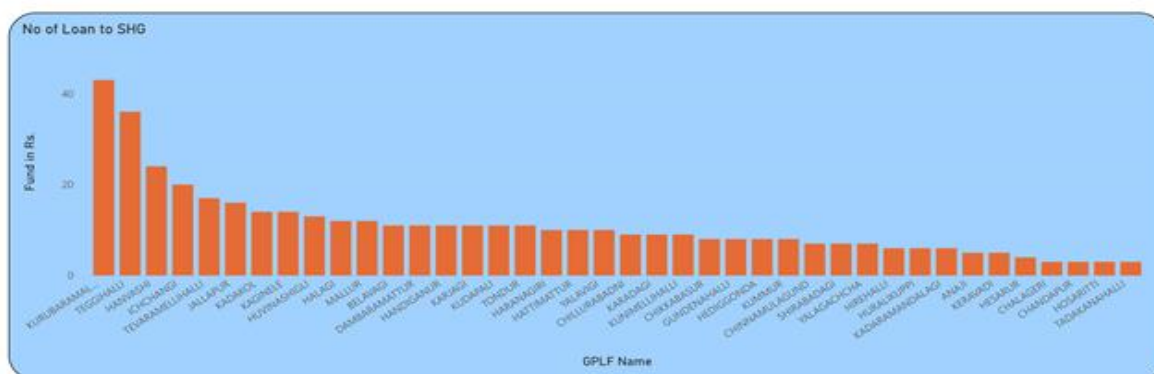


### Activity: 5

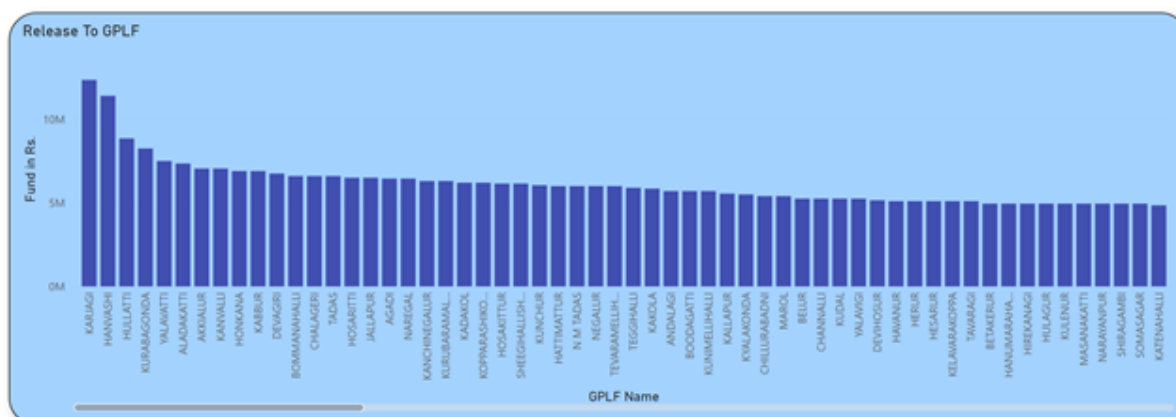
<b>Title of work</b>	Haveri District Sanjeevini (NRLM) Community Investment Fund (CIF) Release to GPLF wise , Loan and Interest Monitoring Dash Board
<b>Department Name</b>	ZillaPanchayat Office Haveri
<b>Objectives</b>	CEO, ZP Haveri instructed to create a dashboard using Power BI Software to monitor NRLM ) Community Investment Fund (CIF).
<b>Data Used</b>	Power BI Software & Gram Panchayat Boundary (.shp)
<b>Data Process</b>	Integrated Google sheet data to in Power BI software and created dashboard.
<b>Type of Data Provided</b>	Web Link and PPT format



Taluk: All Year: 2020-21



Taluk: All Year: All





## 6. Training Programmes Attended

- Attended 1 day workshop conducted by EMPRI and KSSCT on 15/05/2025 at Haveri regarding Climate Change.

Photograph1:



- Attended 1 day training program conducted by MGNREGA & KRSAC on 09/05/2025 at KRSAC, Bengaluru regarding KGIS Portal for Road Side Plantation.

## 7. Training Imparted to Line Departments

- Provided training to Forest department staff regarding KGIS Portal for Road Side Plantation in Haveri district on 26/05/2025 & 27/05/2025.
- Provided training to NRLM staff regarding Sanjeevini (NRLM) fund related information collection and updation in Haveri district on 10/07/2025 .

## 8. Science Outreach Activities

No Science Outreach Activities were conducted during this period.

## 9. Conclusion

### • Summary of Activities and Key Findings:

During this period district NRDMS center, ZP Haveri provided various Maps, data and report to ZillaPanchayat Office, Deputy Commissioner Office and various line department, pertaining to implementation of various activities and assist district administration in disaster management. And assist KSCST in Ranibennur Blanket for GI registration.

### • Commitment to Improve NRDMS Activities:



District NRDMS Centre ZP Haveri is committed to provide quality and scientific assistance to department for implementation of developmental activities in district.

District NRDMS center is also committed to update the existing data base as up to date to enhance its performance and to assist the departments.

Centre is also committed to learn and update our self to latest GEO SPATIAL technology and other software to improve our efficiency.

## **10. Annexures**

### **District Maps:**

**Map 1:** Location map of Haveri District.

**Map 2:** Ranebennur Blanket Production area mapping.

**Map 3:** Sand Mine and Stack Yard Location.

**Map 4:** Map Showing Vulnerable Village/Town due to Flood in Haveri District.

**Map 5:** Topographical Map of Haveri District.

**Map 6:** Land use /Land Cover Map of Haveri District.

**Map 7:** Drainage Map of Haveri District.

**Photograph 1:** Attended 1 day workshop conducted by EMPRI

**Table 1:** Showing administrative details of Haveri district.

\*\*\*\*\*