

***NATURAL RESOURCES DATA
MANAGEMENT SYSTEM
(NRDMS)***

***MONTHLY ACTIVITY REPORT
April - July 2025***

***Submitted by
District NRDMS Centre
Zilla Panchayat,
Gadag***



***Submitted to
Karnataka State Council for
Science and Technology (KSCST)
Indian Institute of Science Campus,
Bengaluru – 560012***

Table of Contents

Sl No	Particulars	Page Number
1	Basic Information of District	3
2	Background of District NRDMS Centre, Gadag	3
3	A. Geographical Features	3-4
	B. Location & Boundaries	4
	C. Topography	4
	D. Climate	4-5
	E. Natural Resources	5-6
	F. Major Rivers/Water Sources	6-7
4	Spatial and Non-Spatial Data available in District	7-13
5	NRDMS Centre Activities (April to July-2025)	14-34
6	Training Programmes Attended	35
7	Training Programmes Imparted to Line Department	35
8	Science Outreach Activities	35
10	Conclusion	35
11	Annexures	36

1. Basic Information of Gadag District:

District Name: Gadag

Division: Belagavi

District Establishment Year: 1997

Headquarter: Gadag-Betageri City

Current CPO (I/C): C. R. Mundaragi, Deputy Secretary, Zilla Panchayat, Gadag.

Current CEO (CC): C.N.Sreedhara, IAS, Deputy Commissioner, DC Office, Gadag.

2. Background of District NRDMS Centre, Gadag:

NRDMS programme aims to analyze the evolution of methodologies and techniques for formulating development strategies. In a scenario of large diversity of data sets, data users and data generating agencies, the programme aims at developing and demonstrating the use of spatial decision support tools for integrated planning and management of resources at the local level.

Gadag district was new district carved out of undivided Dharwad district in the year 1997 and District NRDMS Centre was established in the year 2007-08 at Zilla Panchayat Office. District NRDMS Centre is been actively involved in providing Geospatial support to Zilla Panchayat office, District administration and line departments of the districts for better planning and execution of development work.

3. Geographical Features:

A. Location & Boundaries:

Gadag district is located in northern parts of Karnataka and situated in between north latitudes of 15° 00' and 15°55' and east longitudes of 75°15' and 76°00'. It is bounded by Koppal and Vijayanagar district on east, by Bagalkote district and Belagavi district on north, Dharwad district on West and Haveri district in the South. Location Map of Gadag district is Shown in below **Map-1**.

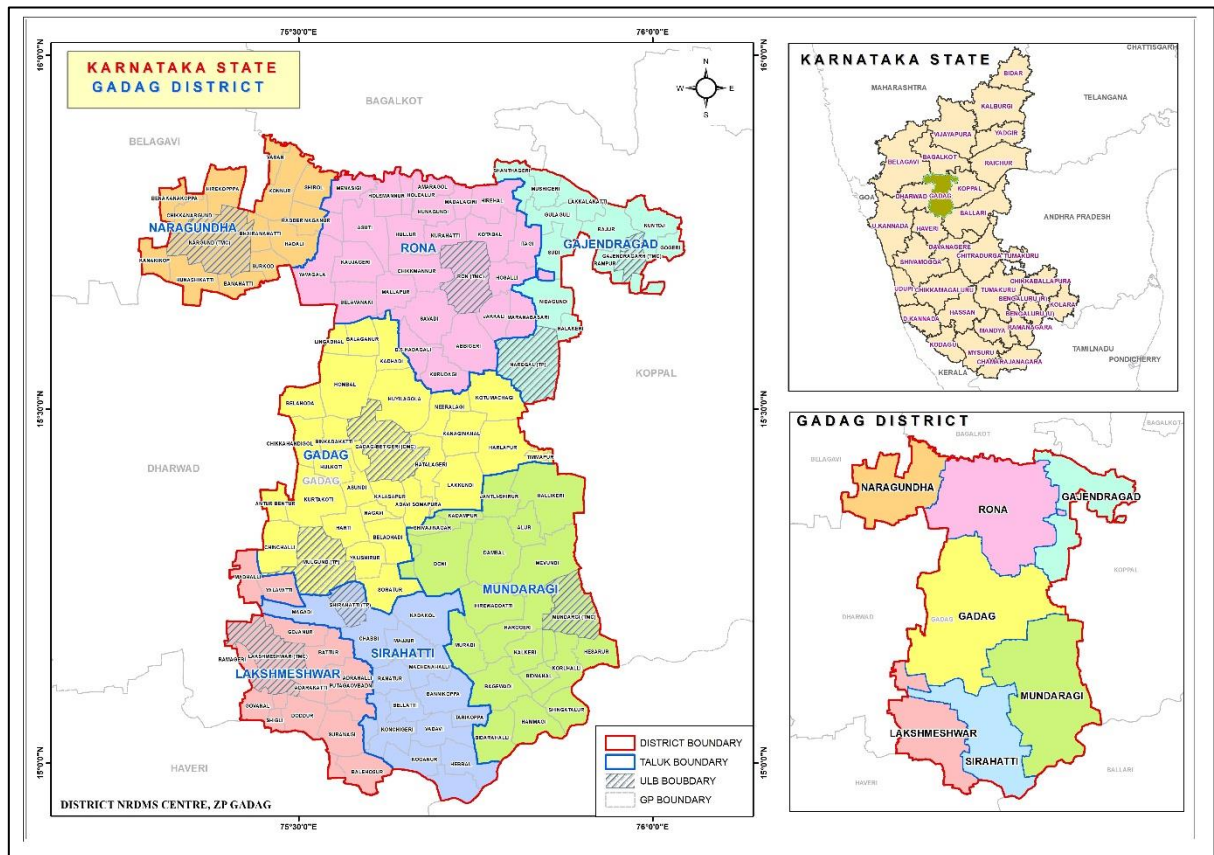
For administrative convenience Gadag district has been divided into 7 talukas with 319 Villages. Gadag district consists of contains 13 Hoblies, 9 Urban Local bodies and 122 Gram Panchayats. The details are given below in **Table-1**.

Table - 1 showing administrative details of Gadag district.

SL No	Taluk	No of Villages	No of Hoblis	No of GP's	No of ULB's
1	Gadag	61	2	27	2

2	Gajendragad	40	2	13	2
3	Laxmeshwar	34	1	14	1
4	Mundaragi	54	2	19	1
5	Nargund	30	2	13	1
6	Rona	53	3	22	1
7	Shirahatti	47	1	14	1
Grand Total		319	13	122	9

Map 1: Location map of Gadag District.



B. Topography:

Gadag District, located in the western part of northern Karnataka, India, lies on the Deccan Plateau with an elevation range of 300 to 750 meters above mean sea level, averaging around 597 meters. The district's topography is characterized by flat to gently undulating terrain, with the Kappatagudda (or Kappath) hills being a notable feature, known for their medicinal plant diversity. The region is bordered by the Malaprabha River in the north and the Tungabhadra River in the south, which influence its landscape and drainage patterns. Black soil predominates across the district, supporting agriculture, though patches of red sandy soil are also present.

C. Climate:

Gadag District experiences a semi-arid to moderate climate typical of the Deccan Plateau, characterized by distinct seasonal variations. Below is a concise overview of the climate:

Temperature:

Maximum: Up to 42°C during peak summer months (April and May).

Minimum: Around 16°C in winter, particularly in December and January.

Average annual temperature ranges between 20°C and 35°C.

Rainfall:

Average annual rainfall is approximately 612.5 mm.

Most precipitation occurs during the southwest monsoon (June to September) and, to a lesser extent, the northeast monsoon (October to November).

The district lies in a rain-shadow region, resulting in relatively low rainfall compared to coastal Karnataka. Seasons of Gadag district is explained as below.

Summer (March to May): Hot and dry, with temperatures often exceeding 40°C.

Monsoon (June to September): Moderate rainfall, with the southwest monsoon bringing the bulk of the precipitation.

Winter (December to February): Cool and pleasant, with temperatures dropping to 16–20°C at night.

Humidity and Wind: Humidity levels are moderate, higher during the monsoon season (60–80%) and lower in summer (20–40%).

The district experiences consistent winds, particularly in elevated areas like the Kappatagudda hills, making it suitable for wind energy generation.

D. Natural Resource:

Gadag District possesses a variety of natural resources that support its economy, particularly agriculture, and contribute to its ecological and industrial landscape. Below is a concise overview of the key natural resources in Gadag District:

Soil Resources:

Black Soil: Predominant across the district, this fertile soil is ideal for crops like cotton, groundnut, jowar, wheat, and pulses, which are major agricultural outputs.

Red Sandy Soil: Found in patches, particularly in areas like Gajendragad, this soil supports certain crops and influences local farming practices.

Water Resources:

Rivers: The Malaprabha River in the north and the Tungabhadra River in the south are critical for irrigation and water supply. These rivers support agriculture and provide water for domestic use.

Reservoirs and Tanks: The Magadi reservoir, home to the Magadi Bird Sanctuary, and numerous historic stepwells and tanks facilitate irrigation and groundwater recharge.

Groundwater: Available in moderate quantities, though overexploitation in some areas has led to concerns about sustainability.

Mineral Resources:

Iron Ore: Small deposits are present, though not extensively mined compared to other Karnataka districts like Bellary.

Limestone and Clay: Used in local construction and small-scale industries, particularly for cement and brick production.

Gold: Traces of gold have been historically noted in areas like Gadag town, but large-scale mining is not significant.

Forest Resources:

Forests cover approximately 7% of the district's 4,656 sq. km area, primarily consisting of shrub and dry deciduous forests. The Kappatagudda Hills are a biodiversity hotspot, rich in medicinal plants and herbs, which are a valuable resource for traditional medicine and local communities.

Timber and non-timber forest products, such as fodder and fuelwood, support rural livelihoods.

Agricultural Resources:

The district's fertile soils and water resources enable the cultivation of crops like cotton (a major cash crop), groundnut, jowar, maize, wheat, pulses, and oilseeds.

Horticulture crops, including mangoes, guava, and sapota, are grown in smaller quantities, supported by the region's climate.

Renewable Energy Potential:

Gadag is a hub for wind energy, with numerous windmills installed due to favorable wind conditions on the Deccan Plateau. The district hosts one of India's largest wind energy farms, contributing to renewable energy production.

Solar energy potential is also significant, given the region's high solar insolation.

Biodiversity:

The Magadi Bird Sanctuary, located at the Magadi reservoir, supports a variety of migratory birds, including bar-headed geese, making it a key ecological resource. The

Kappatagudda hills harbor diverse flora and fauna, including rare medicinal plants, which are a resource for both conservation and traditional use.

These resources, particularly the fertile soils, water bodies, and renewable energy potential, drive Gadag's agrarian economy and industrial activities like textile production and wind power generation. However, sustainable management is crucial to address challenges like groundwater depletion and soil erosion in some areas.

E. Major Rivers/Water Resource:

Gadag district relies on a combination of rivers, reservoirs, and other water sources for its water supply, primarily for agriculture, drinking, and industrial purposes. Below is a detailed overview of the major rivers, reservoirs, and water sources in Gadag district,

Malaprabha River:

The Malaprabha River is the primary river flowing through Gadag district. It is a significant water source for irrigation and drinking water in the region. Originating in the Western Ghats near Jamboti in Karnataka, it flows eastward through Belagavi and Gadag districts before joining the Krishna River in Bagalkot district.

The river supports extensive irrigation facilities in Gadag, contributing to the district's agricultural productivity, particularly for crops like pulses, oilseeds, and horticultural produce. The Malaprabha Dam, located upstream in Belagavi district, plays a critical role in regulating water flow to Gadag.

The Malaprabha River has several tributaries, including the Bennihalla and Hirehalla, which further enhance the irrigation potential in Gadag.

Tungabhadra River:

The Tungabhadra River, a major tributary of the Krishna River, flows along the southern boundary of Gadag district. It is formed by the confluence of the Tunga and Bhadra rivers in Shimoga district and flows through parts of Karnataka and Andhra Pradesh.

A Barrage has been constructed across river Tungabhadra in Hammagi Village in Mundaragi Taluka, the dam height is 509 Mts while storage capacity is limited to 507.5 Mts, this barrage supports irrigation in southern parts of the district through canal systems and reservoirs. The Tungabhadra Dam, located downstream, indirectly aids water management in the region.

Apart from above mentioned water source Gadag district is also mainly depended on Ground water for domestic, agriculture and industrial uses.

4. Spatial & Non-Spatial Data:

Status Code : Meaning

CC : Computerised.
 ND : Not Digitized
 NA : Not Procured
 NR : Not Relevant
 NF : Not Finalised

SPATIAL DATABASE

Sector / Subsector	Scale	Source	Survey / Publn. Year	Area covered	Status Code	File Format
1. Natural Resources						
Land						
1. Topography						
Contour Map	30 Mtr	ASTER DEM		District	CC	.Shp
Slope Map	1:50,000	KRSAC		District	CC	.Shp
2. Geology – A						
Rock features	1:50,000	KRSAC		District	CC	.Shp
Structural features	1:50,000	KRSAC		District	CC	.Shp
3. Geology – B						
Rock features		NA				
Structural features		NA				
4. Mineral Resources		NA				
5. Geomorphology	1:50,000	KRSAC		District	CC	.Shp
6. Land use	1:50,000	KRSAC		District	CC	.Shp
7. Waste Lands		NA				
8. Soils	1:25,000	NBSS & LUP		District	CC	.Shp
9. Forest & Wildlife						
Forest type	1:50,000	KFD		District	CC	.Shp

Crown Density		NA				
Forest Category		NA				
Forest admn.	1:50,000	KFD		District	CC	.Shp
Wild Life		NA				
Water						
1.Ground water						
Hydro Geology		NA				
Hydro chemistry		NA				
Ground water budget		NA				
2.Surface water						
Drainage	1:50,000	SOI		District	CC	.Shp
Surface water bodies	1:50,000	SOI & KSRSAC		District	CC	.Shp
3.Climate		NA				

Sector / Subsector	Scale	Source	Survey / Publn. Year	Area covered	Status Code	File Format
2.Demography						
Population						
Tehsil boundary	1:50,000	SOI		District	CC	.Shp
District boundary	1:50,000	SOI		District	CC	.Shp
Current popln. distbn.	1:50,000	SOI		District	CC	.Shp
Literacy						
Levels of education		NA				
Occupation						
Village boundary	1:50,000	SOI		District	CC	.Shp
Employment						
District scenario		NA				

Employment exchange		NA				
Assets & Expenditure		NA				
Migration		NA				
Destitutes		NA				

3.Socio Economy						File Format
Industry		NA				
Developmental activity		NA				
4.Agro Economy						
Land Utilisation						
Private Land		NA				
Common property		NA				
Land Ownership pattern						
General scenario		NA				
Farmer's holdings		NA				
Principal crops		NA				
Irrigation						
Minor irrigation						
Canals	1:50,000	DLR & SS (KRSRAC)	District	CC	.Shp	
Tube wells		NA				
Dug wells		NA				
Tanks	1:50,000	DLR & SS (KRSRAC)	District	CC	.Shp	

Lift irrigation		NA				
<i>Major irrigation</i>						
Reservoirs	1:50,000	DLR & SS(KSRS AC)	District	CC	.Shp	
Anicuts		NA				
Agricultural implements						
Animal husbandry	1:50,000	AHVS	District	CC	.Shp	
Pisciculture		NA				
Plantation		NA				

Sector / Subsector	Scale	Source	Survey / Publn. Year	Area covered	Status Code	File Format
5.Infrastructure						
Communications						
Post offices	1:50,000	Dept of Posts	District	CC	.Shp	
Telecommunication		NA				
Drinking water		NA				
Educational facilities	1:50,000	DDPI	District	CC	.Shp	
Electricity		Land Records				
Financial institutions		NA				
Markets		NA				
Health	1:50,000	DHO	District	CC	.Shp	
NGO's		NA				
Tourism	1:50,000	KSTDC	District	CC	.Shp	
Transport	1:50,000	PWD & SOI	District	CC	.Shp	
6.Miscellaneous						

District map with taluks	1:50,000	SOI	District	CC	.Shp	
District & taluk boundaries	1:50,000	SOI	District	CC	.Shp	
District map with hoblies	1:50,000	DLR & SS	District	CC	.Shp	
Village boundary with settlement	1:50,000	SOI/KSR AC	District	CC	.Shp	
Police station details	1:50,000	SP	District	CC	.Shp	
Details on Assembly constituencies	1:50,000	DC	District	CC	.Shp	
Gram Panchayths & Zilla Panchayaths, its jurisdiction for all taluks	1:50,000	DC	District	CC	.Shp	

Additional Data

Cadastral Boundary	1:7780	SSLR & KRSRAC	District	CC	.Shp	
--------------------	--------	---------------	----------	----	------	--

Non-Spatial Database

Sector / Subsector	Source	Survey / Publn. Year	Area covered	Status Code	File Format
1. Natural Resources					
<i>Land</i>					
1. Topography					
Contour				NR	
Slope				NR	
2. Geology – A					
Rock Features	MGD			NR	
Structural features				NR	
3. Geology – B					
Rock features				NR	

Structural features				NR	
4. Mineral Resources	MGD			NR	
5. Geomorphology				NR	
6. Land use				NR	
7. Waste Lands				NR	
8. Soils	NBSS & LUP			NR	
9. Forest & Wildlife					
Forest type				NR	
Crown Density				NR	
Forest Category				NR	
Forest admn.				NR	
Wild Life				NR	
Water					
Ground water					
Hydro Geology	MGD			NR	
Hydro chemistry	CGWB			NR	
Ground water budget	MGD			NR	
Surface water					
Drainage				NR	
Surface water bodies				NR	
Climate	IMD			NR	

2. Demography					File Format
Population					
Tehsil boundary	DLR & SS			CC	XLS
District boundary				CC	XLS

Current popln. distbn.	DES			CC	XLS
Literacy					File Format
Levels of education				NA	
Occupation					
Village boundary	DES			NA	
Employment					
District scenatio	EO			NA	
Employment exchange	EO			NA	
Assets & Expenditure					
Migration					
Destitutes					

3. Socio Economy					File Format
Industry	DIC			NA	
Developmental activity	DIC			NA	

4. Agro Economy					File Format
Land Utilisation					
Private Land	DSO		VILLAGE	NA	
Common property	DSO			NA	
Land Ownership pattern					
General scenario	DSO			NA	
Farmer's holdings	Rev. Dept			NA	
Principal crops	JDA		Taluk	NA	
Irrigation					
<i>Minor irrigation</i>					

Canals	CADA			NA	
Tube wells	DSO			NA	
Dug wells	DSO			NA	
Tanks	MIC/ ZPE			NA	
Lift irrigation	MID			NA	
<i>Major irrigation</i>					
Reservoirs	CE (N)			NA	
Anicuts	CE (N)			NA	
Agricultural implements	Ag Census			NA	
Animal husbandry	AH&VS			CC	XLS
Pisciculture	Fisheries			NA	
Plantation				NA	
Horticulture	HD			NA	
Sericulture	SD			NA	

Sector / Subsector	Source	Survey / Publn. Year	Area covered	Status Code	File Format
5. Infrastructure					
Communications					
Post offices	SSPO/ DES		Village	NA	
Telecommunication	TDM / DES			NA	
Drinking water	ZPE			NA	
Educational facilities	DDPI			NA	
Electricity	Census			NA	
Financial institutions	LEAD bank			NA	
Markets	FACS			NA	
Health	DHO			CC	XLS
NGO's	DRS			NA	
Tourism	KSTDC			CC	XLS

Transport					
Roads	PWD			NA	
Rail network	ZPED			NA	
Air transport/HELIPAD	PWD			NA	
Vehicle census	RTO			NA	
Inland & coastal waterways				NA	
Veterinary services					
Veterinary facilities	AHVS			CC	XLS
Other veterinary serv.	AHVS				
Incidence of diseases	AHVS				
Anganwadi	D W&C			CC	XLS

Sector / Subsector	Source	Survey / Publn. Year	Area covered	Status Code	File Format
6. Miscellaneous					
Administration	DC office				
Dt. & Subdivsns.	DC office			NA	
Dt., with tehsils	ZP			NA	
Dt., with panchayat	DC			NA	
Tq., with census vil.	DC			NA	
Prices & wages				NA	
Environment				NA	

5. Major Activities Carried Out during the period of April-July 2025:

Activity -1

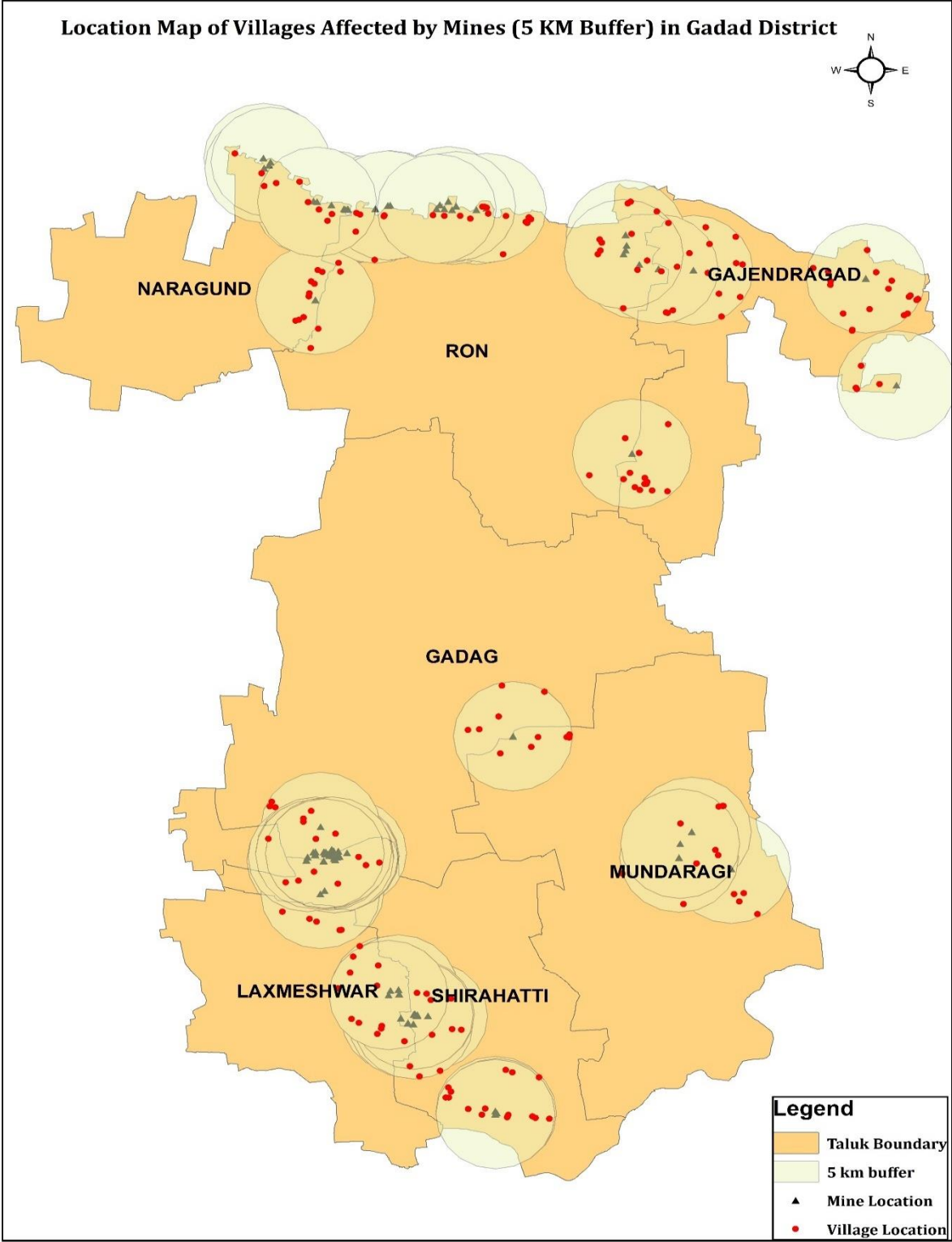
Title of work	Location Map of Villages affected by Mines (5 KM Buffer) in Gadag District
Department Name	Zilla Panchayat , Gadag
Objectives	Location Map and List of Villages (With in 5 Km Range of Mine area) which were affected by Mining activity was prepared and provided to Chief Executive Officer, Zilla Panchayat, Gadag. As this data was required for effective implementation of District Mines Fund (DMF) effectively.
Data Used	Taluk Boundary, Village Location, Mine Location (Provided by DMG, Gadag) and 5 KM Buffer of Mine Location.
Data Process	5 KM Buffer was generated for mine location using Geoprocessing toll, and Village falling under 5 KM jurisdiction was extracted using clip option
Type of Data Provided	JPEG Map (Map-2) was provided along with list of Villages was provided in Excel format. (Table-2)

Table 2: Villages List affected by Mines (5 KM from Mine Site)

Sl No	Taluk	Village	GP/ULB	LAC
1	GADAG	BALAJINAGAR	ADAVISOMAPUR	68-NARGUND
2	GADAG	CHINCHALLI	CHINCHALI	66-GADAG
3	GADAG	JALASHANKARNAGAR	ADAVISOMAPUR	68-NARGUND
4	GADAG	LAKKUNDI	LAKKUNDI	68-NARGUND
5	GADAG	MULGUND (TP)	MULGUND (TP)	66-GADAG
6	GADAG	PAPANASHI	ADAVISOMAPUR	68-NARGUND
7	GADAG	SAMBHAPUR	HATALAGERI	68-NARGUND
8	GAJENDRAGAD	AMARAGATTI	GULAGULI	67-RON
9	GAJENDRAGAD	BENACHAMATTI	KUNTOJI	67-RON
10	GAJENDRAGAD	BEVINAKATTI	GULAGULI	67-RON
11	GAJENDRAGAD	BHAIRAPUR	RAJURU	67-RON
12	GAJENDRAGAD	BOMMASAGAR	SHANTHAGERI	67-RON
13	GAJENDRAGAD	BUDIHAL	MARANABASARI	67-RON

14	GAJENDRAGA D	CHICKALAGUNDI	MUSHIGERI	67-RON
----	-----------------	---------------	-----------	--------

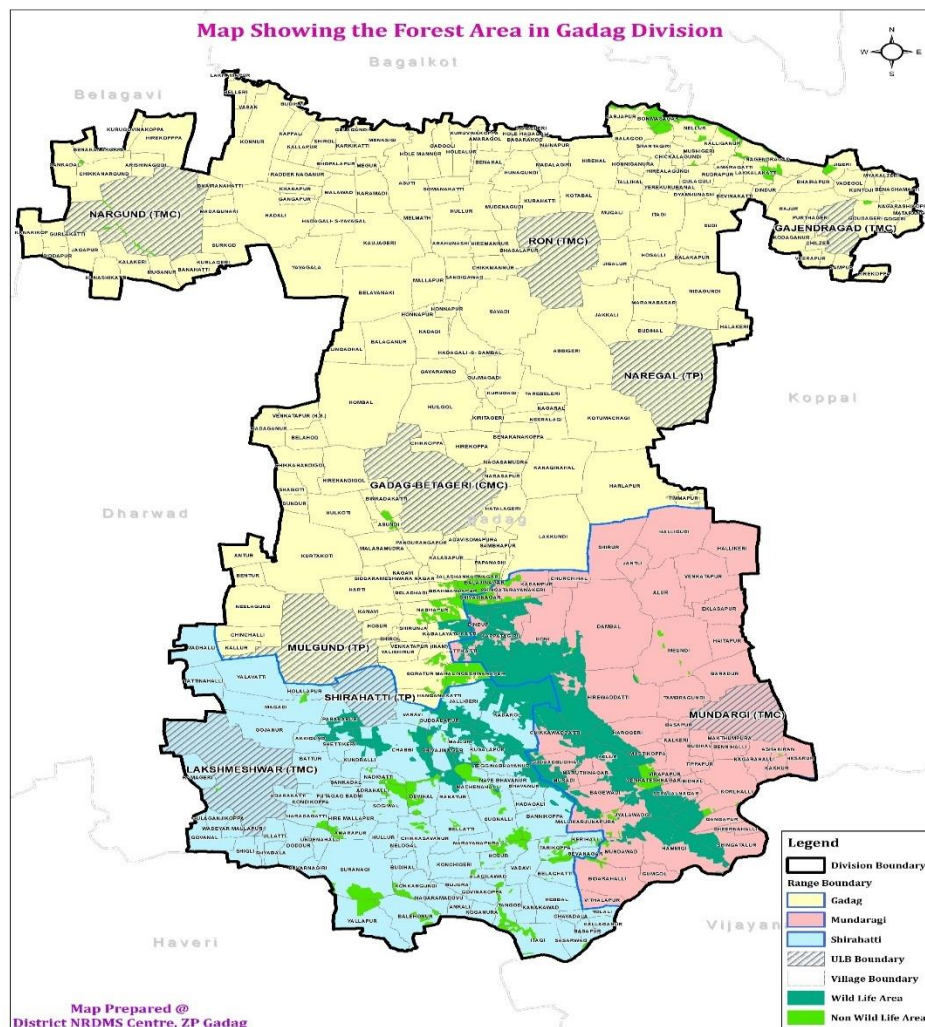
Map 2:



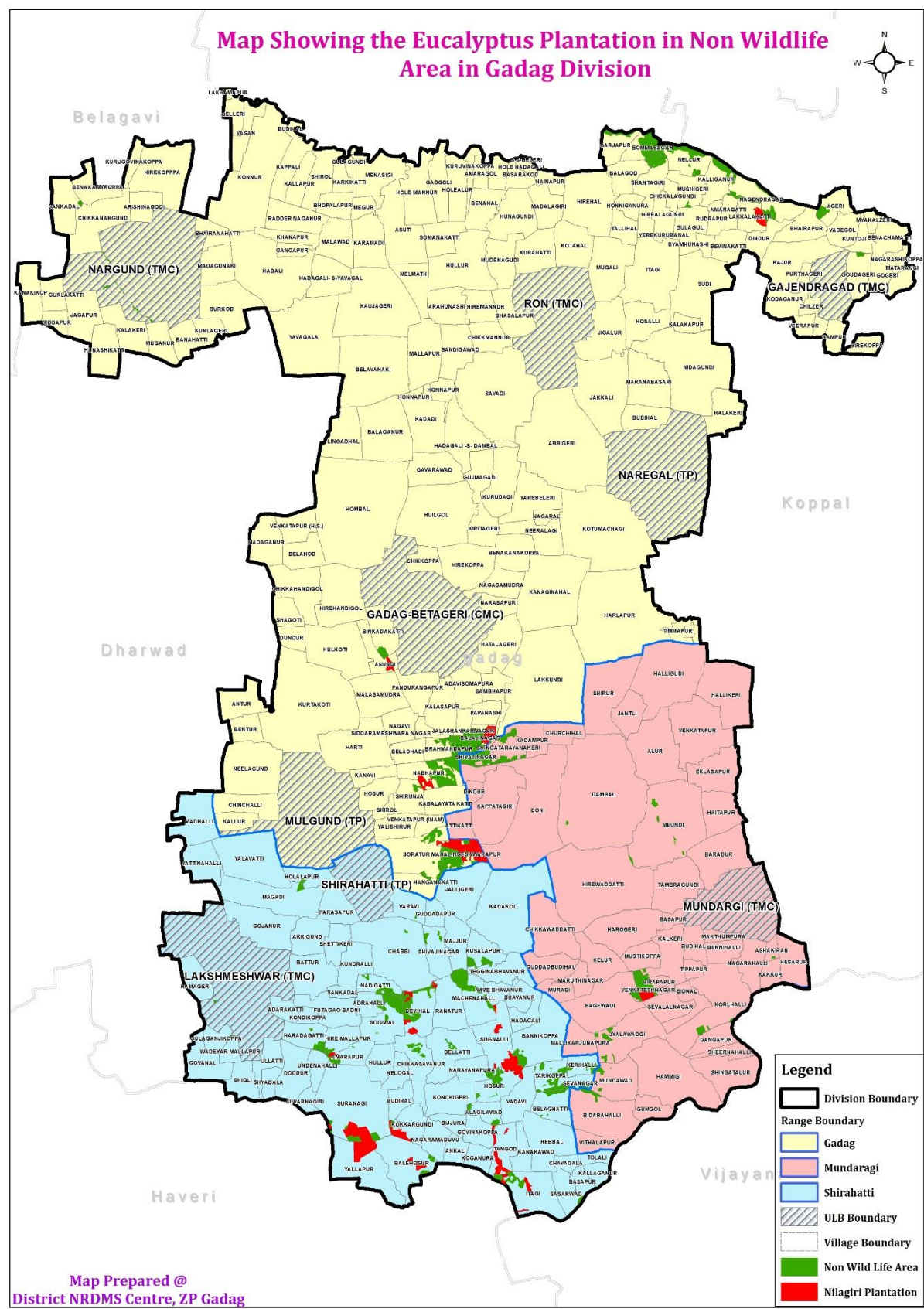
Activity -2

Title of work	Map Showing the Wild Life Area, Non-Wild Life Area and Nilgiris Plantation Blocks in Gadag Division.
Department Name	Territorial Forest Department, Gadag
Objectives	For Department reference
Data Used	Range Boundary, Forest Boundary, Cadastral Boundary Gadag and Survey Number wise data provided by department.
Data Process	Survey number wise data (Excel) provided by department was joined to cadastral boundary data (.shp) and required Map was generated and provided to department.
Type of Data Provided	JPEG Maps (Map-3 & 4)

Map: 3



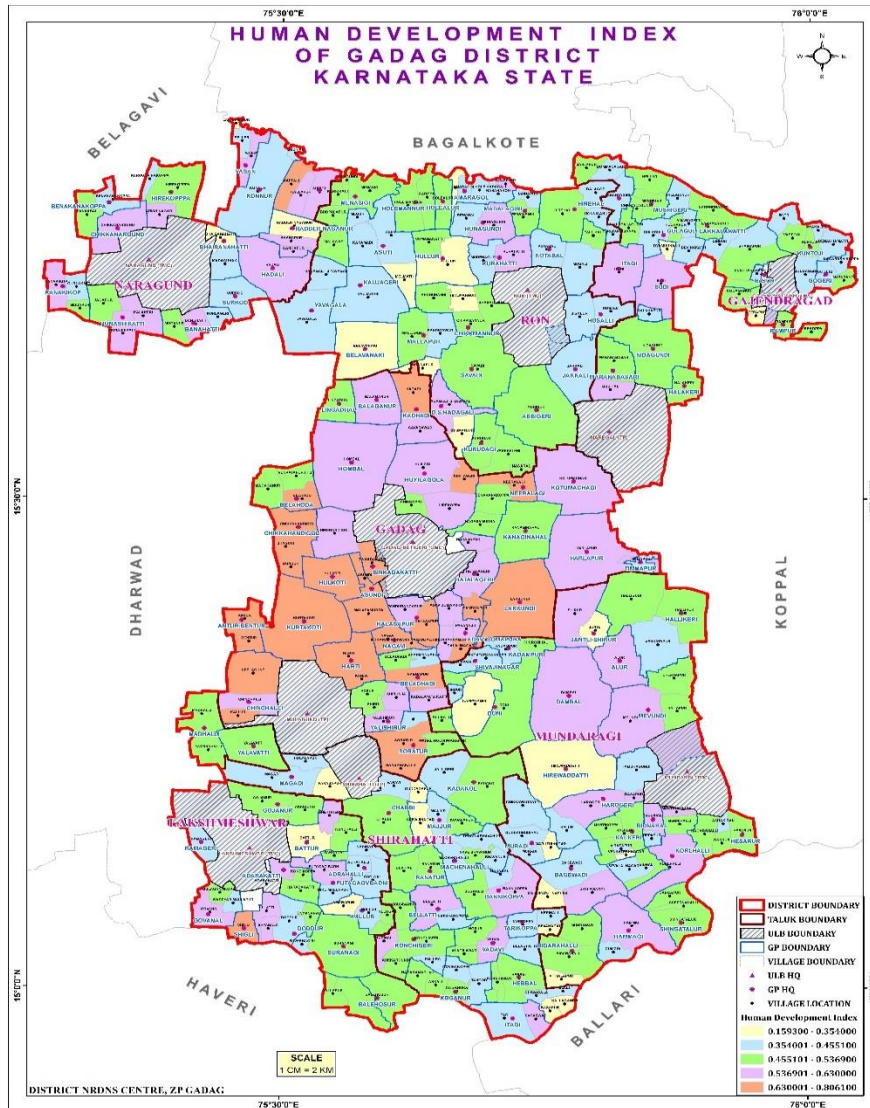
Map: 4



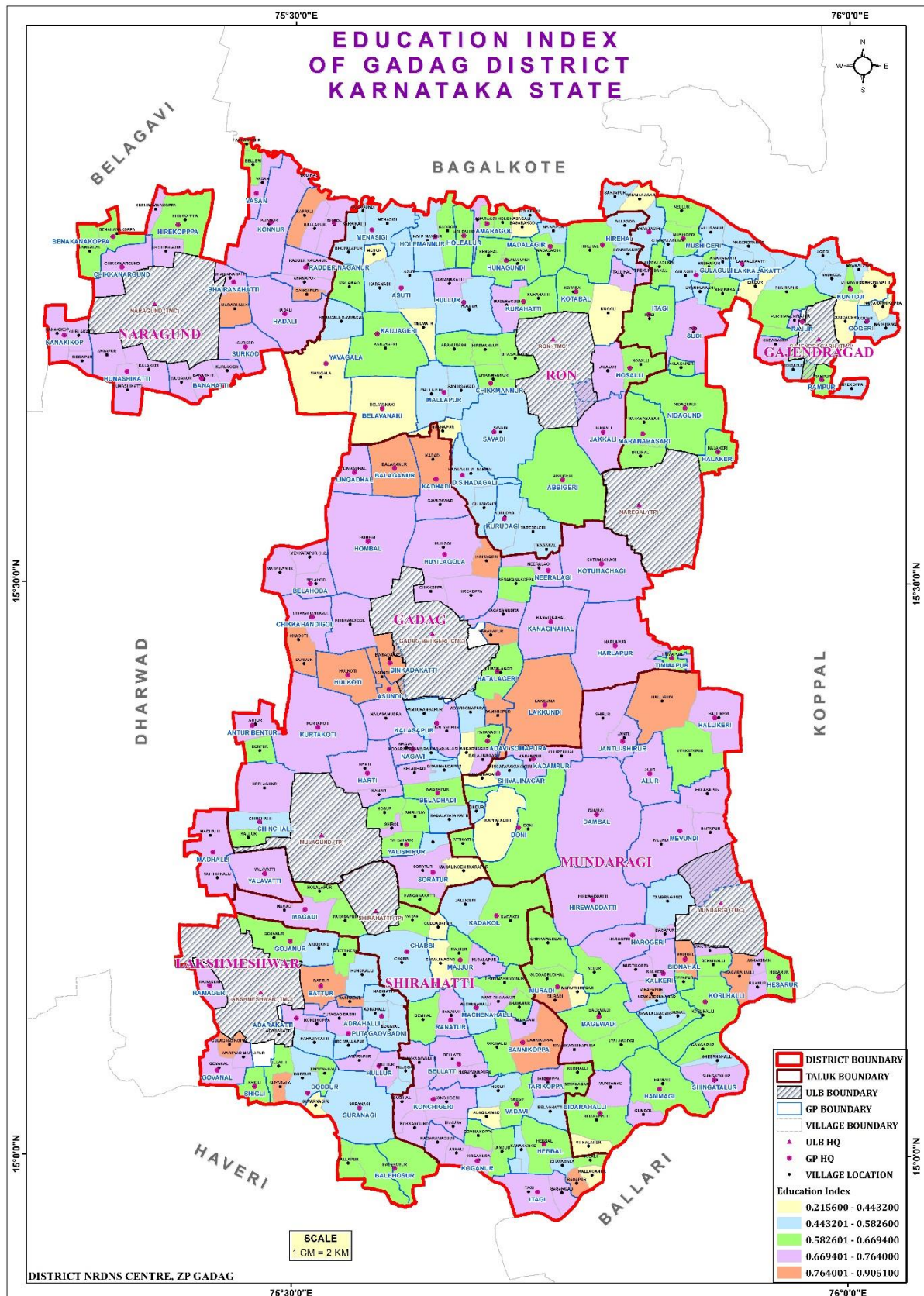
Activity: 3

Title of work	Map Showing HDI, Education, Health & Living Standard Index in Gadag District.
Department Name	Planning Section, Zilla Panchayat Office, Gadag
Objectives	For Preparation of report on HDI of Gadag district
Data Used	District Boundary, Taluk Boundary, Village Boundary and village wise data provided by department.
Data Process	Village wise data (Excel) provided by department was joined to Village boundary data (.shp) and category wise map was generated and provided to department.
Type of Data Provided	JPEG Maps (Map-5 to 8)

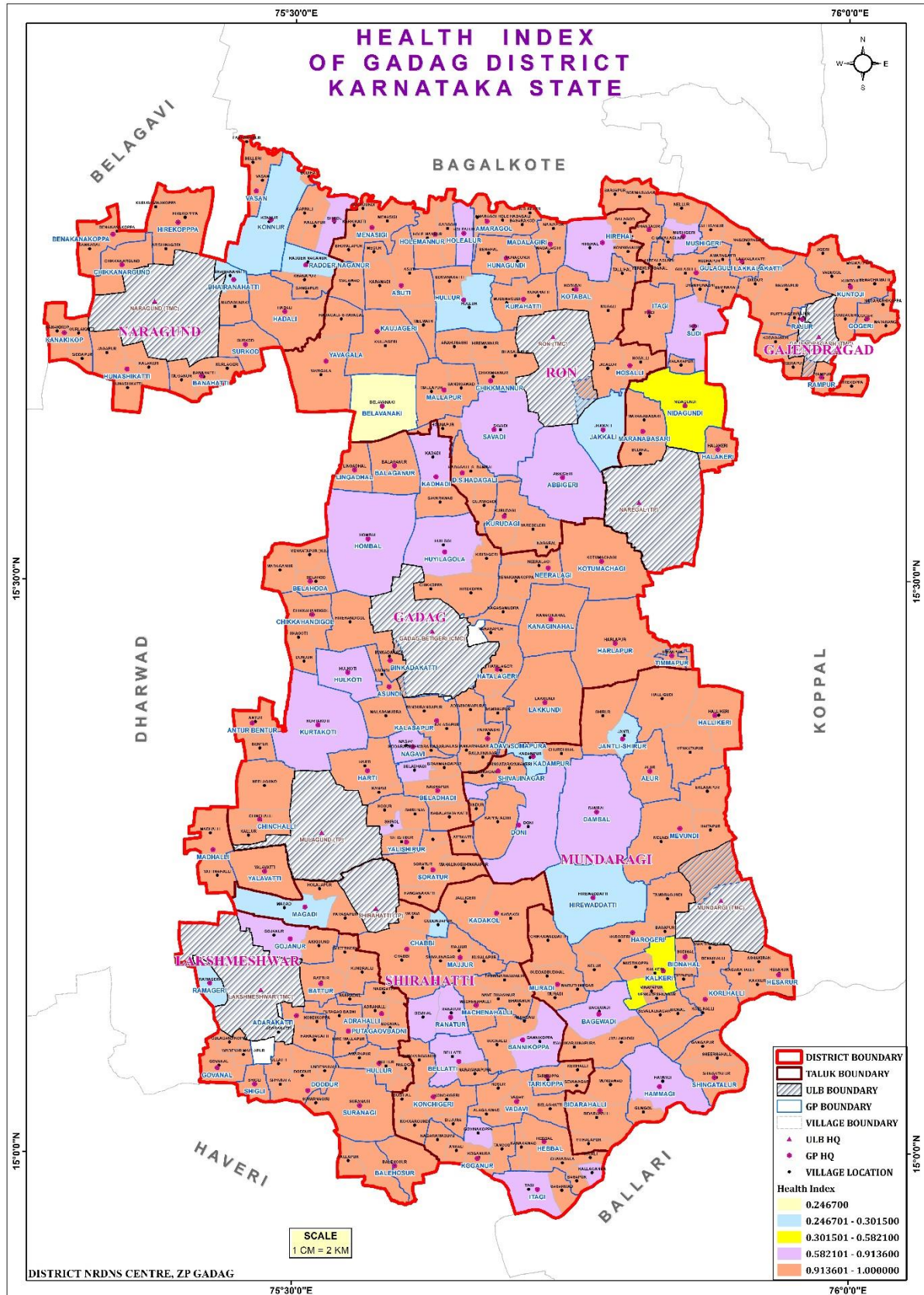
Map: 5



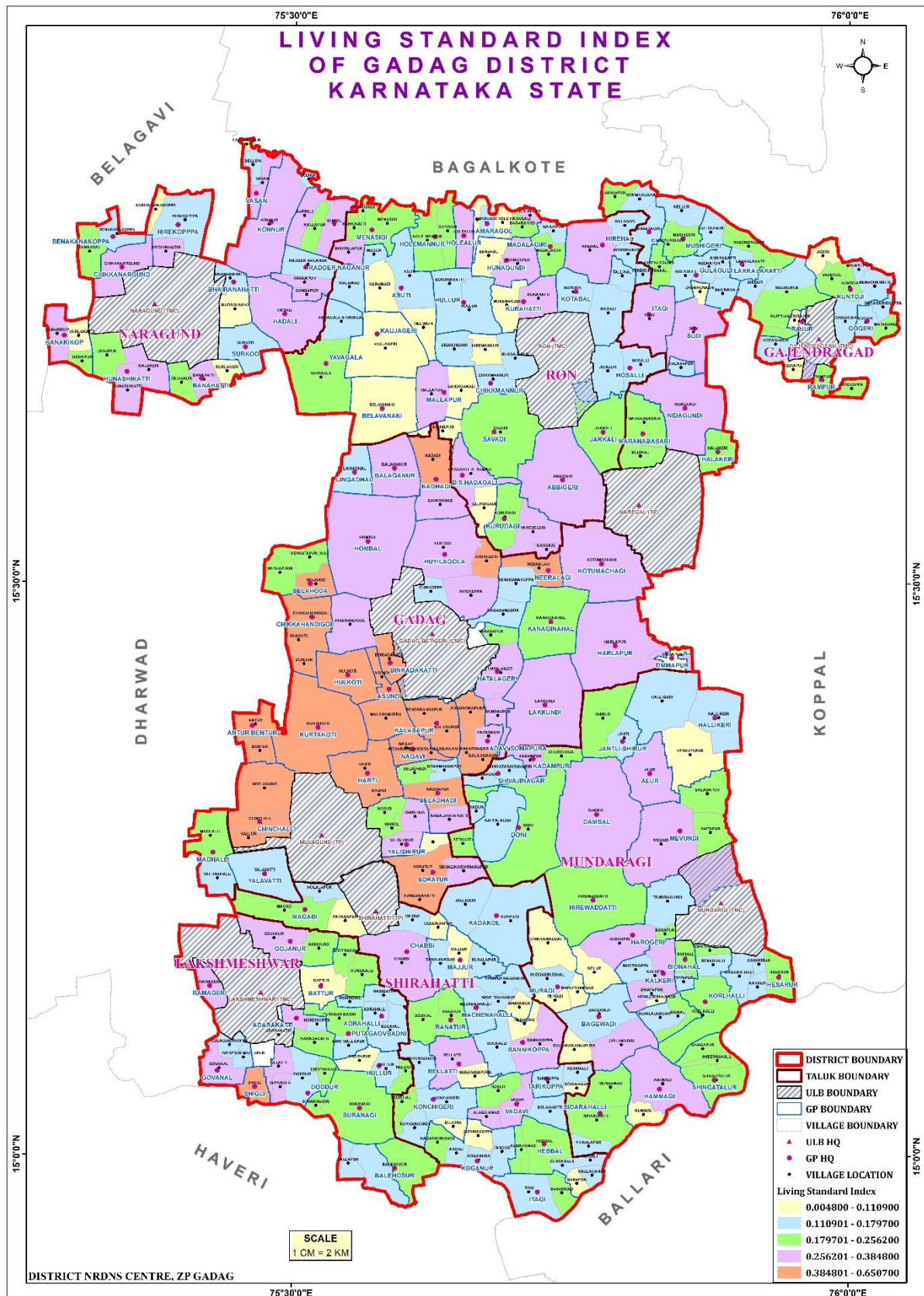
Map: 6



Map: 7



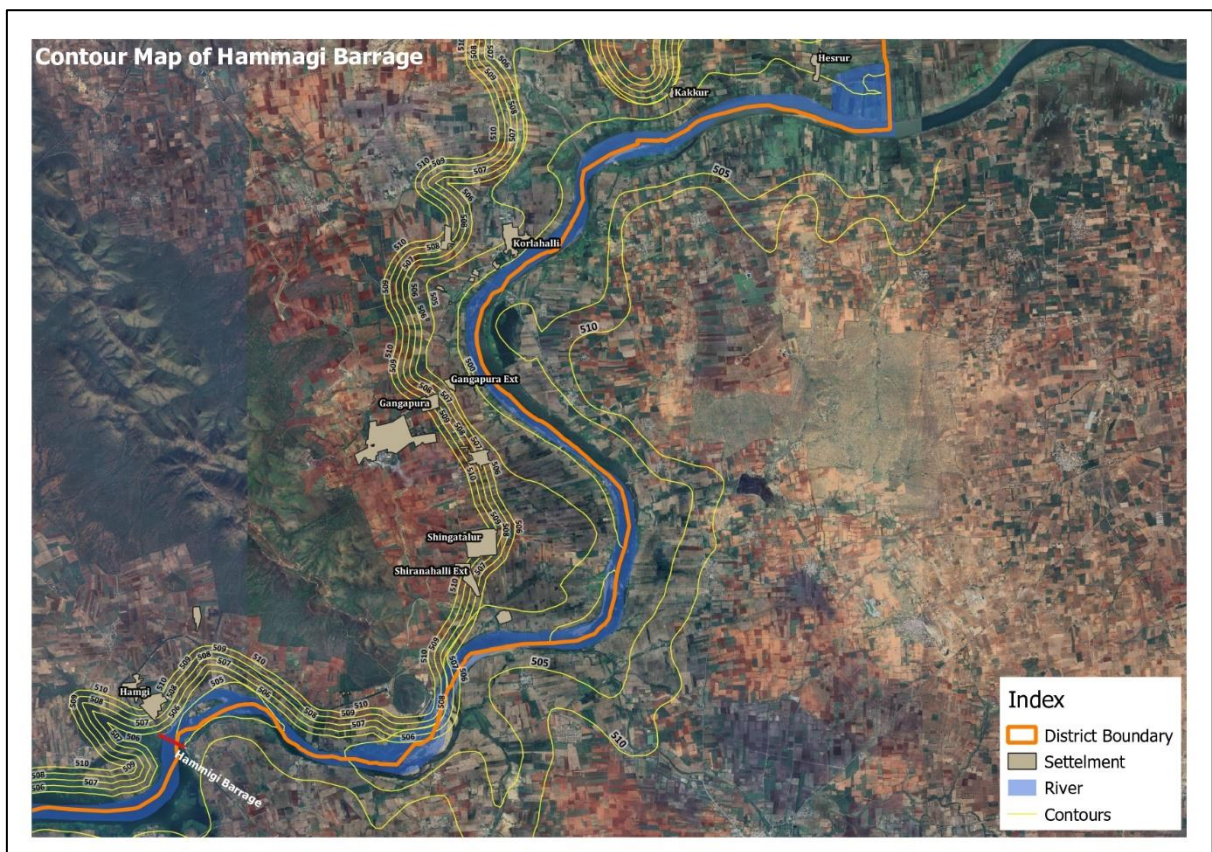
Map: 8



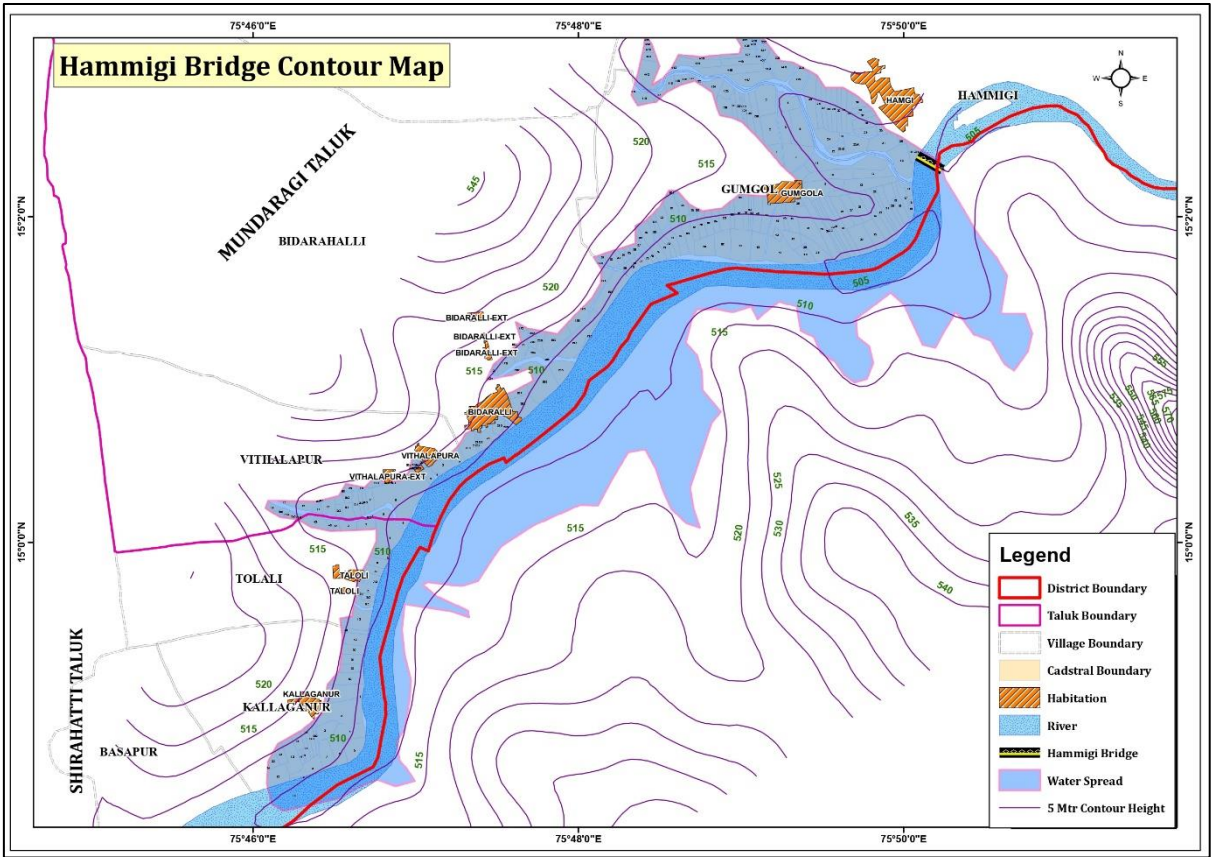
Activity: 4

Title of work	Hammagi Barrage Contour and various Maps
Department Name	Deputy Commissioner Office, Gadag
Objectives	As District administration is Planning to Increase storage Height of Dam from Existing 507 to 508. In this regard administration wanted to Know the water spread area and how much of areas are going to be submerged. In this regard Maps of downstream and upstream of the area was prepared and excel sheet showing village wise, survey number wise extent of area was prepared and submitted.
Data Used	Taluk Boundary, District Boundary, Village Boundary, Cadastral Boundary Habitation, River and Contour (5 Mts and 1 Mts)
Data Process	Extracted Elevation data for Google earth and created contour map of 1 Meter and 5 Meter intervals and. Using contour layer various maps were generated and village wise survey number which are going to submerged was extracted using clip option and provided to district administration.
Type of Data Provided	JPEG Maps (Map-9, 10 & 11) and Excel Sheet Showing Village Wise Survey number wise extent of area to be affected.

Map: 9



Map: 10



Map: 11

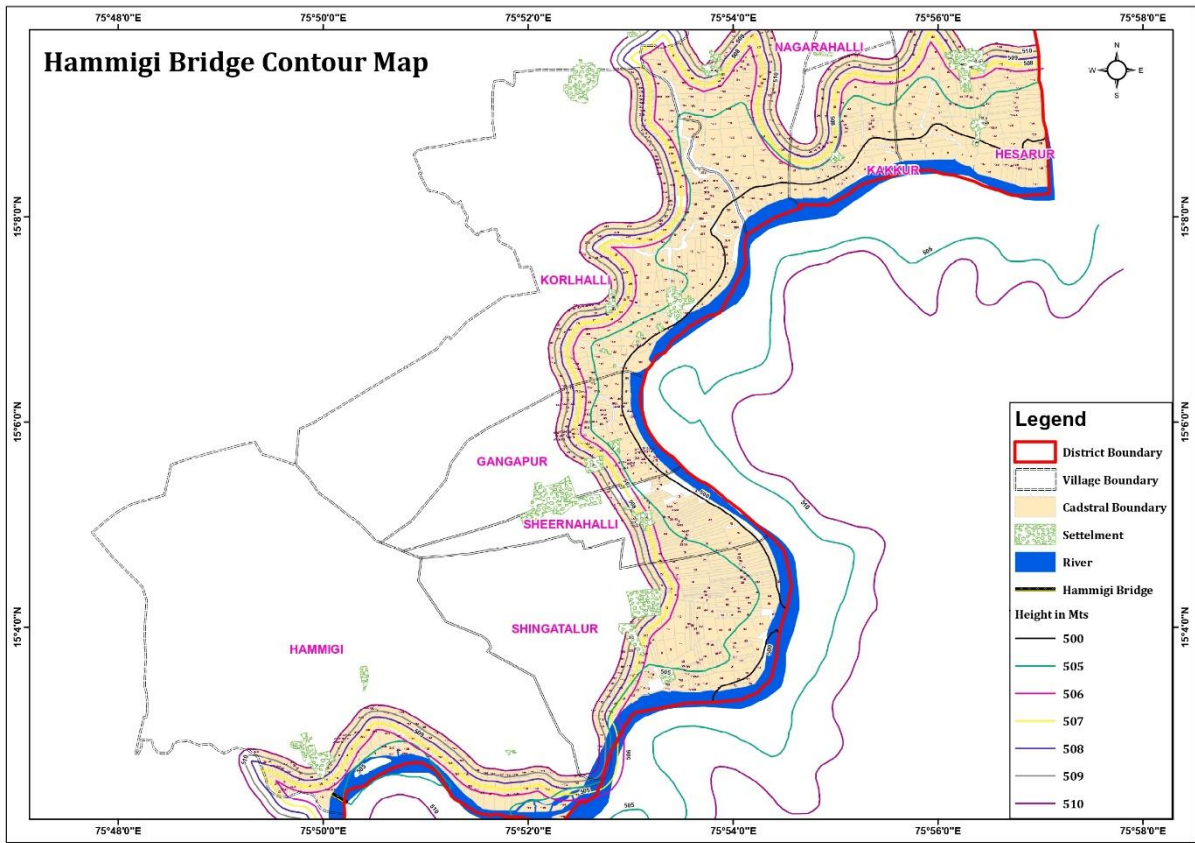


Table 3: Village wise and Survey Number wise extent of land to be affected.

Sl No	Village	Survey No	Area (Acres)	Sl No	Village	Survey No	Area (Acres)
1	Gangapura	10	1.07	35	Hammagi	113	2.53
2	Gangapura	16/2	0.97	36	Hammagi	134	6.42
3	Gangapura	16/3	0.04	37	Hammagi	135	3.86
4	Gangapura	17	3.78	38	Hammagi	136	0.10
5	Gangapura	18	4.64	39	Hammagi	137	5.80
6	Gangapura	19/1	0.02	40	Hammagi	138	5.13
7	Gangapura	19/2	3.15	41	Hammagi	14	0.36
8	Gangapura	19/3	1.88	42	Hammagi	15	1.83
9	Gangapura	32	2.84	43	Hammagi	16	2.86
10	Gangapura	6	0.40	44	Hammagi	162	1.71
11	Gangapura	67/10	0.26	45	Hammagi	163	1.03
12	Gangapura	67/11	1.33	46	Hammagi	167	4.61
13	Gangapura	67/12	1.15	47	Hammagi	168	4.53
14	Gangapura	67/9	1.39	48	Hammagi	169	4.91
15	Gangapura	68	3.24	49	Hammagi	17	0.16
16	Gangapura	69	3.67	50	Hammagi	170	6.94
17	Gangapura	7	4.52	51	Hammagi	171	5.52
18	Gangapura	71	1.80	52	Hammagi	172	3.15
19	Gangapura	73	0.43	53	Hammagi	18+224	0.19
20	Gangapura	74/5	0.39	54	Hammagi	180	3.12
21	Gangapura	75	0.43	55	Hammagi	181	4.44
22	Gangapura	76	0.04	56	Hammagi	184	4.66
23	Gangapura	77/1	1.53	57	Hammagi	185	2.73
24	Gangapura	77/1	0.01	58	Hammagi	187	0.07
25	Gangapura	77/2	0.83	59	Hammagi	188	2.69
26	Gangapura	77/2	0.08	60	Hammagi	189	3.14

27	Gangapura	77/3	1.12	61	Hammagi	190	3.62
28	Gangapura	84/1	2.50	62	Hammagi	193	1.85

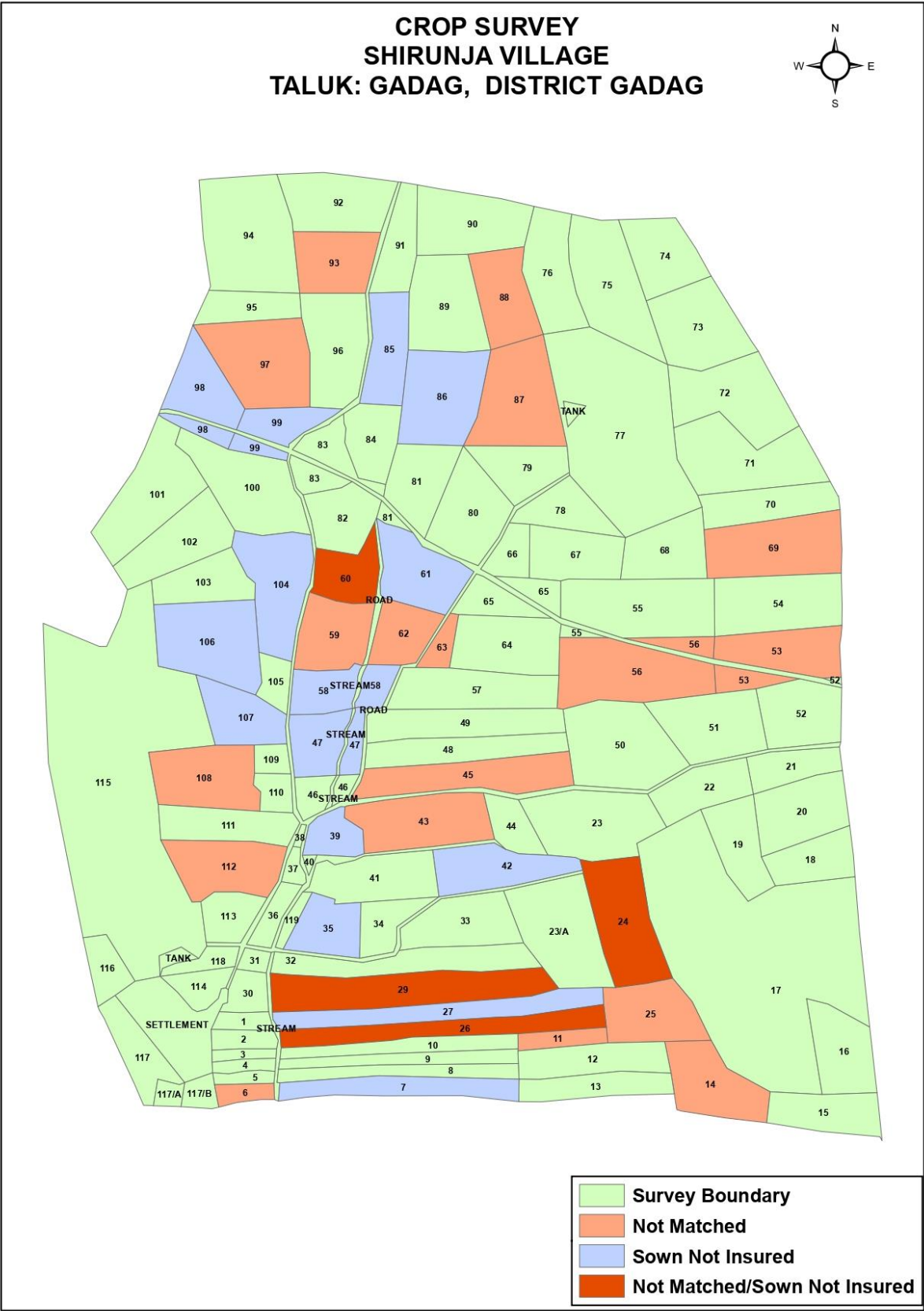
Activity: 5

Title of work	Crop Survey Maps
Department Name	Deputy Commissioner Office, Gadag
Objectives	District administration along with Agriculture department conducted Crop survey of 14 Villages to cross check for Crop insurance and crops sowed in agriculture field. Data provided by Agriculture department was linked to Cadastral boundary and map was prepared and provide map with classification such as Matched/Unmatched/ Sown but not insured .
Data Used	Village Boundary, Cadastral (Spatial Data). Hisa wise Crop Survey Details (Non-Spatial)
Data Process	Data provided by department was joined to cadastral data using JOIN option and later categorized the map based on category of provided by department in symbology option and maps was prepared and provided.
Type of Data Provided	JPEG Maps (Map-12 & 13)

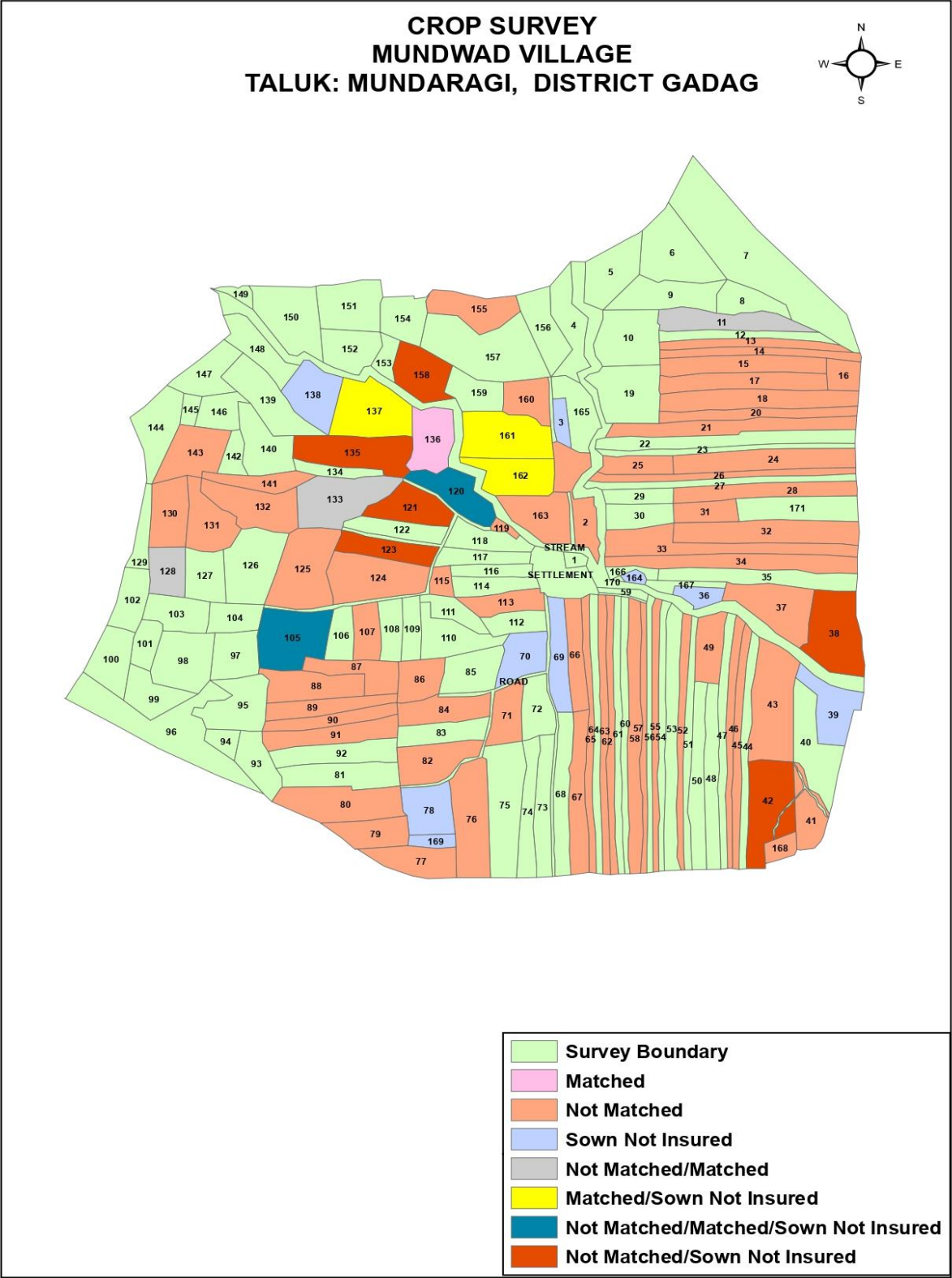
Table 4: Crop Survey data provided by department.

Taluk	Hobli	Village	SurveyNo	INSURED .CROP	SUMMER CROP_SURVE Y.CROP	Summer Matched/Not Matched	Rabi Matched/ Not Matched	Rabi or Summer Matched or Not Matched
Shirahatti	SHIRAHATTI	TANGODA	117/*/1	GROUND	GROUNDNUT	Matched	Not Matched	matched
Shirahatti	SHIRAHATTI	TANGODA	117/*/1	GROUND	GROUNDNUT	Matched	Not Matched	matched
Shirahatti	SHIRAHATTI	TANGODA	119/*/8	GROUND	GROUNDNUT	Matched	Not Matched	matched
Shirahatti	SHIRAHATTI	TANGODA	67/*/11	GROUND	FALLOW	Not Matched	Matched	matched
Gadag	GADAGA	SHIRUNDA	108/*/2	GROUND	FALLOW	Not Matched	Not Matched	Not Matched
Gadag	GADAGA	SHIRUNDA	108/*/5	GROUND	FALLOW	Not Matched	Not Matched	Not Matched
Gadag	GADAGA	SHIRUNDA	108/*/6	GROUND	FALLOW	Not Matched	Not Matched	Not Matched
Gadag	GADAGA	SHIRUNDA	11/*/1+2+3	GROUND	FALLOW	Not Matched	Not Matched	Not Matched
Gadag	GADAGA	SHIRUNDA	112/*/2	GROUND	FALLOW	Not Matched	Not Matched	Not Matched
Gadag	GADAGA	SHIRUNDA	14/*/5A	GROUND	FALLOW	Not Matched	Not Matched	Not Matched
Gadag	GADAGA	SHIRUNDA	24/*/1	GROUND	FALLOW	Not Matched	Not Matched	Not Matched
Gadag	GADAGA	SHIRUNDA	25/*/6	GROUND	FALLOW	Not Matched	Not Matched	Not Matched
Gadag	GADAGA	SHIRUNDA	26/*/1	GROUND	FALLOW	Not Matched	Not Matched	Not Matched
Gadag	GADAGA	SHIRUNDA	29/*/1	GROUND	ಬದನೆಕಾಯಿ	Not Matched	Not Matched	Not Matched
Gadag	GADAGA	SHIRUNDA	29/*/1	GROUND	ಹಸಿ	Not Matched	Not Matched	Not Matched
Gadag	GADAGA	SHIRUNDA	29/*/1	GROUND	ಕೊತಂಬರಿ	Not Matched	Not Matched	Not Matched

Map: 12



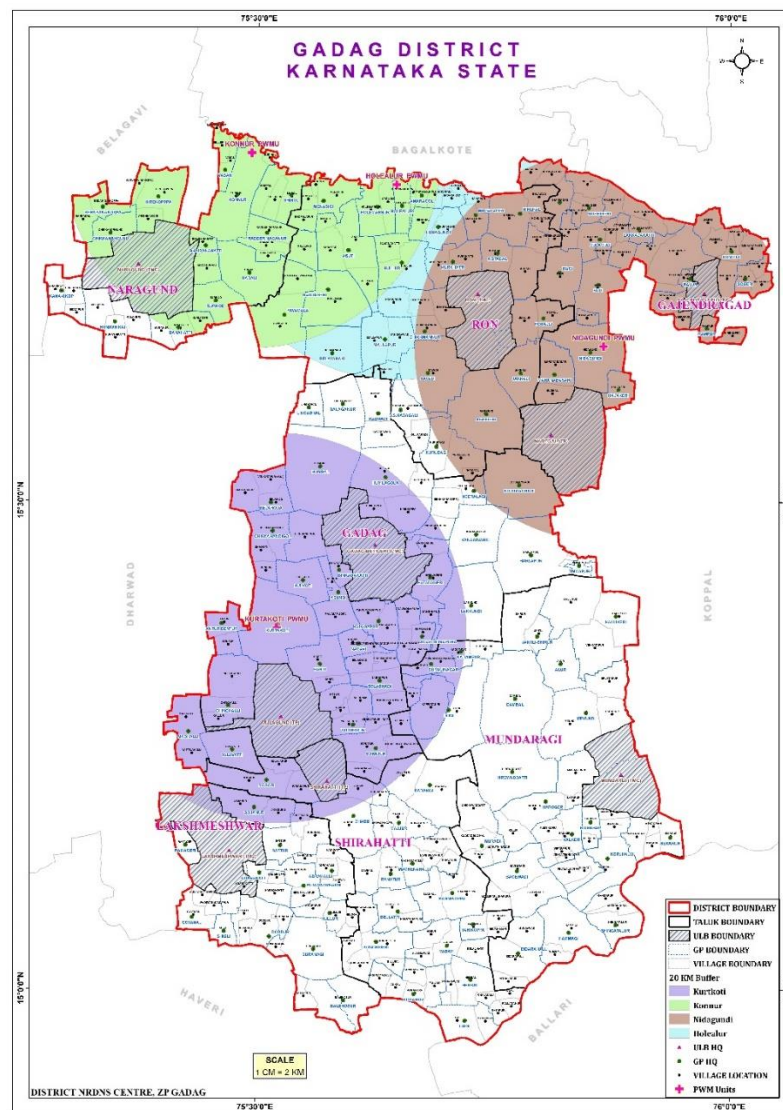
Map: 13



Activity: 6

Title of work	20 KM Buffer Map of PWM Units
Department Name	Zilla Panchayat Office Gadag. (SBM)
Objectives	As Zilla Panchayat is Proposing 4 PWM Units in district. As they wanted to know villages cover under 20 KM from the proposed Unit location. Buffer map of 20 Km done with showing villages coming under its jurisdiction.
Data Used	District Boundary, Taluk Boundary, Village Boundary, Village Location and 20 KM Buffer Layer.
Data Process	A buffer of 20 KM was created to PWM Unit location using buffer option, later using clip option villages which falls under 20 KM buffer jurisdiction was clipped and map layout was prepared and provided.
Type of Data Provided	JPEG Maps (Map-14)

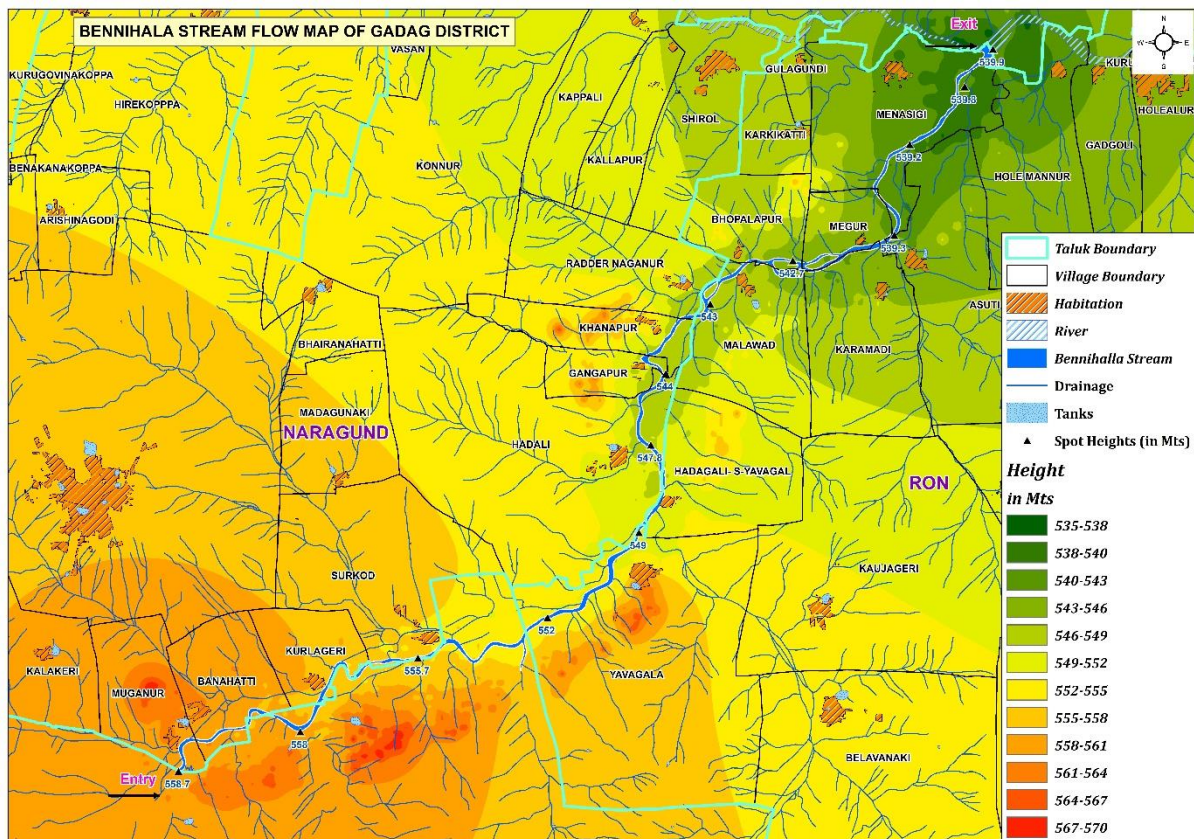
Map: 14



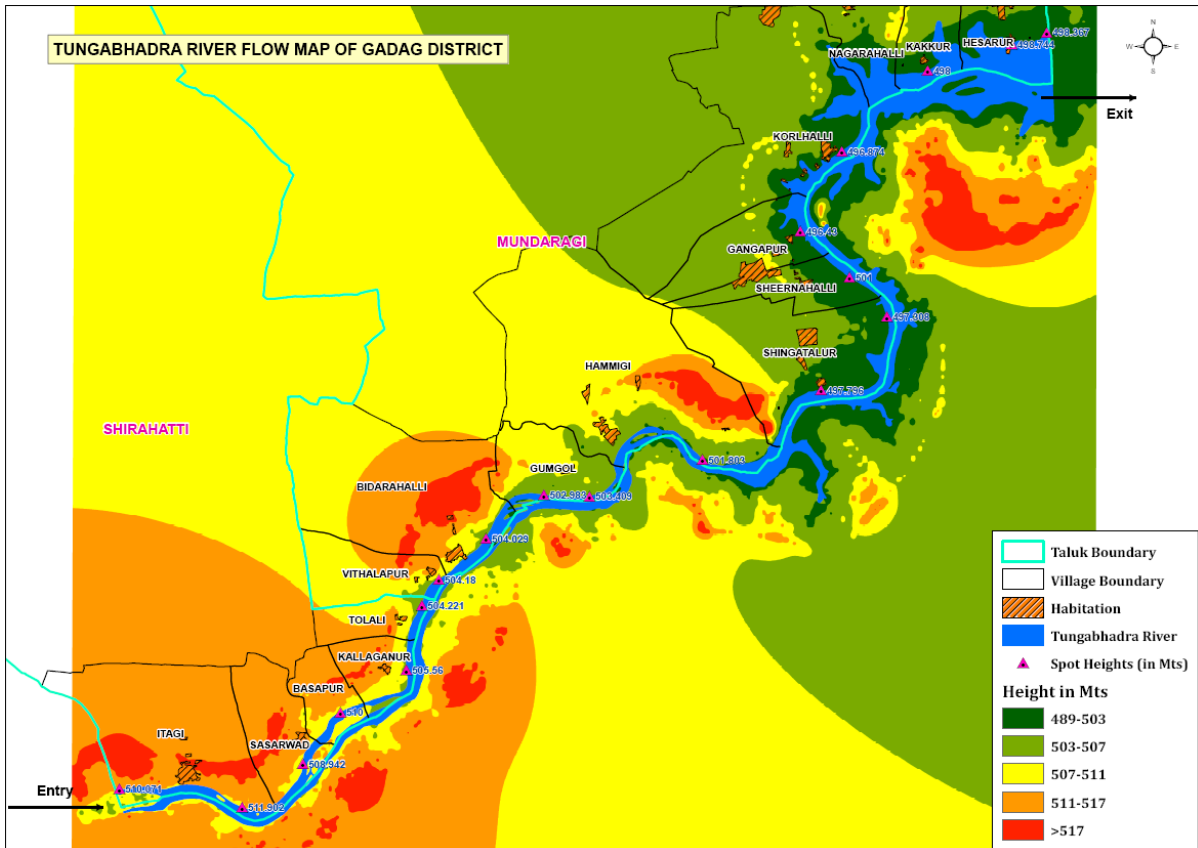
Activity: 7

Title of work	Flood Prone Zone Mapping of Bennihall Stream, Tungabhadra and Malaprabha River in Gadag District.
Department Name	Deputy Commissioner Office, Gadag
Objectives	As District administration is preparing a plan to control flood in Bennihall Stream, Tungabhadra River and Malaprabha River in the district, hence various maps were prepared and provided as per instruction of DC,Gadag.
Data Used	Taluk Boundary, District Boundary, Village Boundary, Cadastral Boundary Habitation, River and Elevation Map
Data Process	Using above mention layers flood prone zone mapping was done for the district for mitigation and early planning of flood precaution measures for district administration.
Type of Data Provided	JPEG Maps (Map-15, 16 & 17)

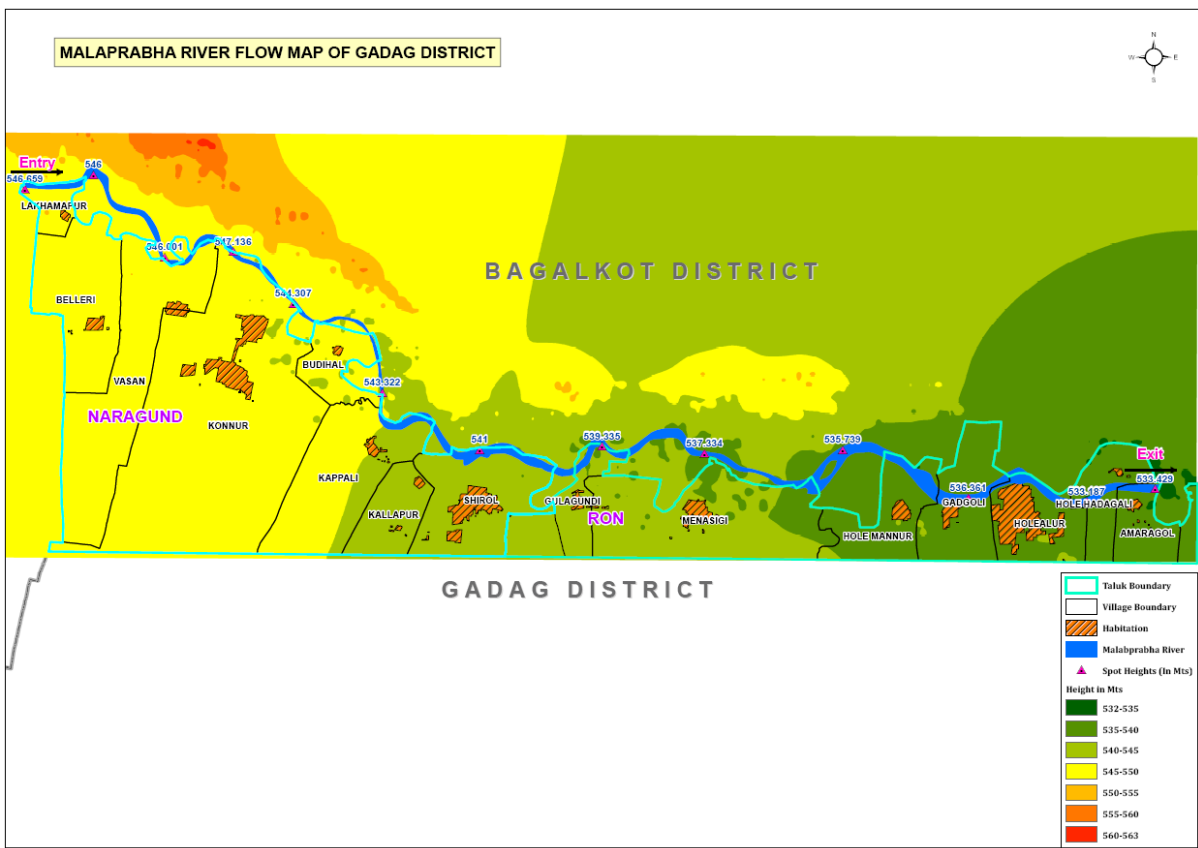
Map: 15



Map: 16



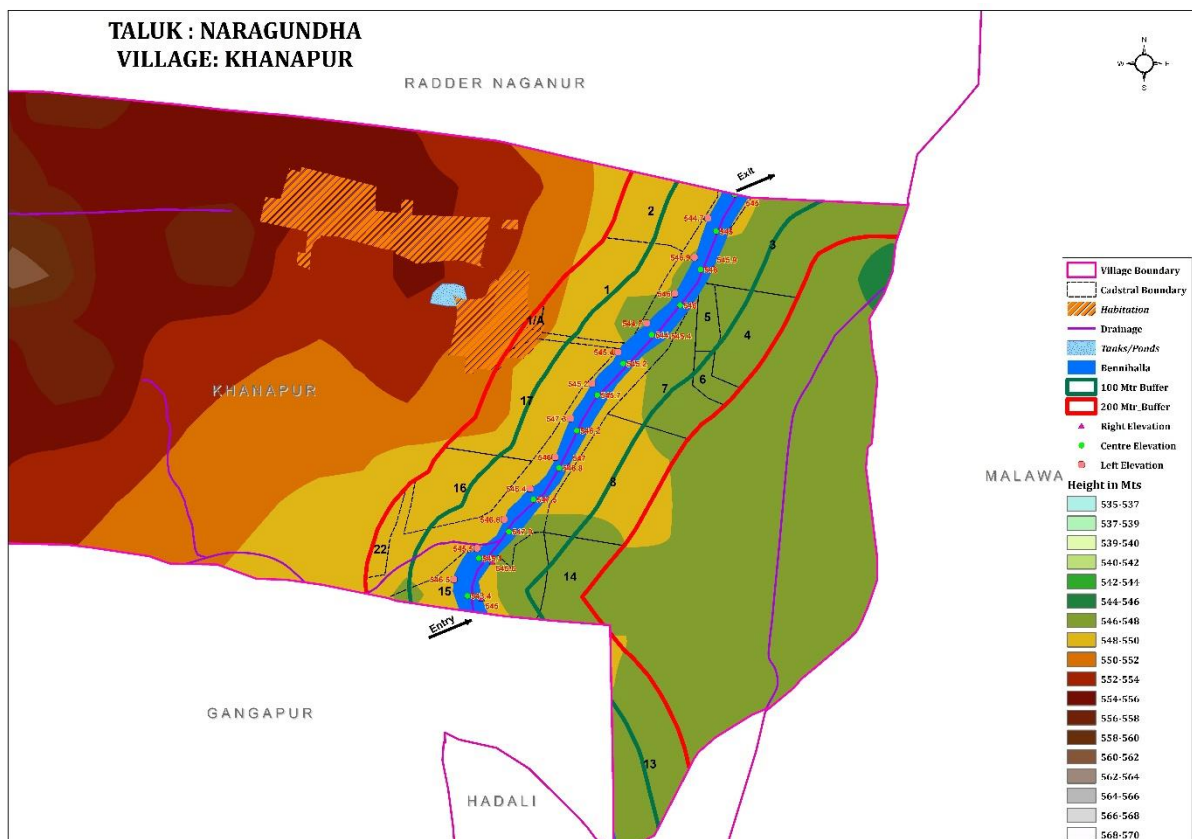
Map: 17

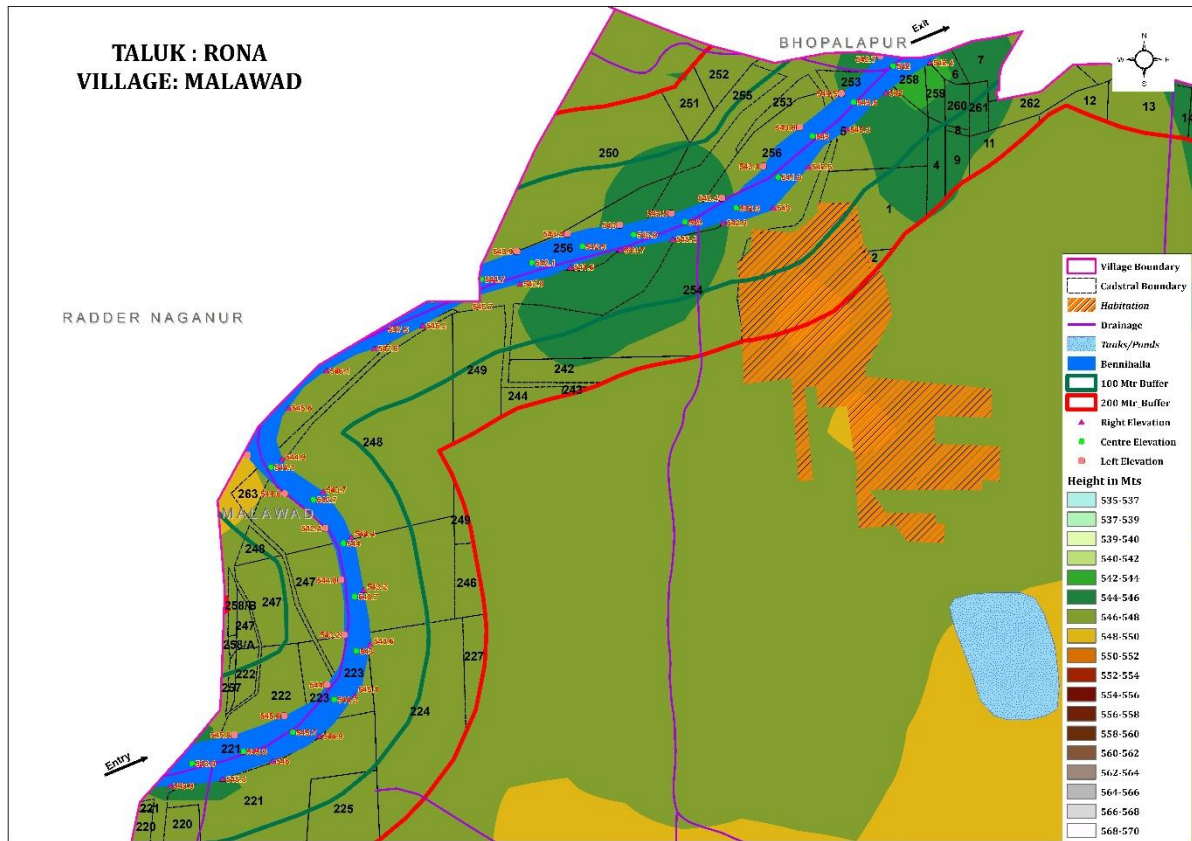


Activity: 8

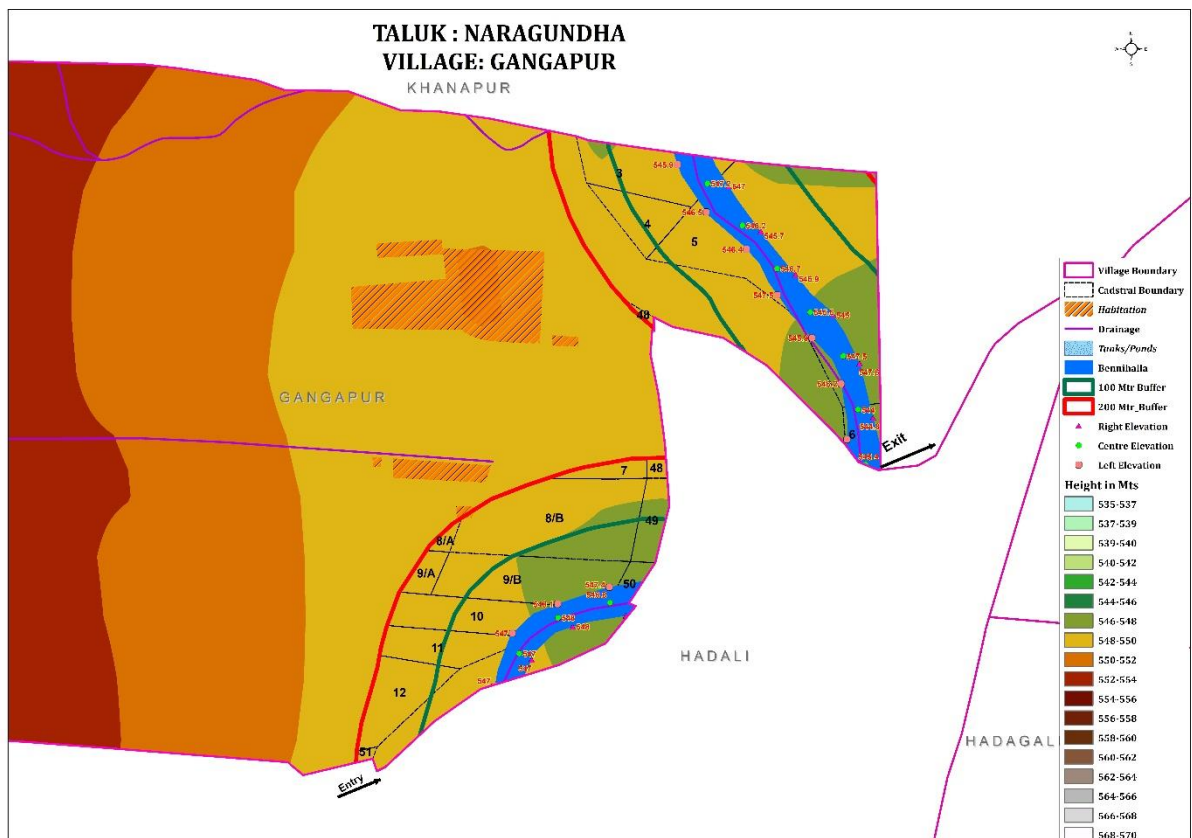
Title of work	Village wise Flood Prone Zone Mapping of Bennihall Stream in Gadag District.
Department Name	Deputy Commissioner Office, Gadag
Objectives	As District administration is preparing a plan to control flood in Bennihall Stream in the district, hence various flood prone map of each village was prepared by adding buffer of 100 and 200 mts to stream and mitigating the area of extent that will be affected. Village wise maps and area of extend to be affected was prepared (Excel Sheet) was prepared and provided to district administration as per instruction of DC,Gadag.
Data Used	Taluk Boundary, District Boundary, Village Boundary, Cadastral Boundary Habitation, River, Buffer Zone and Elevation Map
Data Process	Using above mention layers flood prone zone mapping was done for the district for mitigation and early planning of flood precaution measures for district administration.
Type of Data Provided	JPEG Maps (Map-18, 19 & 20)

Map: 18



Map: 19

Map: 20



Activity: 9

Title of work	Complying of School Location data of the District for KAMS
Department Name	Zilla Panchayat Office Gadag/ Education Department.
Objectives	Zilla Panchayat in association with Education department incorporating KAMS (Karnataka Attendance Management System) developed by CEG. KAMS is Location and Aadhar based School attendance monitoring system. In this regard collected and location of schools in district (731) and linked the data with all Employees of the School (4000) and Provided data to CEG as per instruction of CEO, ZP Gadag.
Data Used	School Location, HRMS data base of Education department.
Data Process	For above mentioned process School location data plays a vital role. Hence available school location data (Latitude and Longitude) was cross verified along with the concerned department and rectified. Final data was linked to Employees data and provided to CEG department.
Type of Data Provided	Tabular data. (Table: 5)

Table 5: Employee data along with facility (School/Office) location data.

SL.No	Employee KGID No.	Name of The Employee as per Aadhar	Mobile number	Designation of the Employee	Office Name	Office Complete Address	Name of the District	Name of the Taluka	Latitude of the Office (Upto 6 Decimals)	Longitude of the Office (Upto 6 Decimals)
1	1829597	SRI M K HIREMATH	6363796435	SECONDARY SCHOOL ASSISTANT MASTER/MISTRESS GRADE II	GOVT HS BENAHAL	RON	GADAG	RON	15.786100	75.679900
2	2006462	RANGAPPA GANIGER	7026794749	PRIMARY SCHOOL ASSISTANT MASTER/MISTRESS	GHPs NAINAPUR	RON	GADAG	RON	15.811544	75.722066
3	1494845	SHAREEFSAB R NADAF	7204642986	PRIMARY SCHOOL ASSISTANT MASTER/MISTRESS	GHPUBS MUNDARAGI	MUNDARAGI	GADAG	MUNDARAGI	15.203400	75.882800
4	1201904	P N KONGAWAD	7259459926	PRIMARY SCHOOL ASSISTANT MASTER/MISTRESS	GHPUS RON	RON	GADAG	RON	15.698600	75.728900
5	2007389	MAILARAPPA NIMBANAİKAR	7259997601	PRIMARY SCHOOL ASSISTANT MASTER/MISTRESS	GLPS NARAYANAPUR(DAMBAL)	MUNDARAGI	GADAG	MUNDARAGI	15.254100	75.763600
6	1209821	FATIMAMARY AROCKIAM ARASUR	7338314377	SECONDARY SCHOOL ASSISTANT MASTER/MISTRESS GRADE II	SKNK GOVT HS HARLAPUR	GADAG RURAL	GADAG	GADAG RURAL	15.422200	75.777500
7	1155787	F J NIRALAGI	7338686229	PRIMARY SCHOOL ASSISTANT MASTER/MISTRESS	GLPUS INDIRANAGAR(LAXMESHWAR)	SHIRHATTI	GADAG	SHIRHATTI	15.121205	75.475460
8	2344479	CHANDRASHEKAR YAMANAPPA GUDASALAMANI	7353485776	ASSISTANT MASTER (PHYSICAL EDUCATION) GRADE II	GHPs NO 4 NARAGUND	NARGUND	GADAG	NARGUND	15.729600	75.386700
9	1496916	S B HOTTI	7353501642	PRIMARY SCHOOL ASSISTANT MASTER/MISTRESS	GLPS SHYABALA	SHIRHATTI	GADAG	SHIRHATTI	15.067359	75.489570
10	2002772	SADIYA BARJEES	7411774566	SECONDARY SCHOOL ASSISTANT MASTER/MISTRESS GRADE II	GOVT U HS GADAG	GADAG CITY	GADAG	GADAG CITY	15.428700	75.631900

Activity: 10

Title of work	GIS Based Dashboard for NRLM Employee Attendance Monitoring
Department Name	Zilla Panchayat Office Gadag
Objectives	CEO, ZP Gadag instructed to create a dashboard using Power BI Software to monitor NRLM Employees field visit.
Data Used	Power BI Software & Gram Panchayat Boundary (.shp)
Data Process	Integrated Google sheet data to shape file in Power BI software and created GIS dashboard.
Type of Data Provided	Web Link

<https://app.powerbi.com/view?r=eyJrIjojYWE2MDAzNDQtNjQ5Zi00YmE2LWlzM2YtOGU3MDZmOGM1ZWVliwidCI6IjZhODg5NjEzLTl2MWItNDVjZC1hNWRmLTc2NzU2ODZjZjY1YyI9>

NRLM -FIELD RESOURCE MONITORING SYSTEM					GIS REPORT
Taluk	Cadre	Employee			
All	All	All			
Total Employees	Atte Marked Today	Atte Not Marked Today	Atte Marked Yesterday	Atte Marked in Week	
33	13	20	30	31	
Total Visits		In This Week Visits		In This Month Visits	
Visited Unit	No of Visits	Visited Unit	No of Visits	Visited Unit	No of Visits
GPLF	1	GPLF	73	GPLF	73
MKPC	632	OSF Center	1	OSF Center	1
OSF Center	1	Other	14	Other	14
Other	10	Other Line department	12	Other Line department	12
Other Line department	209	SHG	6	SHG	6
Other Line department	61	TP	61	TP	61
SHG	47	WLF	1	WLF	1
TP	794	ZP	9	ZP	9
WLF	12	Total	177	Total	177
Total	2009				
Attendance Marked Today					
Taluk	Cadre	Employee Name	Visited Place	Unit Visited	
Mundaragi	CS Skill	ನೀಲಮ್ಮ ಪೂರ್ಣಿಮಾ	ತಾ.ಪಂ ಮುಂಡರಗಿ	TP	
Rona	CS	ಸುನಿತಾ ಕೀರ್ತನ	ಶಿರಹಟ್ಟಿ	GPLF	
Rona	CS	ವಿಜಯ ಕುಮಾರ	ತಾ.ಪಂ ರೋನಾ	GPLF	
Rona	DEO	ಚನ್ನಪ್ಪ	ತಾ.ಪಂ ರೋನಾ	TP	
Shirhatti	CS	ವಿಜಯ ಕುಮಾರ	ನಾರಾಯಣ	GPLF	
Mundaragi	CS	ವಿಜಯ ಕುಮಾರ	ನಾರಾಯಣ	GPLF	
Shirhatti	TPM	ವಿಜಯ ಕುಮಾರ	ತಾ.ಪಂ ಮುಂಡರಗಿ	TP	
Gadag	CS	ನಿರಂಜನ	ನಾರಾಯಣ	GPLF	
Rona	TPM	ನಿರಂಜನ	ತಾ.ಪಂ ರೋನಾ	Other	
Shirhatti	BM Non-farm Livelihood	ನಿರಂಜನ	ನಾರಾಯಣ	GPLF	
Nargund	CS Skill	ನಿರಂಜನ	ನಾರಾಯಣ	Other Line departmen	
Nargund	CS	ನಿರಂಜನ	ನಾರಾಯಣ	Other Line departmen	

Taluk	Cadre	Employee
All	All	All
Taluk Wise Maps:		
Gadag	Gajendragad	Laxmeshwar
Mundaragi	Nargund	Rona
Shirhatti		
GP Visited Today		
GP Visited in Last 7 Days		
GP Visited in Last 15 Days		
GP Visited in Last 30 Days		

6. Training Programmes Attended:

1. Attended 1 day workshop conducted by EMPRI on 08/05/2025 at Gadag regarding Climate Change.
2. Attended 1 day training program conducted by MGNREGA & KSRSAC on 09/05/2025 at KSRSAC, Bengaluru regarding KGIS Portal for Road Side Plantation.

7. Training Imparted to Line Department:

1. Provided training to Education department staff for School location correction for implementation of KAMS in Gadag district on 14/05/2025.
2. Provided training to Forest department staff regarding KGIS Portal for Road Side Plantation in Gadag district on 30/05/2025 & 31/05/2025.

8. Science Outreach Activities:

No Science Outreach Activities were conducted during this period.

9. Conclusion:

A) Summary of Activities Under Take.

During this period district NRDMS center, ZP Gadag provided various Maps, data and report to Zilla Panchayat Office, Deputy Commissioner Office and various line department, pertaining to implementation of various activities and assist district administration in disaster management.

B) Commitment to Improve NRDMS Activities.

District NRDMS Centre ZP Gadag is committed to provide quality and scientific assistance to department for implementation of developmental activities in district.

District NRDMS center is also committed to update the existing data base as up to date to enhance its performance and to assist the departments.

Centre is also committed to learn and update ourself to latest GEO SPATIAL technology and other software to improve our efficiency.

10. Annexures:

List of Tables:

Table 1: Showing administrative details of Gadag district.

Table 2: Villages List affected by Mines (5 KM from Mine Site)

Table 3: Village wise and Survey Number wise extent of land to be affected.

Table 4: Crop Survey data provided by department.

Table 5: Employee data along with facility (School/Office) location data.

List of Maps:

Map 1: Location map of Gadag District.

Map 2: Location Map of Villages Affected by Mines (5 KM Buffer) in Gadag District.

Map 3: Map Showing the Forest Area in Gadag Division.

Map 4: Map Showing the Eucalyptus Plantation in Non wildlife Area in Gadag Division.

Map 5: Human Development Index Map of Gadag District.

Map 6: Education Index Map of Gadag District.

Map 7: Health Index Map of Gadag District.

Map 8: Living Standard Index Map of Gadag District.

Map 9: Contour Map of Hammagi Barrage, in Mundaragi Taluk, Gadag District.

Map 10: Contour and Water Sperad Map of Hammagi Barrage, in Mundaragi Taluk, Gadag District.

Map 11: Contour, Water Sperad and Extent of Land affected Map of Hammagi Barrage, in Mundaragi Taluk, Gadag District.

Map 12: Crop Survey Map of Shirunja Village, Taluk & District Gadag.

Map 13: Crop Survey Map of Mundwad Village, Taluk Mundaragi, District Gadag.

Map 14: 20 KM Buffer of PWm Units in Gadag District.

Map 15: Flood Prone Zone Map of Bennihala Stream of Gadag District.

Map 16: Flood Prone Zone Map of Tungabhadra River of Gadag District.

Map 17: Flood Prone Zone Map of Malaprabha river of Gadag District.

Map 18: Flood Prone Zone Map of Khanapur Village, Taluk Nargund, District Gadag.

Map 19: Flood Prone Zone Map Malwad Village, Taluk Rona, District Gadag.

Map 20: Flood Prone Zone Map Gangapur Village, Taluk Nargund, District Gadag.
