

NATURAL RESOURCES DATA MANAGEMENT SYSTEM (NRDMS)

**MONTHLY ACTIVITY REPORT
August – November 2025**

Submitted by
District NRDMS Centre
Zilla Panchayat,
Bengaluru Urban



Submitted to
Karnataka State Council for
Science and Technology (KSCST)
Indian Institute of Science Campus,
Bengaluru – 560012

Table of Contents		
SI No	Particulars	Page No.
1	NRDMS Centre & NRDMS Centre Activities (August– November 2025).	1-11
2	Training Programme Attended	12
3	Conclusion.	
4	Annexures	

1.NRDMS Centre Activities (August and November -2025):

- ✚ Grama Panchayats attaches to GBA boundary in Bengaluru Urban district map was prepared. In that 31 GP are identified & labelled in map
- ✚ Maps for the departments of Agriculture, Aayush, Animal and Husbandry, Backward Class Welfare, District Health and Family Welfare, Forestry, Fisheries, Horticulture, and Women and Child Development are created, which are essential for building repairs and constructions included in the draft plans for the Panchayat Raj program's activities in 2026–2027.

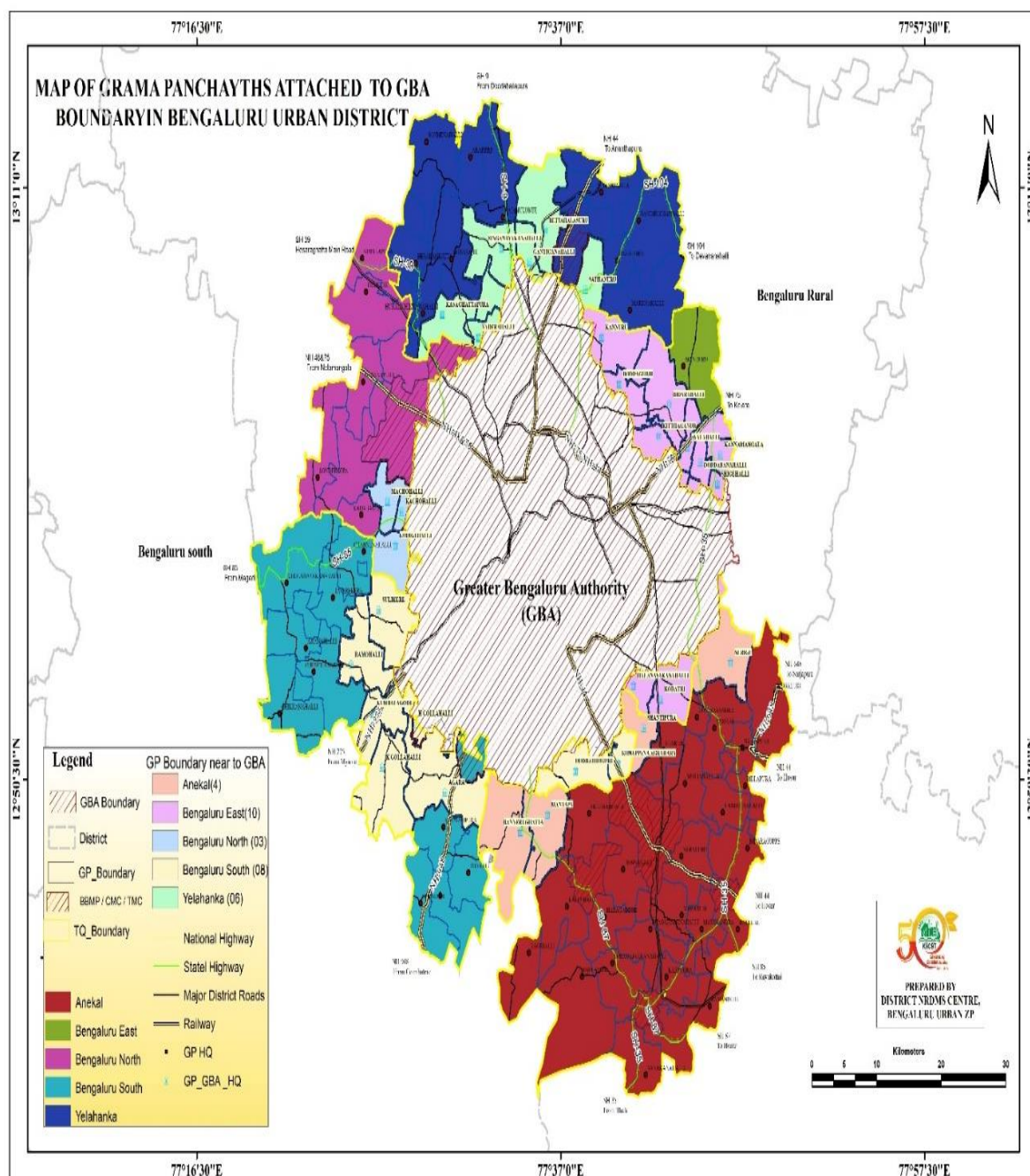


Fig 1: showing Map of Grama Panchayats Attached to GBA Boundary in Bengaluru Urban District

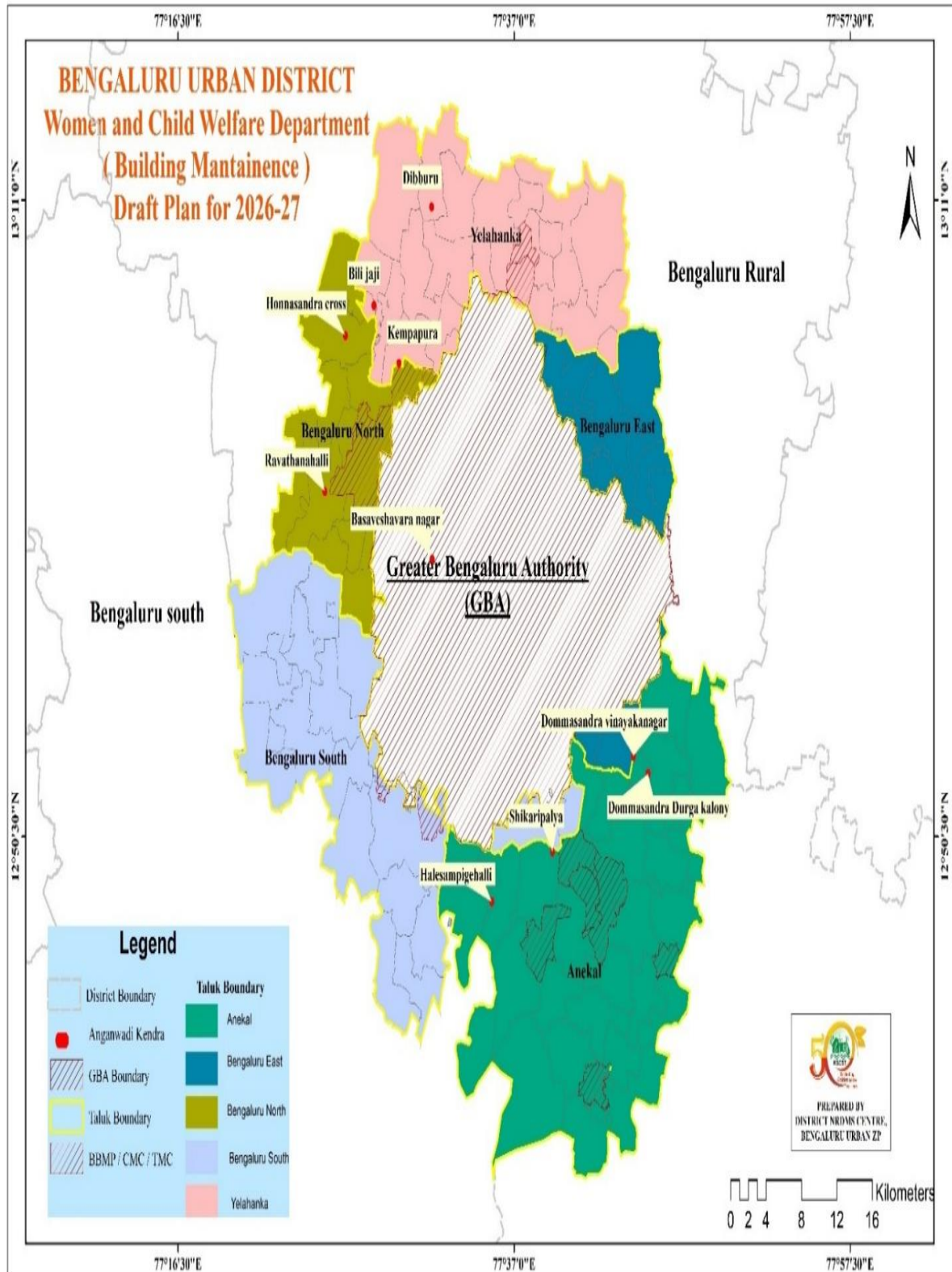


Fig 2: Showing Map of Women and Child Development Department Budling Maintenance

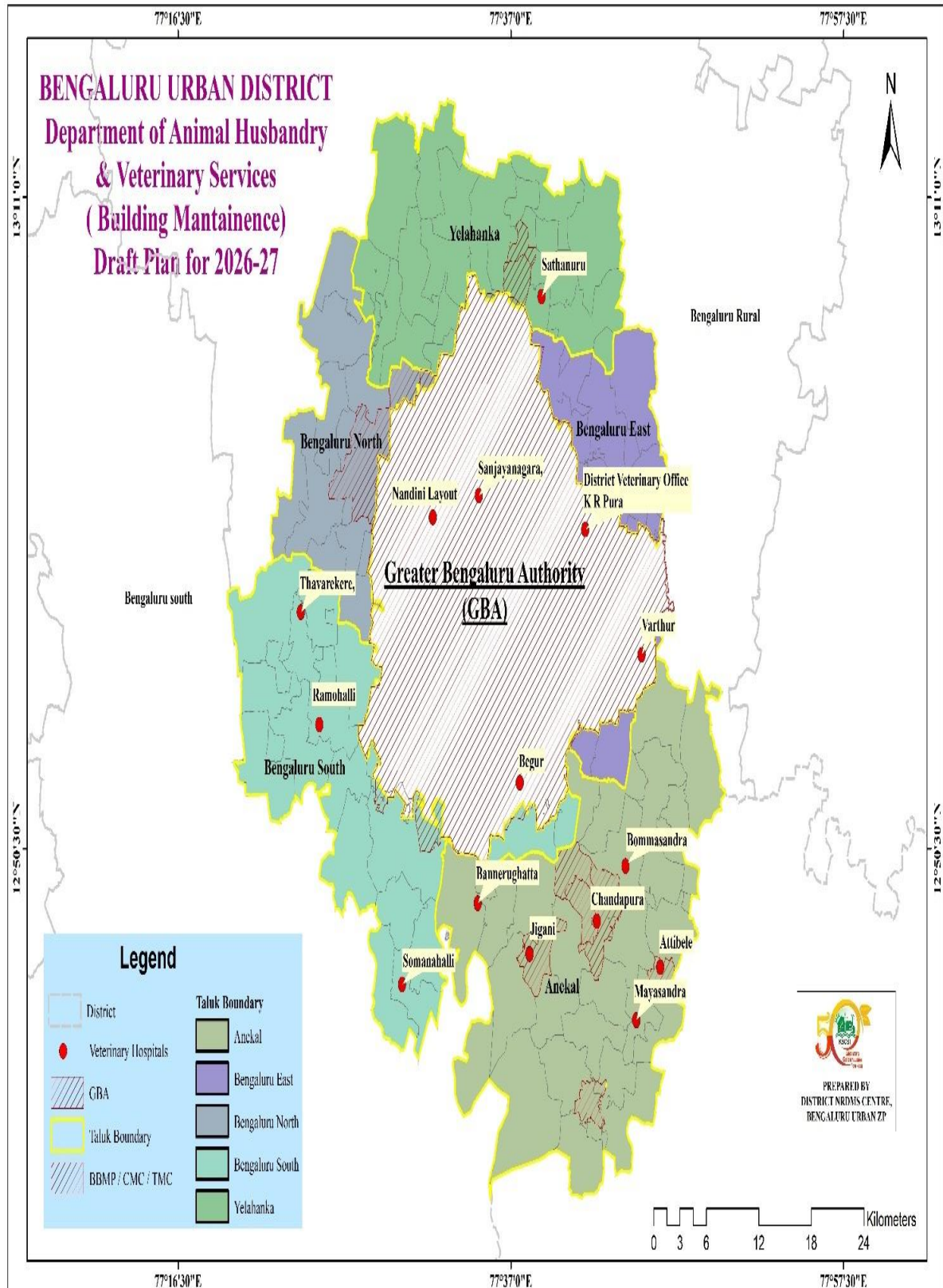


Fig 3: Showing Map of Animal and Husbandry Department Budling Maintenance

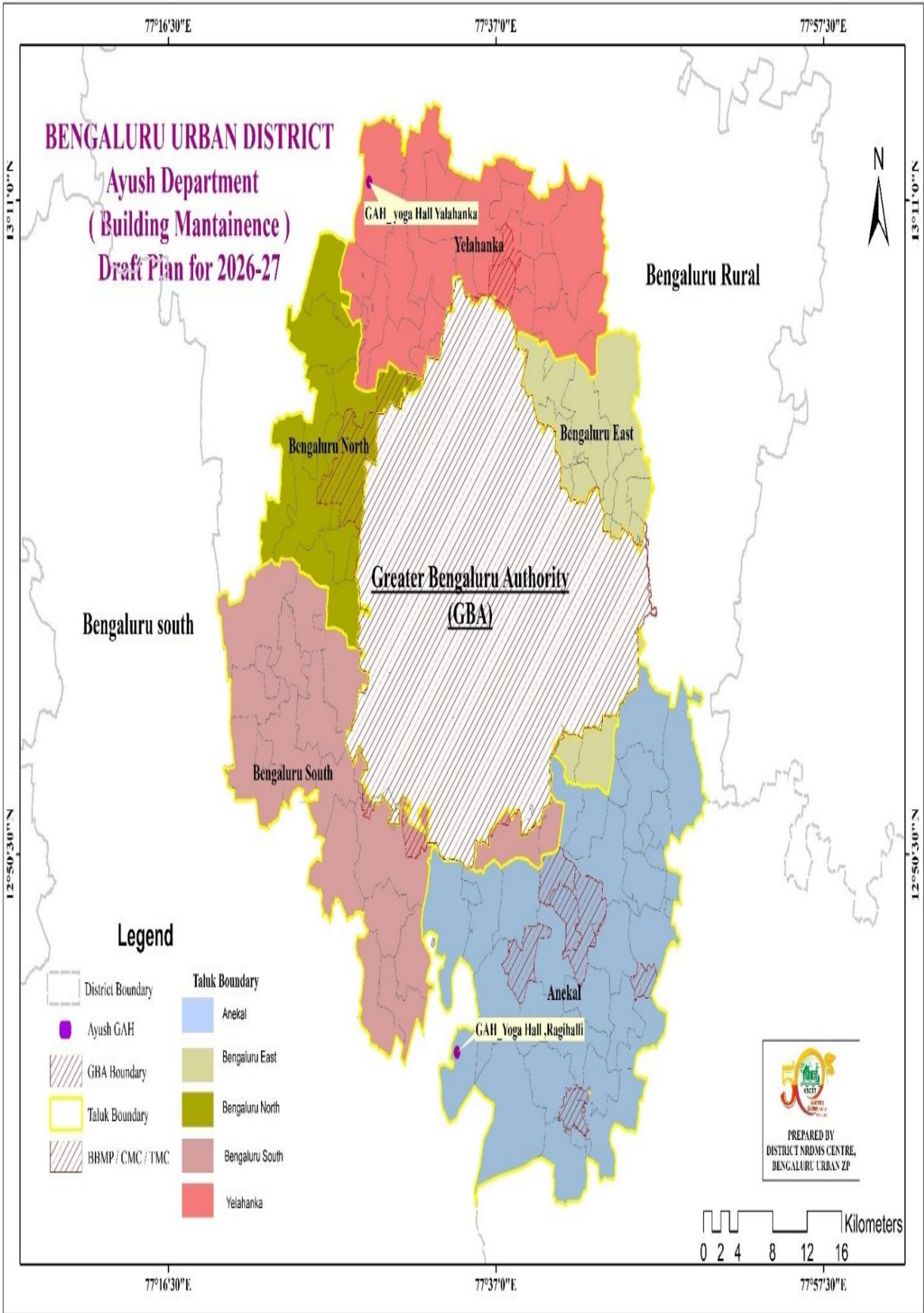


Fig 4: Showing Map of Ayush Department Budling Maintenance

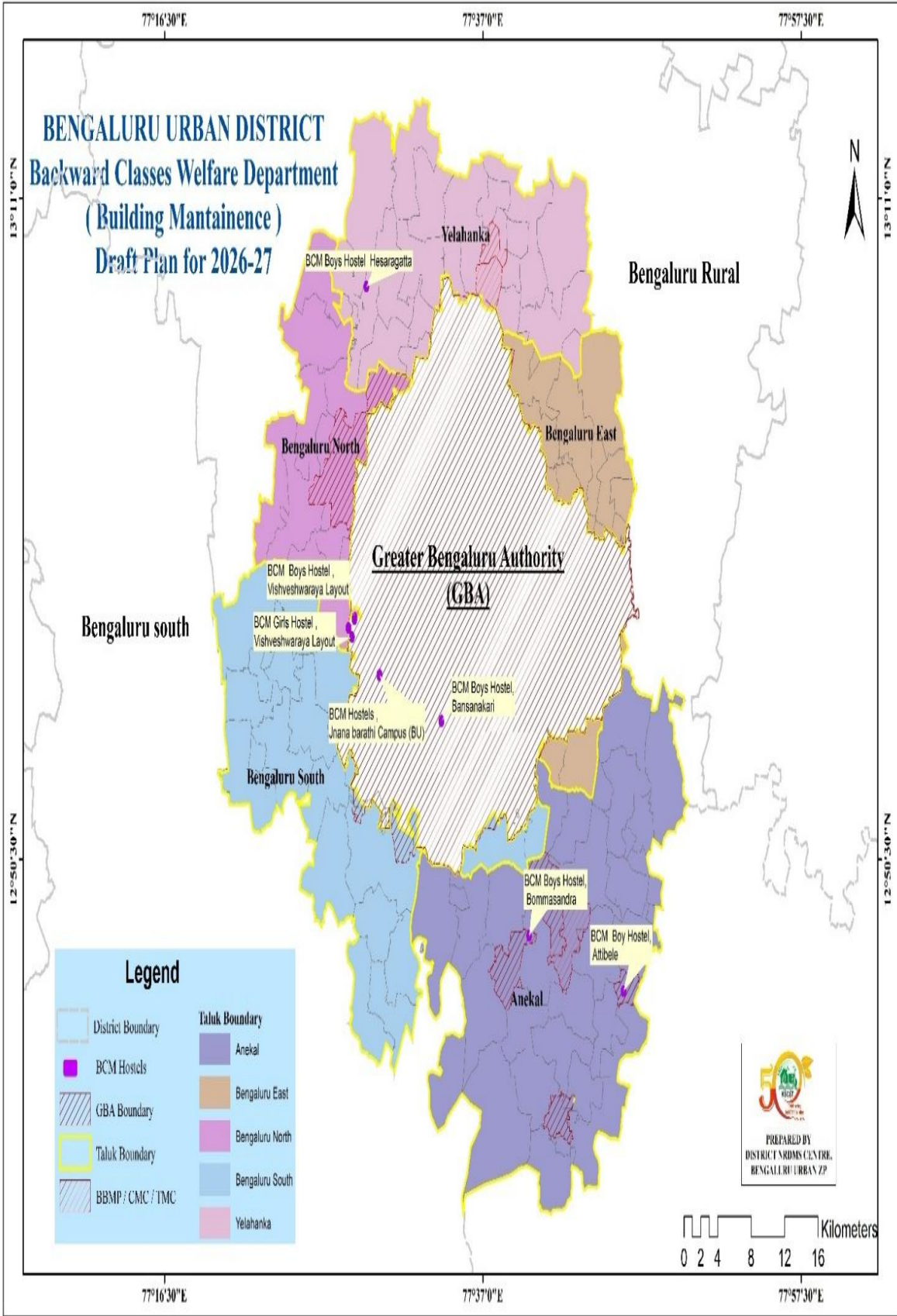


Fig 5: Showing Map of Backward Class Welfare Department Budling Maintenance

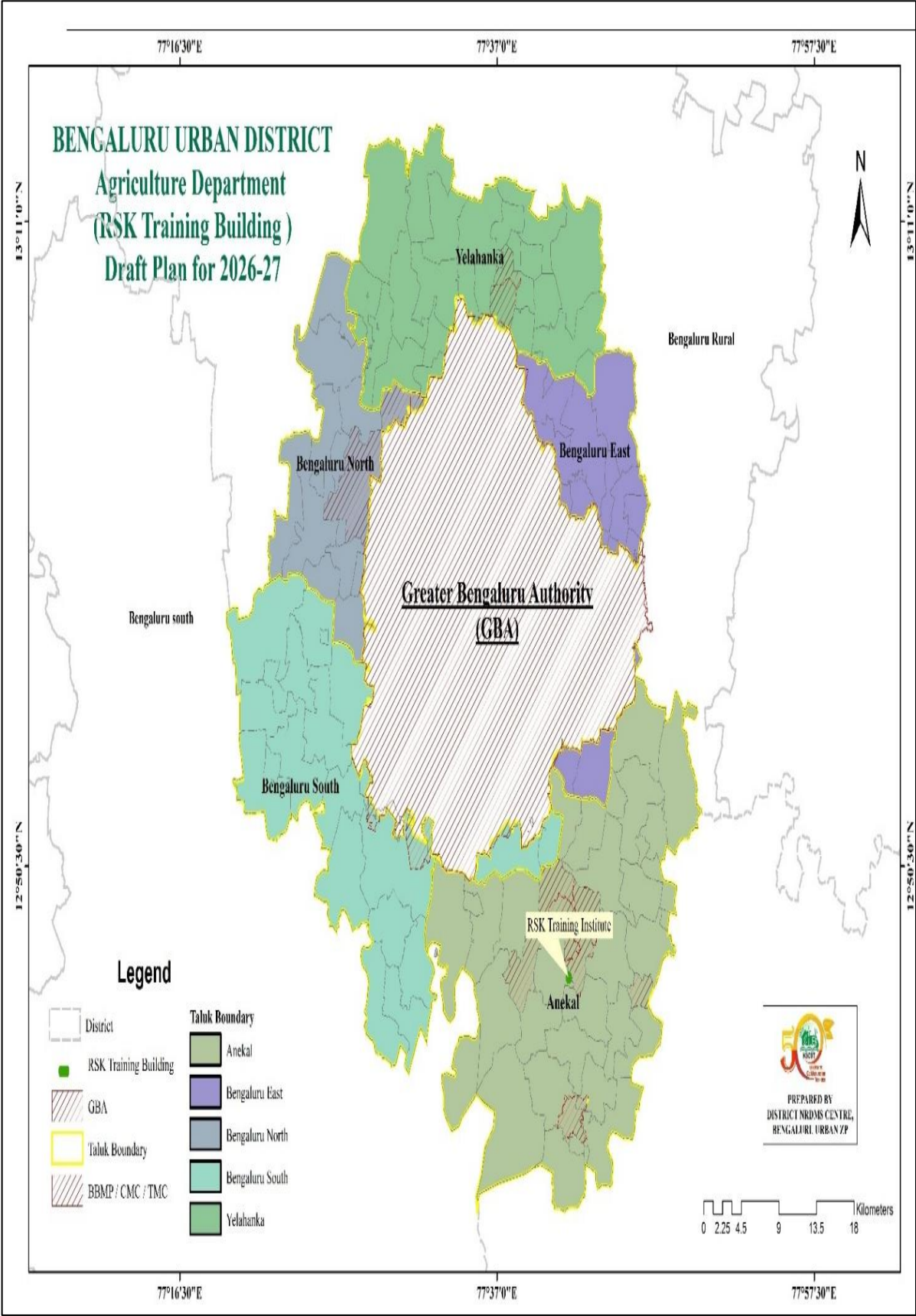


Fig 6: Showing Map of Agriculture Department Budling Maintenance

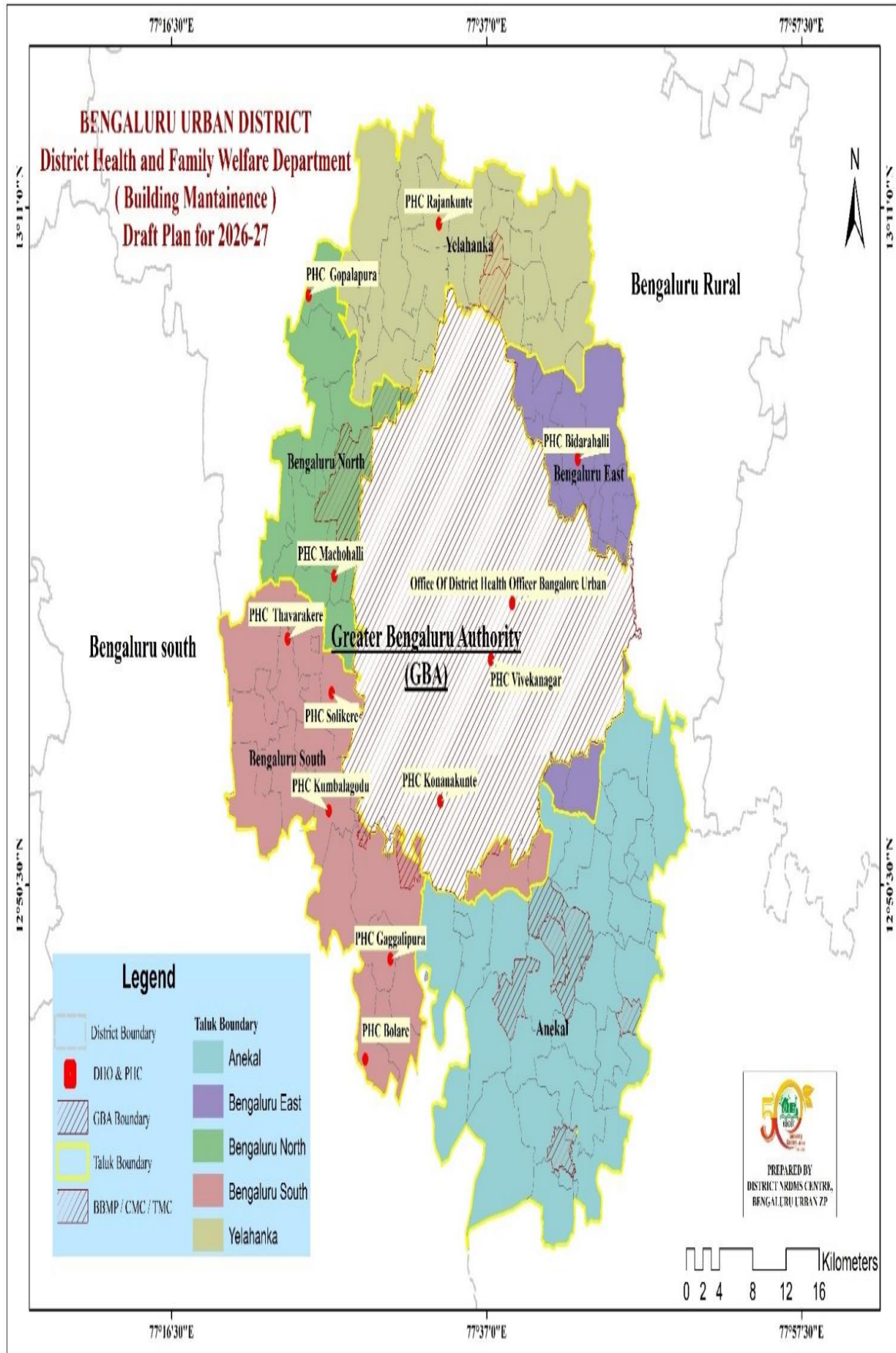


Fig 7: Showing Map of District Health and Family Welfare Department Budling Maintenance

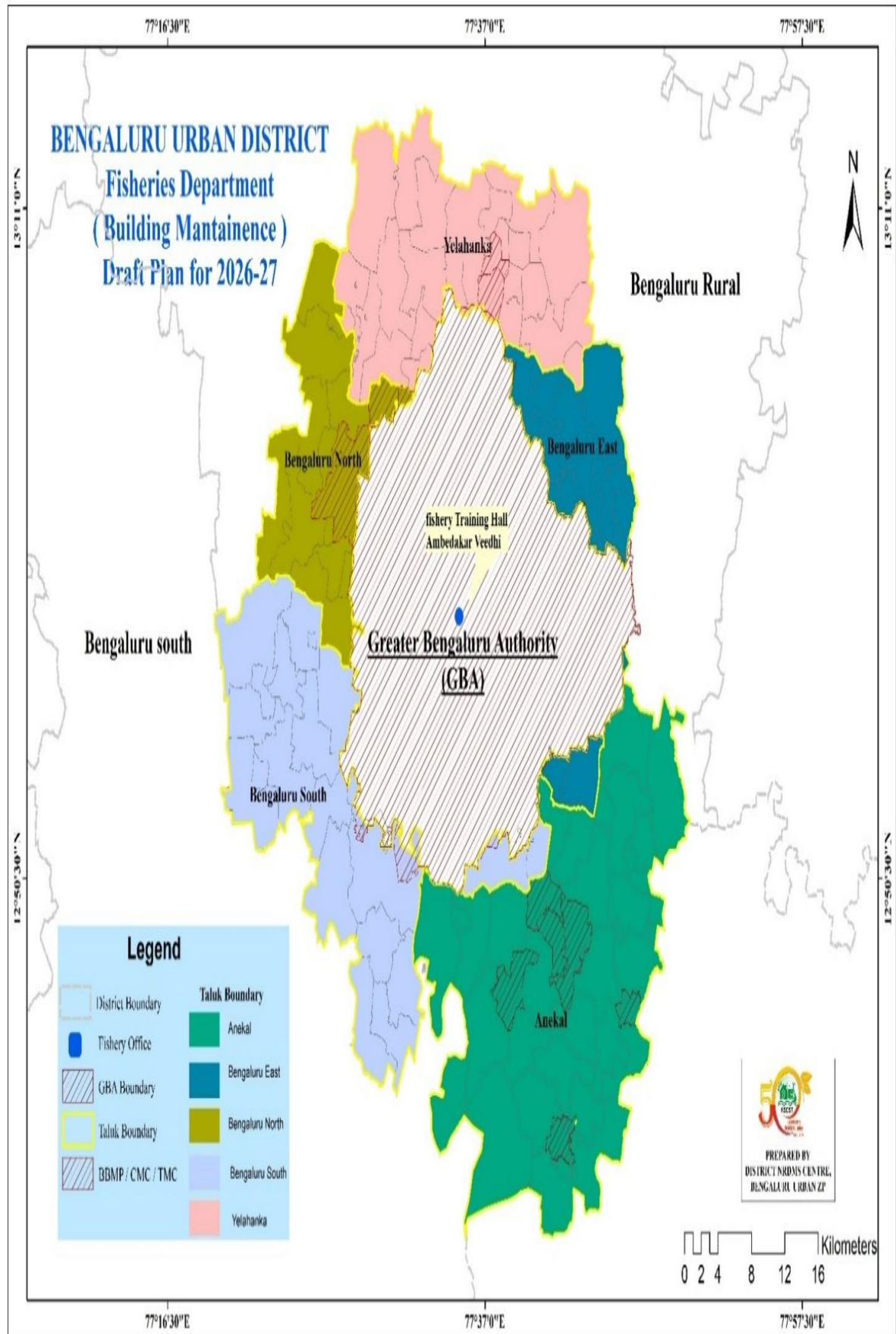


Fig 8: Showing Map of Fisheries Department Building Maintenance

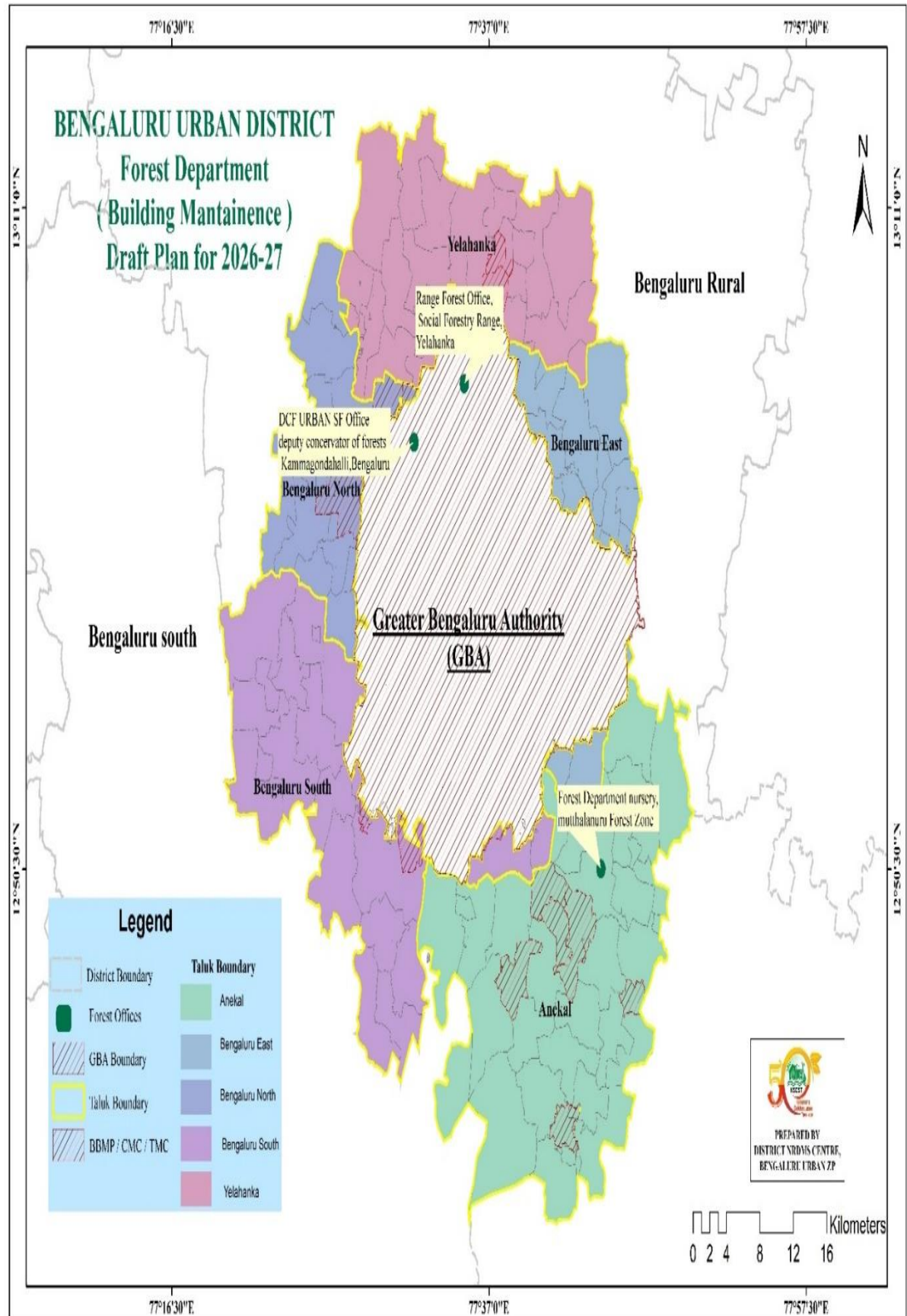


Fig 9: Showing Map of Forest Department Budling Maintenance

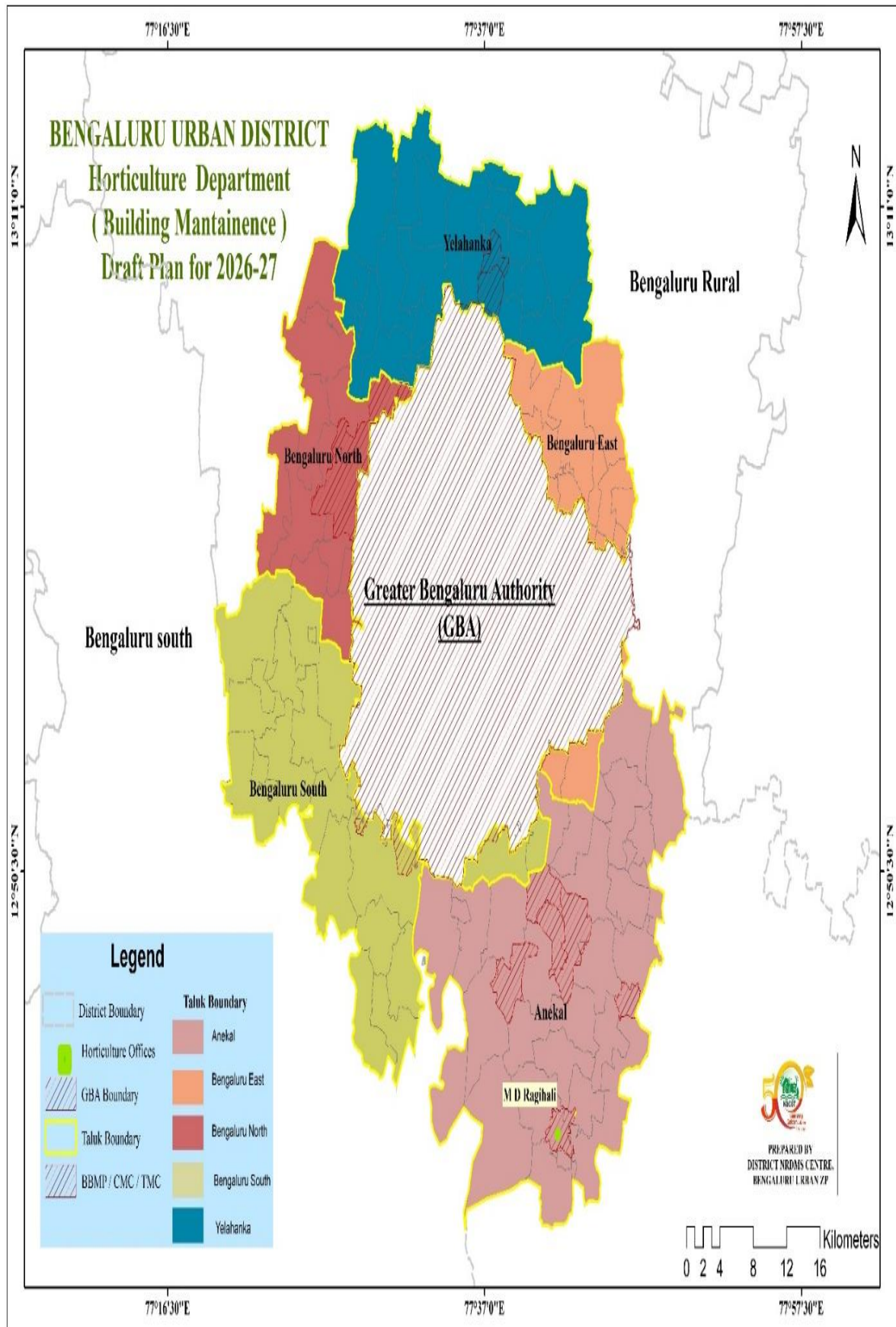


Fig 10: Showing Map of Horticulture Department Building Maintenance

2. Training Programmes Attended

- **Webinar Attended:** On Wednesday, 26th November **International webinar on Accelerating Geospatial Standards Implementation: International Perspectives and Partnerships** jointly organized by the **Survey of India and the CEPT Research & Development Foundation.**

3. Training Imparted to Line Departments: Nill

4. Science Outreach Activities: Nill

5. Conclusion

The District NRDMS Supporting all line departments, Zilla Panchayat, Planning Section with GIS tools for Planning District development activities using GIS tool. The centre also handling Following works:

- a) Draft plan 2026-27 proposal for various department building maintenance location Maps.
- b) KGIS Road side Plantation Portal
- c) Supporting to MGNREGA Section to Prepare GIS Based Grama Panchayat Action Plans.
- d) Technical Support to Planning Section Handling Avolokana, Monitoring IPAAP, PAI Portal, and SS-Yojana Draft Plan Portal.

6. Annexures

- List of Figures

Sl. No	Figures
1	Map of Grama Panchayats Attached to GBA Boundary in Bengaluru Urban District
2	Map of Women and Child Development Department Budling Maintenance
3	Map of Animal and Husbandry Department Budling Maintenance
4	Map of Ayush Department Budling Maintenance
5	Map of Backward Class Welfare Department Budling Maintenance
6	Map of Agriculture Department Budling Maintenance
7	Map of District Health and Family Welfare Department Budling Maintenance
8	Map of Fisheries Department Budling Maintenance
9	Map of Forest Department Budling Maintenance
10	Map of Horticulture Department Budling Maintenance
