

***NATURAL RESOURCES DATA
MANAGEMENT SYSTEM
(NRDMS)***

***MONTHLY ACTIVITY REPORT
August – November 2025***

***Submitted by
District NRDMS Centre
Zilla Panchayat, Mandya***



***Karnataka State Council of
Science and Technology
(KSCST)***

*Indian Institute of Science Campus,
Bengaluru - 560012*

CONTENTS

1. CHAPTER 5:

NRDMS Centre Activities (August -November 2025).

2. CHAPTER 6:

Training Programme Attended

3. CHAPTER 7:

Training Imparted to Line Departments

4. CHAPTER 8:

Conclusion

5. CHAPTER 9:

Annexures

Maps

CHAPTER 5

5.1) NRDMS Centre Activities (April -July 2025)

5.1.1) S B M Section:

Solid Waste Management Route Map

- As per the instructions of DS2 and request from SBM section collected the data pertaining to solid waste management route map along with their locations.
- Solid waste management route map of Pandavapura, Nagamangala, K R Pete and SR Patna taluk has been prepared and given to DS2 Madam and SBM section which comprises Solid waste unit and its routes from individual GP'S over taluk and village boundary.
- As per the request from the SBM section updated or revised map has been prepared and given.
 - Source- SBM Section.

5.1.2) Forest Department:

Frequently Updating road side plantation in the GIS portal for forest department at Aranya Bhavan, Mandya.

5.1.3) BCM Department:

- As per the discussion held with the CEO regarding the mapping of BCM hostels in the District.
- Discussed with BCM Officials regarding the mapping of the same.
- As per the instructions from the CEO visited and collected Postmetric and Premetric hostels GPS coordinates (Lat/Long values).
- Prepared BCM hostels map for the earlier collected details.

5.1.4) Delimitation:

Discussed with Thasildar, Maddur regarding the mapping of Town and its adjoining villages delimitation.

5.1.5) KSCST, Bengaluru:

Mandya District Boundary map with Taluk & Hobli has been provided to the KSCST officials which has been uploaded in the KSCST website.

5.1.6) Delimitation:

As per the instructions of the CEO and the request from EO prepared and gave Gram Panchath delemetation map of Maddur Taluk to EO, copy of the same has been sent to CPO and CEO.

5.1.7) Action Plan/ Draft Plan Maps:

A format has been sent through mail and whatsapp to various line department seeking the details of civil works for the preparation of Action Plan and Draft Plan Maps through telephone.

5.1.8) ZP/TP Maps, DC office:

As per the instructions of DC and request from the Thasildar, Maddur Taluk ZP/TP maps has been prepared in conection to the GP, town delemetation of Maddur

CHAPTER 6

6.1) Training Programme Attended

- Participated in the Yukthadhara training held through zoom meeting on 18. 08. 2025
- Participated in the online course as per RDPRs letter and instructions on yukthadhara on 10. 09. 2025 and the certificate for the same has been issued. Copy of the certificate has been given to CEO and CPO.
- Successfully participated in the Yukthadhara training at ATI, Mysuru on 12. 09. 2025

CHAPTER 7

7.1) Training Imparted to Line Departments

- Training was given the forest officials on K-GIS portal at Aranya Bhavan, Mandya.



CHAPTER 8

8.1) Conclusion

8.1.1) Summary of Activities and Key Findings:

BCM hostels mapping plays an important role in planning where it could help in identifying hostels, location and distance also help in proposing new hostels.

Whereas Solid Waste Management route map helps in finding easiest way to the Dumo Yard Centre.

Delemitation is the major changes made recently which will be helpful in demarcating the boundary of GP after the sprawl of Town.

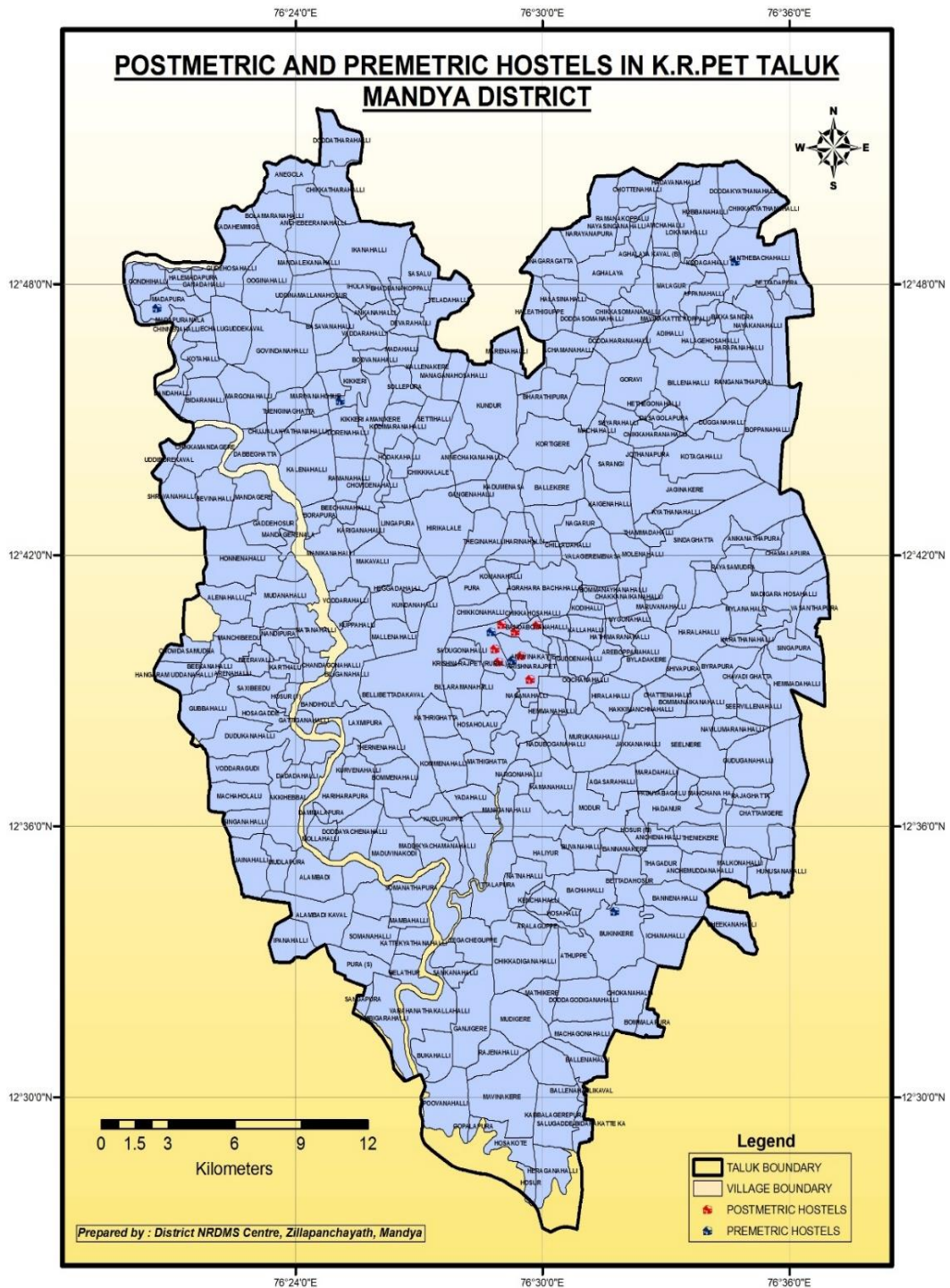
GIS technique is found efficient to minimize the time, labor and money and thereby enables quick decision-making.

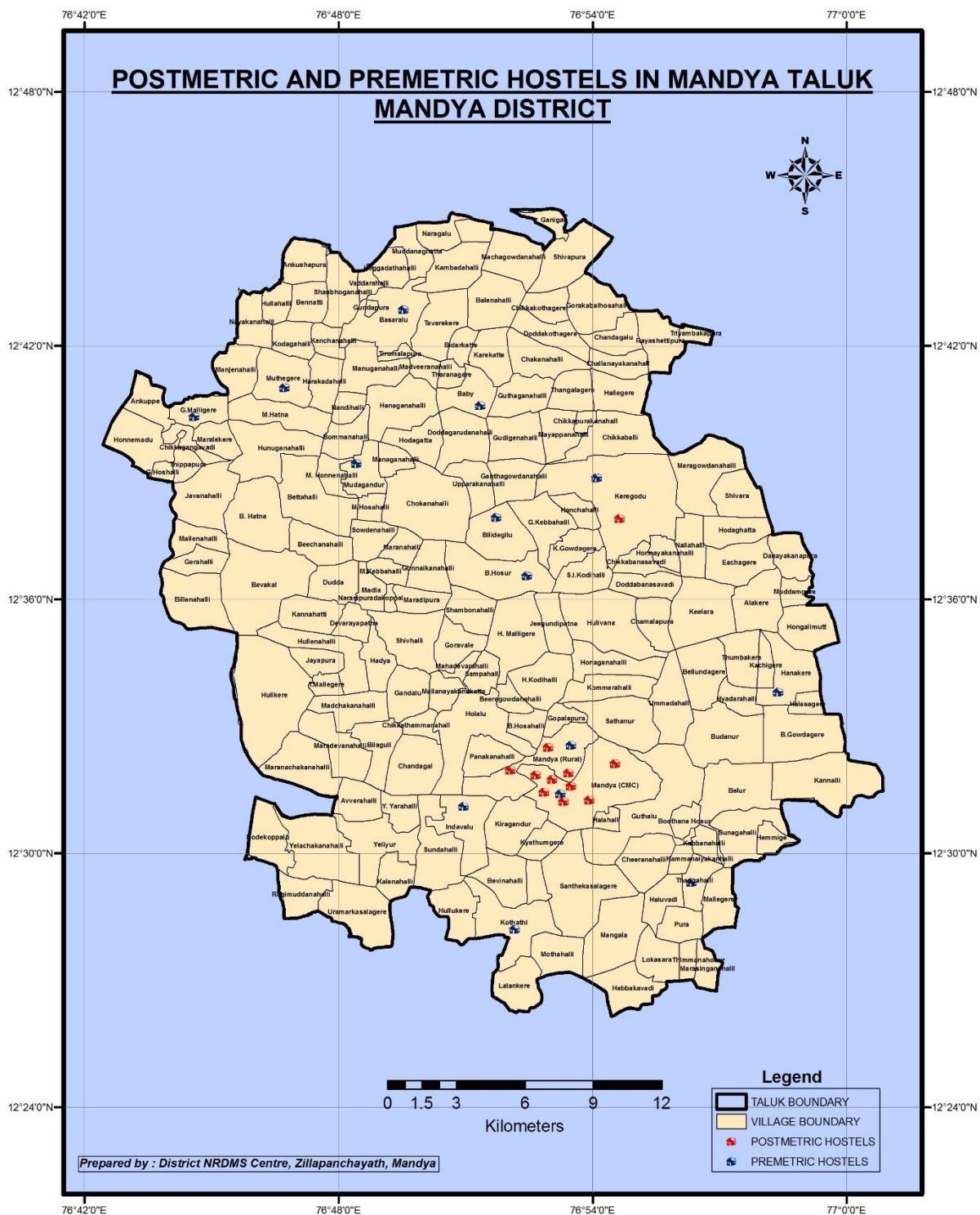
8.1.2) Commitment to improve NRDMS Activities:

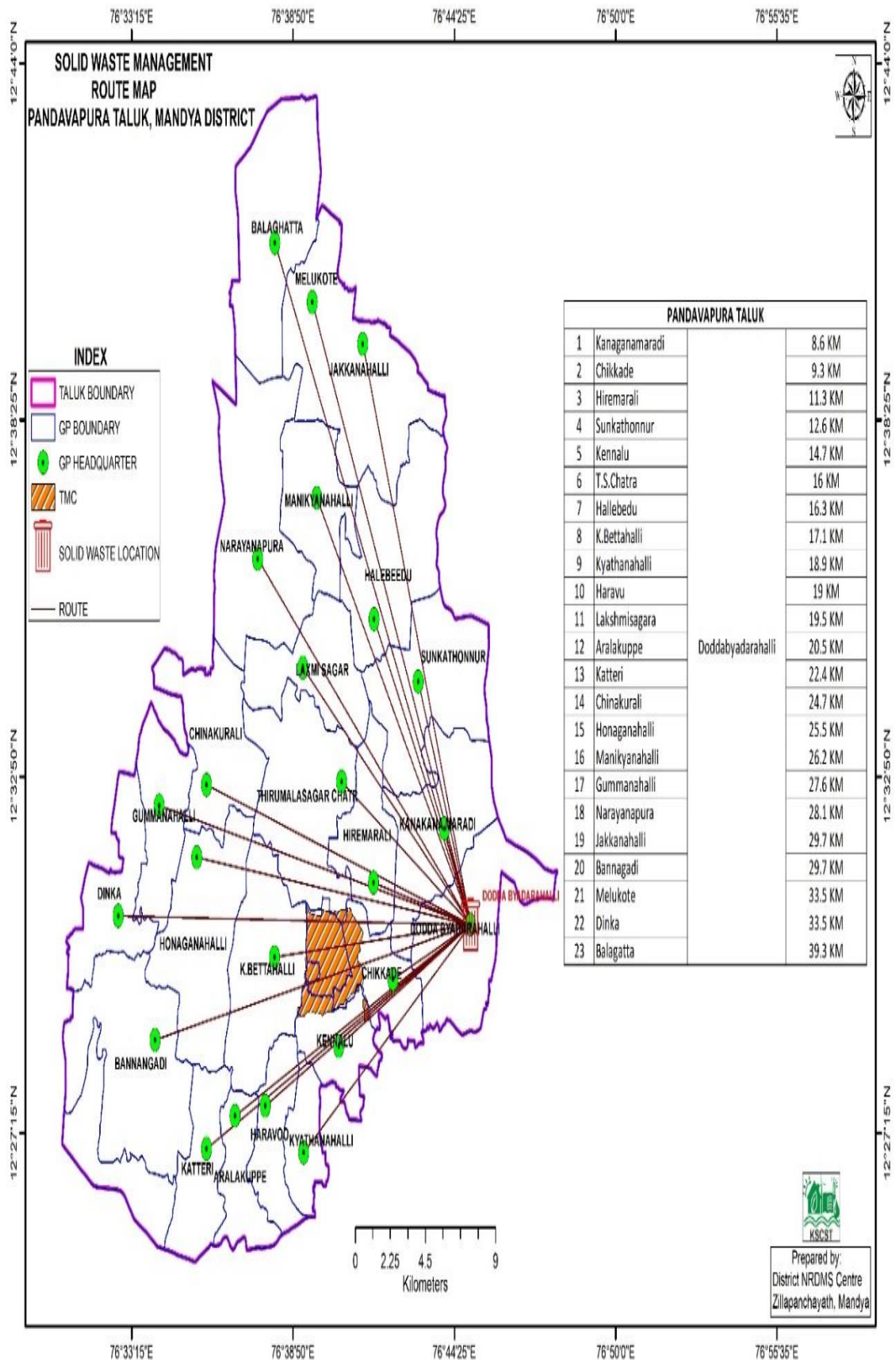
- To conduct more and more Science outreach Activities in Schools and Colleges .
- Convince, encourage and Motivate line departments, NGOs, Companies to start up new projects using GIS Technology with the support of NRDMS Centre .

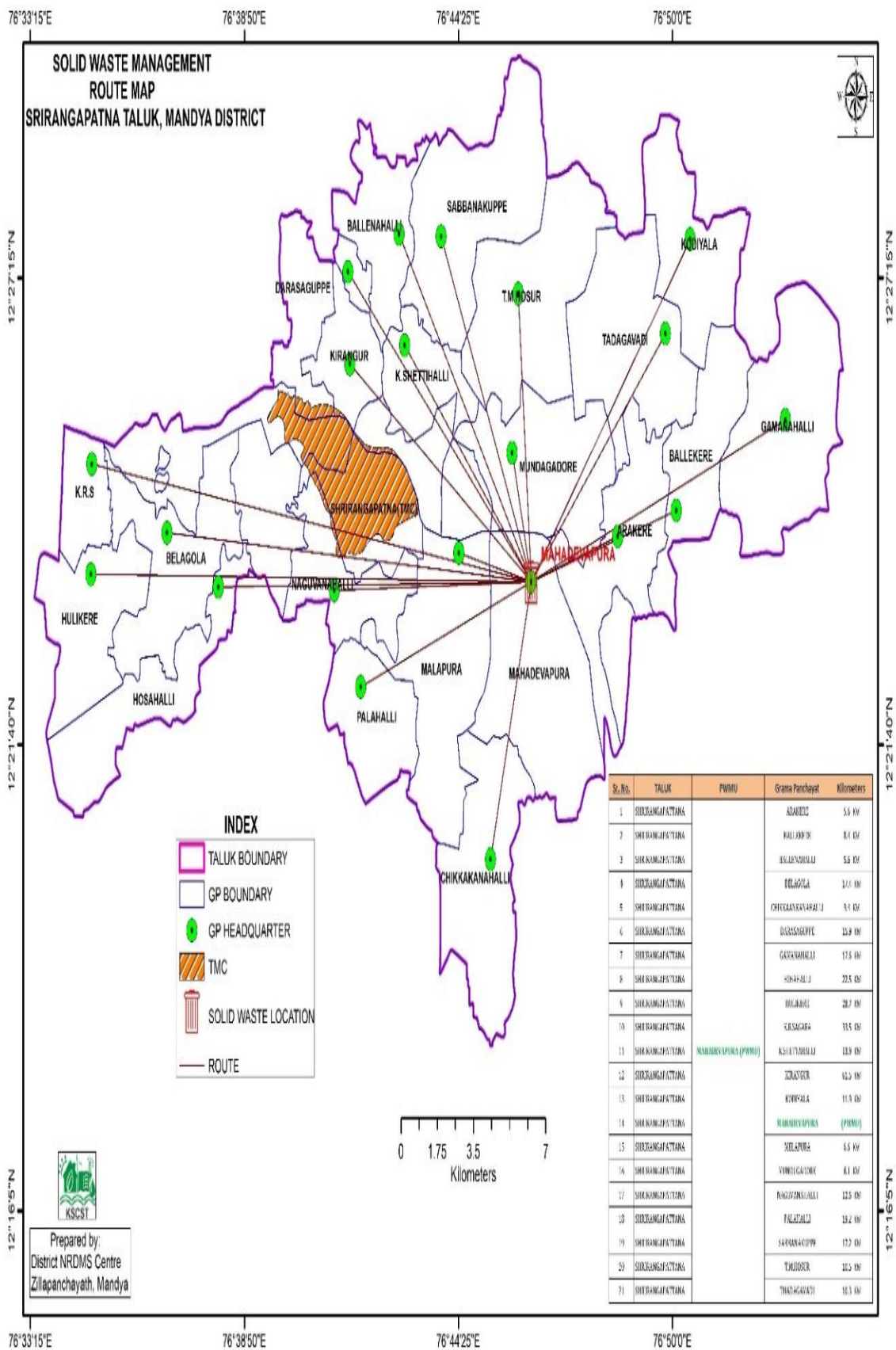
CHAPTER 9

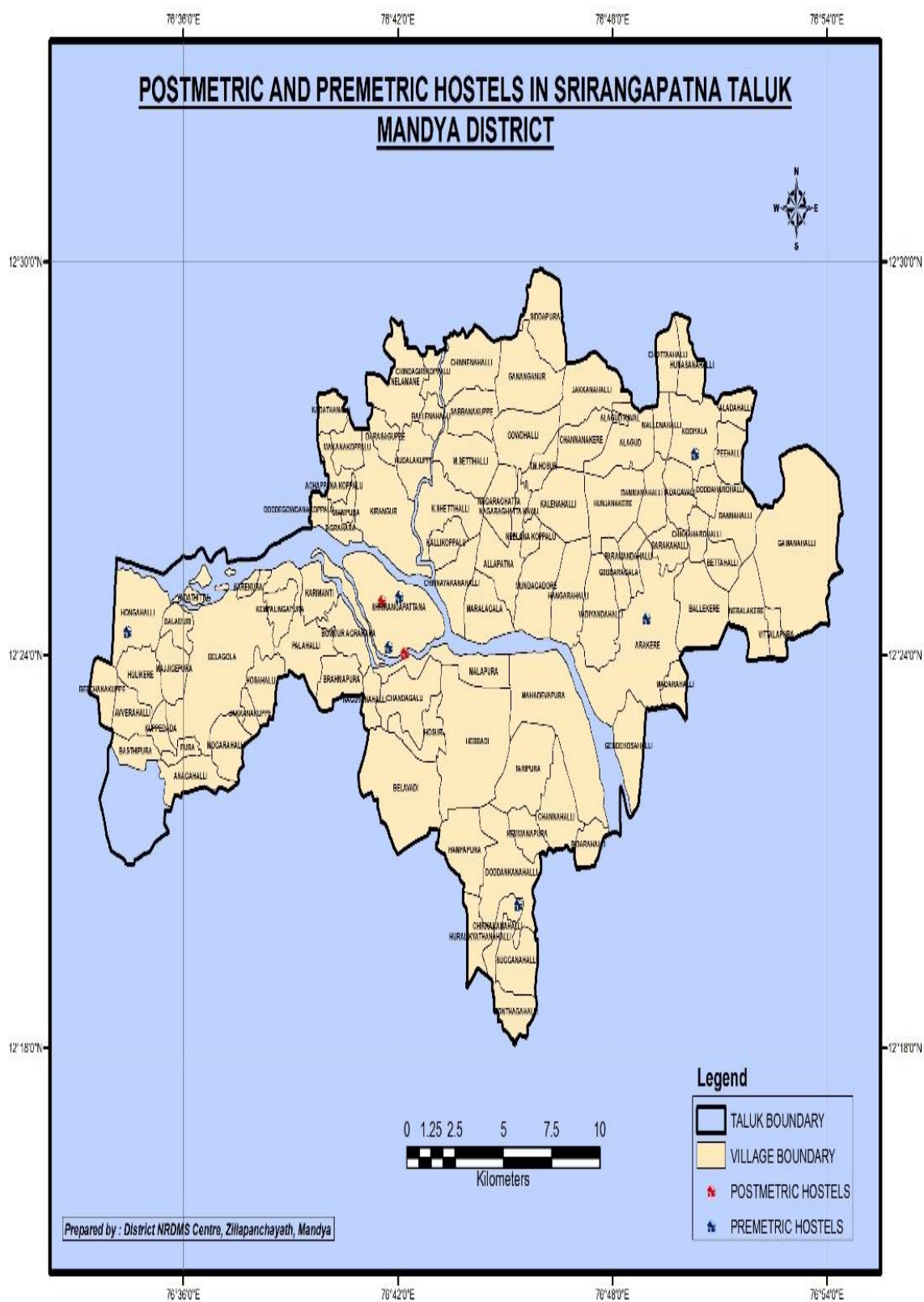
9.1) Annexures: Maps













Government of India
National Remote Sensing Centre
Indian Space Research Organisation
ISO 9001:2015



giz
German Cooperation
for International Development

Certificate



PRADEEP KUMAR B M

has successfully participated in the training

YUKTDHARA

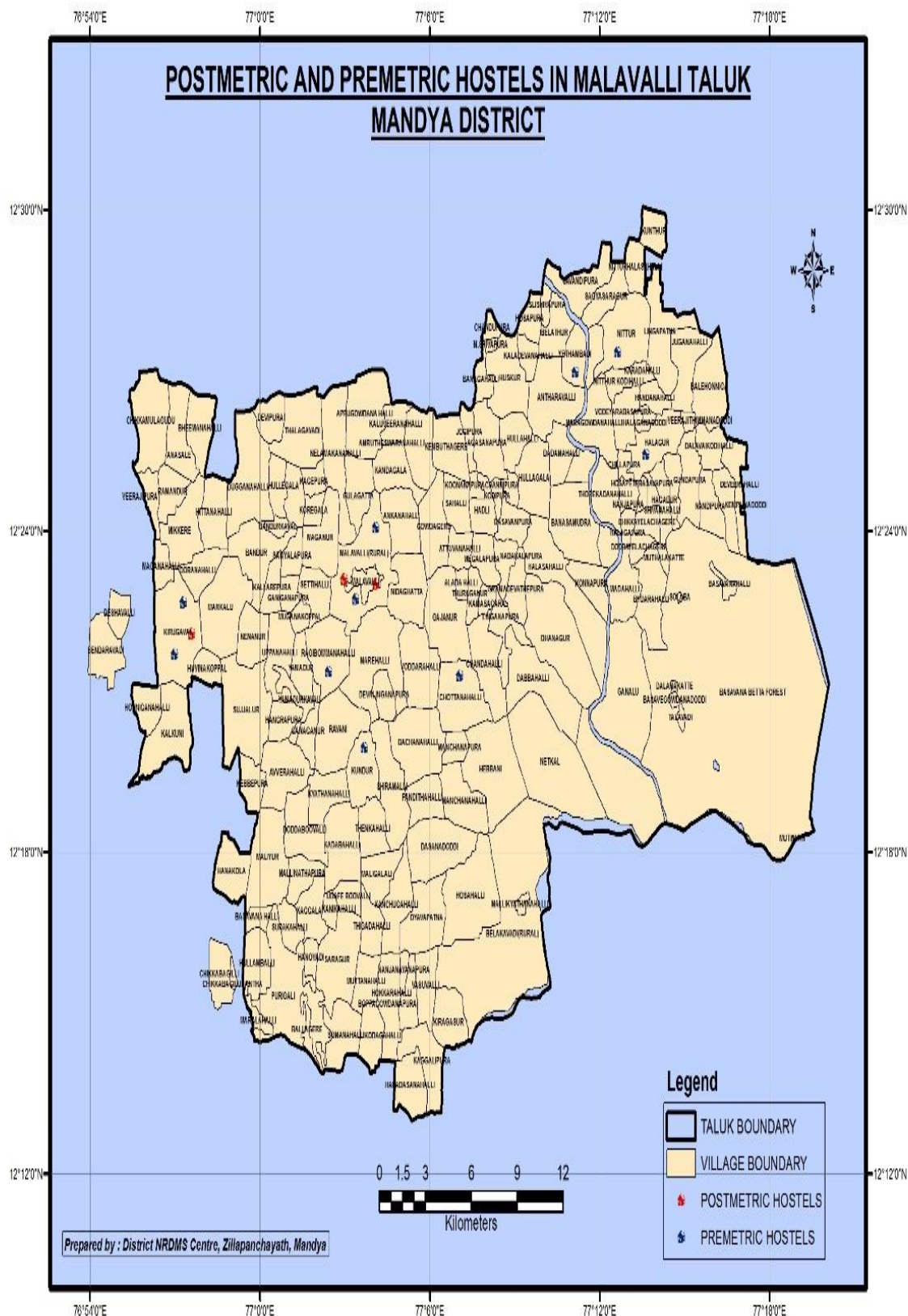
Content:

You successfully attended the course on **YUKTDHARA**

Topics:

Introduction to Yuktdhara Portal
Understanding the Coordinates & accuracy
Precursors of Yuktdhara Portal
Landscape Familiarization
Using Thematic maps & different GIS layers
Planning the activities using GIS tools & layers
Understanding the approval process in Yuktdhara
Complete work flow of Yuktdhara portal & NREGAsoft

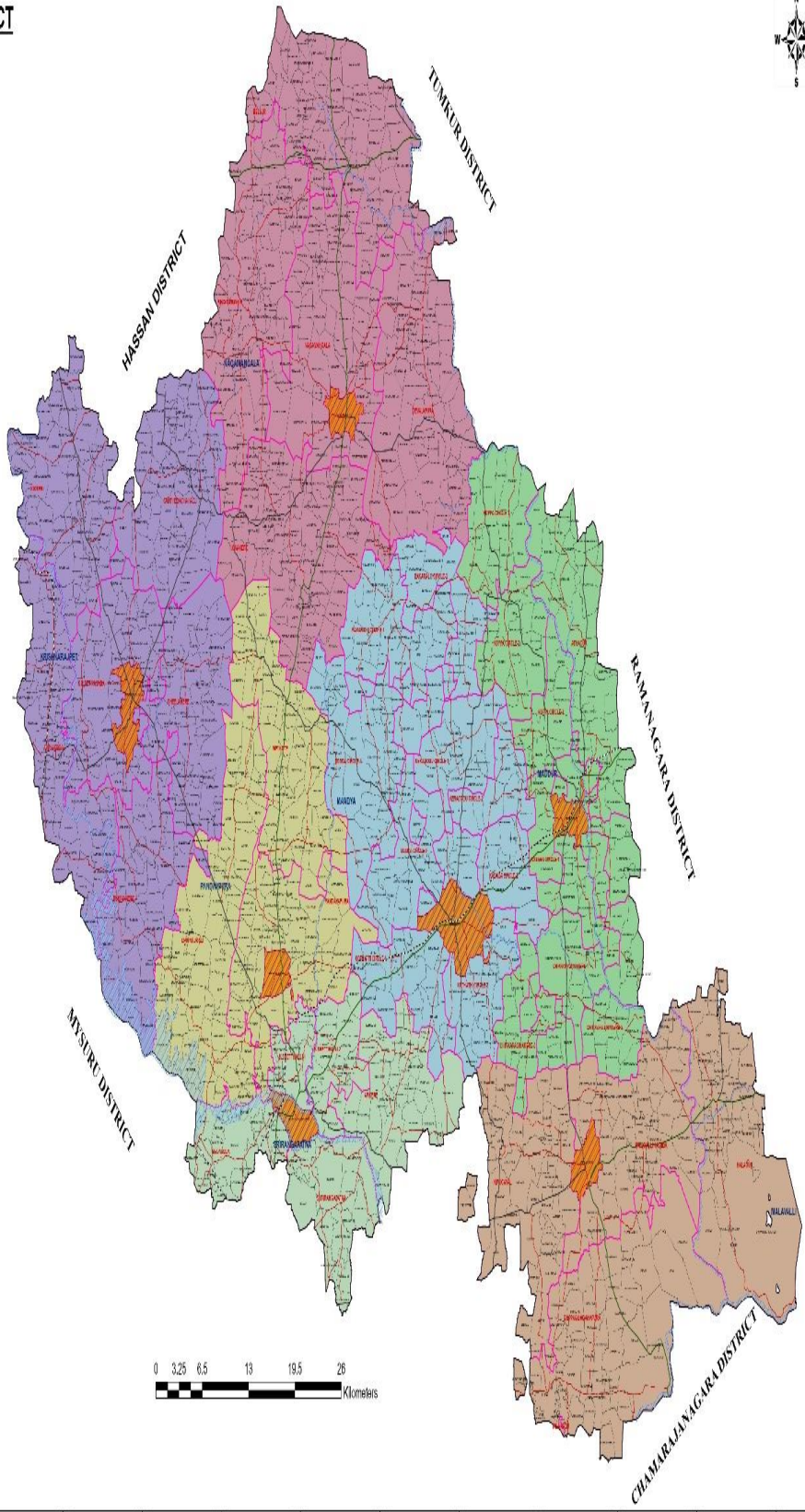
We do Learning



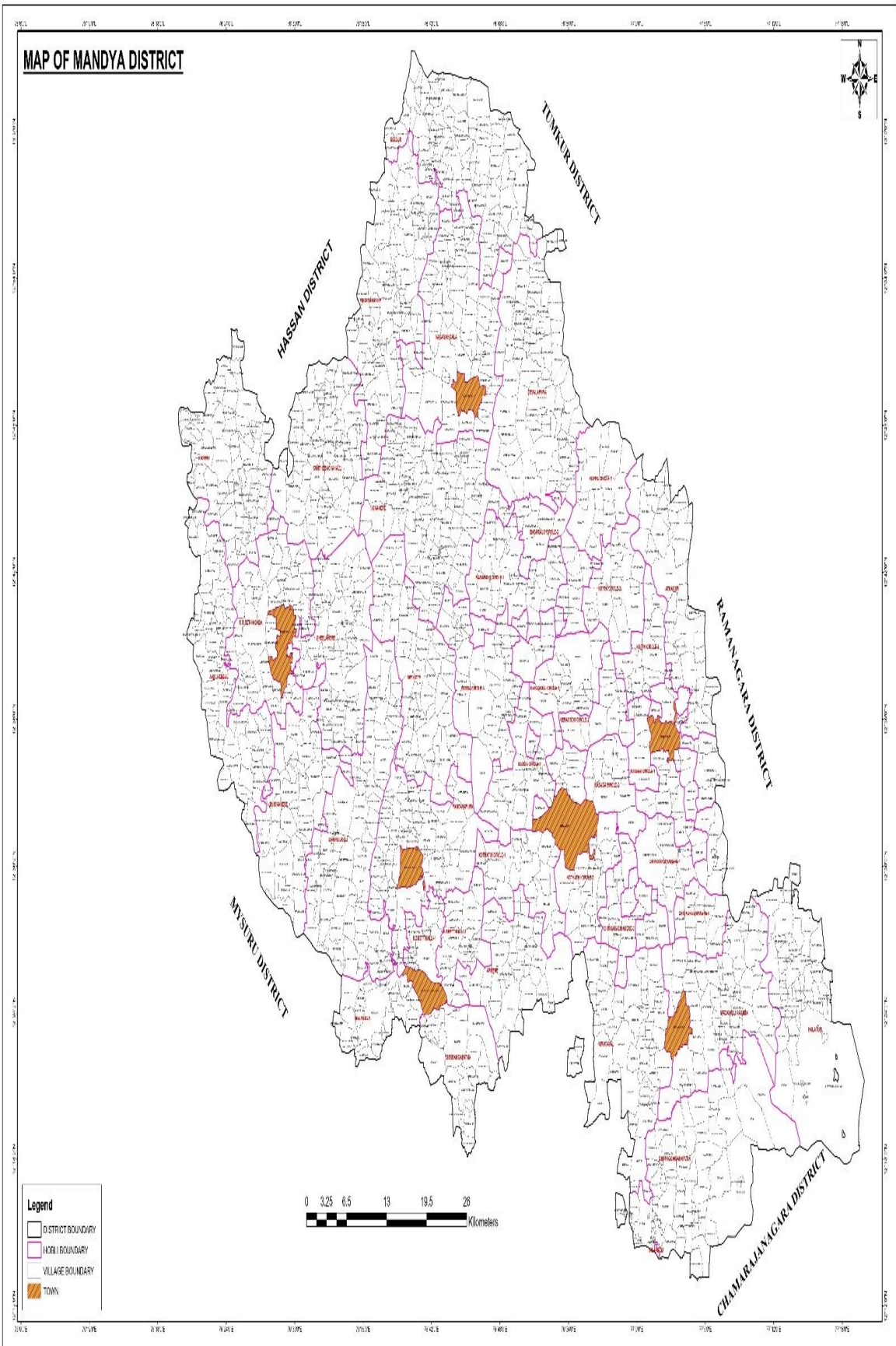
MAP OF MANDYA DISTRICT



- Legend**
- DISTRICT BOUNDARY
 - TALUK
 - <all other values>
 - TALUK_NAME
 - KRISHNAGALPET
 - MADUR
 - MALAVALLI
 - MANDYA
 - NAGAMANGALA
 - PINOMPUR
 - SIRSIKANGAL
 - HOBLI BOUNDARY
 - VILLAGE BOUNDARY
 - TOWN
 - NATIONAL HIGHWAY
 - STATE HIGHWAY
 - DISTRICT ROADS
 - RAILWAY LINE
 - RIVER & RESERVOIR



MAP OF MANDYA DISTRICT



- Legend**
- DISTRICT BOUNDARY
 - HOBLI BOUNDARY
 - VILLAGE BOUNDARY
 - TOWN

0 3.25 6.5 13 19.5 28
Kilometers

