

NATURAL RESOURCES DATA MANAGEMENT SYSTEM (NRDMS)

**MONTHLY ACTIVITY REPORT
August – November 2025**

**Submitted by
District NRDMS Centre
Zilla Panchayat, Hassan**



**Submitted to
Karnataka State Council for
Science and Technology (KSCST)
Indian Institute of Science Campus,
Bengaluru – 560012**

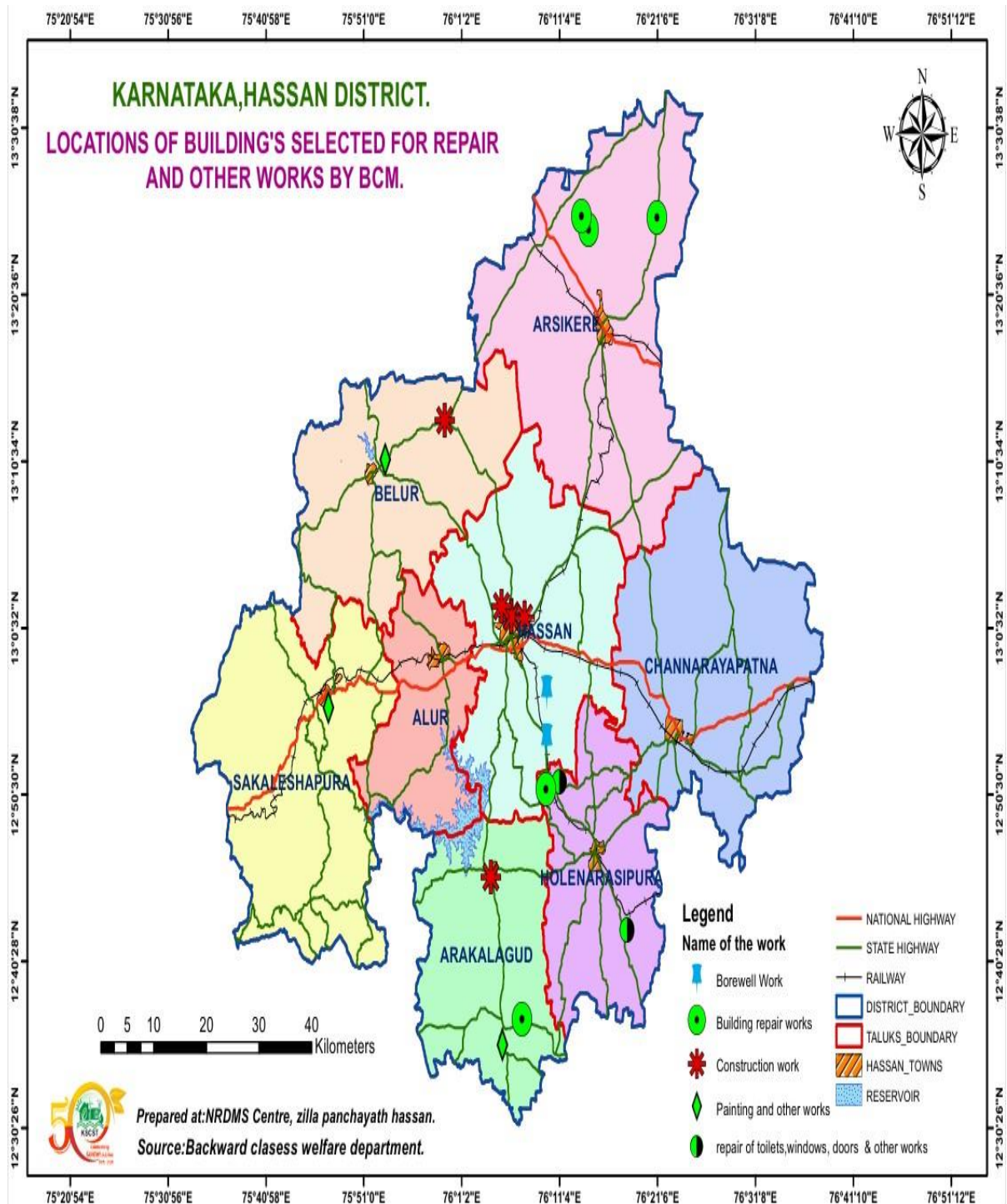
Contents	Page.no
1NRDMS Centre Activities (August 2025 - December 2025)	3
1.1 Action Plan Maps	3
1.1.1 Department: Backward classes welfare department	3
1.1.2 Department: Education department	4
1.1.3 Department: Fisheries department	5
1.1.4 Department: Forest department	6
1.1.5 Department: Health department	7
1.1.6 Department: Animal Husbandry & Veterinary department	8
1.1.7 Department: Women & Child Welfare department	9
1.1.8 Department: Agriculture department	10
1.1.9 Department: Ayush department	11
1.1.10 Department: Horticulture department	12
1.2 Department: Ayush department	13
1.3 Department: DC Office	14
1.4 Department: Arsikere Taluk Panchayath	15-17
1.5 Department: Hassan Taluk Panchayath	18-20
1.6 Department: Archaeology Department	21
1.7 Department: National Informative Centre	22
1.8 Department: Hassan Taluk Office	23-25
1.9 KGIS Road side Plantation work	26
1.10 Department: RDPR Department	27-29
2. Training Programmes Attended	29
3. Training Imparted to Line Departments	29
4. Science Outreach Activities- NILL	29
5. Conclusion	30
6. Annexures	30

1. NRDMS Centre Activities (August 2025 - November 2025)

1.1 Action Plan Maps

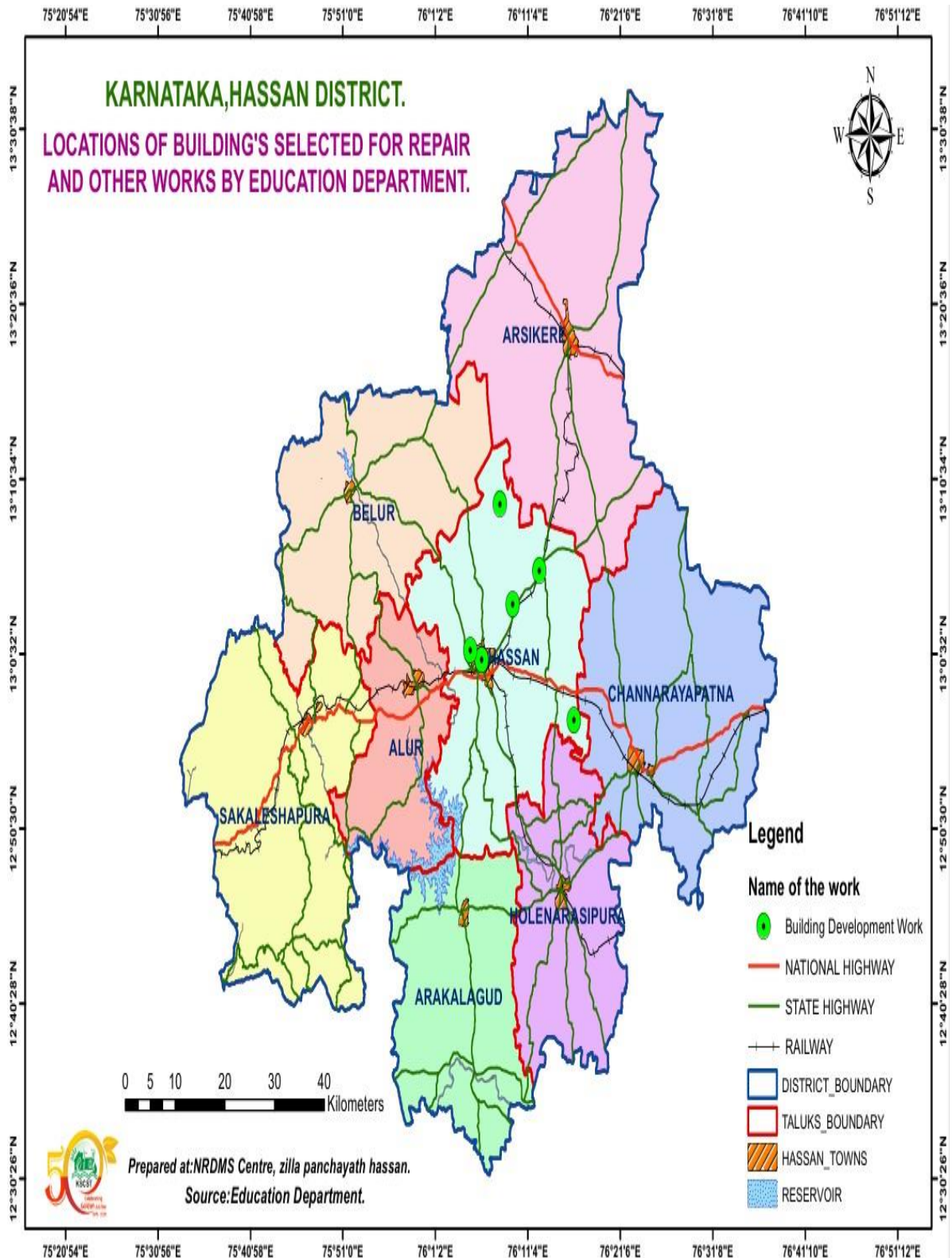
1.1.1 Department: Backward classes welfare department

The Backward class's welfare department requested this map and it was prepared on their orders. Thematic layers used in this study are District Boundary, Taluk Boundary, Reservoir, Town boundary, National highway, State highway, Railways, Building Spatial data This map helps BCM department officials to control duplication of work in their respective department.



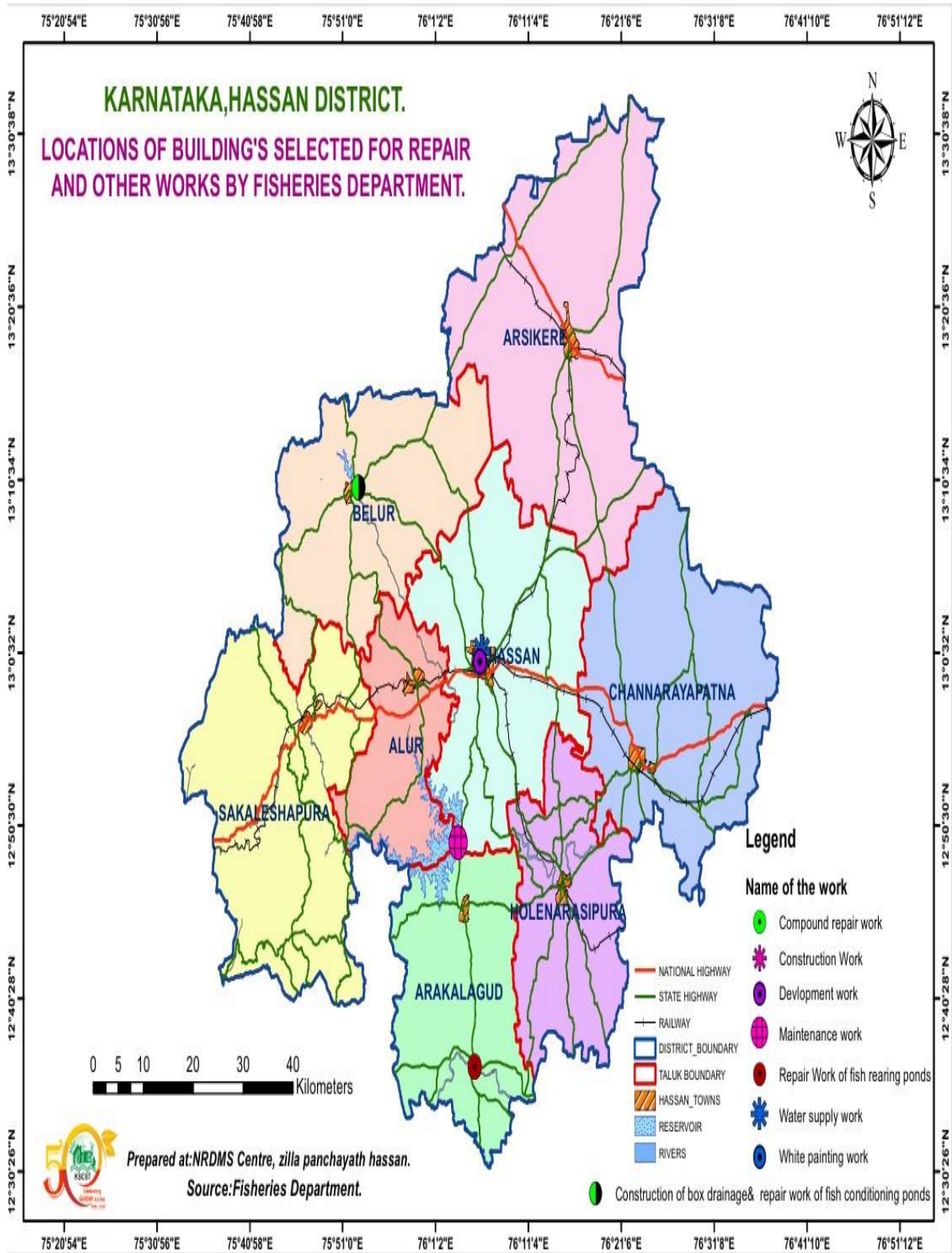
1.1.2 Department: Education department

The Education department requested this map and it was prepared on their orders. Thematic layers used in this study are District Boundary, Taluk Boundary, Reservoir, Town boundary, National highway, State highway, Railways, Building Spatial data This map helps Education department officials to control duplication of work in their respective department.



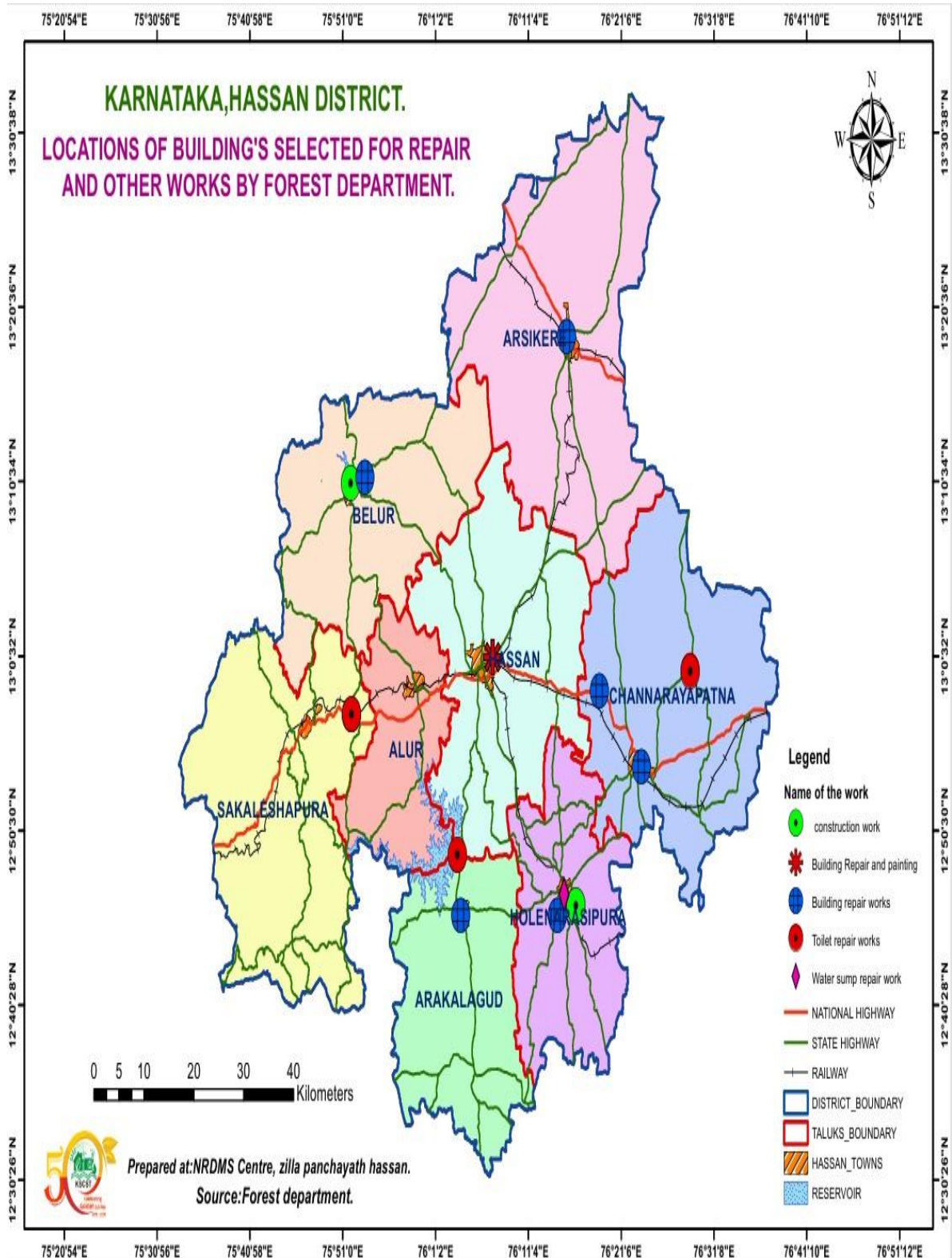
1.1.3 Department: Fisheries department

The Fisheries department requested this map and it was prepared on their orders. Thematic layers used in this study are District Boundary, Taluk Boundary, Reservoir, Town boundary, National highway, State highway, Railways, Building Spatial data This map helps Fisheries department officials to control duplication of work in their respective department.



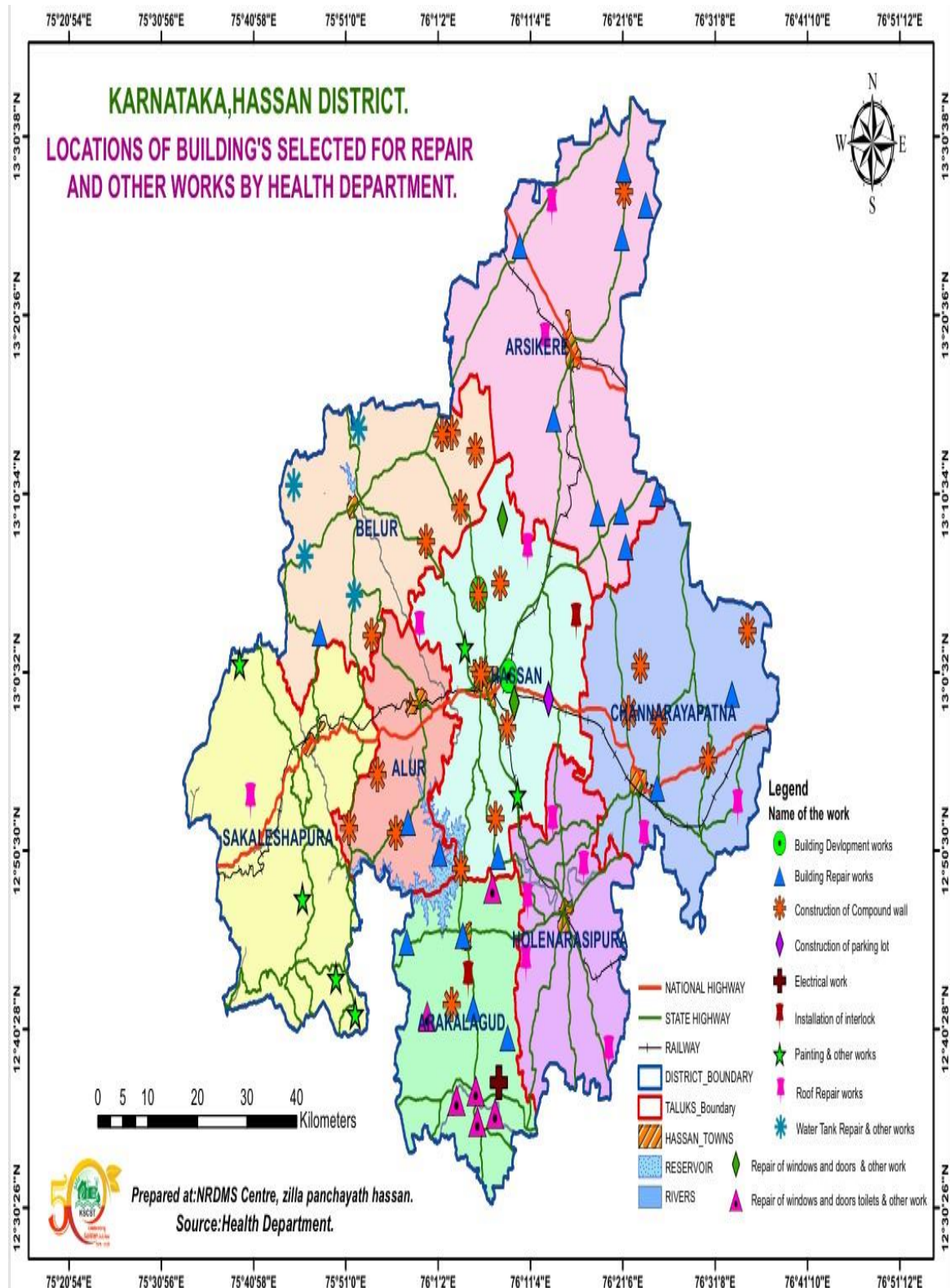
1.1.4 Department: Forest department

The Forest department requested this map and it was prepared on their orders. Thematic layers used in this study are District Boundary, Taluk Boundary, Reservoir, Town boundary, National highway, State highway, Railways, Building Spatial data This map helps Forest department officials to control duplication of work in their respective department.



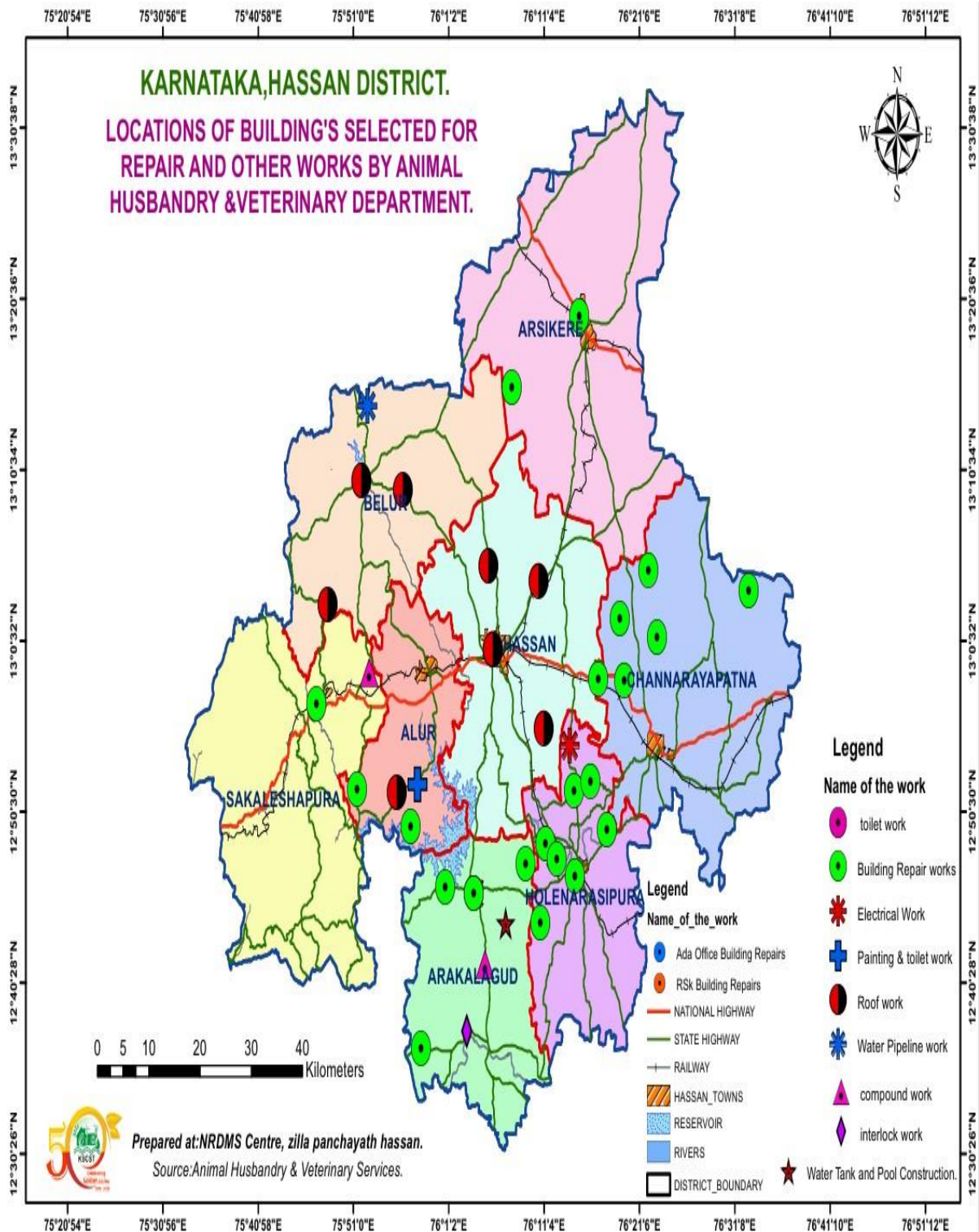
1.1.5 Department: Health department

The Health department requested this map and it was prepared on their orders. Thematic layers used in this study are District Boundary, Taluk Boundary, Reservoir, Town boundary, National highway, State highway, Railways, Building Spatial data This map helps Health department officials to control duplication of work in their respective department.



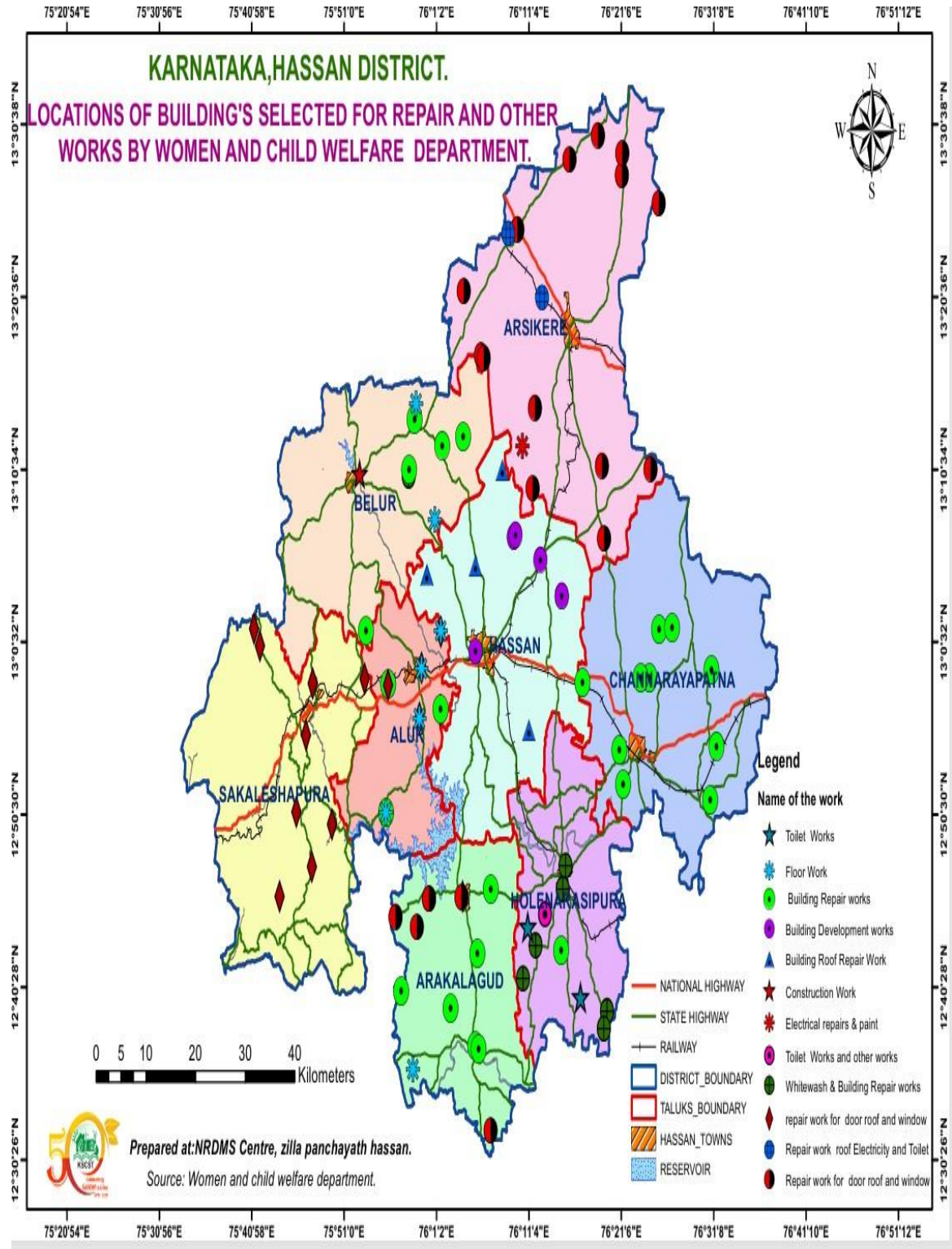
1.1.6 Department: Animal Husbandry & Veterinary department

The Animal Husbandry & Veterinary department requested this map and it was prepared on their orders. Thematic layers used in this study are District Boundary, Taluk Boundary, Reservoir, Town boundary, National highway, State highway, Railways, Building Spatial data This map helps Animal Husbandry & Veterinary department officials to control duplication of work in their respective department.



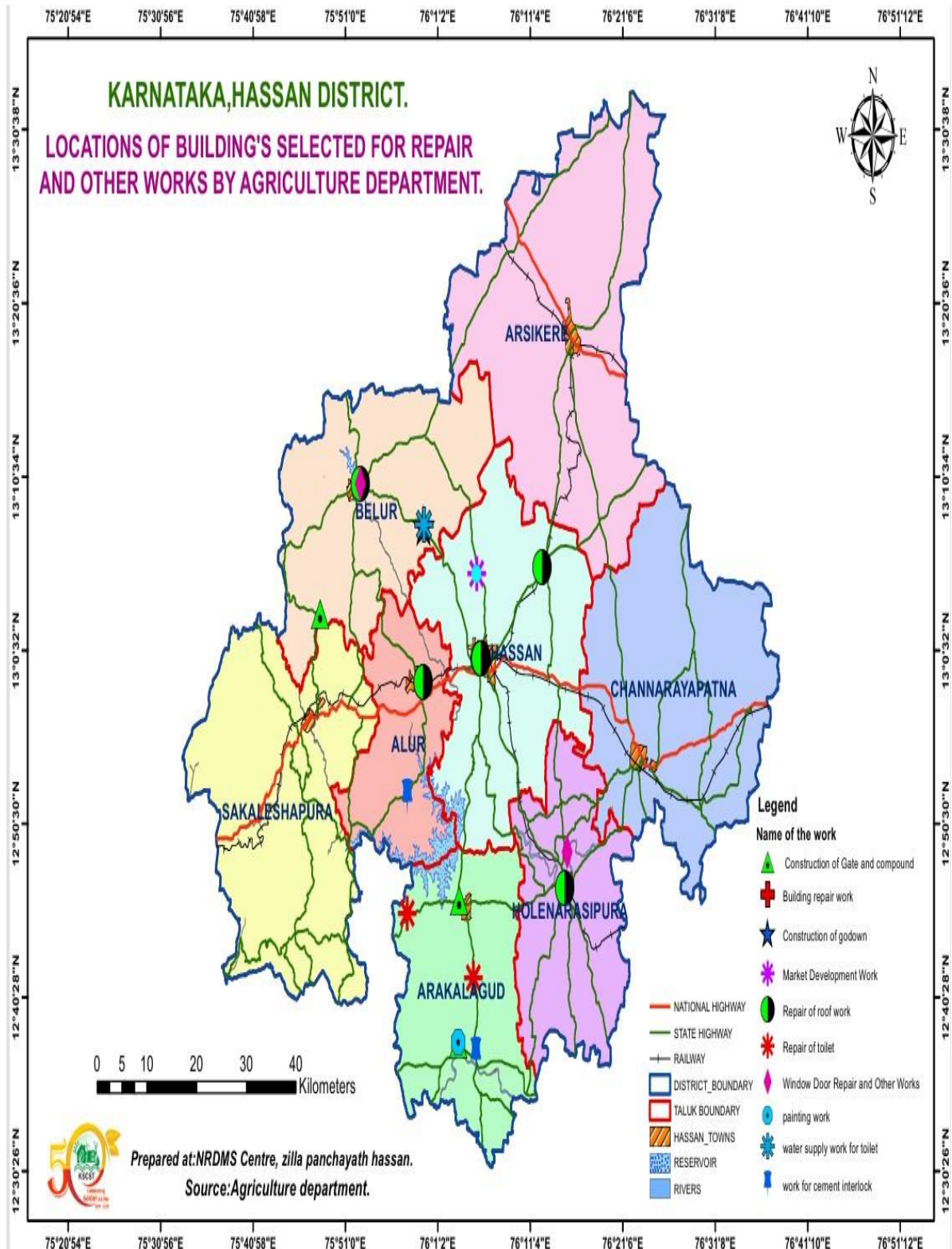
1.1.7 Department: Women & Child Welfare department

The Women & Child Welfare department requested this map and it was prepared on their orders. Thematic layers used in this study are District Boundary, Taluk Boundary, Reservoir, Town boundary, National highway, State highway, Railways, Building Spatial data This map helps Women & Child Welfare department officials to control duplication of work in their respective department.



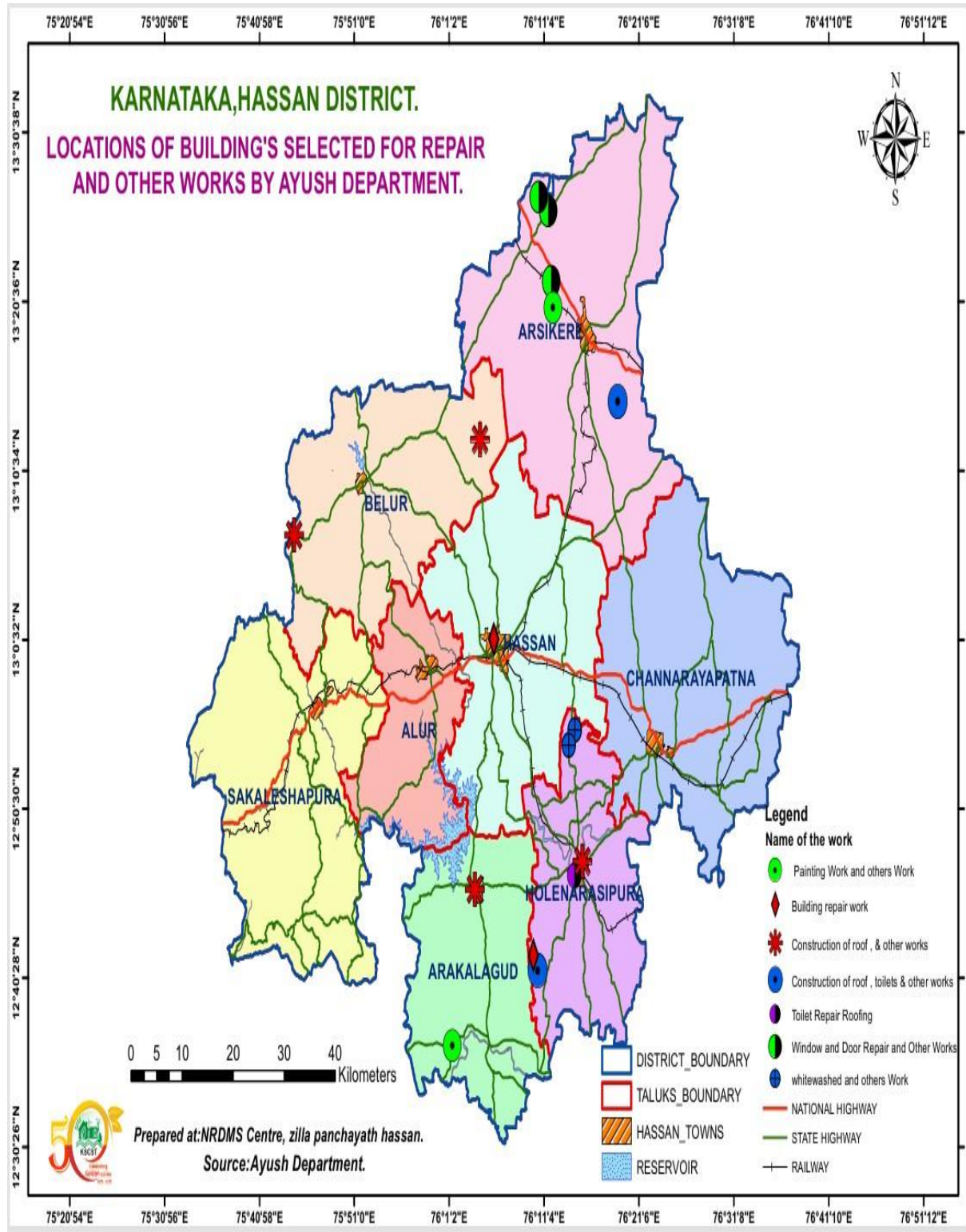
1.1.8 Department: Agriculture department

The Agriculture department requested this map and it was prepared on their orders. Thematic layers used in this study are District Boundary, Taluk Boundary, Reservoir, Town boundary, National highway, State highway, Railways, Building Spatial data This map helps Agriculture department officials to control duplication of work in their respective department.



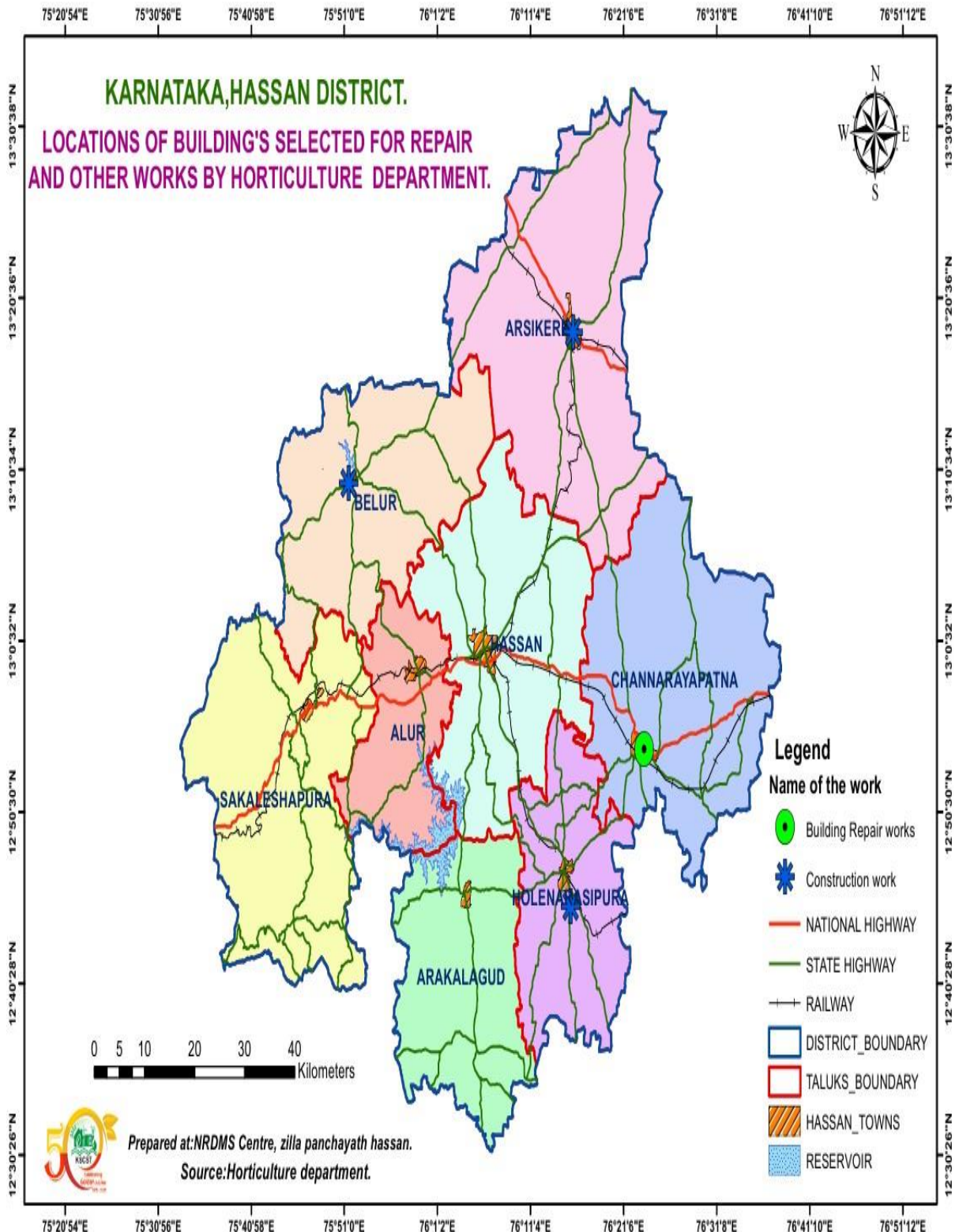
1.1.9 Department: Ayush department

The Ayush department requested this map and it was prepared on their orders. Thematic layers used in this study are District Boundary, Taluk Boundary, Reservoir, Town boundary, National highway, State highway, Railways, Building Spatial data This map helps Ayush department officials to control duplication of work in their respective department.



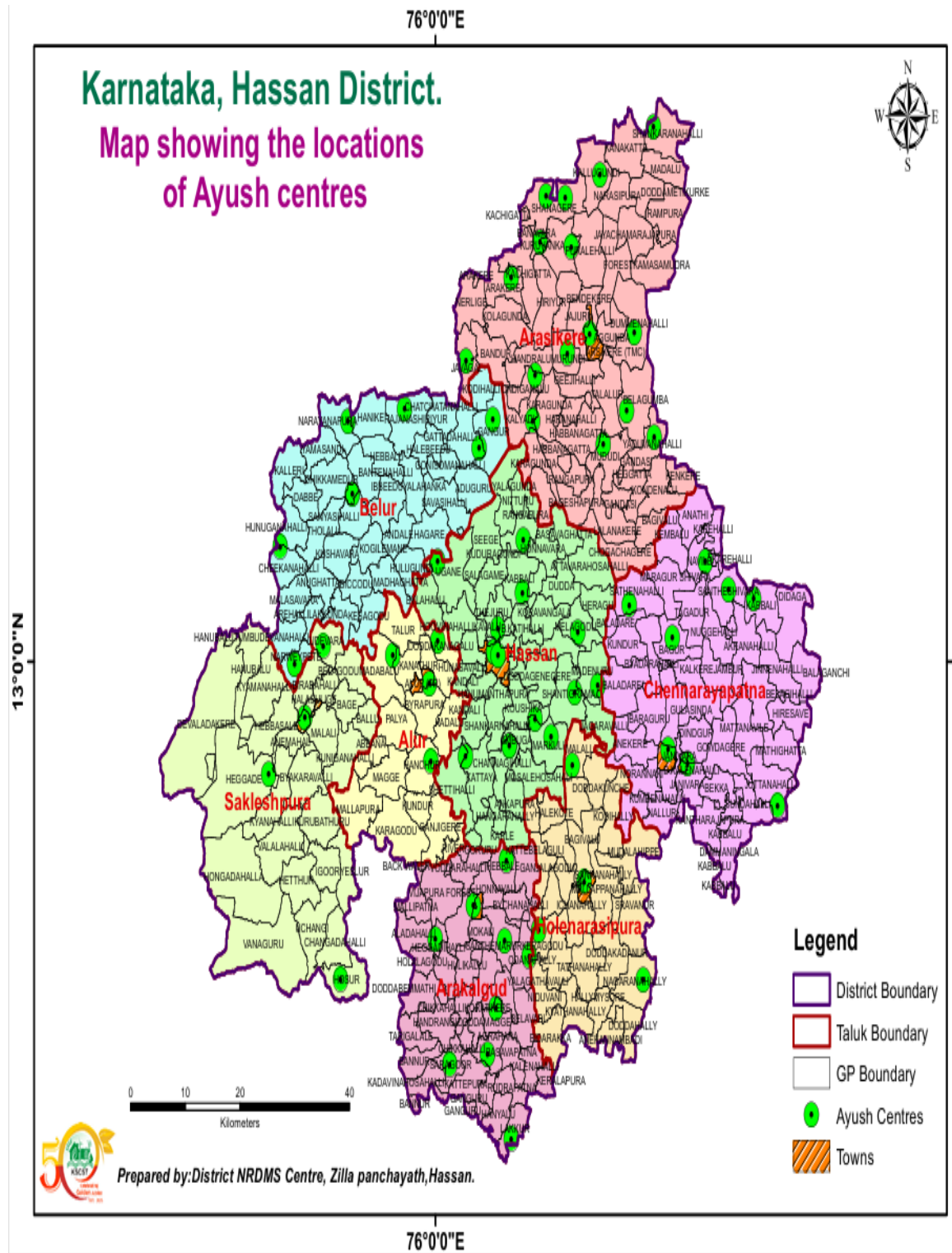
1.1.10 Department: Horticulture department

The Horticulture department requested this map and it was prepared on their orders. Thematic layers used in this study are District Boundary, Taluk Boundary, Reservoir, Town boundary, National highway, State highway, Railways, Building Spatial data This map helps Horticulture department officials to control duplication of work in their respective department.



1.2 Department: Ayush department

The Ayush department requested this map and it was prepared on their orders. Thematic layers used in this study are District Boundary, Taluk Boundary, GP Boundary, Town boundary and Ayush Centres data, This map helped them know where the Ayush departments were located so they could do their work accordingly.



1.3 Department: DC Office

The District Collector was organized a bike rally as part of International Democracy Day, because of that on the orders of the DC This map was prepared. This map is helpful for to know the bike route starting point and destination place for those going to the bike rally.

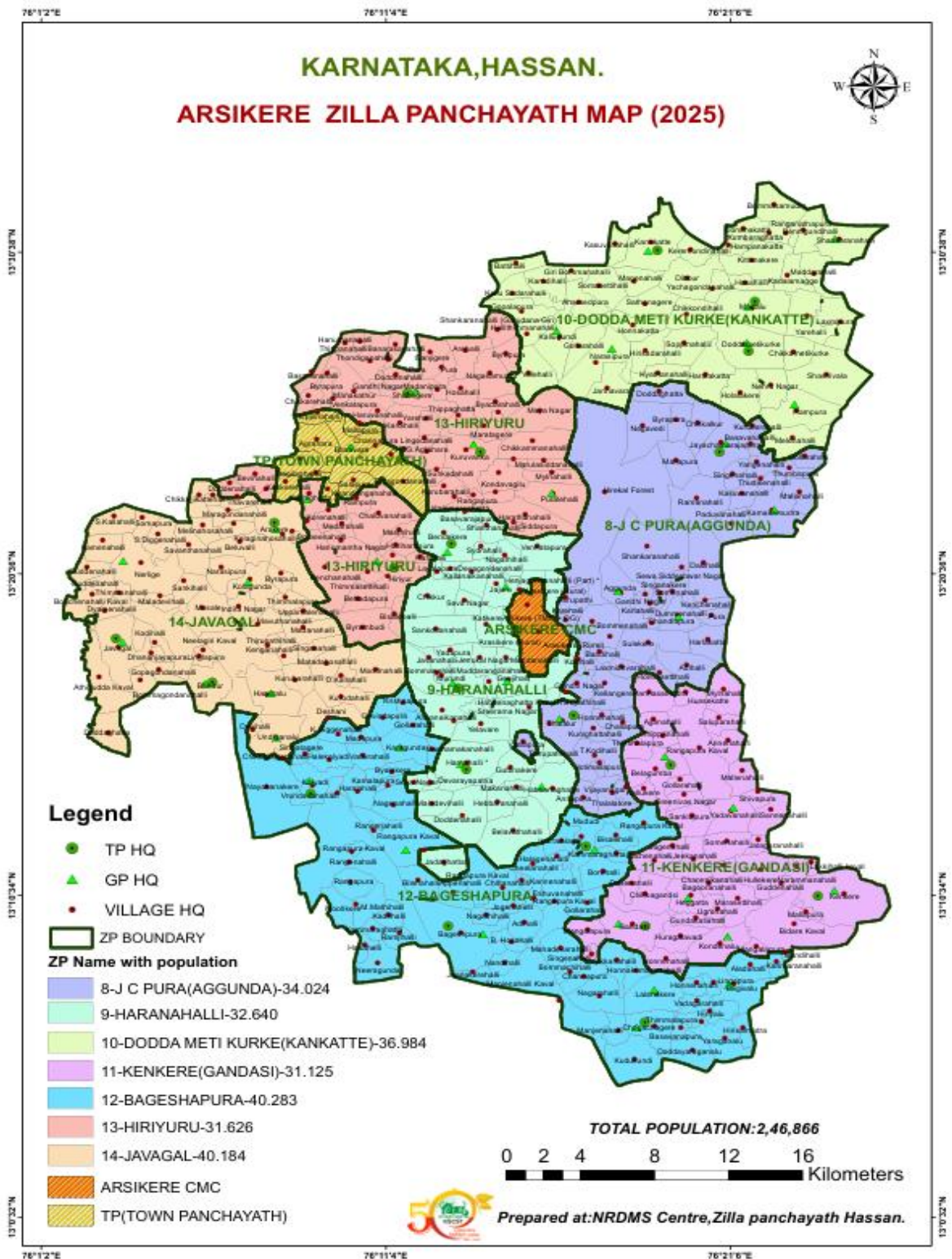


1.4 Department: Arsikere Taluk Panchayath

Arsikere taluk panchayath Tahashildar requested this map and it was prepared on their orders. Thematic layers used in this study are Taluk Boundary, Town boundary, GP boundary taluk panchayath head quarter, GP Head quarter, Village Head quarter, This map helps to Arsikere taluk panchayath officials to know the delimitations of the villages.



Delimitation Map of Arsikere Taluk Panchayath



Delimitation Map of Arsikere Zilla Panchayath

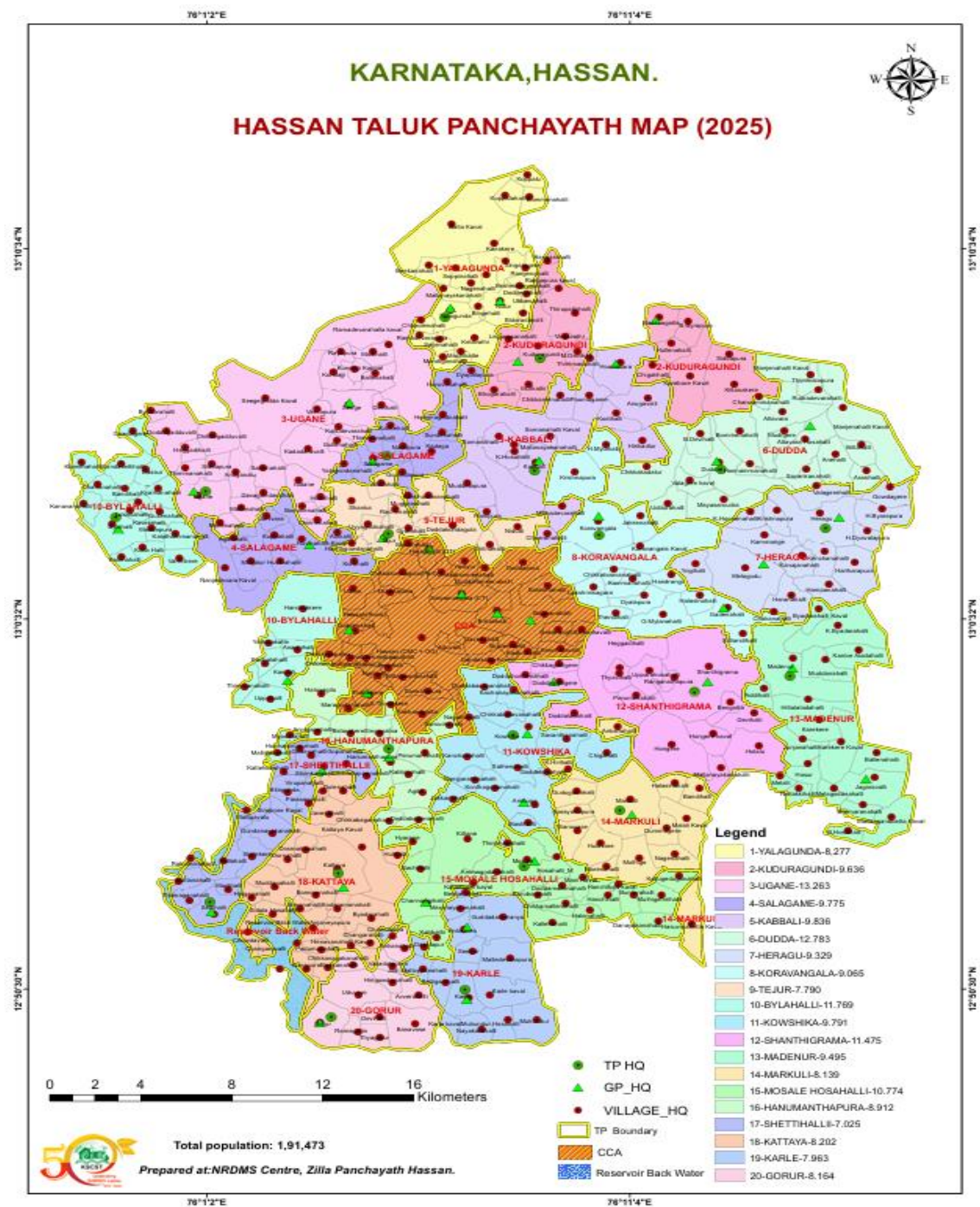
Delimitation Map of Arsikere Taluk and Zilla Panchayath



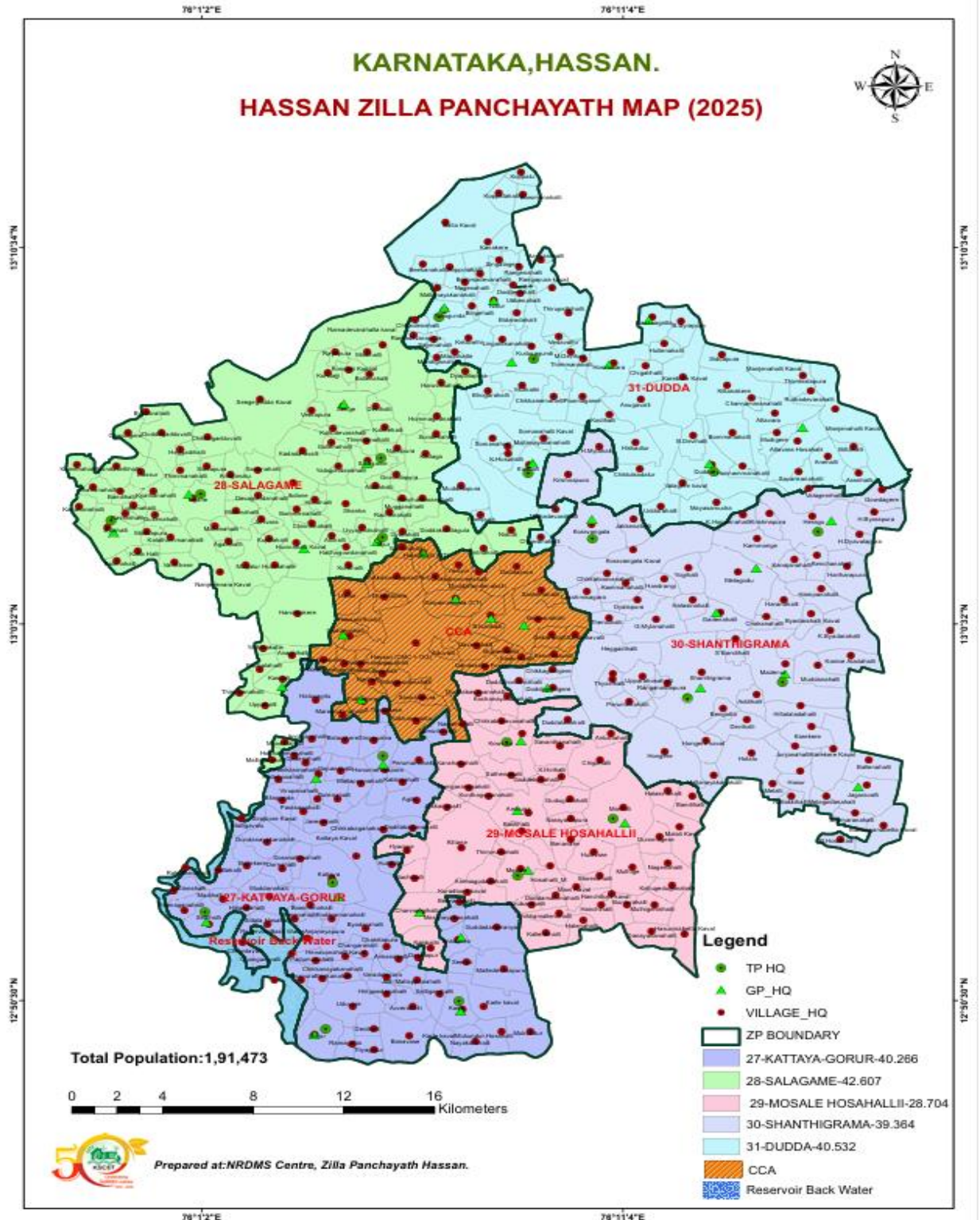
1.5 Department: Hassan Taluk Panchayath

Hassan taluk panchayath Tahashildar requested this map and it was prepared on their orders. Thematic layers used in this study are Taluk Boundary, Town boundary, GP boundary, taluk panchayath head quarter, GP Head quarter, Village Head quarter, This map helps to Hassan taluk panchayath officials to know the delimitations of the villages.

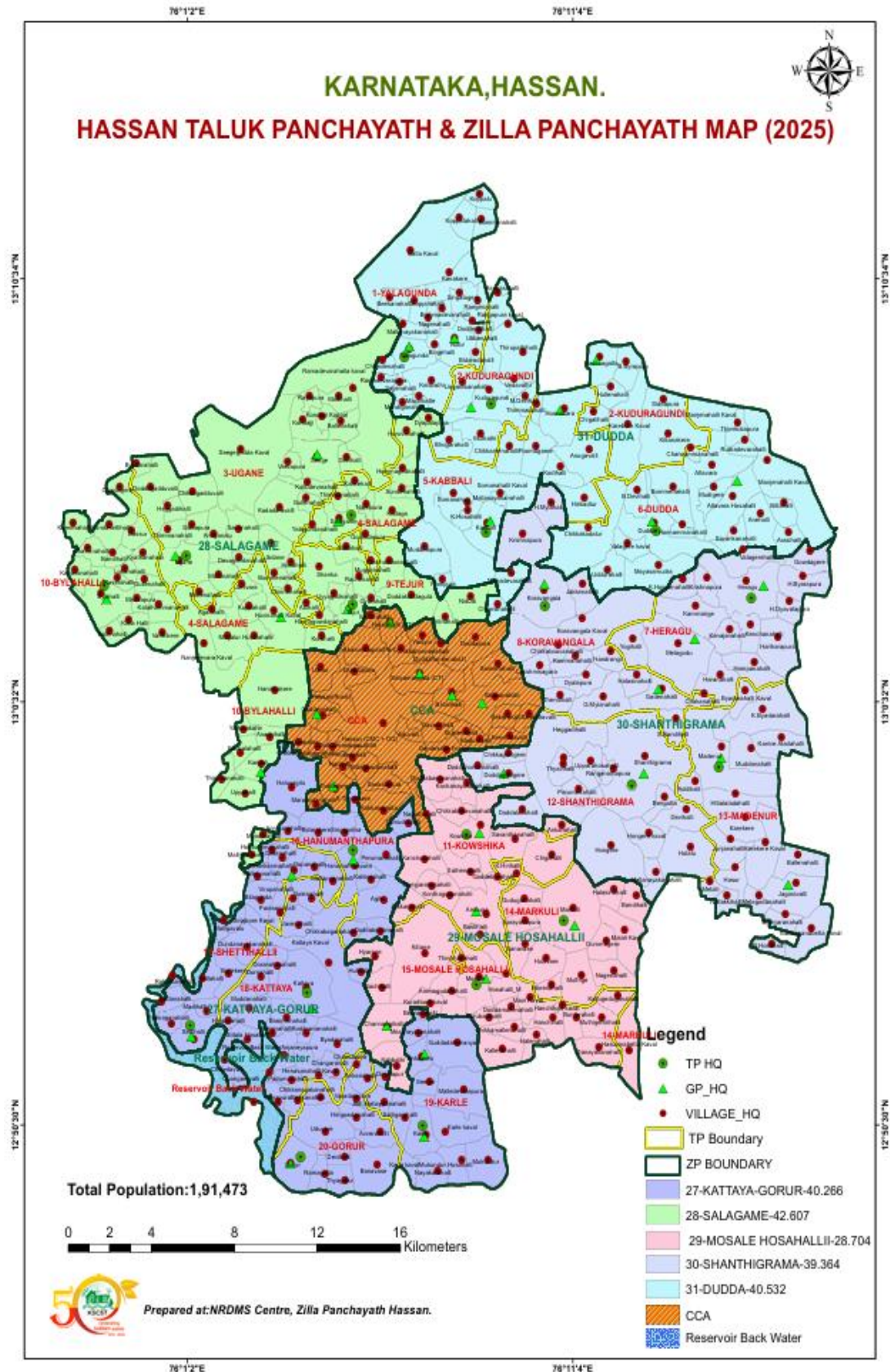
Delimitation Map of Hassan Taluk Panchayath



Delimitation Map of Hassan Zilla Panchayath

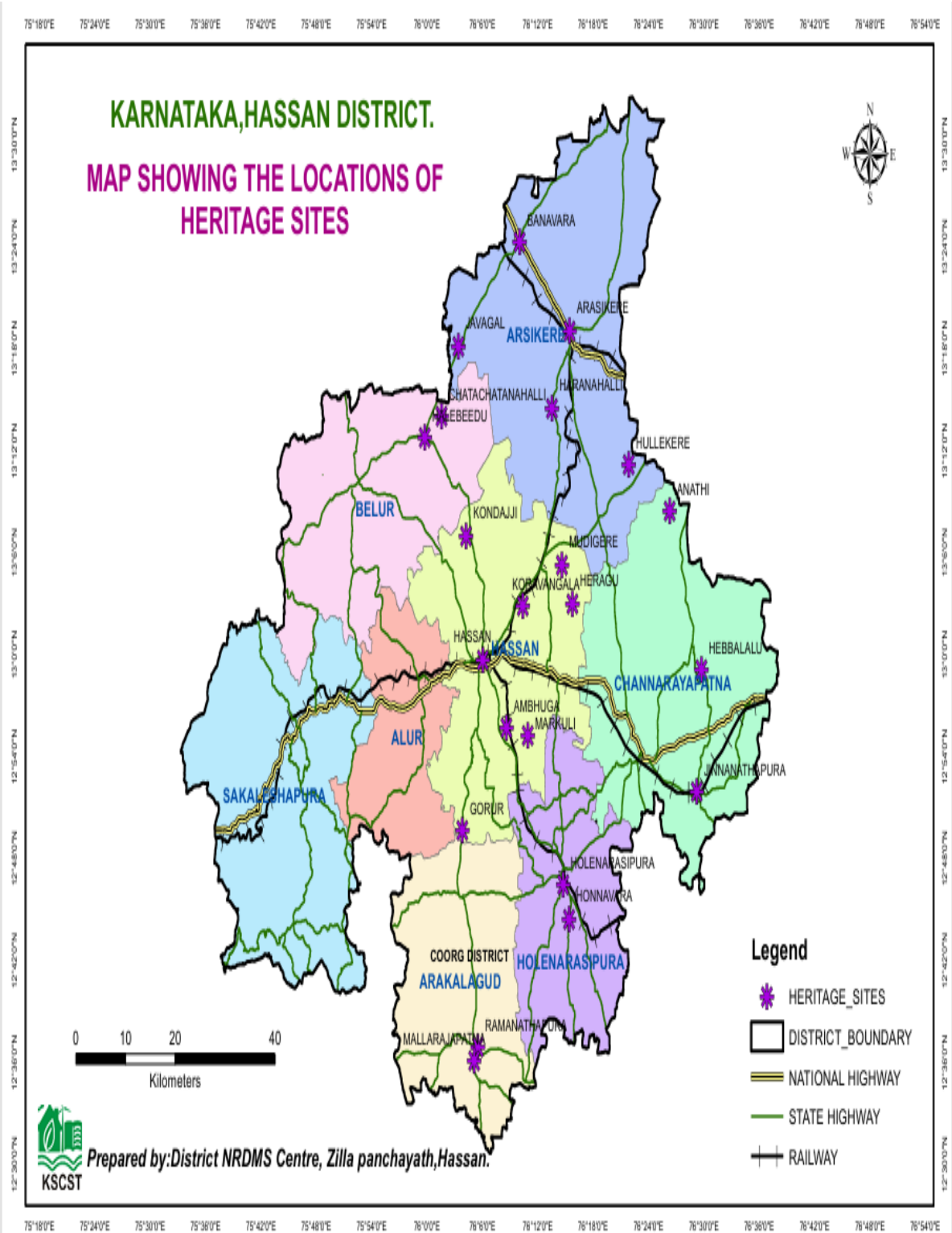


Delimitation Map of Hassan Taluk and Zilla Panchayath



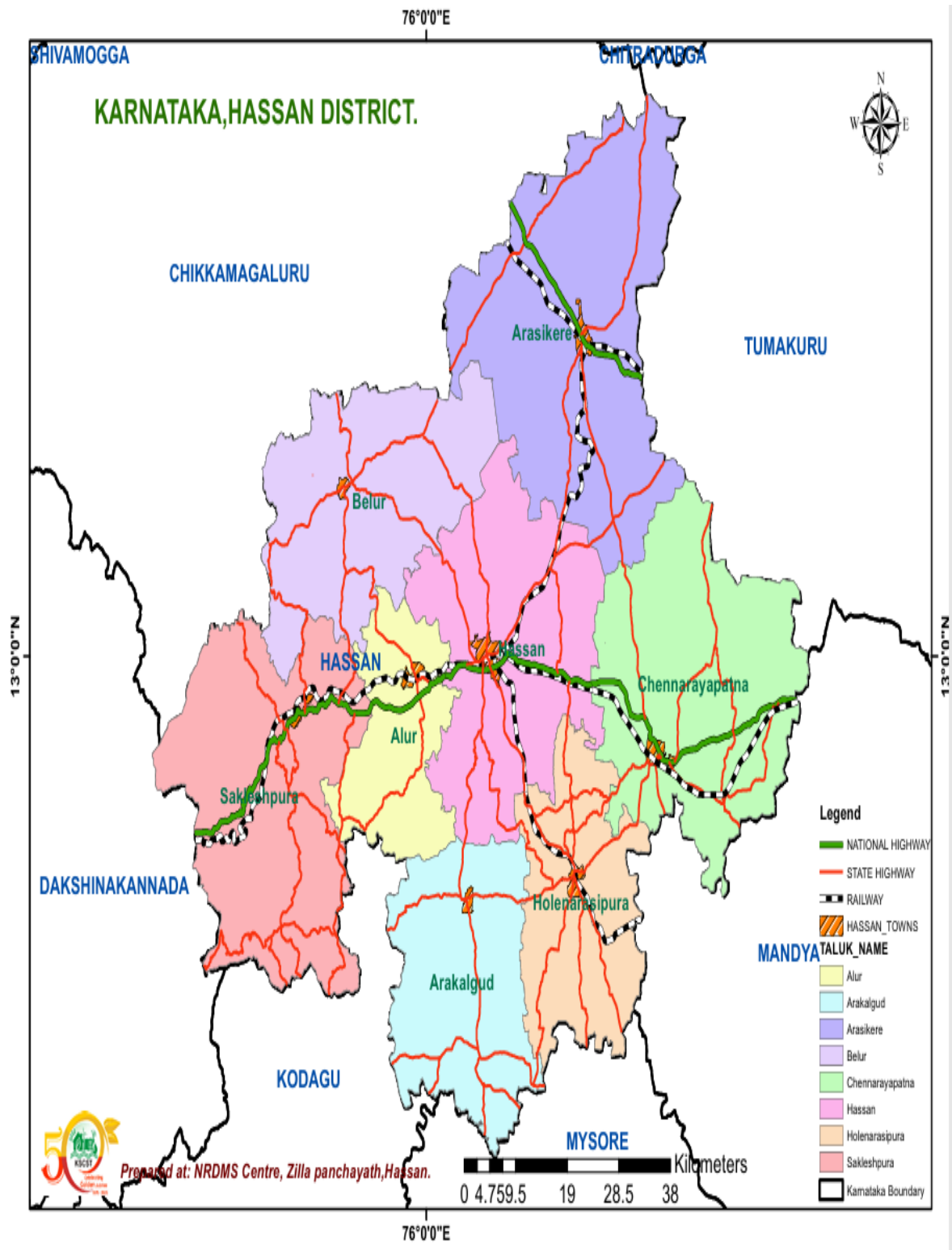
1.6 Department: Archaeology Department

The Archeology department requested this map and it was prepared on their orders. Thematic layers used in this study are District Boundary, Taluk Boundary, National highway, State highway, Railways, and spatial data of Heritage sites, This map helps to Archeology department officials can easily know the locations of heritage sites of this district.



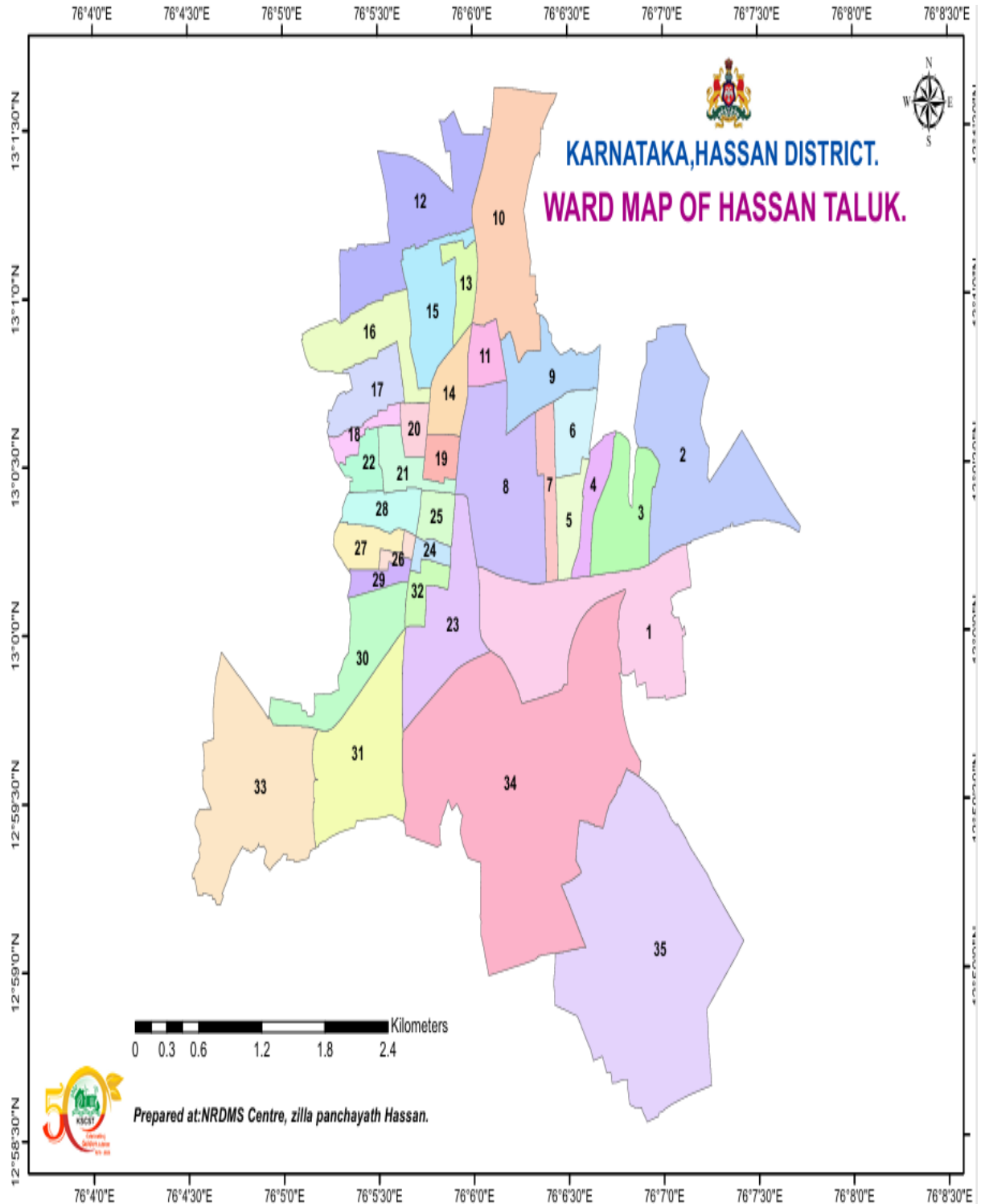
1.7 Department: National Informative Centre

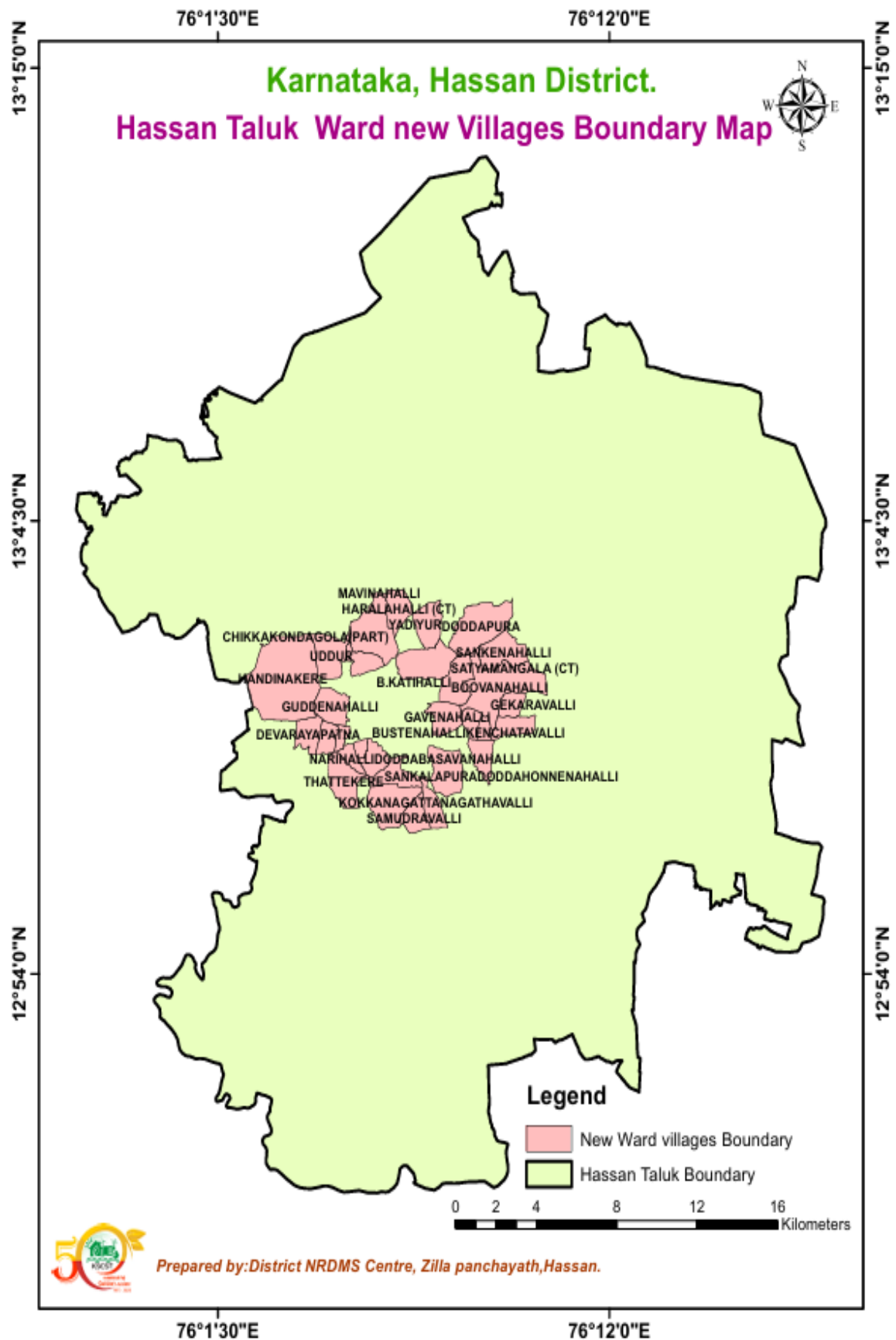
The NIC requested this map and it was prepared on their orders. Thematic layers used in this study are District Boundary, Taluk Boundary, National highway, State highway, Railways, Town boundary.

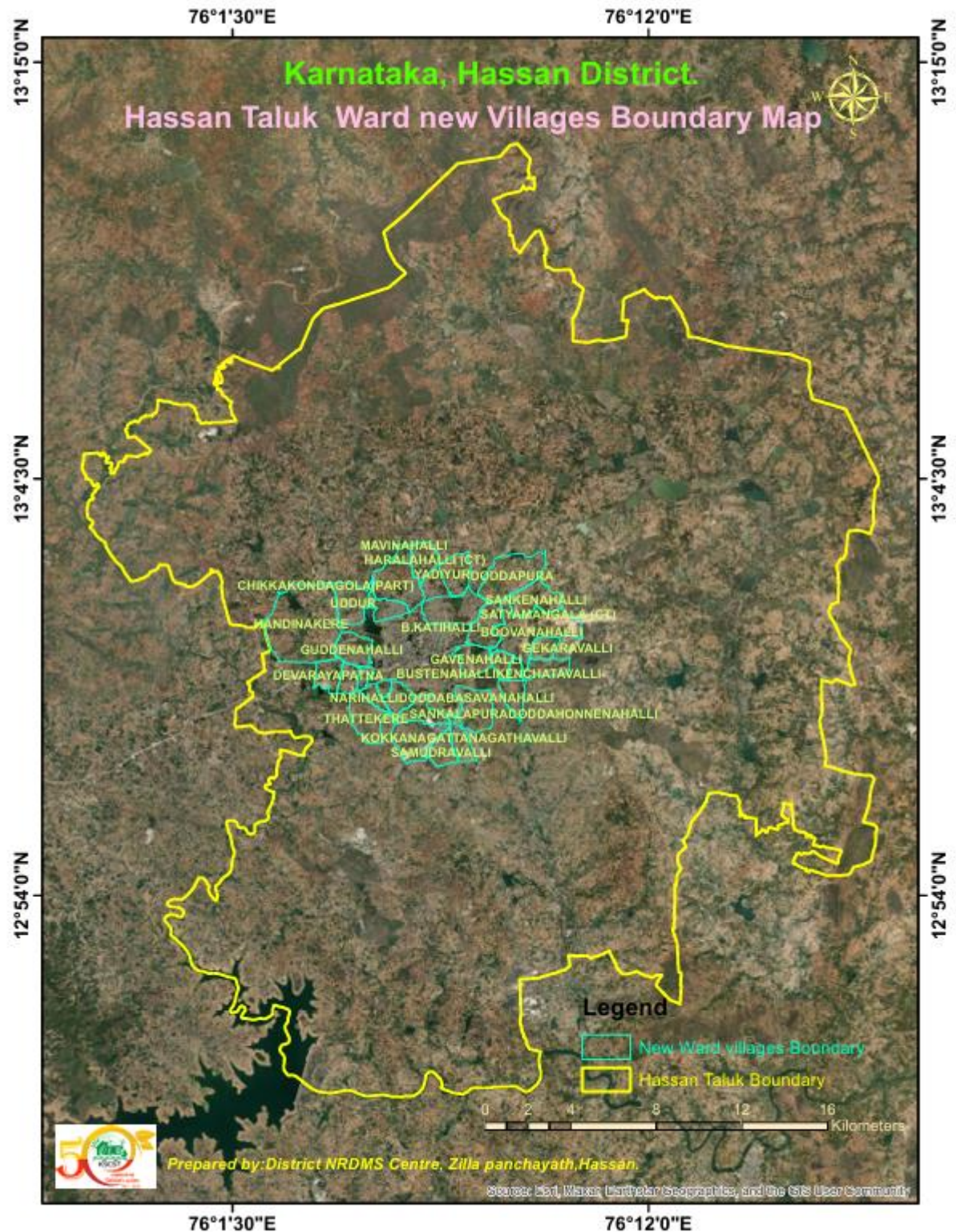


1.8 Department: Hassan Taluk Office

Hassan Taluk Tahashildar requested this map and it was prepared on their orders. Thematic layers used in this study are Taluk Boundary and new ward villages boundary, It helps to taluk office officials to know which are villages comes under Hassan ward and do their respective works accordingly.

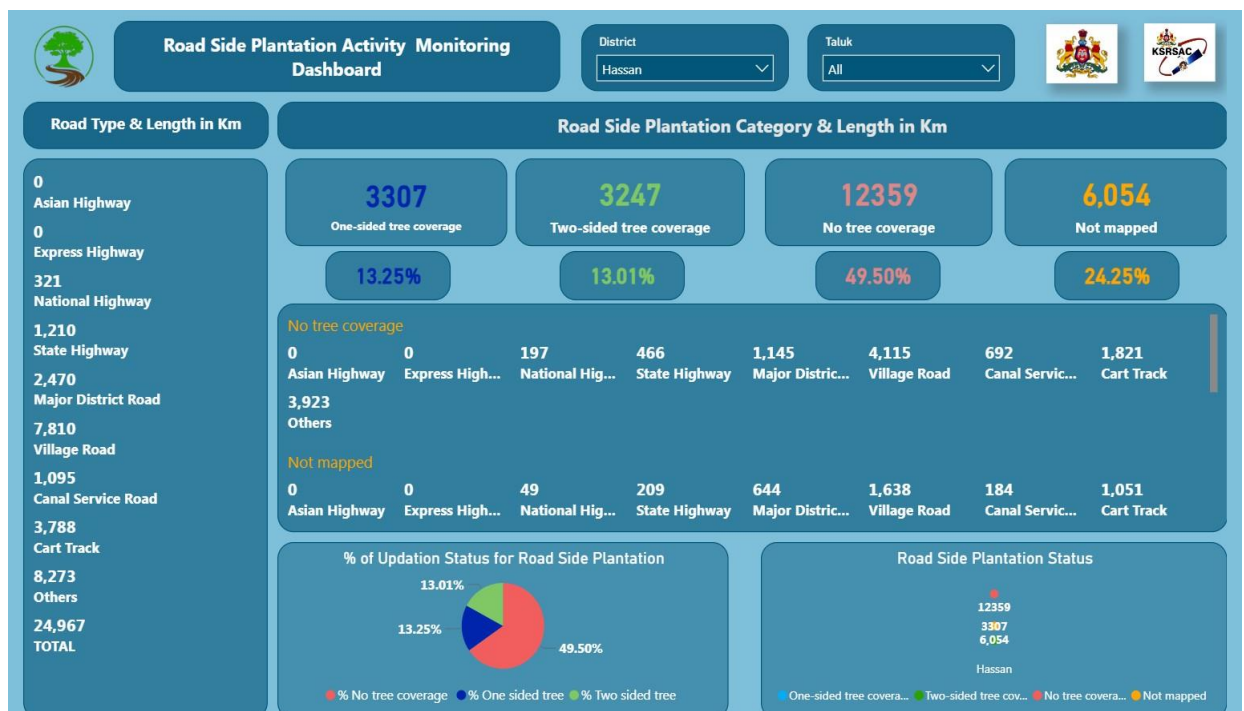
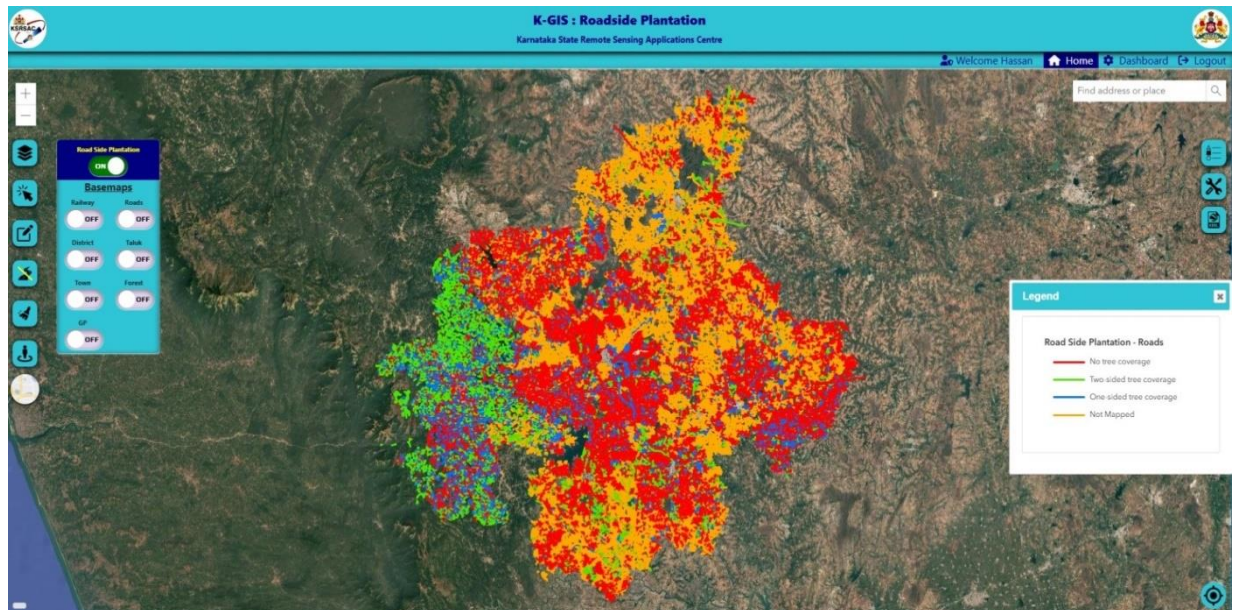






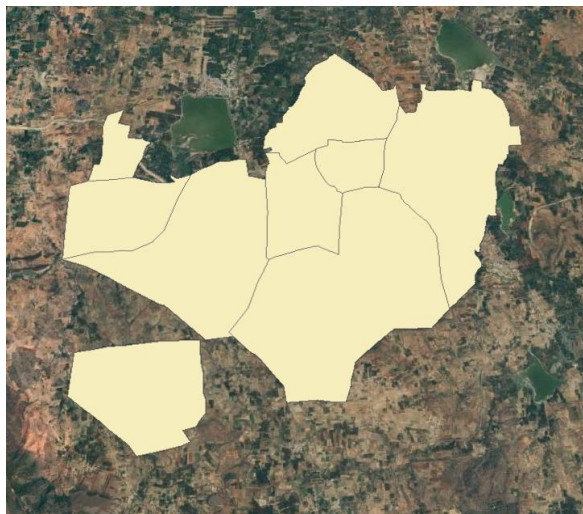
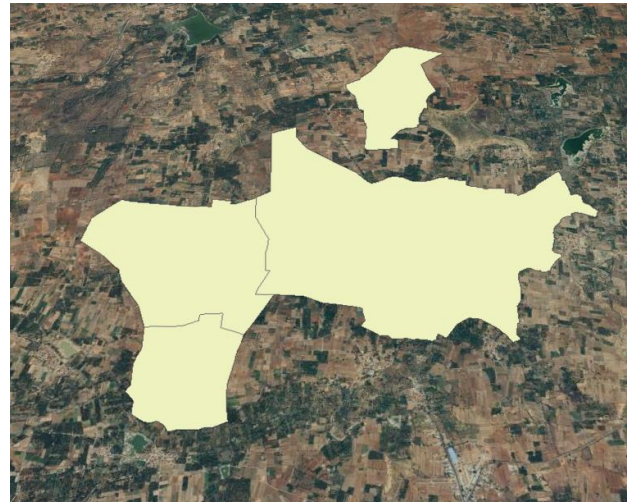
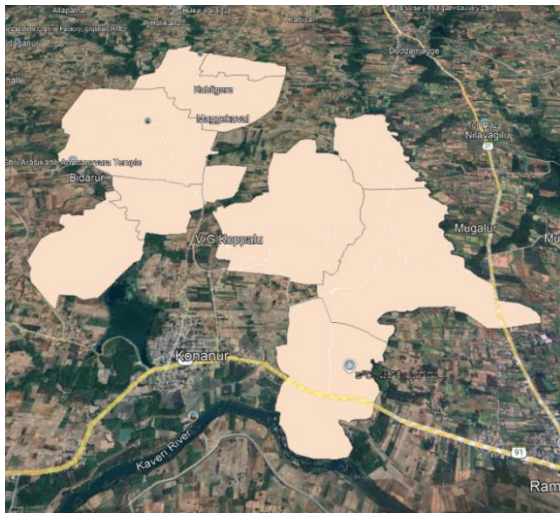
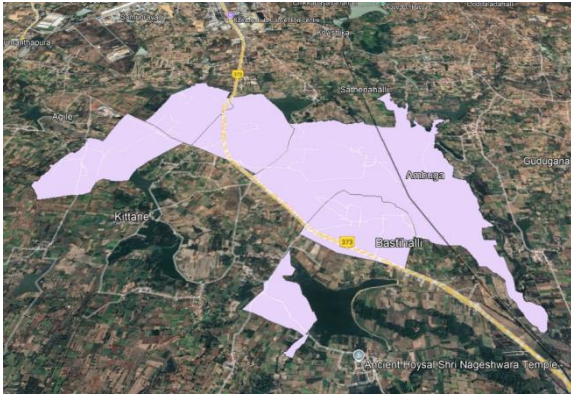
1.9 KGIS Road side Plantation work

The Roadside plantation visual interpretation work commissioned by KRSAC, is also being done and a 18,913 km out of a 24,967 km has been completed.



1.10 Department: RDPR Department

GP Boundaries



9	Ayush	Action Plan Map
10	Horticulture	Action Plan Map
11	Ayush	Ayush centres map
12	DC Office	Transportation map
13	Arsikere Taluk Panchayath	TP,ZP& TP ZP Delimitations maps
14	Hassan Taluk Panchayath	TP,ZP& TP ZP Delimitations maps
15	Archaeology	Heritage sites map
16	National Informative Centre	Transportation map
17	Hassan Taluk Office	Ward map
18	KSRSAC	Road side Plantation
19	RDPR	GP Boundaries
