

***NATURAL RESOURCES DATA
MANAGEMENT SYSTEM
(NRDMS)***

***MONTHLY ACTIVITY REPORT
August – November 2025***

***Submitted by
District NRDMS Centre
Zilla Panchayat, Vijayapura***



***Karnataka State Council of
Science and Technology
(KSCST)***

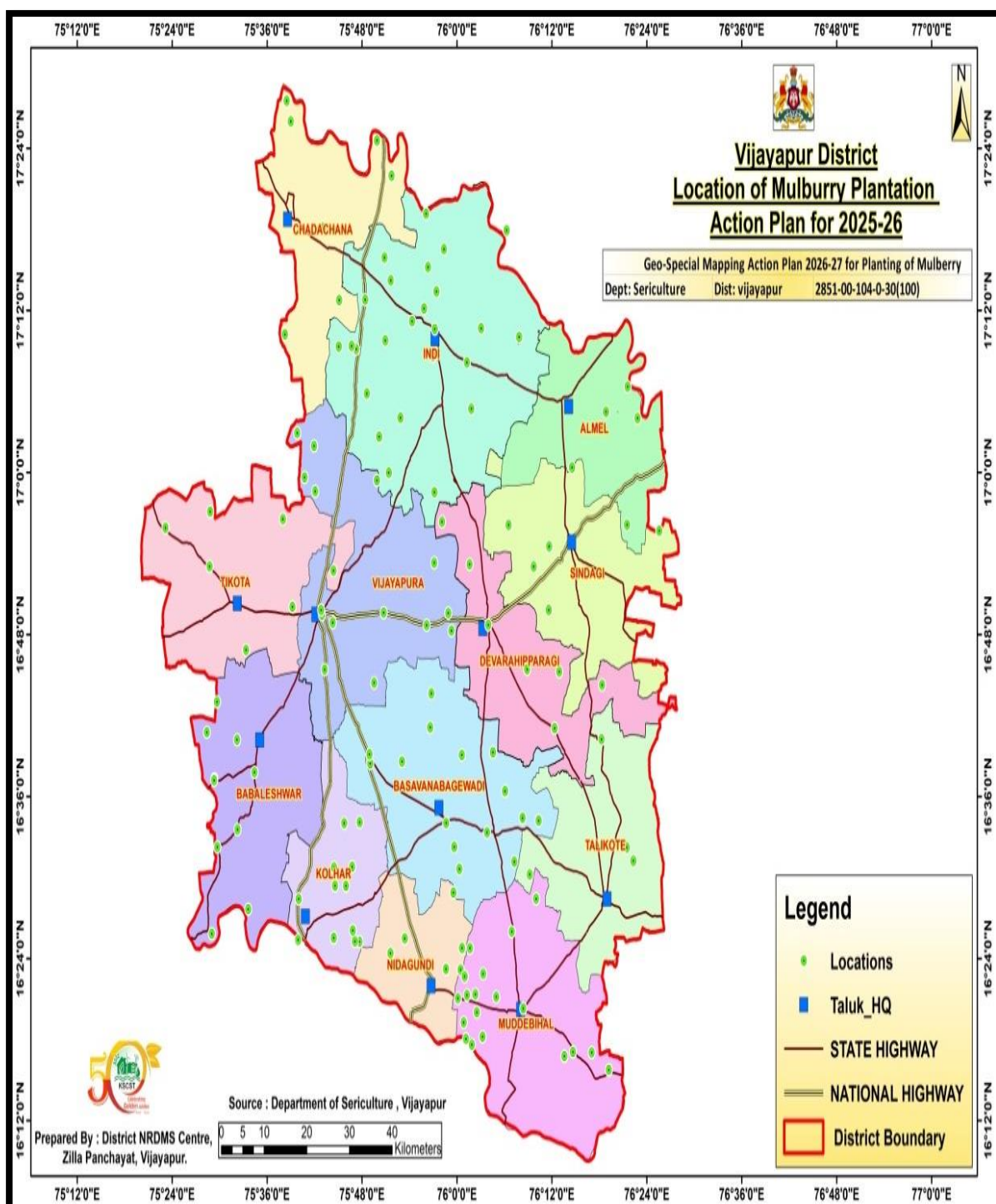
*Indian Institute of Science Campus,
Bengaluru - 560012*

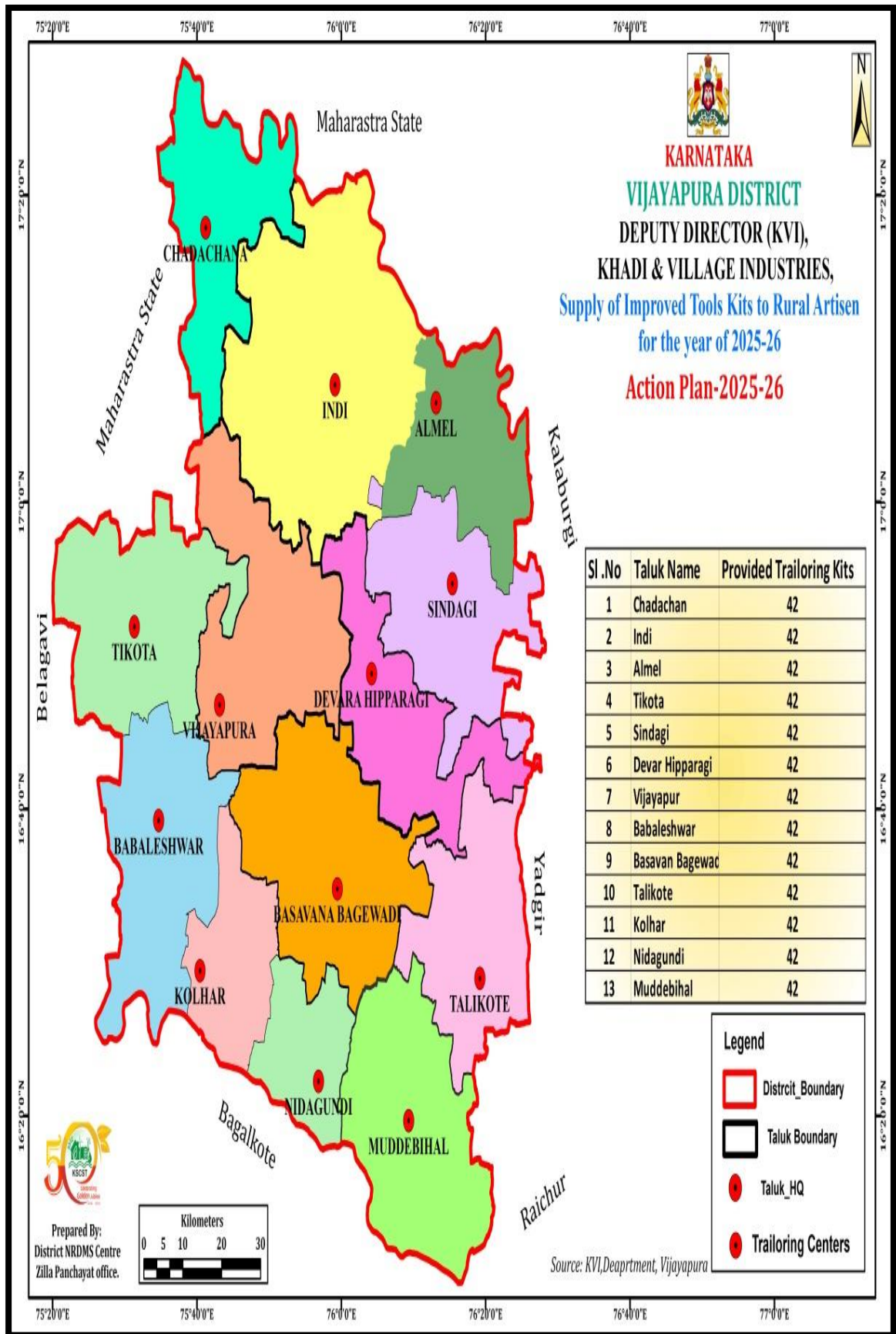
Sl. No.	Contents	Page No.
1	NRDMS Centre Activities (August - November -2025)	3-8
2	Training Programme Attended	9
3	Conclusion	

1. NRDMS Centre Activities (August - November 2025)

- **Geo-Spatial Action Plan for the year of 2025-26**

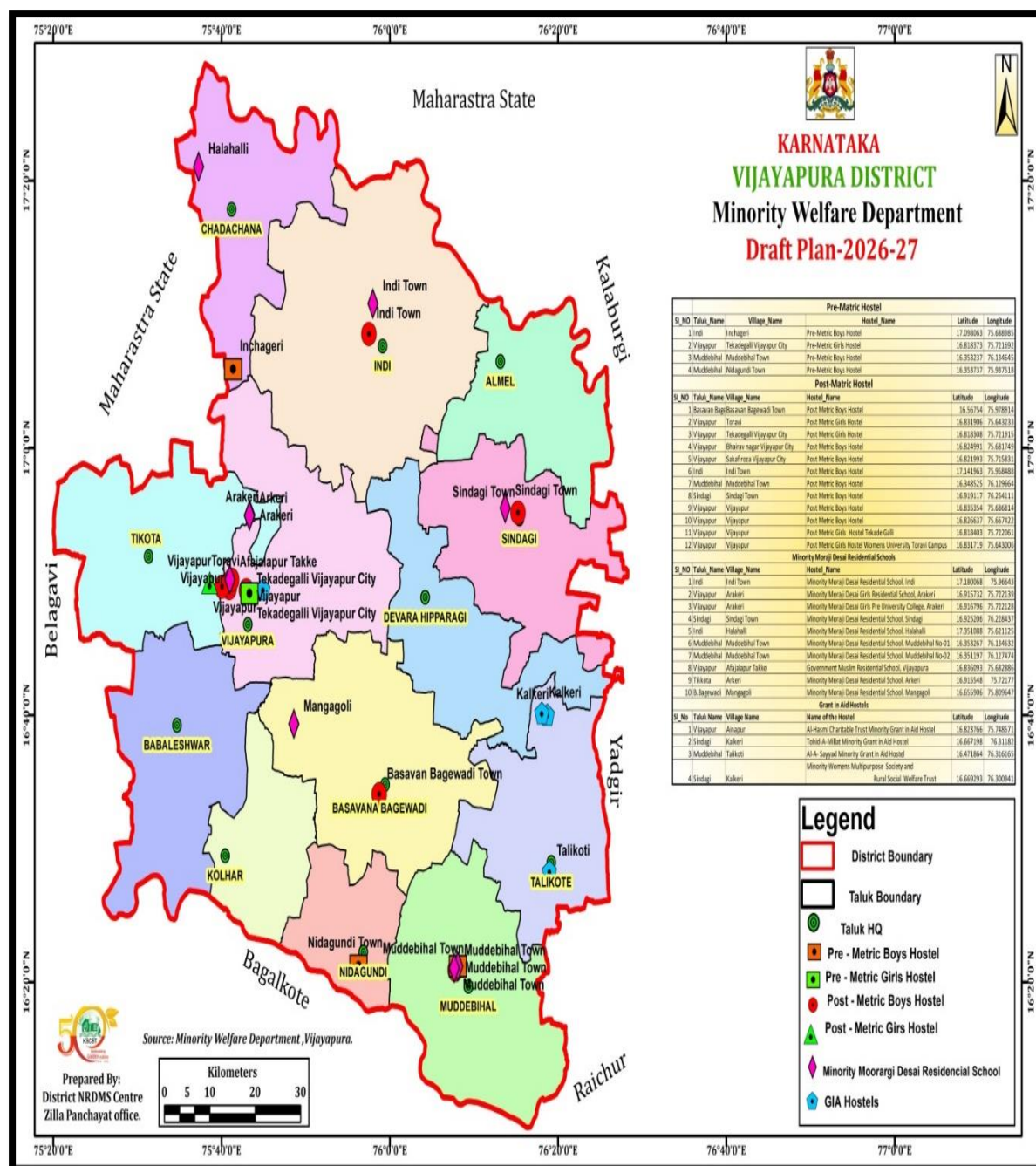
The utilization of the grant by all line departments in the previous year is shown through a Geo-Spatial map.

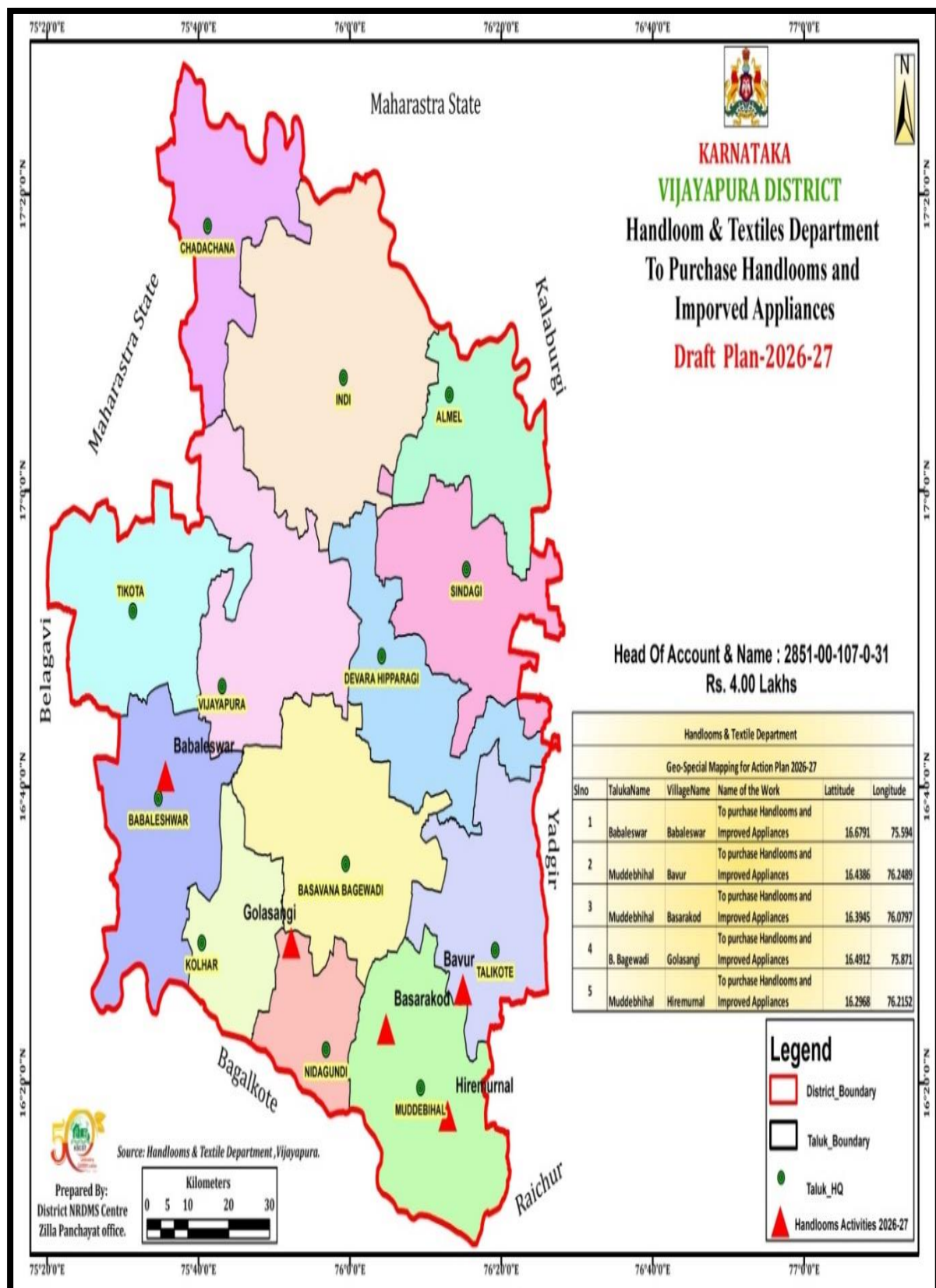




- **Geo-Spatial Draft Plan for the year of 2026-27**

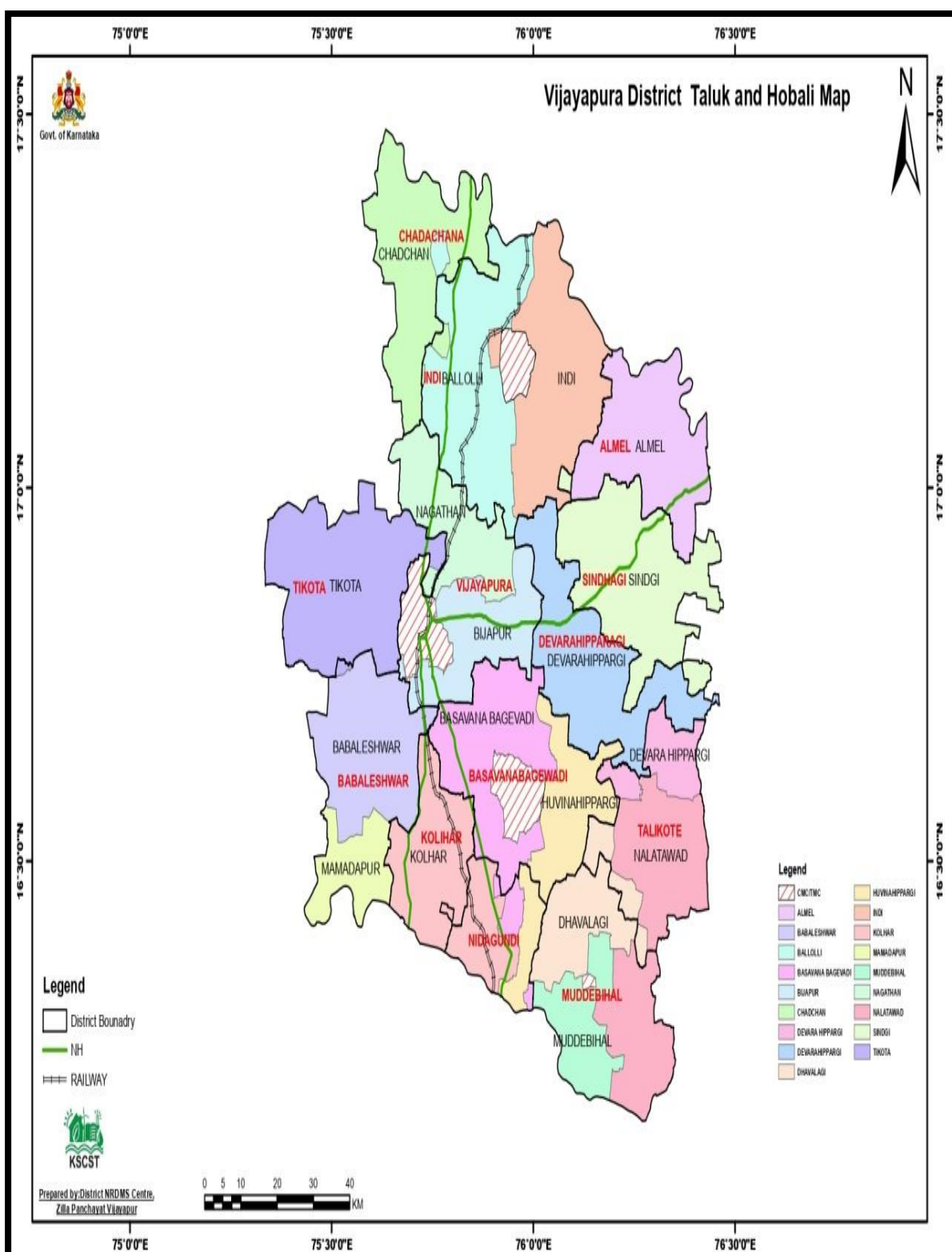
Draft Plan outlines strategic initiatives to modernize infrastructure, optimize resource management and planning for the next year of all line Department. Agriculture, Fisheries, Backward classes welfare department, Co-Operative Society, DD Office school education, Handlooms & Textile, Minority welfare department, DD (KVI) Khadi & village industries, Social welfare and Social forest has been geo-spatial mapped for all these departments.





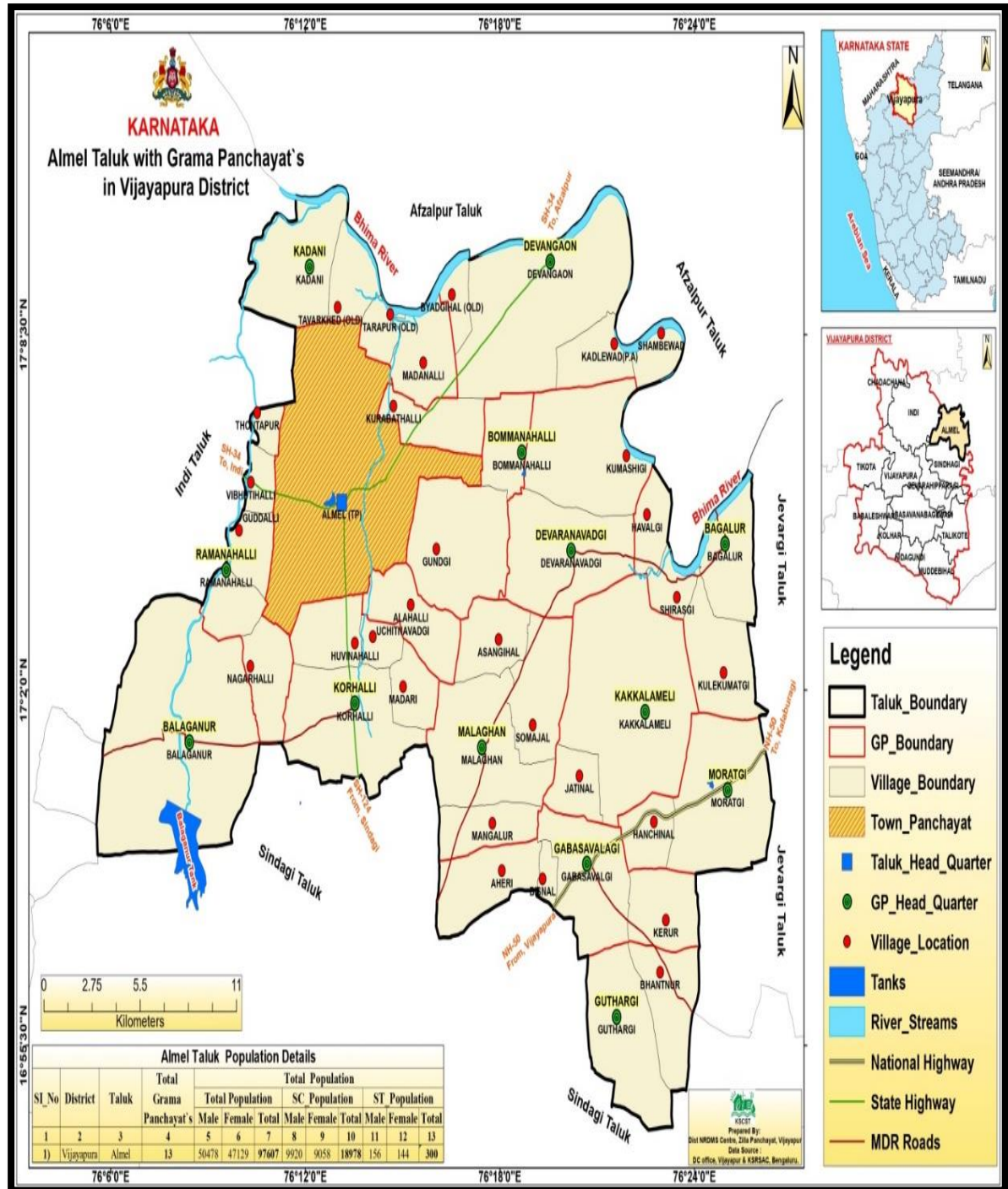
- **NRDMS Head Office Bengaluru**

On the request of NRDMS Head Office Bengaluru, Vijayapura district and Vijayapura hobali wise map has been prepared for uploading on the website.



KSRTC Department

As per request from the Traffic Superident of KSRTC Vijayapur Division the district NRDMS Center has prepared the Almel Taluk and hobali wise map and this map is used to provide transport facilities to the village of Almel taluk.



2. Training Programmes Attended

As per the order from Chief Executive Secretary of Vijayapur attended Thematic Programme District Disaster Management plan 5 days Training Programme at ATI Mysore from 13.10.2025 to 17.10.2025. In the training, we learned about Disaster, Disaster management origin, concept, scope and extent, Disaster management act 2005 ,Analysis and relevance of risk , loss, vulnerability and strengths, Relevance of National, State, District and Regional level disaster management plan, Psycho social care, Fire ,First aid and emergency response and Social justice and equality, our roles and DDMP report.



3. Conclusion:

The Natural Resource Data Management System (NRDMS) plays a crucial role in India's development by leveraging geospatial technologies to manage natural resources sustainably. During in this period District NRDMS Center Zilla Panchayat Vijayapur this center is supporting all line departments, Zilla Panchayt and preparing all necessary maps for the planning department. District NRDMS center also attended some various training programme and also supporting from Geospatial data and maps.